



County of Yolo

DEPARTMENT OF COMMUNITY SERVICES

Leslie Lindbo,
INTERIM DIRECTOR

**Planning & Public Works
Management**

292 West Beamer Street
Woodland, CA 95695-2598
(530) 666-8775
FAX (530) 666-8156
www.yolocounty.org

Environmental Health

292 West Beamer Street
Woodland, CA 95695-2598
(530) 666-8646
FAX (530) 669-1448
www.yolocounty.org

Integrated Waste

44090 CR 28H
Woodland, CA 95776
(530) 666-8852
FAX (530) 666-8853
www.yolocounty.org

EXHIBIT A Parcel History Timeline

Current Parcel Configuration





County of Yolo

DEPARTMENT OF COMMUNITY SERVICES

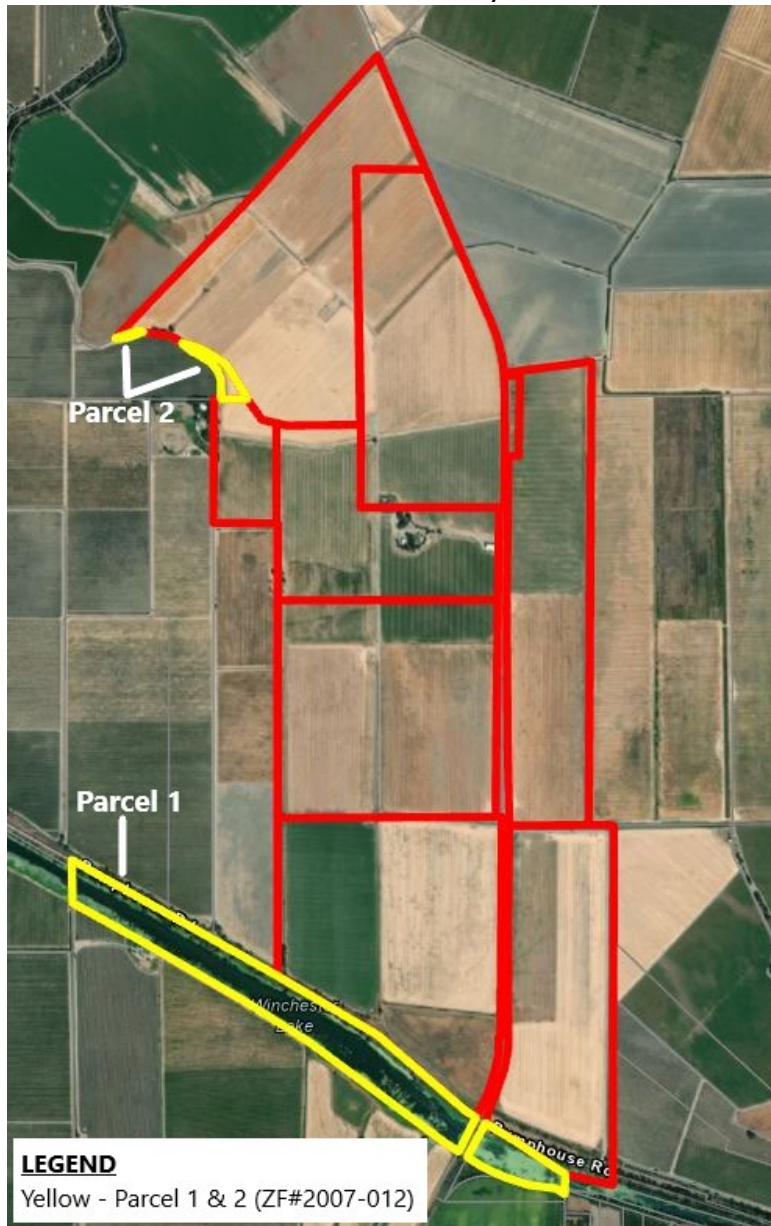
Leslie Lindbo,
INTERIM DIRECTOR

**Planning & Public Works
Management**
292 West Beamer Street
Woodland, CA 95695-2598
(530) 666-8775
FAX (530) 666-8156
www.yolocounty.org

Environmental Health
292 West Beamer Street
Woodland, CA 95695-2598
(530) 666-8646
FAX (530) 669-1448
www.yolocounty.org

Integrated Waste
44090 CR 28H
Woodland, CA 95776
(530) 666-8852
FAX (530) 666-8853
www.yolocounty.org

Conditional Certificate of Compliance Zone File No. 2007-012





County of Yolo

DEPARTMENT OF COMMUNITY SERVICES

Leslie Lindbo,
INTERIM DIRECTOR

**Planning & Public Works
Management**

292 West Beamer Street
Woodland, CA 95695-2598
(530) 666-8775
FAX (530) 666-8156
www.yolocounty.org

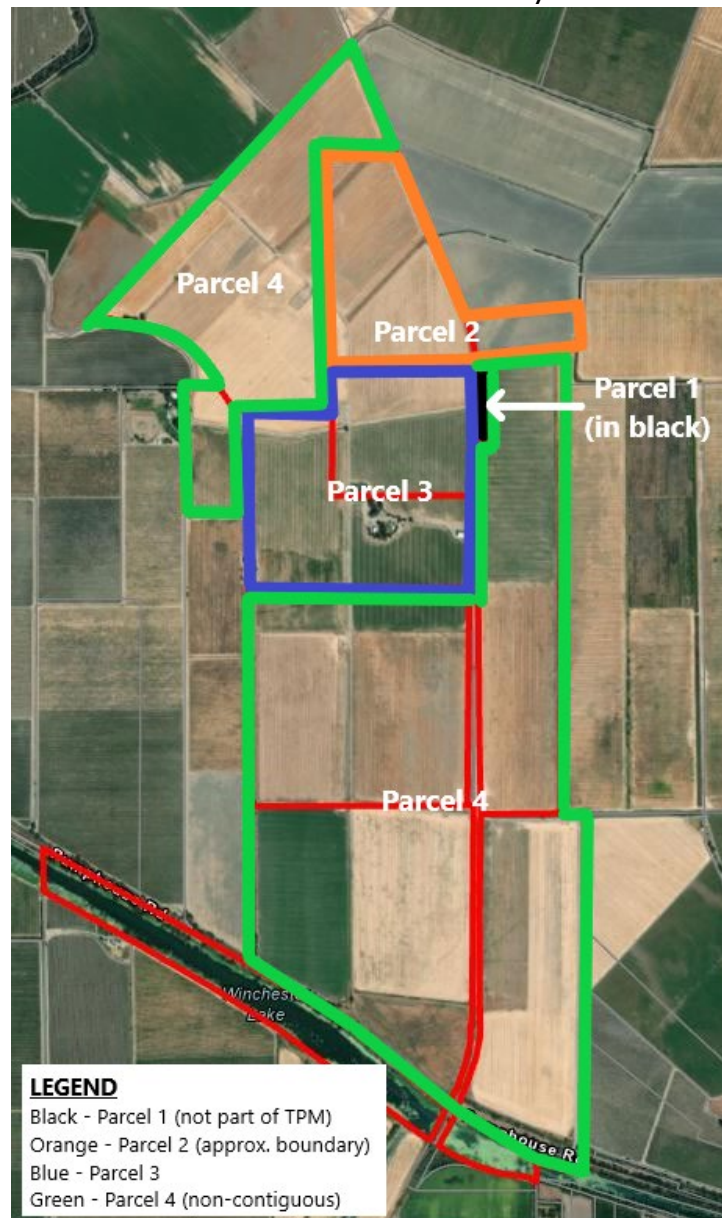
Environmental Health

292 West Beamer Street
Woodland, CA 95695-2598
(530) 666-8646
FAX (530) 669-1448
www.yolocounty.org

Integrated Waste

44090 CR 28H
Woodland, CA 95776
(530) 666-8852
FAX (530) 666-8853
www.yolocounty.org

Certificate of Compliance Zone File No. 2008-017





County of Yolo

DEPARTMENT OF COMMUNITY SERVICES

Leslie Lindbo,
INTERIM DIRECTOR

**Planning & Public Works
Management**

292 West Beamer Street
Woodland, CA 95695-2598
(530) 666-8775
FAX (530) 666-8156
www.yolocounty.org

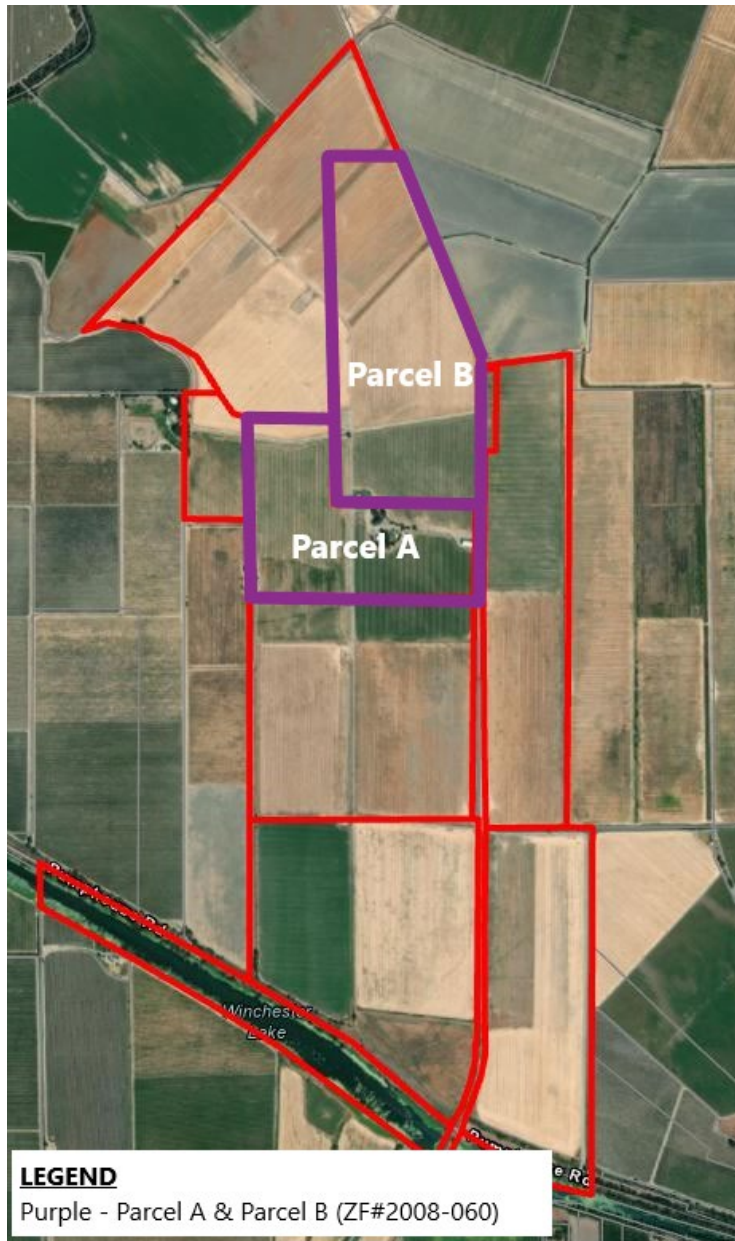
Environmental Health

292 West Beamer Street
Woodland, CA 95695-2598
(530) 666-8646
FAX (530) 669-1448
www.yolocounty.org

Integrated Waste

44090 CR 28H
Woodland, CA 95776
(530) 666-8852
FAX (530) 666-8853
www.yolocounty.org

Lot Line Adjustment Zone File No. 2008-060





County of Yolo

DEPARTMENT OF COMMUNITY SERVICES

Leslie Lindbo,
INTERIM DIRECTOR

**Planning & Public Works
Management**

292 West Beamer Street
Woodland, CA 95695-2598
(530) 666-8775
FAX (530) 666-8156
www.yolocounty.org

Environmental Health

292 West Beamer Street
Woodland, CA 95695-2598
(530) 666-8646
FAX (530) 669-1448
www.yolocounty.org

Integrated Waste

44090 CR 28H
Woodland, CA 95776
(530) 666-8852
FAX (530) 666-8853
www.yolocounty.org

Proposed Tentative Parcel Map Zone File No. 2022-0046

