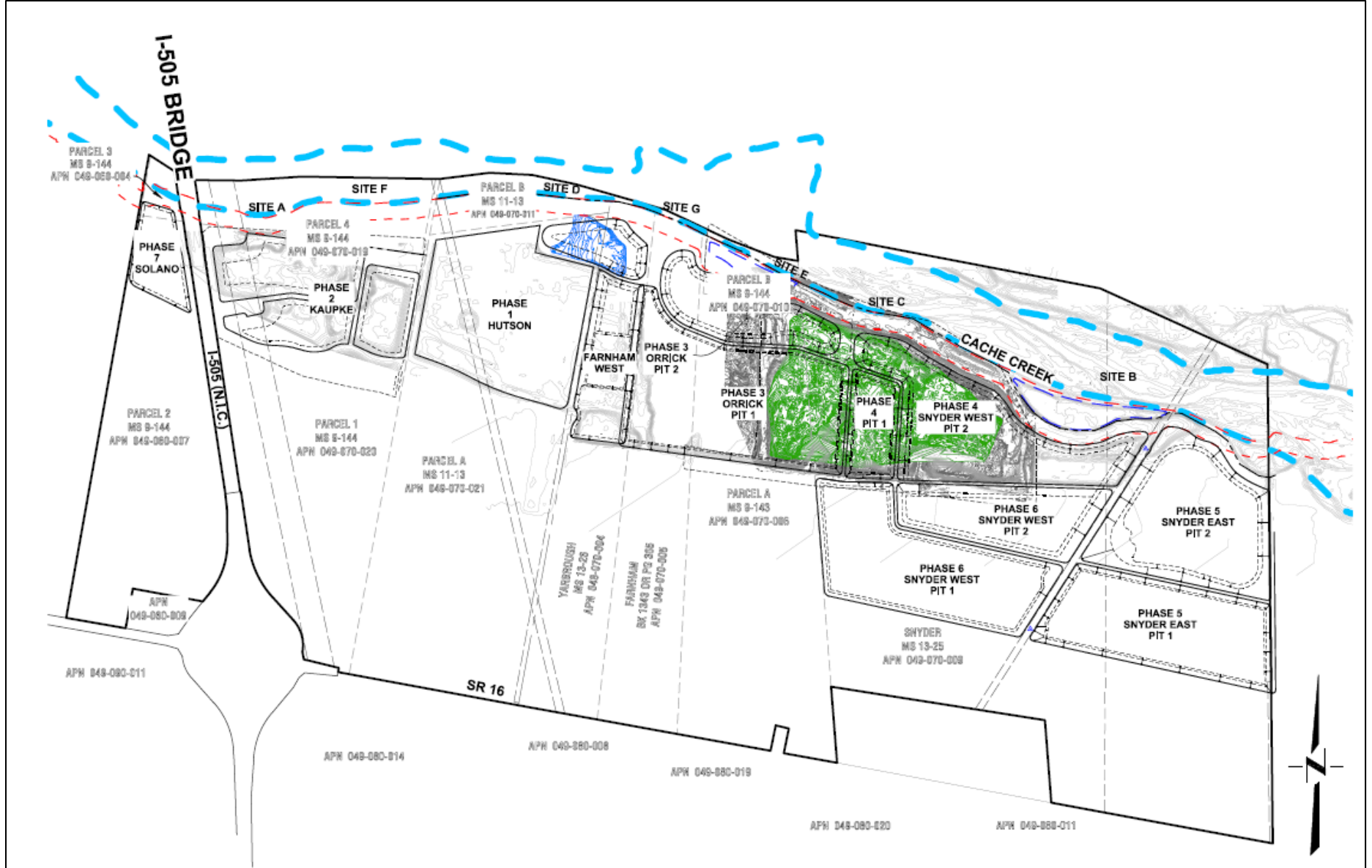


Site Boundaries and Inspection Photos

CEMEX



CA MINE ID# 91-57-0008 – CEMEX

Inspection Date – November 29, 2022

Soil Stockpile with fencing and appropriate signage



Scrapers removing overburden in preparation for mining



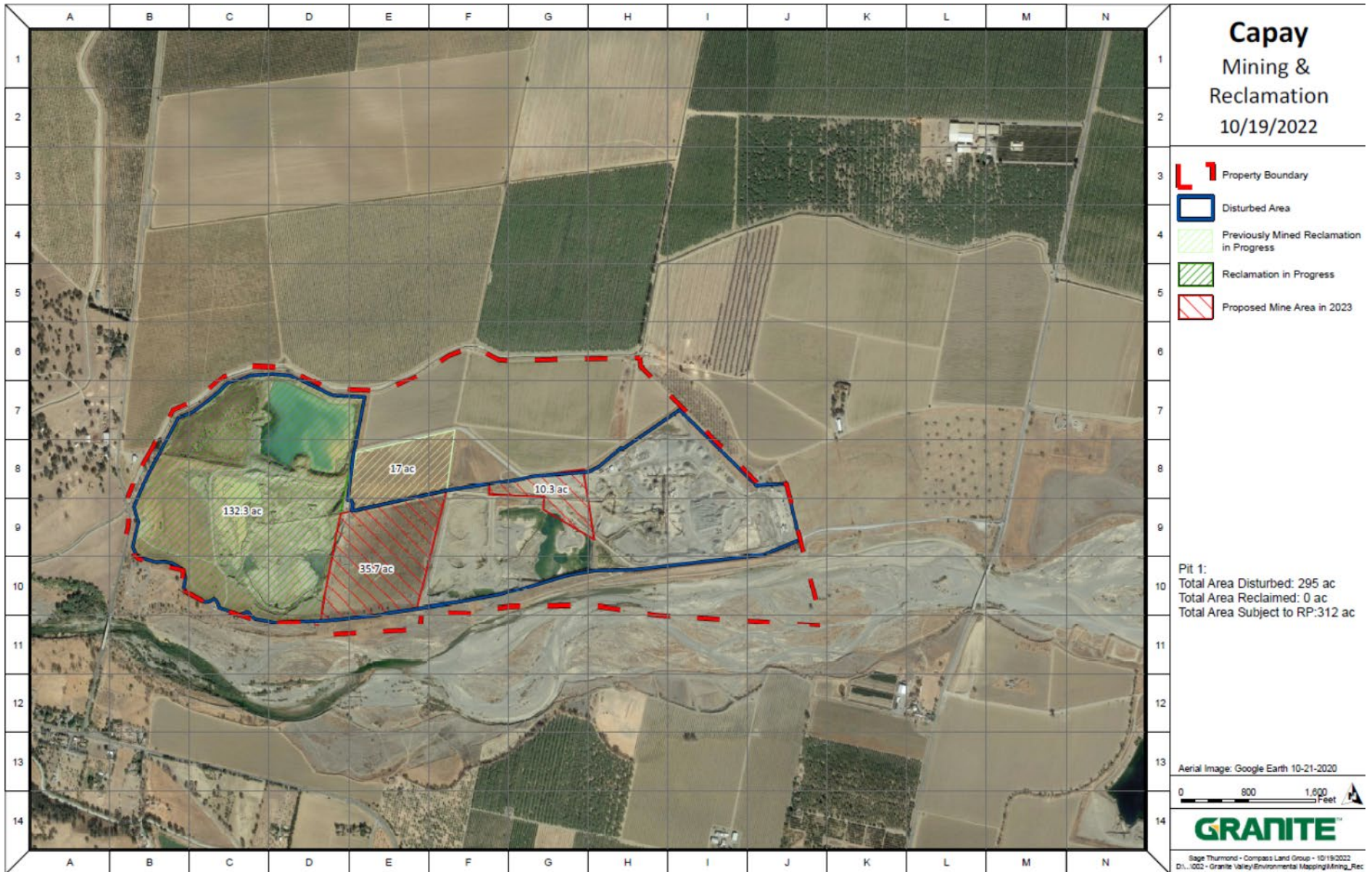
Reclamation to agriculture – field leveling and prep – looking south



Floating dredge operation



Granite Capay



CA MINE ID# 91-57-0014 – Granite Capay

Inspection Date – November 29, 2022

Wash fines – piped into Phase 1A pit for future reclamation to agriculture



Wash fines pond – Phase 1A – looking northwest



Plant site, stockpiles, and active loading of gravel trucks – looking west



Active mining – material placed on conveyor to plant site



CA MINE ID# 91-57-0015 – Syar Industries LLC – Madison Sand and Gravel

Inspection Date – November 29, 2022

Idle plant equipment – looking west – shows well-maintained site



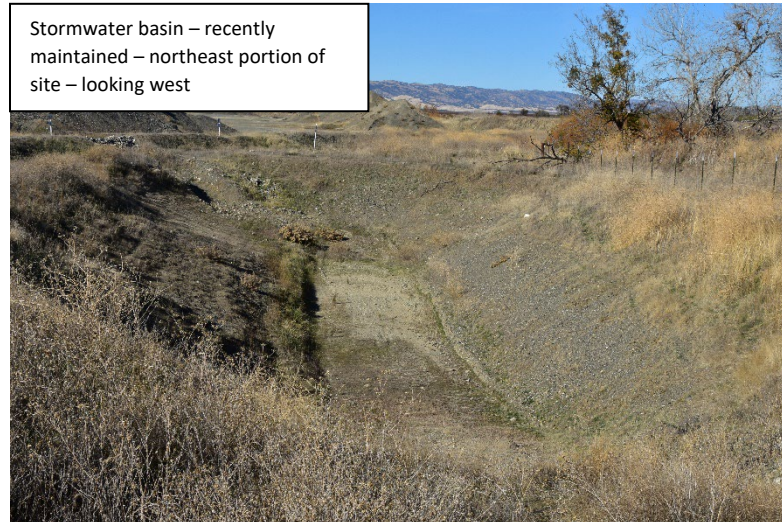
Conveyor from Mine areas B1 & B2 – south edge of mine area looking east – ag fields adjacent to the south



Landscape berm along western edge of site – weed abatement plan implemented on berm – looking north




Stormwater basin – recently maintained – northeast portion of site – looking west




Teichert Esparto


**SMARA Annual
Reporting Year 2022**
**Teichert Aggregates
Esparto: Reiff/Mast Property**
Yolo County, California


California Mine ID: 91-57-0011


 Total Disturbed Area
(Approximate)
± 232 Acres


 2021 Disturbed Area
0 Acres

Reclamation:


 Reclamation In Progress
(Approximate)

 Reclamation Construction &
Revegetation Completed,
Monitoring in Progress
(Approximate)

 Reclamation Completed:
Signed Off
0 Acres

 Property Boundary
(Approximate)



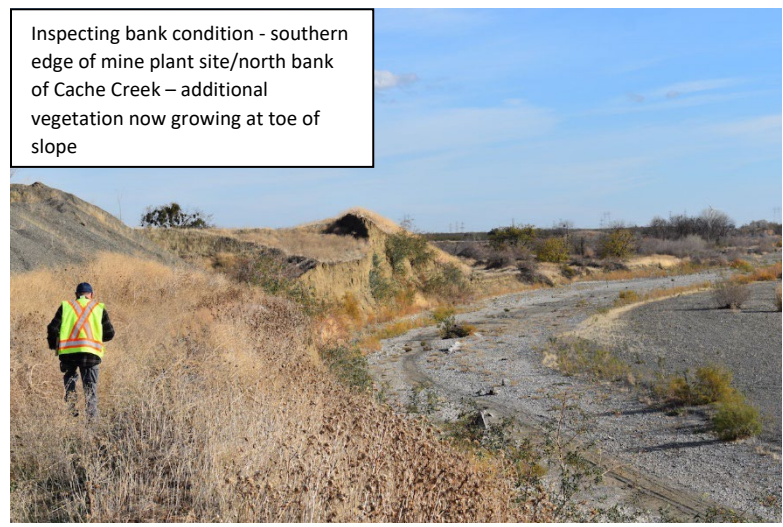
0 250 500 1,000 Feet


*** Boundary and area features were
hand drawn. No liability is assumed
for the accuracy of the data shown.*

C. Cornejo Rev. by T. Yee 6/10/2022 ESP_SMARA.aprx

CA MINE ID# 91-57-0011 – Teichert Esparto

Inspection Date – November 28, 2022



Teichert Schwarzgruber



CA MINE ID# 91-57-0006 – Teichert Schwarzgruber

Inspection Date – November 28, 2022

Eastern pit slope preparation for reclamation – looking north



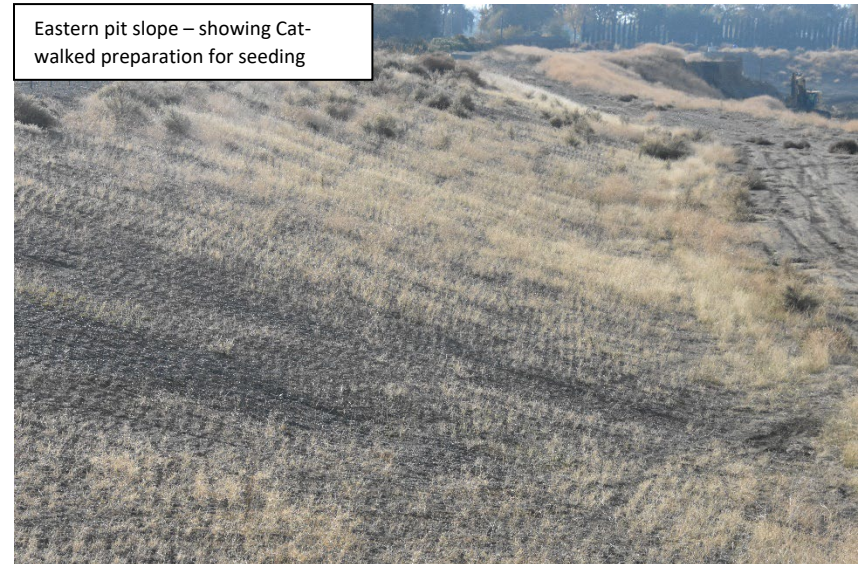
Southern pit slope preparation for reclamation – looking west



North pit slope along levee – looking west



Eastern pit slope – showing Cat-walked preparation for seeding




Teichert Woodland Plant

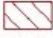


SMARA Annual Reporting Year 2021


Teichert Aggregates Woodland: Plant Site Yolo County, California


California Mine ID: 91-57-0002

 Total Disturbed Area (Approximate)
± 130 Acres

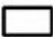
 2021 Disturbed Area
0 Acres

Reclamation:

 Reclamation In Progress (Approximate)

 Reclamation Construction & Revegetation Completed, Monitoring In Progress (Approximate)

 Reclamation Completed: Signed Off
0 Acres

 Property Boundary (Approximate)



0 200 400 800 Feet

** Boundary and area features were hand drawn. No liability is assumed for the accuracy of the data shown.

CA MINE ID# 91-57-0002 – Teichert Woodland Plant

Inspection Date – November 28, 2022

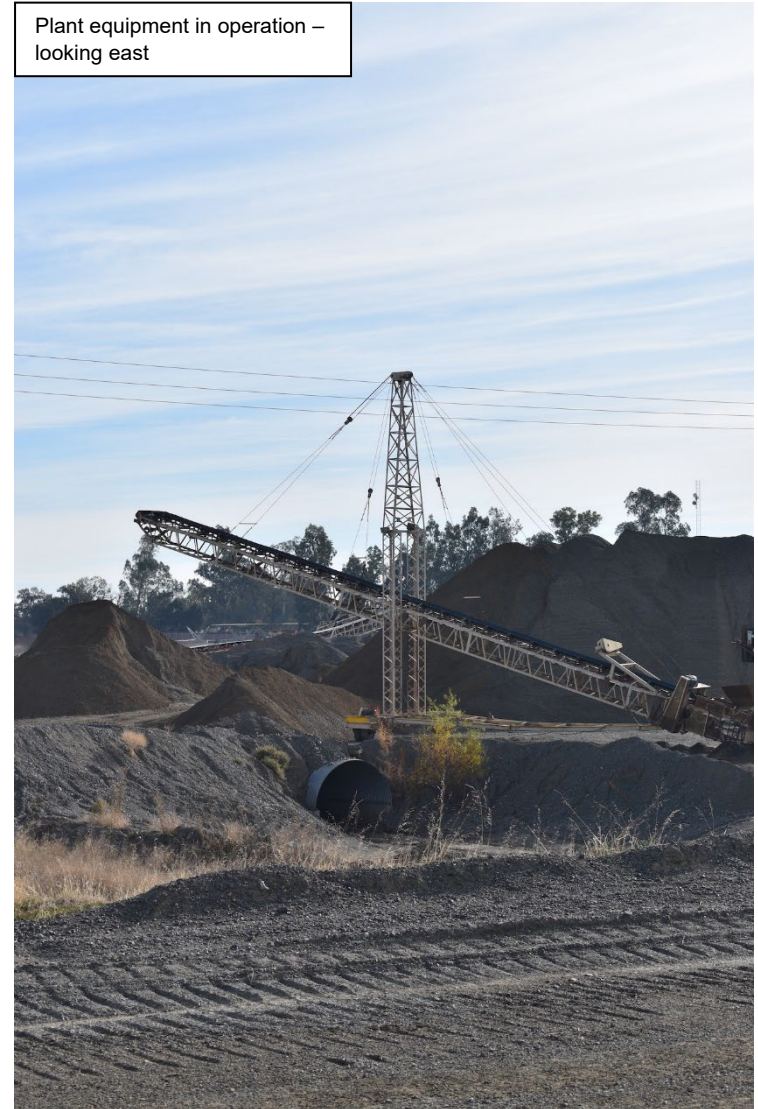
Plant Site – looking southeast



Conveyor from Shifler mine excavation – western side of plant site – looking south



Plant equipment in operation – looking east



CA MINE ID# 91-57-0024 – Teichert Shifler

Inspection Date – November 28, 2022

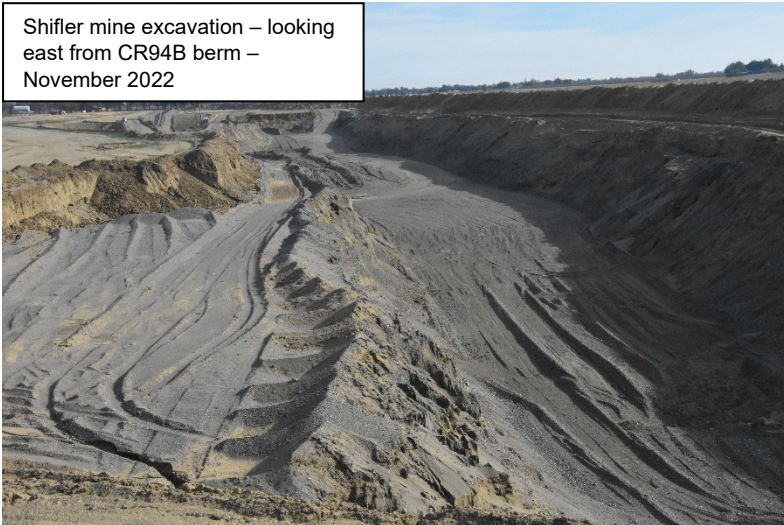
Shifler berm – CR94B – looking north – November 2022



Shifler berm – CR94B – looking north – June 2023



Shifler mine excavation – looking east from CR94B berm – November 2022



Conveyor to plant site from mine excavation – looking east

