

# Introduction to Genasys: A New Evacuation Tool

Yolo County



# Evacuation: Old Way

Ad-hoc: Guessing fire or hazmat path, drawing areas on maps, trying to convert to message.

Know Your Zone – on dimensional.

Unknown real-time traffic implications.

Multi-agency decision-making and communication issues

Public Confusion: spotty and unclear evac instructions: *"Evacuation in affect for Signal Hill, part of Zone 75, area due to fast-moving fire. South of Simpson Ridge, West of Hwy 97, North of Shady Creek, and East of Silver Oak Lane" is in effect*



# Pre-planning local knowledge

## Overlay

- Traffic control points
- Arrival points
- Critical infrastructure

The screenshot displays the EVAC software interface. The main map shows several evacuation zones labeled SSF-E001 through SSF-E009. Zone SSF-E002 is highlighted in grey. Various icons are overlaid on the map, including red 'A' symbols for arrival points and blue icons for traffic control points. The interface includes a sidebar on the left with navigation tools and a right-hand panel with summary and details for the selected zone.

**1 Zone selected**

Hide zones list

US-CA-354-SSF-E002  
Normal

**Summary**

POPULATION	1,447	2,804
VEHICLES	1,183	2,366
AREA	275 acres	
STRUCTURES	920	

Download PDF Booklets

**General info** | Evacuation details

**Jurisdictional Responsibilities**

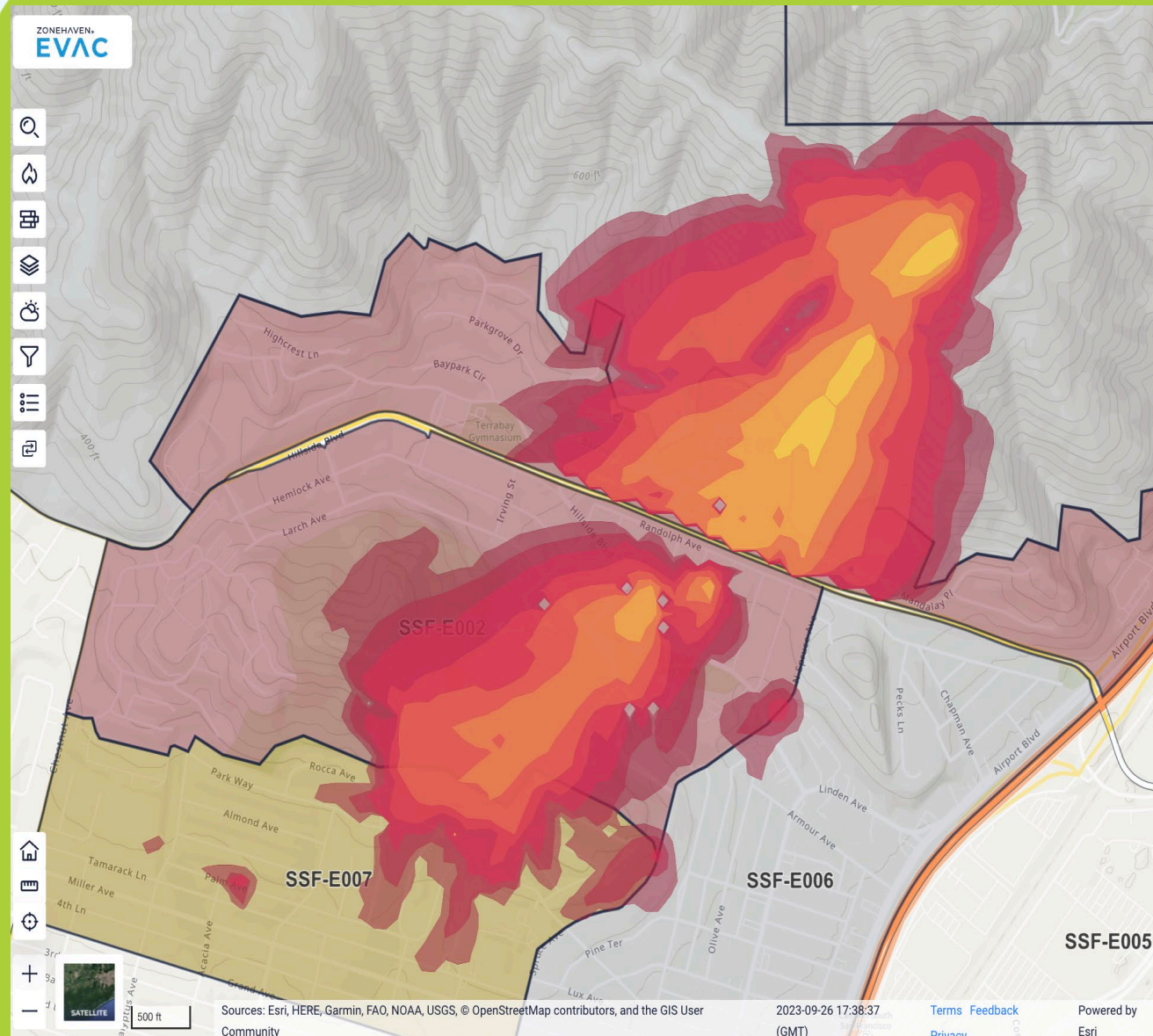
FIRE	LAW
SOUTH SAN FRANCISCO FIRE D...	SOUTH SAN FRANCISCO POLIC...

**Zone Approval Status**

Published

2023-05-24 16:59:06 (GMT) | Terms | Feedback | Privacy

# Data-driven decision-making with actionable information



## Kitsap Fire SIm

South San Francisco, San Mateo County  
2023-08-24 22:01:20 (GMT)  
ELMFIRE

Show simulation conditions

### Impacted zones

#### Summary

POPULATION	16.7k
VEHICLES	7,775
AREA	417.93 acres
STRUCTURES	5,183
ZONES	7

#### View by hour

All TOTAL FIRE AREA 417.93 acres

1 5,294 FIRE AREA 6.66 acres

US-CA-XSM-SMC-E002 US-CA-XSM-SSF-E001  
US-CA-XSM-SSF-E007

2 2,125 FIRE AREA 37.91 acres

US-CA-XSM-SSF-E002

Back

# Bring the public in to our common operating picture

Visualize and share our plan going into action

Public Portal

Real-time

Publicly available, no subscription or log-in required

Waze integration

The screenshot displays the 'genasys Protect' mobile application interface. On the left is a navigation sidebar with options: Search, Fires, About, and Download App. The main content area is titled 'LEAVE IMMEDIATELY' with a warning icon and text: 'Immediate threat to life. This is a lawful order to leave now. The area is lawfully closed to public access.' Below this is a 'REASON' section: 'Demo Only - Fire in san bruno mountains'. A 'CRITICAL NOTIFICATIONS' section follows, with a bell icon and text: 'Never miss an alert, and receive critical notifications on the go with the genasys Protect mobile app', accompanied by a 'Download app now' button. At the bottom, an 'EVACUATION POINTS' section lists 'Jack Drago Park' with the address 'East Grand Ave at Gateway Boulevard, South San Francisco, CA 94080' and a 'View on Map' link. On the right, a map shows various evacuation zones labeled with codes like SMC-E002, SSF-E001 through SSF-E010, and BRI-E001 through BRI-E004. A pop-up window for zone SSF-E001 provides details: 'Zone SSF-E001', 'Terra Bay Neighborhood', 'Status EVACUATION ORDER', and 'State - CA'.

# Mobile App

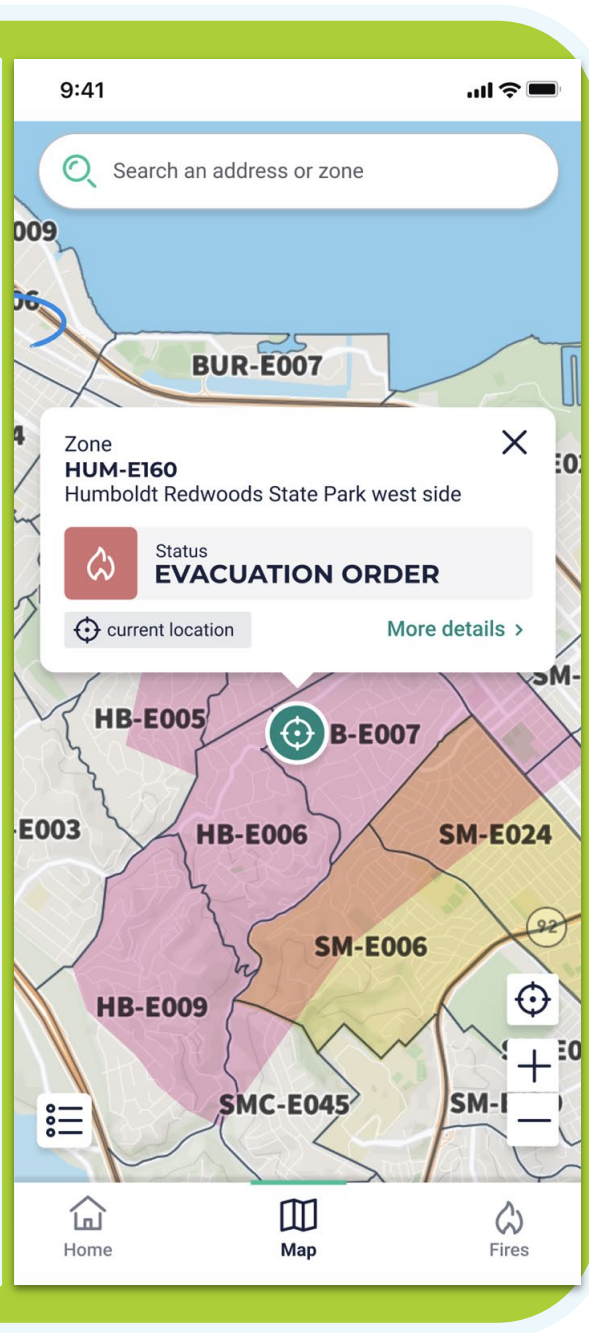
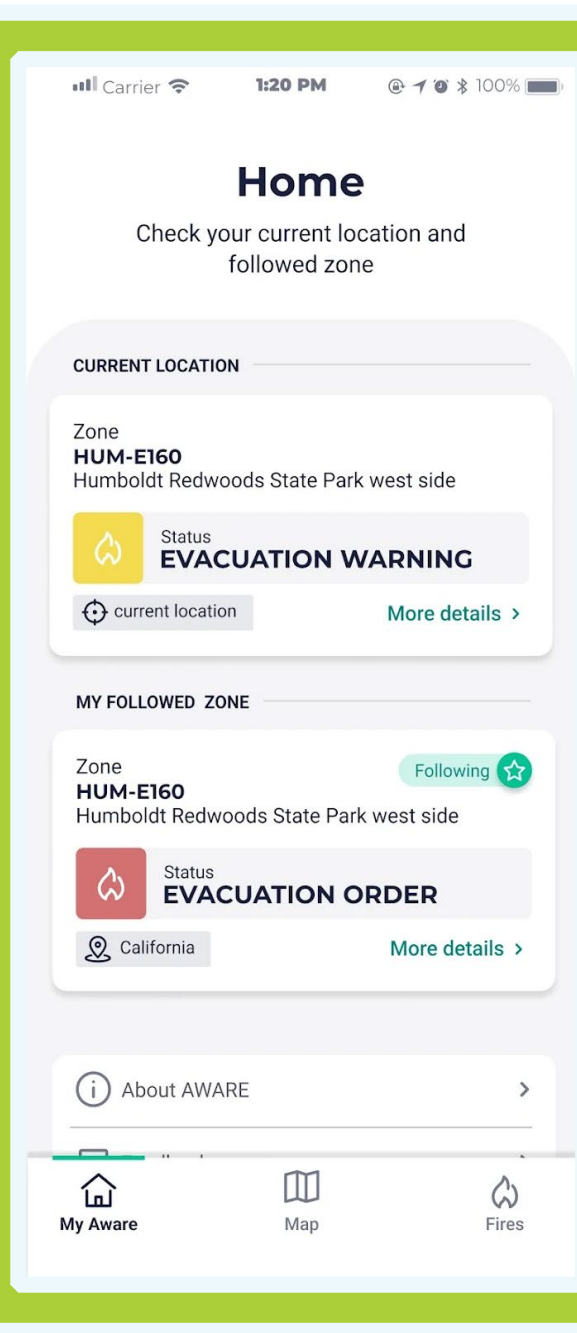
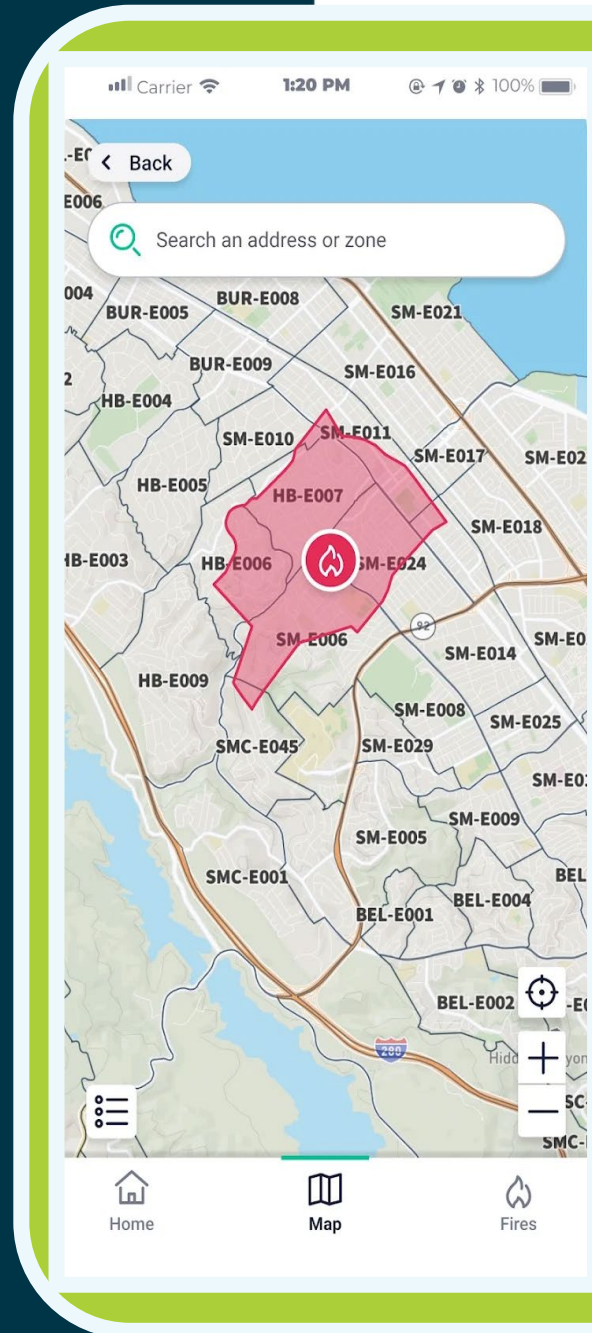
Keeping the community informed

Access real-time updates on incidents

Get visibility into local information including road closures and shelter locations

Follow zones of interest – Family, Friends, etc.

Receive location-based zone status notifications



# Genasys EVAC Reduces Community Notification Times by over 90%

Ensuring critical information is accurately conveyed is challenging and the risk of error due to confusion, slows decision-making and delays community notification.

Zones streamline the decision-making process, improve communications, increase accuracy and reduce community notification time to only a few minutes!



# Genasys

## California Population

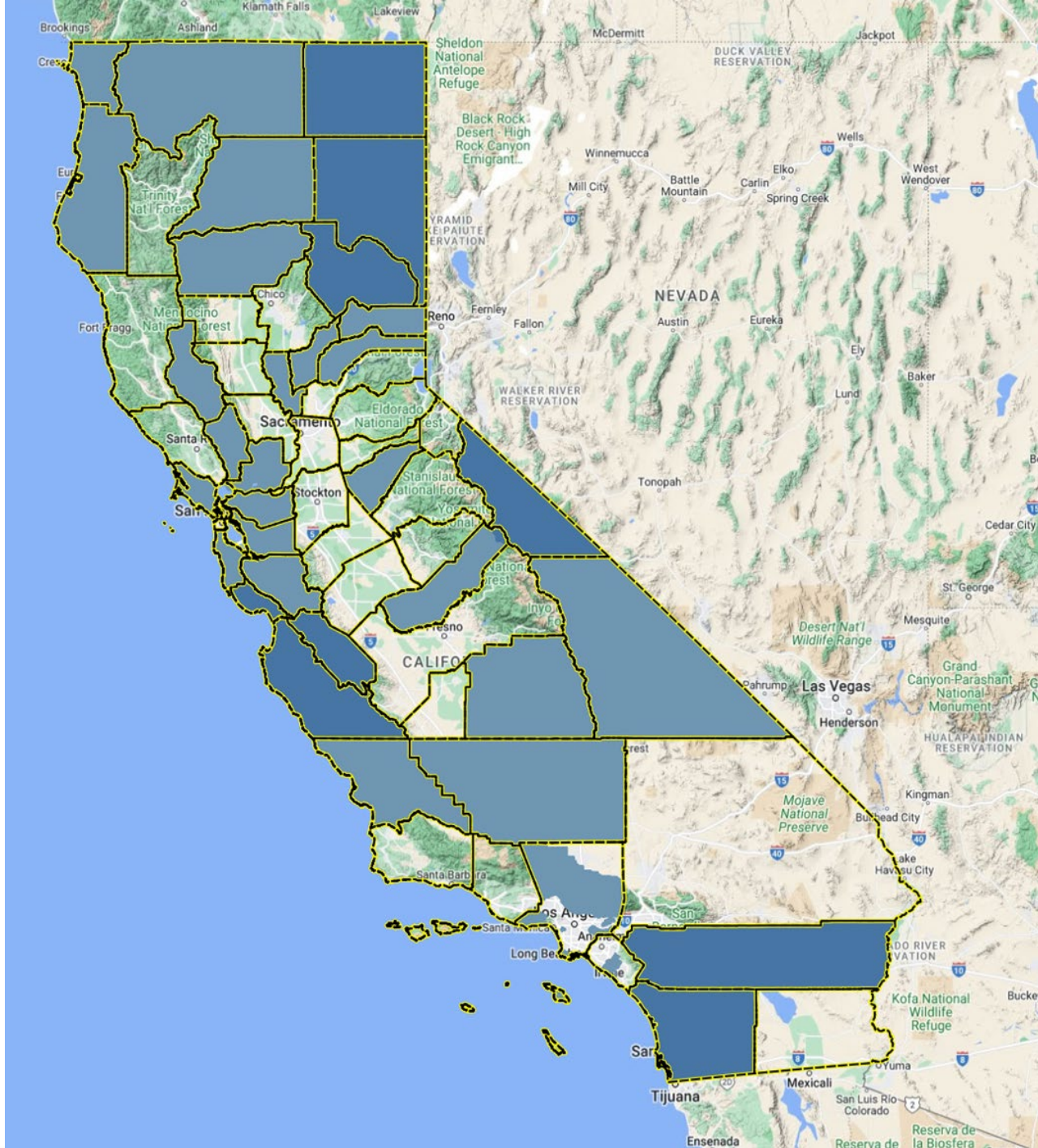
- Total: 39.5M
- Genasys: 18.5 M

## Neighboring Customers:

- Sutter
- Napa
- Solano
- Lake

## California Counties

- Total: 58
- Genasys Protect EVAC: 38
- Genasys Suite (EVAC + ALERT): 11



# The New Evacuation Management Tool

## Instant Communication

*Quickly reach the right people with the  
The right information at the right time.*

## Rapid Messaging

Reduce notification time by 90% and increase situational awareness.

## Mass Community Notification

Share consistent evacuation and repopulation information and messaging.

## Data-Driven Decision Tools

Reduce complexity for faster, more confident, and more accurate decisions.

