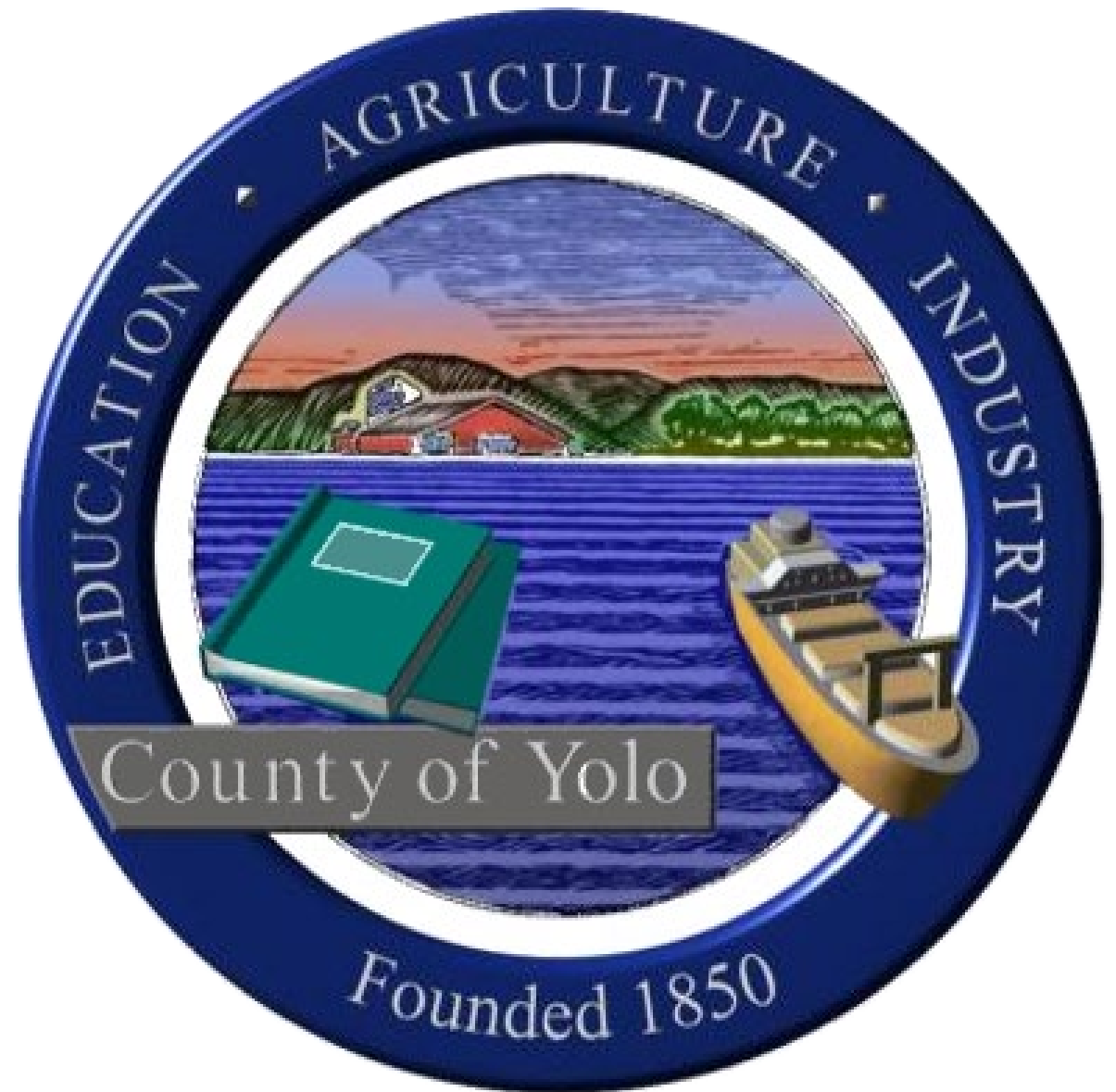


Animal Services Facilities and Space Planning Update

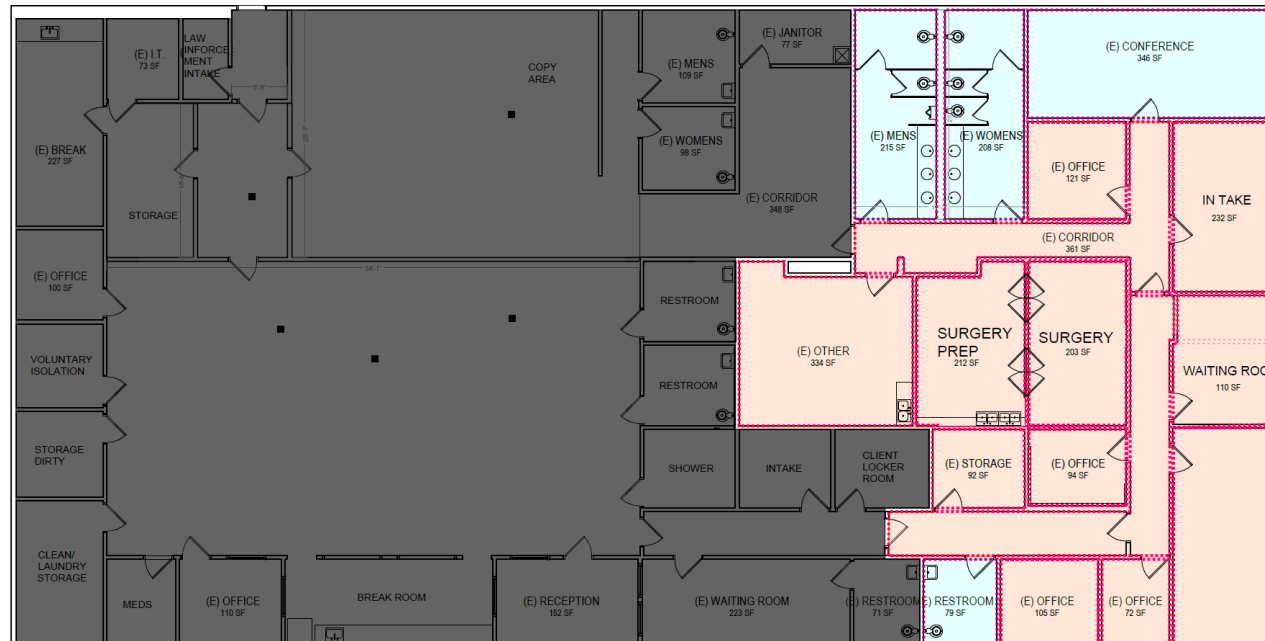
February 27, 2024



Address Current Needs

Phase 1: Addressing deferred maintenance: substantially completed / work is underway

Phase 2A: Seek Board approval to create a new spay/neuter facility in unused space at 2780 E. Gibson Road, Woodland (adjacent to future CrisisNow space)



- Adjacent to current shelter
- 2880 Square Feet available
- Easily converted to veterinary clinic
- Estimated costs are up to \$650,000

Near Term Space and Facility Planning

Phase 2B: Seek partnership(s) to provide no-cost or low-cost spay/neuter and expanded medical facilities for trap-neuter-release (TNR) programs, etc. in a future modular building

- Utilize vacant land next to future CrisisNow building to build a modular building (Cost estimate is \$1.5 million)
- Seek partnership with UC Davis School of Veterinary Medicine or other similar veterinary medicine educational partnership



Long Term

Phase 3: Plan long-term solution for a future new animal shelter building.

- Seek grants and other funding opportunities for a long-term solution

Recommended Action

- Receive update
- **Authorize the use of funds up to \$650,000 and direct staff to proceed with building improvements at 2780 E Gibson Road, Woodland to be used for veterinarian services and related shelter operations**
- Provide feedback and direction on:
 - **Phase 2B: Seek partnership(s) to provide no-cost or low-cost veterinary services in a future modular building to be deployed on the same property.** Potential partnership(s) shall include, but not be limited to, an affiliation agreement (or comparable agreement) with the University of California Davis School of Veterinary Medicine (UCDSVM) for a Residency Training Program or other practical veterinary medicine education program that meets the needs of the community
 - **Phase 3: Plan long-term solution for a future new animal shelter building**