

Yolo County General Plan Annual Progress Report



March 26, 2024

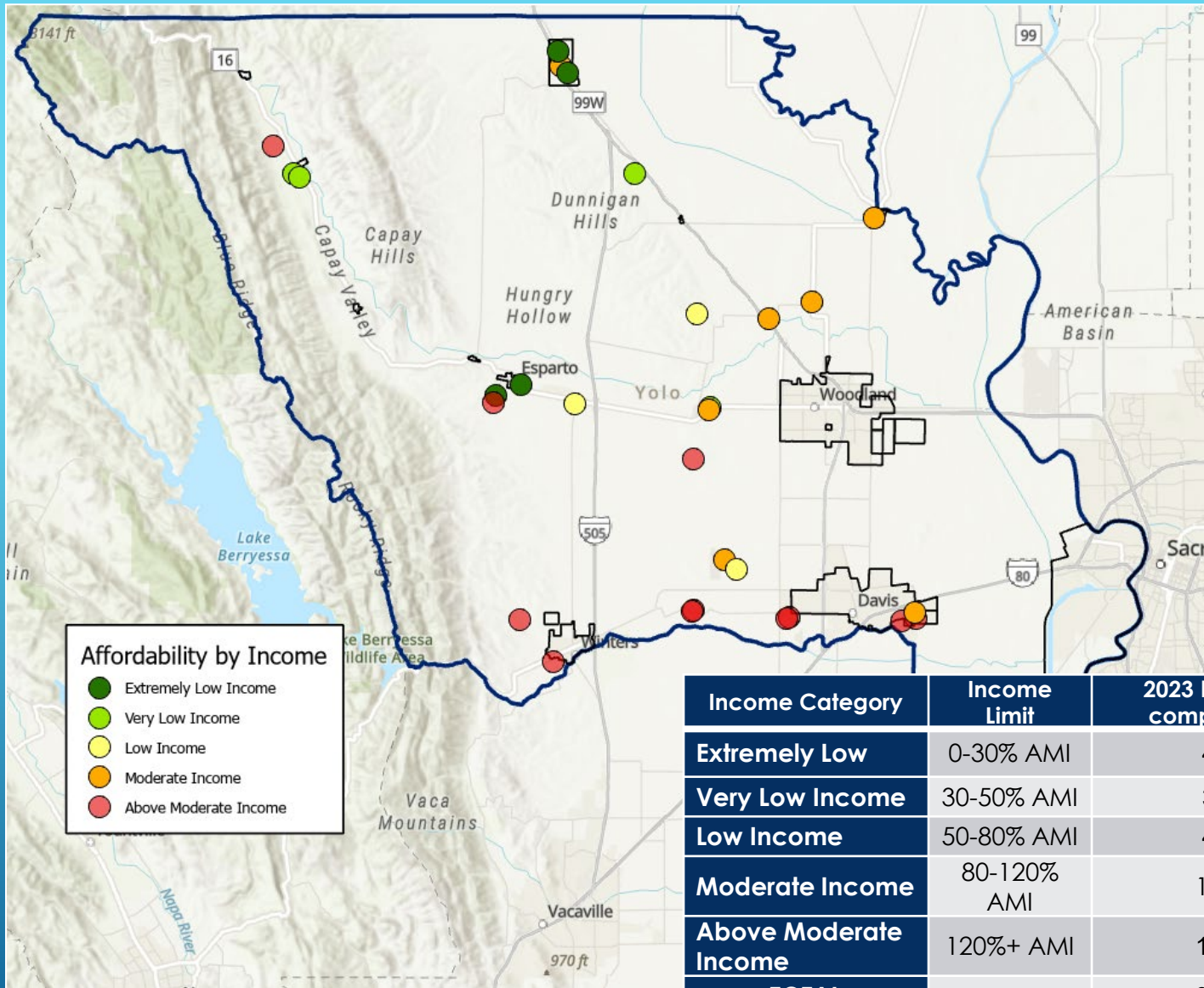
JD Trebec, Senior Planner

Housing Affordability in 2023

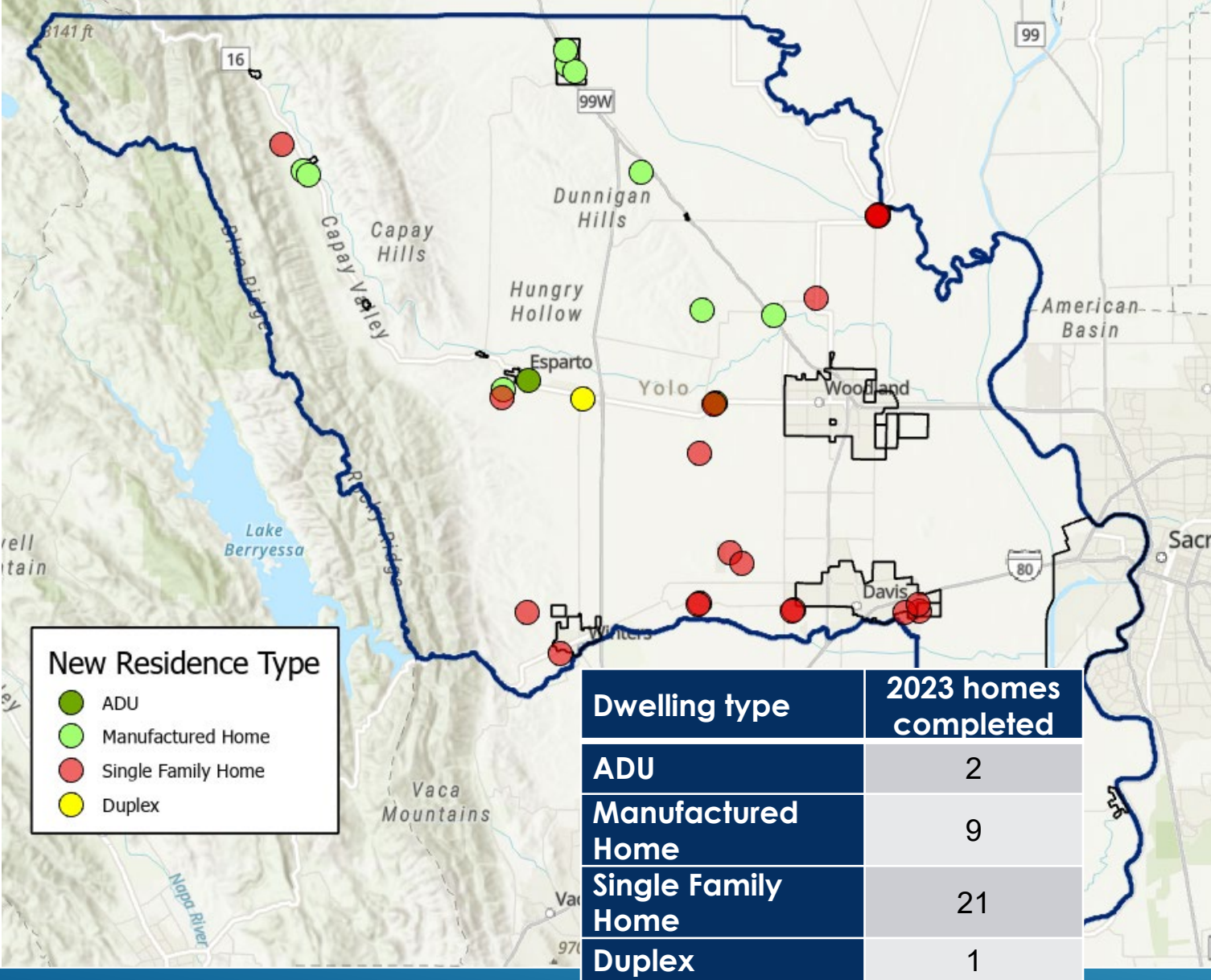
Median Income for four-member household in Yolo County: \$114,000

Income Category	Rent	Purchase Price
Extremely Low Income	<\$785	< \$75,000
Very Low Income	<\$1,400	< \$146,000
Low Income	<\$2,127	<\$217,000
Moderate Income	<\$3,555	<\$425,000

New Housing Locations by Affordability



New Housing Locations by Type



6th Cycle Regional Housing Needs Allocation (RHNA) Progress (2021-2023)

Income Category	Homes completed after June in 2021	Homes completed in 2022	Homes completed in 2023	6 th Cycle Cumulative Total	6 th Cycle RHNA requirement
Extremely Low	1	-	4	5	7
Very Low Income	-	3	3	6	7
Low Income	-	2	4	6	9
Moderate Income	9	-	11	20	10
Above Moderate Income	1	-	12	13	24
TOTAL	11	5	34	50	57

2030 Countywide General Plan Implementation Action Progress

General Plan Element	Total Actions	Ongoing Actions	Completed	Remaining Actions
Land Use and Community Character	35	10	13	12
Circulation	31	14	5	12
Public Facilities and Services	75	53	10	12
Agriculture and Economic Development	62	25	20	17
Conservation and Open Space	131	75	16	40
Health and Safety	99	86	1	13
Housing	34	18	2	14
TOTAL	468	275	42	151