

Upper Yolo Bypass Planning Process Briefing to Yolo County BOS

June 4, 2024

Introductions

Opening Remarks – Steve Rothert, Division Manager, Division of Multibenefit Initiatives, DWR

Presenter – Eric Nagy, Principal, Larsen Wurzel & Associates

Presenter – Melanie Saucier, Principal Planner, Sacramento Area Flood Control Agency (SAFCA)

Presenter – Tom Chapman, Project Manager, HDR

- 1 Historical Context
- 2 Upper Yolo Bypass
Planning Process
- 3 Local Preferences Memo
- 4 Upper Yolo Bypass Plan
- 5 Connection to USACE
Comprehensive Study

Historical Context

- Yolo Bypass common focus of recent planning efforts.
 - Central Valley Flood Protection Plan (2012, 2017, 2022)
 - Regional Flood Management Plan (2014)
 - Corridor Management Framework (2015)
 - Sacramento River Basinwide Feasibility Study (2017)
 - Sacramento River General Reevaluation Report (2018)
- Goal is to improve integration of historically competing water resource objectives.
- Implementation is underway.





Partnership Vision

“Since 2016, Partner agencies have been developing a program that encourages collaboration and regional solutions to implement landscape-level change.”

Planning Pillars



FLOOD



HABITAT



WATER SUPPLY



AGRICULTURE

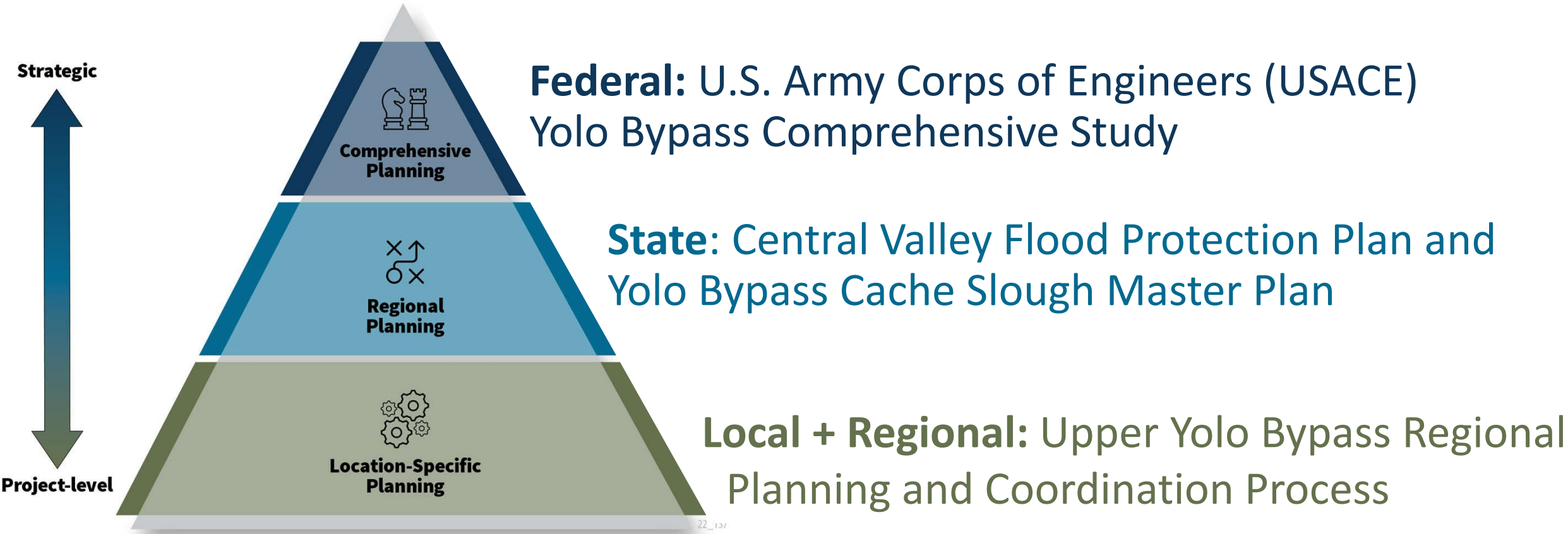


RECREATION



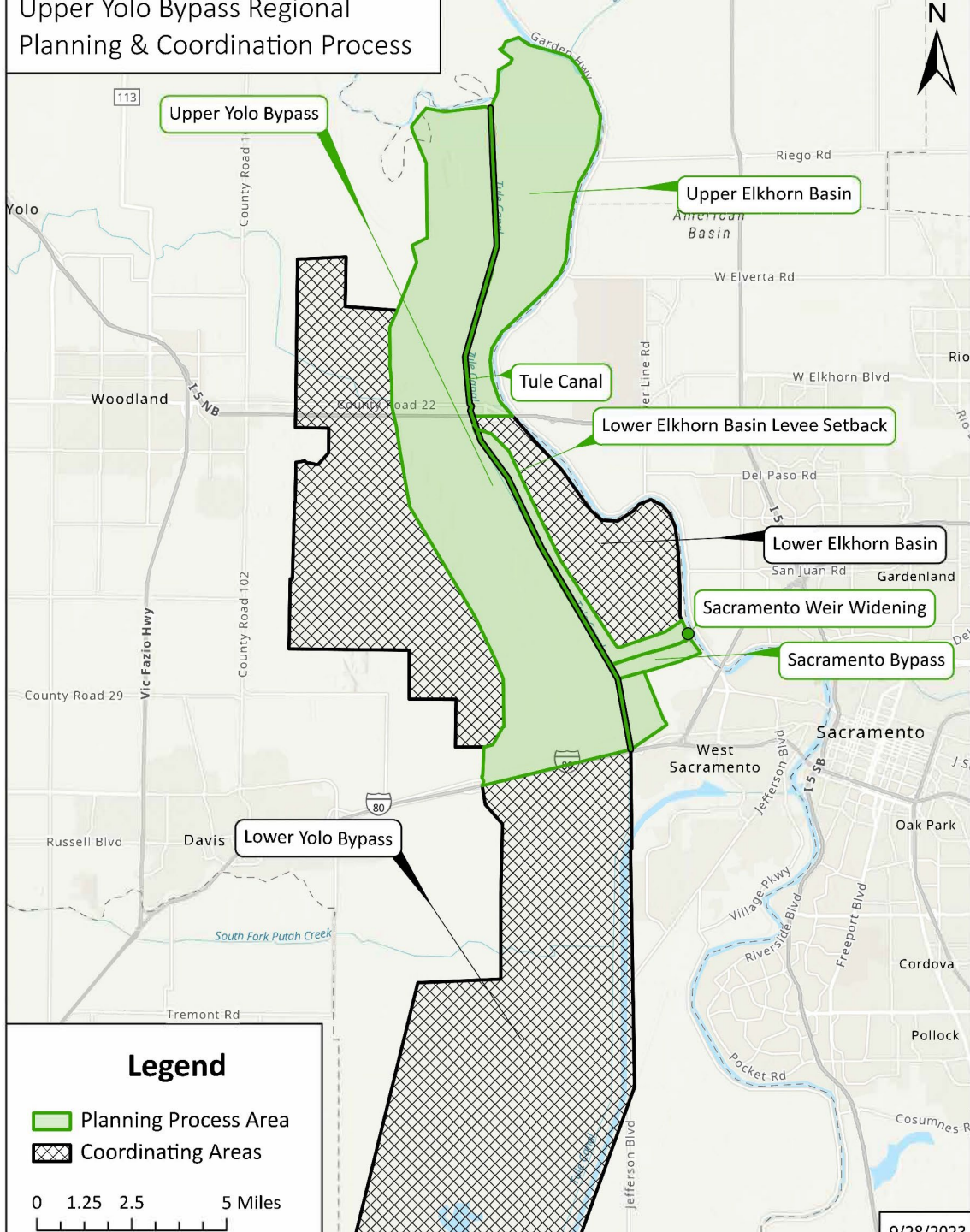
WATER QUALITY

Planning Context & Alignment



Source: Flood Management Funding Essentials 2022 Update

- 1 Historical Context
- 2 Upper Yolo Bypass
Planning Process**
- 3 Local Preferences Memo
- 4 Upper Yolo Bypass Plan
- 5 Connection to USACE
Comprehensive Study



Upper Yolo Bypass Planning Process

- Started in May 2023 with grant from DWR to partner SAFCA
- SAFCA is facilitating the Planning Process and part of the Non-Federal Sponsor team.
- Goal is to **engage proactively with Yolo County, local government agencies, and other interested parties** regarding flood management, agriculture, water supply reliability, habitat, water quality, and recreation within the Upper Yolo Bypass (Fremont Weir to I-80)



Steering Committee Membership

- **Yolo County** – Sabrina Snyder
- **RD 1600** – Michelle Clark
- **DWR** – Mary Jimenez, David Pesavento, Steve Rothert
- **CVFPB** – Ruth Darling
- **SAFCA** – Gary Bardini, Melanie Saucier
- **Consultant Team Support**



Interested Parties

- Engaging diverse interests and needs throughout the Upper Yolo Bypass
 - Yolo County
 - Reclamation Districts 1600, 537, 2035, 900, 1000
 - Yolo Land Trust
 - Sac Valley Conservancy
 - Yolo Farm Bureau
 - Ecosystem Investment Partners
 - Conaway Ranch
 - City of Woodland
 - Cal. Dept. of Fish and Wildlife
 - Farmers
 - Landowners and Tenants
 - Yolo Flood Control & Water District
 - Yolo Basin Foundation

Presentation to Yolo Bypass Landowners in October 2023

- 1 Historical Context
- 2 Upper Yolo Bypass Planning Process
- 3 Local Preferences Memo**
- 4 Upper Yolo Bypass Plan
- 5 Connection to USACE Comprehensive Study

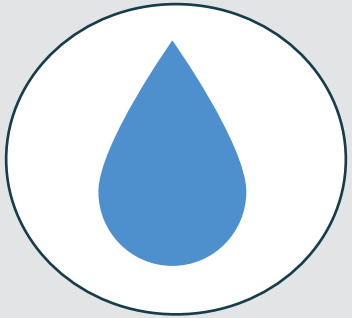
Local Preferences Memo

- Documents outreach process
- Introduced proposed regional flood protection and habitat (Tule Canal) features
- Documents associated questions and concerns
- Defines locally preferred actions within Upper Yolo Bypass and adjacent areas
- Reviewed by Steering Committee
- Draft provided to all interested parties



Tule Canal Looking South

Planning Constraints: Avoid or Minimize



- Unacceptable hydraulic impact to flood system downstream of the Fremont Weir.



- Disturbance to private property. Keep as much land as possible in private ownership and maintain existing uses.
- Disturbance to existing habitat mitigation areas.
- Disturbance to existing managed wetlands.



- Impacts to RD 1600 O&M assessment revenue.
- Reduction in property tax revenues collected by Yolo County.



- Impact to existing agricultural conservation easements.
- Impact to farming during construction and operations post-construction.
- Farmland as borrow areas.

Locally Requested Activities From Outreach

3

Mitigation Measures. Activities and processes needed to ease project impacts. Example: Support Implementation of the Yolo Habitat Conservation Plan.

22

Projects. On-the ground modifications. Example: Levee repairs in RD 1600 and Knights Landing Basin.

4

Actions. Non-ground moving activities (e.g., a funding strategy, committee, or maintenance plan). Example: Identify potential revenue streams for operations and maintenance.

- 1 Historical Context
- 2 Upper Yolo Bypass Planning Process
- 3 Local Preferences Memo
- 4 Upper Yolo Bypass Plan**
- 5 Connection to USACE Comprehensive Study

Upper Yolo Bypass Plan

Purpose: Establish and clearly articulate concepts advancing each of the Partnership's six priority areas—flood, agriculture, habitat, water supply, water quality, and recreation—through the identification of recommended activities in the Upper Yolo Bypass.

What it will include:

- Conceptual level cost and benefit information/alternatives
- Input and preferences from interested parties
- Recommended alternative(s) and associated implementation pathway (USACE or Non-Federal sponsor)



What it will NOT include:

- Commitments
- Detailed engineering designs
- Property-specific impacts
- NEPA/CEQA
- Information on land acquisition process



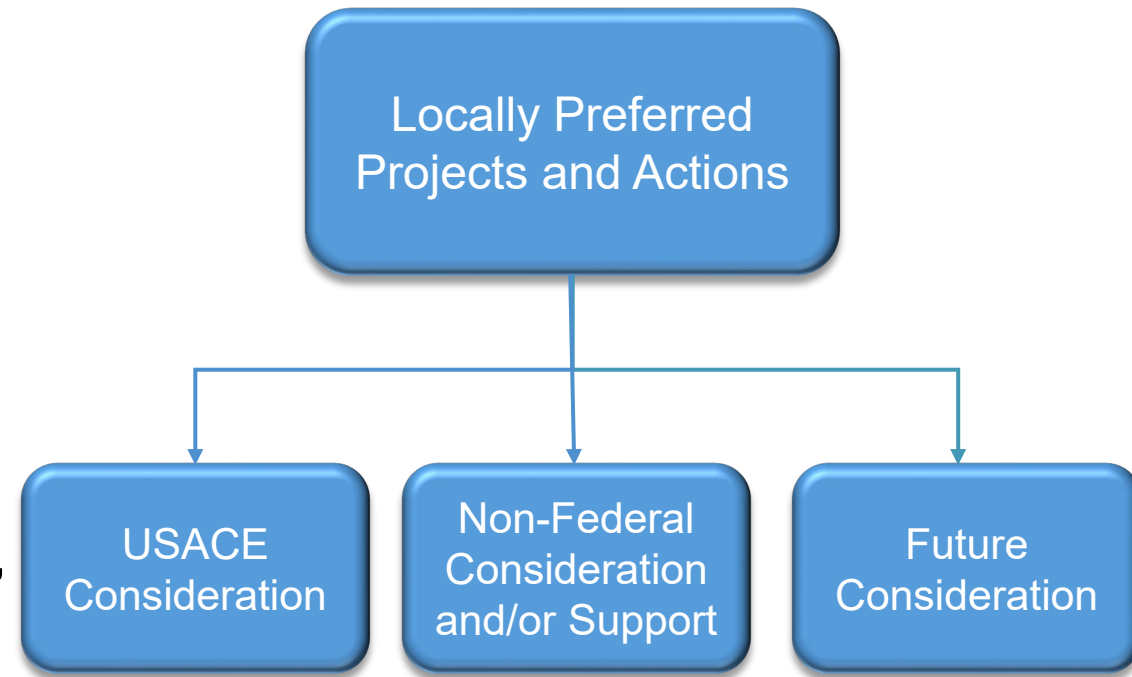
Upper Yolo Bypass Plan: Outline

- Chapter 1: Background
- Chapter 2: Problems, Opportunities, Objectives, and Constraints
- Chapter 3: Existing and Future Without Project Conditions
- Chapter 4: Locally Preferred Actions
- Chapter 5: Alternative Formulation
- Chapter 6: Alternative Evaluation and Comparison
- Chapter 7: Conclusions and Next Steps



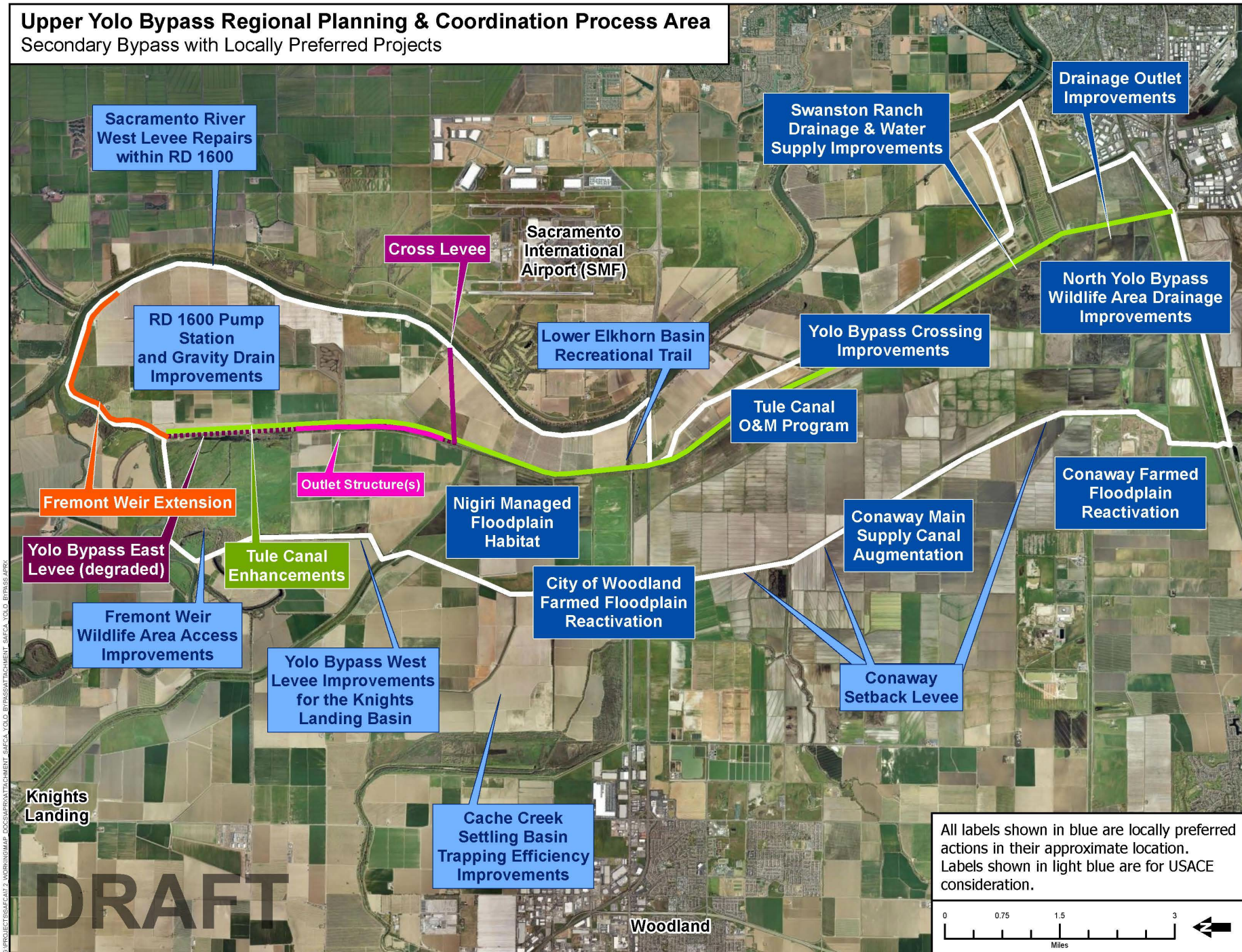
Conceptual Alternatives Development

- Developed alternatives (solutions) that address all six pillars
- Categorized locally preferences based on expected implementation pathway
 - USACE consideration
 - Non-Federal consideration and/or support (state, local, etc.)
 - Future consideration in other efforts
- Add suite of locally preferred projects and actions to flood alternatives (setback levee and secondary bypass) and Tule Canal alternatives



Alternatives For Consideration: Secondary Bypass with Locally Preferred Projects

Upper Yolo Bypass Regional Planning & Coordination Process Area
Secondary Bypass with Locally Preferred Projects



Key:
Light blue = for USACE Consideration
Dark blue = for non-federal consideration and/or support

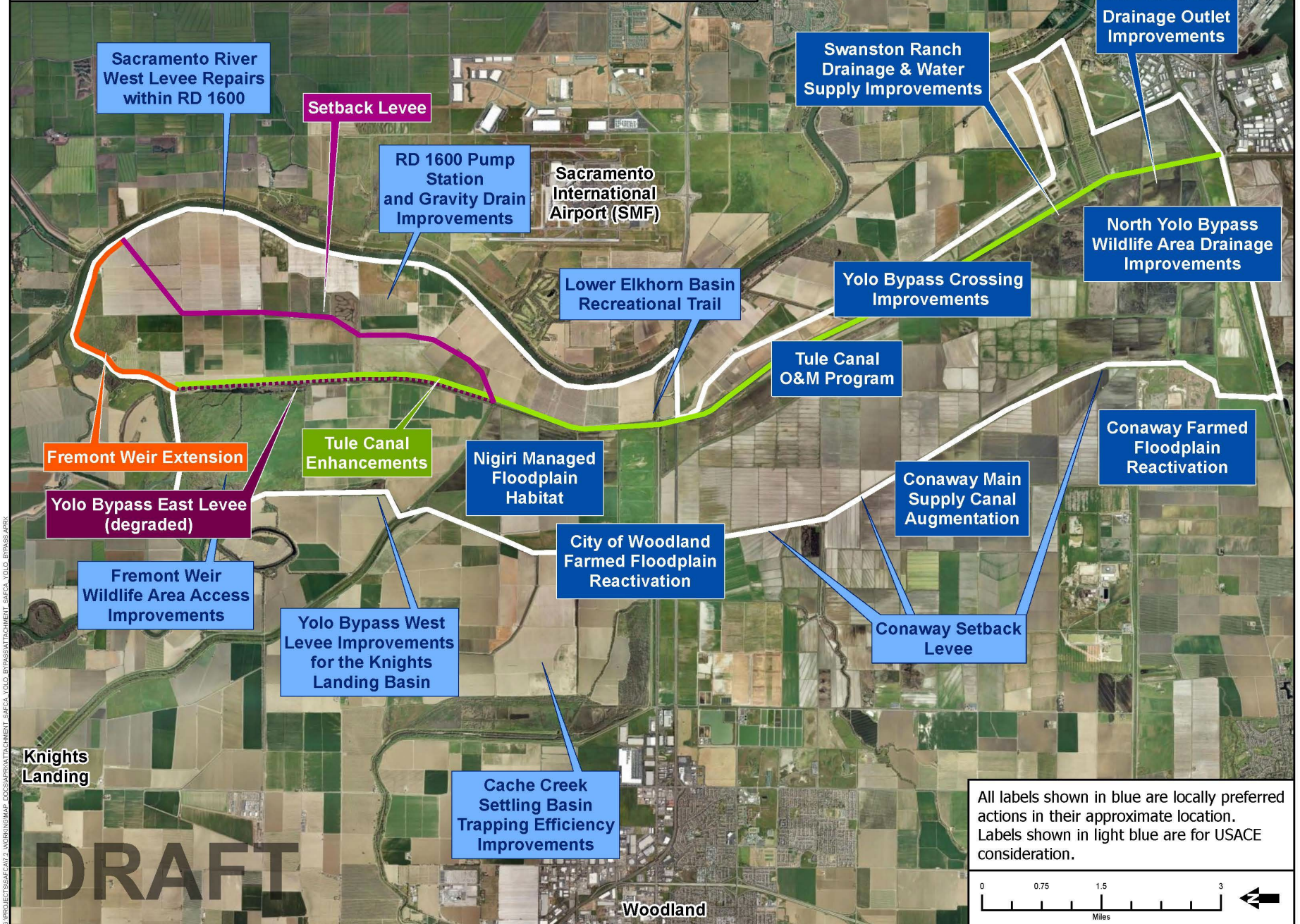
DRAFT

All labels shown in blue are locally preferred actions in their approximate location. Labels shown in light blue are for USACE consideration.

0 0.75 1.5 3 Miles

Alternatives For Consideration: **Setback Levee** with Locally Preferred Projects

Upper Yolo Bypass Regional Planning & Coordination Process Area
 Preliminary Setback with Locally Preferred Projects



C:\PROJECTS\SACANT2\MORNINGMAP_DOCS\APPROXIMATE\SACCA_YOLO_BYPASS\ATTACHMENT_SACCA_YOLO_BYPASS_APRX

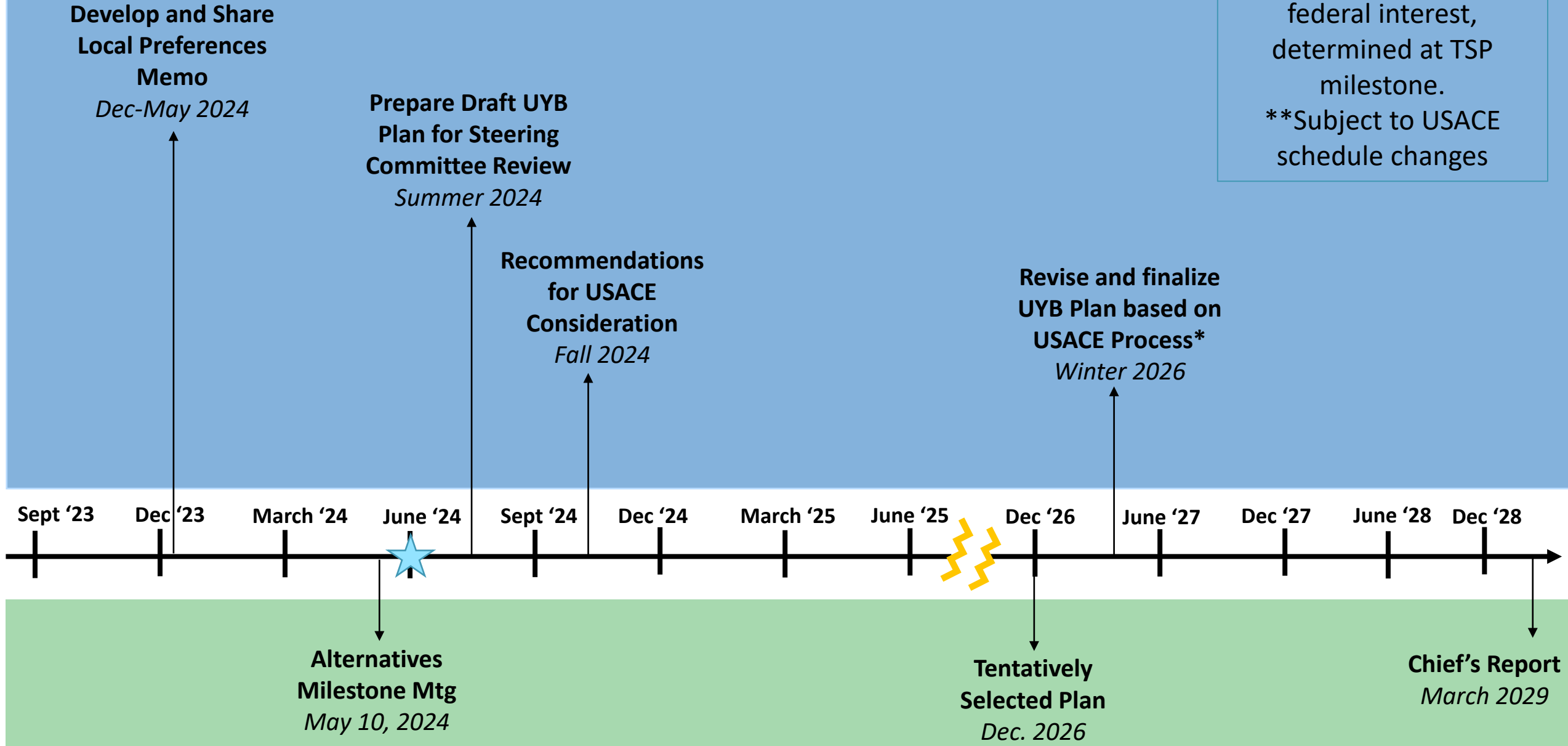
- 1 Historical Context
- 2 Upper Yolo Bypass Planning Process
- 3 Local Preferences Memo
- 4 Upper Yolo Bypass Plan
- 5 Connection to USACE Comprehensive Study**

Connection to USACE Comprehensive Study

- The Comprehensive Study originated from the passage of the federal Water Resources Development Act (or WRDA) in Dec 2020.
 - System-wide analyses of the Yolo Bypass Program
 - Without local input, USACE recommendations may not be responsive to local needs and conditions
 - USACE will identify what concepts qualify for "federal interest". i.e., potential funding
- Non-Federal Sponsors: State of California and SAFCA
 - Role is to share technical information and knowledge of the region, potential projects, and provide input on the non-federal sponsor's preferred alternatives.

Upper Yolo Planning Process Schedule

Notes
* Steps conditional on federal interest, determined at TSP milestone.
**Subject to USACE schedule changes



USACE Yolo Bypass Comprehensive Study Process**

Next Steps

- Continued outreach
 - Farm Bureau and Yolo County Landowners Newsletter updates
 - Additional meetings with Reclamation Districts and landowners/tenants and farmers
 - Future Board of Supervisor meetings
- DRAFT Upper Yolo Bypass Plan
- Continue coordination with USACE on Comprehensive Study
- Explore additional analysis on agriculture economic impacts and benefits