

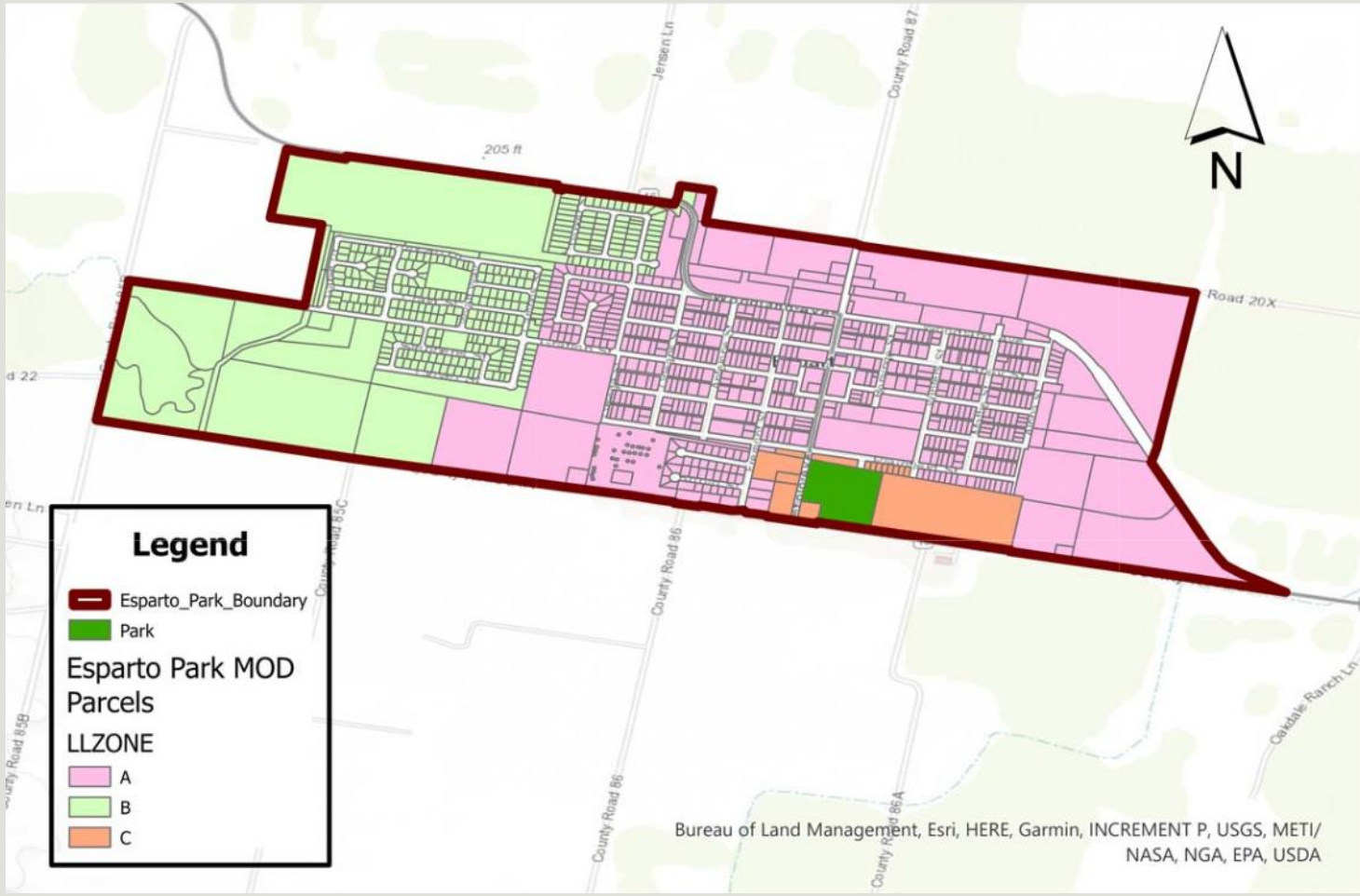
Tuli Mem Aquatic Park Maintenance and Operation Assessment District for 2024-2025

YOLO COUNTY BOARD OF SUPERVISORS

JUNE 25TH, 2024

Proposed Assessment Rates

Zone	FY 18-19	FY 19-20	FY 20-21	FY 21-22	FY 22-23	FY 23-24	FY 24-25
Zone A	\$78.38	\$80.72	\$83.14	\$85.28	\$87.84	\$90.46	\$93.18
Zone B	\$62.70	\$64.58	\$66.52	\$68.22	\$70.26	\$72.38	\$74.54
Zone C	\$78.38	\$80.72	\$83.14	\$85.28	\$87.84	\$90.46	\$93.18



District Boundary Map

Adopting the Annual Assessment

1

- Engineer's Report
- Resolution to hold a public hearing approved by the Board on May 7, 2024

2

- Public notice published June 14, 2024

3

- Public Hearing June 25th, 2024
- Adopt resolution continuing the levy of assessments for FY 2024-2025