

ATTACHMENT B

**KNIGHTS LANDING DRAINAGE INFRASTRUCTURE IMPROVEMENTS PROJECT
PROJECT PLANS**

(The version of the plans attached to this staff report have been resized to 8.5" x 11")

COUNTY OF YOLO

PROJECT PLANS FOR CONSTRUCTION OF

KNIGHTS LANDING FLOOD MANAGEMENT PROJECT

SMALL COMMUNITIES FLOOD RISK REDUCTION PROGRAM PHASE 2

VOLUME 3 OF 3

KNIGHTS LANDING DRAINAGE IMPROVEMENT PLANS



LIST OF CONTRACT VOLUMES:

VOLUME 1: CONTRACT SPECIFICATIONS

VOLUME 2: TECHNICAL SPECIFICATIONS

VOLUME 3: KNIGHTS LANDING DRAINAGE IMPROVEMENTS PLANS

REV.	DATE	BY	CHK.	APPR.	DESCRIPTION

DESIGNED BY:
C. CONTRERAS
DRAWN BY:
J. KALIN, J. PREST
CHECKED BY:
C. CONTRERAS
IN CHARGE:
J. KORS
DATE:
04/30/24



IMPROVEMENT PLANS FOR
KNIGHTS LANDING DRAINAGE IMPROVEMENTS
TITLE SHEET AND COUNTY LOCATION MAP

SCALE	NA
HORIZ.	NA
VERT.	NA
SHEET	1
OF	10

I:\3301D ST\Bldg 100-B\Projects\3301D ST\Bldg 100-B\Drawings\TitleSheet\TitleSheet.dwg 1/25/2024 10:56 AM Jerry Parris

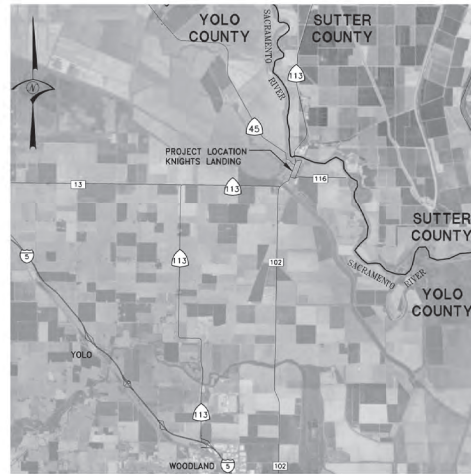
IMPROVEMENT PLANS FOR KNIGHTS LANDING DRAINAGE IMPROVEMENTS

FOR BID

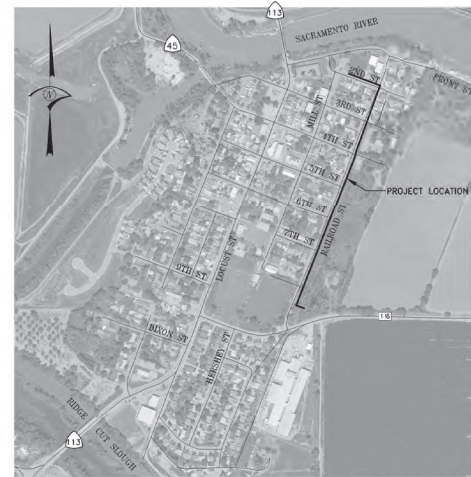
TOWN OF KNIGHTS LANDING

YOLO COUNTY, CALIFORNIA

PROPOSED	EXISTING	
		STORM DRAIN AND MANHOLE
		SANITARY SEWER AND MANHOLE
		FIRE HYDRANT AND VALVE ASSEMBLY
		WATER MAIN, VALVE, AIR RELEASE VALVE & BLOWOFF VALVE
		OVERHEAD LINE
		TELEPHONE (BURIED)
		FENCE
		LOW PROFILE CURB, GUTTER, AND SIDEWALK
		VERTICAL CURB, GUTTER, AND SIDEWALK WITH DROP LAYER
		CURB OR CURB AND GUTTER
		CATCH BASIN OR DRAINAGE INLET
		CURB INLET
		GRATE INLET
		CENTER LINE
		PROPERTY LINE
		RIGHT OF WAY
		EASEMENT
		EDGE OF PAVEMENT
		FLOWLINE OF DITCH OR SWALE
		DIRECTION OF SURFACE DRAINAGE FLOW
		CUT OR FILL SLOPE
		UTILITY POLE WITH DOWN GUY & ANCHOR
		POWER POLE, TELEPHONE POLE, JOINT POLE
		SURVEY MONUMENT
		SIGN
		TREE
		TREE TO BE REMOVED
		EXISTING GROUND SURFACE ELEVATION
		EDGE OF PAVEMENT AND ELEVATION
		DRAINAGE DITCH
		SECTION OR DETAIL NO./REFERENCE SHEET NO.
		SEASONAL WETLANDS (NO CONSTRUCTION ACCESS ALLOWED)



PROJECT LOCATION MAP
1"=8000'



VICINITY MAP
1"=500'

SHEET INDEX

1. TITLE SHEET AND COUNTY LOCATION MAP
2. PROJECT LOCATION MAP, VICINITY MAP, SHEET INDEX, AND LEGEND
3. GENERAL NOTES AND ABBREVIATIONS
4. TYPICAL STREET SECTIONS
5. PLAN AND PROFILE- RAILROAD STREET STA 0+00 TO 5+00
6. PLAN AND PROFILE- RAILROAD STREET STA 5+00 TO 10+00
7. PLAN AND PROFILE- RAILROAD STREET STA 10+00 TO 15+00
8. PLAN AND PROFILE- RAILROAD STREET STA 15+00 TO 20+00
9. PLAN AND PROFILE- RAILROAD STREET STA 20+00 TO 24+00
10. PLAN AND PROFILE- 2ND STREET STA 1+44.07 TO 5+00

UTILITY/AGENCY CONTACTS			
UTILITY	P.G. & E.	REPRESENTATIVES	PHONE
GAS	P.G. & E.	CRYSTALE ALESSIO-MEDRANO	916-386-5453
ELECTRICITY	P.G. & E.	CRYSTALE ALESSIO-MEDRANO	916-386-5453
TELEPHONE	AT&T	SHARON DINNELL	208-247-8547
CABLE	FRONTIER	STEPHEN McDONALD	805-374-3766
WATER	KL COMMUNITY SERVICE DISTRICT	LEO REFSLAND	530-383-4049
SEWER	KL COMMUNITY SERVICE DISTRICT	LEO REFSLAND	530-383-4049
DRAINAGE	YOLO COUNTY	TODD RIDGBOUGH	530-666-8039
FIRE	KL FIRE PROTECTION DISTRICT	MIKE VOGL	530-735-8409

BENCH MARK	
NAME: F859	ELEV: 46.424 (NAVD 88)
DESCRIPTION:	
STATION IS A BRASS DISK WITH STAMPING F 859 RESET, LOCATED SOUTHWEST OF THE TOWN OF KNIGHTS LANDING IN THE BRIDGE OVER KNIGHTS LANDING RIDGE CUT SLOUGH, 315' NORTHEAST OF THE INTERSECTION OF HIGHWAY 113 AND ROAD EB, 22' NORTHWEST OF THE CENTERLINE OF HIGHWAY 113, 15.1' NORTHEAST OF THE SOUTHWEST END OF THE BRIDGE, 0.7' SOUTHEAST OF THE BRIDGE WALL AND SET IN THE SIDEWALK OVER THE BRIDGE ABUTMENT.	

REV.	DATE	BY	CHK.	APPR.	DESCRIPTION

DESIGNED BY:
C. CONTRERAS
DRAWN BY:
J. KAUF, J. PRIEST
CHECKED BY:
C. CONTRERAS
IN CHARGE:
J. KOPS
DATE:
04/30/24

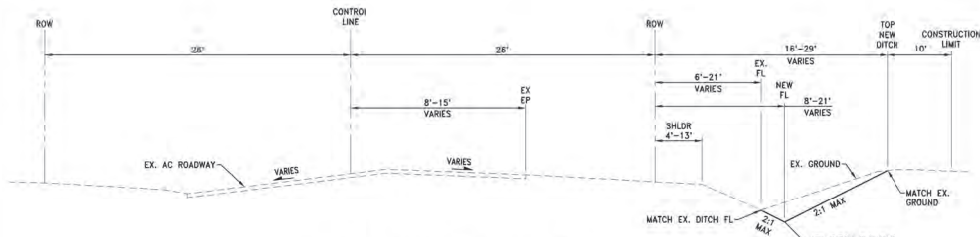


WOOD RODGERS
BUILDING RELATIONSHIPS ONE PROJECT AT A TIME
3301 D ST, BLDG. 100-B TEL 916.341.7760
SACRAMENTO, CA 95816 FAX 916.341.7767

IMPROVEMENT PLANS FOR
KNIGHTS LANDING DRAINAGE IMPROVEMENTS
PROJECT LOCATION MAP, VICINITY MAP,
SHEET INDEX, AND LEGEND

SCALE
HORIZ. = NA
VERT. = NA
SHEET
2
OF
10

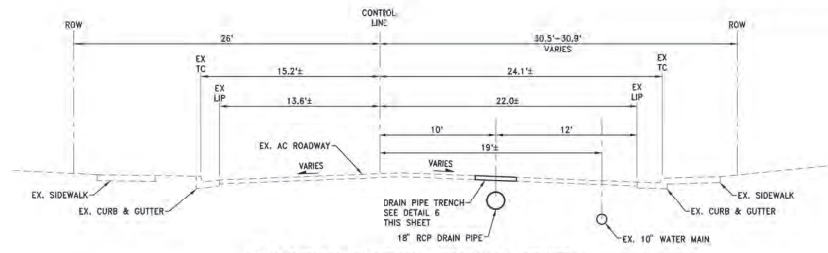
FOR BID



1 TYPICAL SECTION - RAILROAD STREET

SCALE: 1"=5'

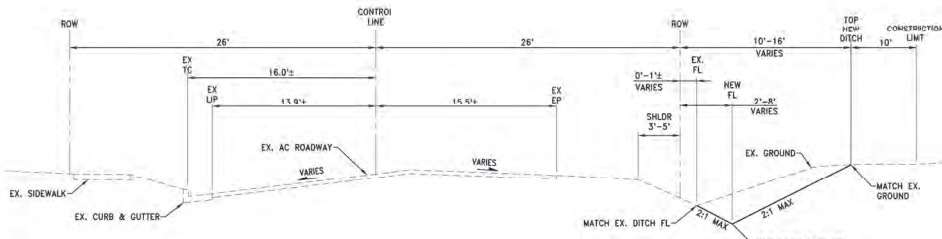
STA. 24+57.24 TO 10+44.02
*DITCH BEGINS AT STA 4+74.31



4 TYPICAL SECTION - RAILROAD STREET

SCALE: 1"=5'

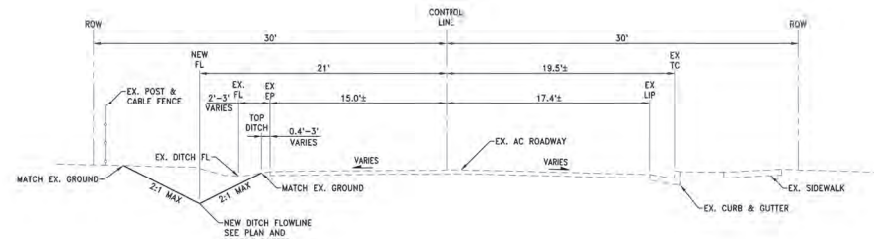
STA. 19+21.46 TO 22+65.61



2 TYPICAL SECTION - RAILROAD STREET

SCALE: 1"=5'

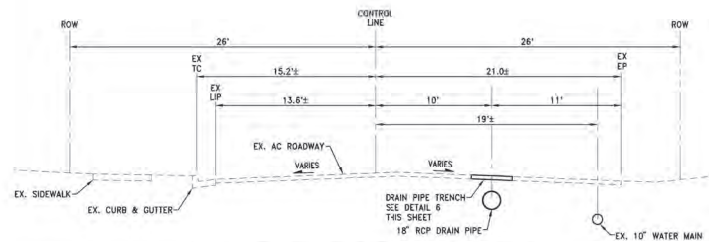
STA. 10+44.02 TO 16+29.25



5 TYPICAL SECTION - 2ND STREET

SCALE: 1"=5'

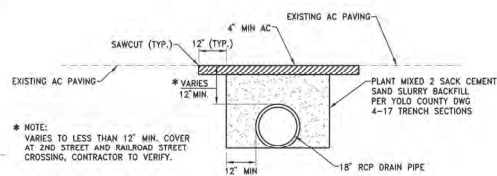
STA. 2+13.30 TO 5+14.00



3 TYPICAL SECTION - RAILROAD STREET

SCALE: 1"=5'

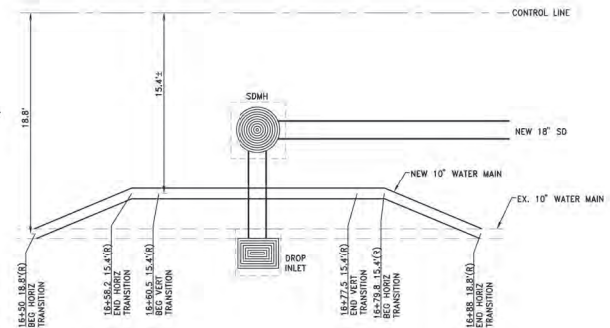
STA. 16+29.25 TO 19+44.62



* NOTE:
VARIES TO LESS THAN 12" MIN. COVER
AT 2ND STREET AND RAILROAD STREET
CROSSING, CONTRACTOR TO VERIFY.

6 DRAIN PIPE TRENCH

SCALE: NTS



7 STA 16+69 UTILITY CROSSING PLAN

SCALE: 1"=5'

* NOTE: CONSTRUCT HORIZONTAL AND VERTICAL
CROSSING IN ACCORDANCE WITH COUNTY OF YOLO
DWG 8-10
• HORIZONTAL PIPE: C-900 PVC
• VERTICAL PIPE: DIP MATERIAL

DESIGNED BY: C. CONTRERAS	DRAWN BY: J. KAUF, J. PRIEST
CHECKED BY: C. CONTRERAS	IN CHARGE: J. KOES
DATE: 04/30/24	



IMPROVEMENT PLANS FOR
KNIGHTS LANDING DRAINAGE IMPROVEMENTS
TYPICAL STREET SECTIONS

SCALE HORIZ. = NA VERT. = NA
SHEET 4 OF 10

REV.	DATE	BY	CHK.	APPR.	DESCRIPTION
------	------	----	------	-------	-------------

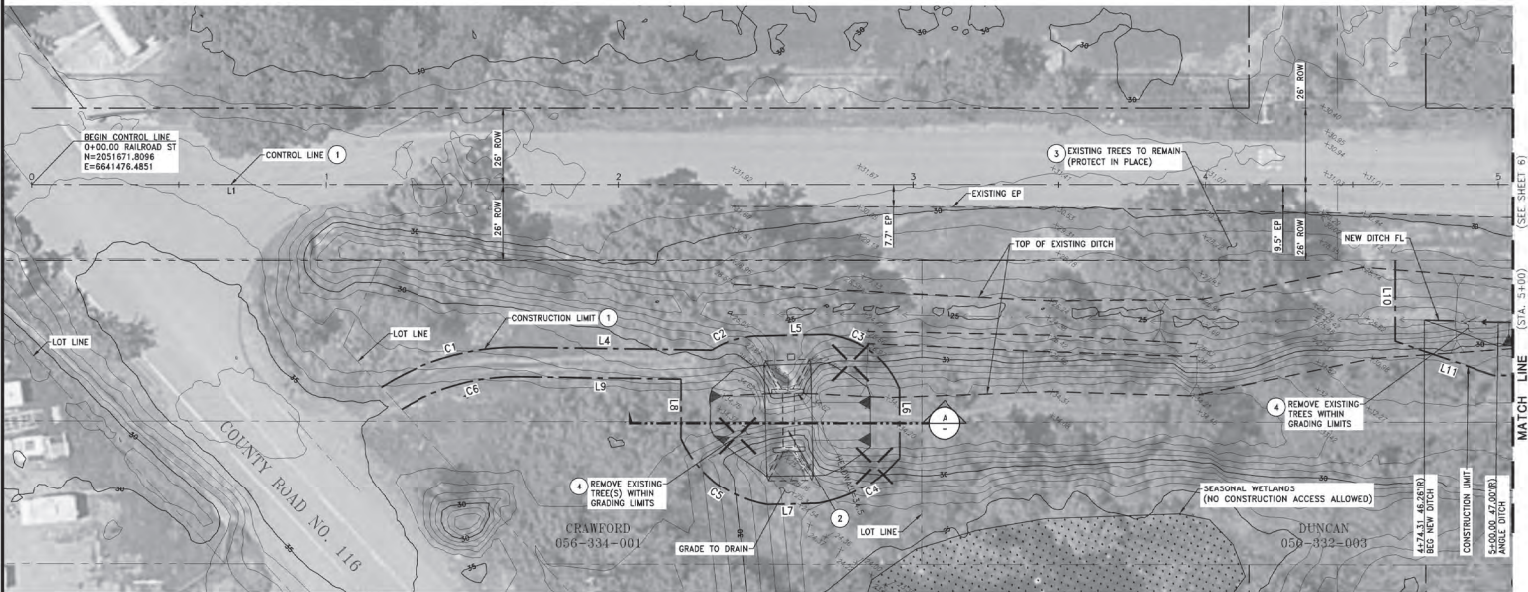
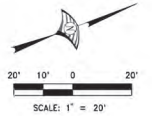
FOR BID

CONSTRUCTION NOTE:

- 1 SEE THIS SHEET FOR RAILROAD STREET CONTROL LINE DATA TABLE AND CONSTRUCTION LIMIT LINE DATA TABLE.
- 2 REMOVE AND DISPOSE EXISTING CONCRETE CULVERT AND HEADWALL STRUCTURES. BACKFILL AND REGRADE BOTTOM OF EXCAVATION TO DRAIN TO EXISTING DRAINAGE ELEVATIONS.
- 3 EXISTING TREE(S) TO REMAIN, PROTECT IN PLACE.
- 4 REMOVE EXISTING TREE(S) AND VEGETATION WITHIN GRADING LIMITS AS PART OF CLEAR AND DRIBBING. CONSTRUCTION INSPECTOR SHALL CONFORM ALL TREES BEFORE BEGINNING REMOVAL.

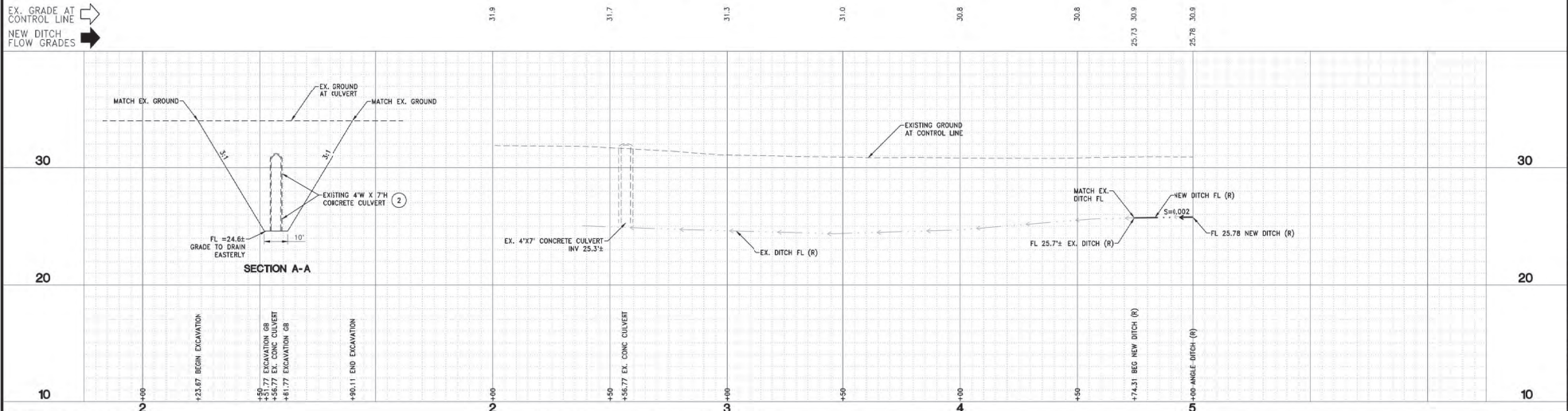
CONTROL LINE TABLE		
LINE #	BEARING	LENGTH
L1	N21°12'47"E	744.79
L2	N21°13'45"E	299.97
L3	N21°12'37"E	1499.84

CONSTRUCTION LIMIT LINE TABLE			CONSTRUCTION LIMIT CURVE TABLE			
LINE #	BEARING	LENGTH	Curve #	Length	Radius	Delta
L4	N22° 02' 23.75" E	65.558	C1	50.018	85.000	033.7158
L5	N19° 55' 21.02" E	21.694	C2	18.203	30.673	034.0024
L6	S89° 02' 01.71" E	23.455	C3	32.503	29.861	062.3660
L7	S19° 40' 53.37" W	17.608	C4	32.323	48.996	038.1099
L8	N68° 36' 45.71" W	20.226	C5	38.712	39.373	056.3347
L9	S22° 02' 23.75" W	55.194	C6	42.418	75.000	032.4049
L10	S88° 47' 12.69" E	27.453				
L11	N40° 05' 19.28" E	35.839				
L12	N21° 12' 52.98" E	275.618				
L13	N18° 24' 31.70" E	325.631				
L14	N20° 53' 12.30" E	517.552				



RAILROAD STREET

EX. GRADE AT CONTROL LINE
NEW DITCH FLOW GRADES



REV.	DATE	BY	CHK.	APPR.	DESCRIPTION

DESIGNED BY:
C. CONTRERAS
DRAWN BY:
J. KAUF, J. PRIEST
CHECKED BY:
C. CONTRERAS
IN CHARGE:
J. KORS
DATE:
04/30/24



WOOD RODGERS
BUILDING RELATIONSHIPS ONE PROJECT AT A TIME
3301 C ST., BLDG. 100-B TEL 916.341.7760
SACRAMENTO, CA 95816 FAX 916.341.7767

IMPROVEMENT PLANS FOR
KNIGHTS LANDING DRAINAGE IMPROVEMENTS
PLAN & PROFILE - RAILROAD STREET
STA 0+00 TO 5+00

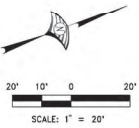
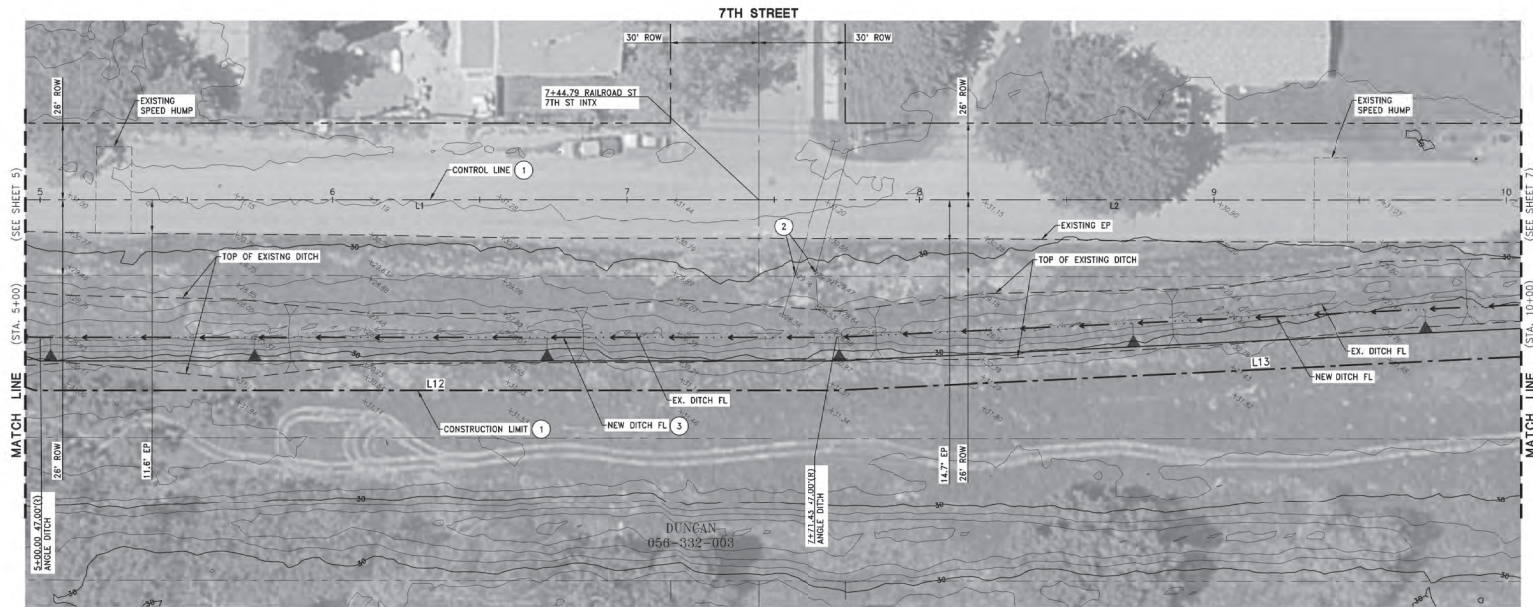
SCALE
HORIZ. = 1" = 20'
VERT. = 1" = 4'

SHEET
5
OF
10

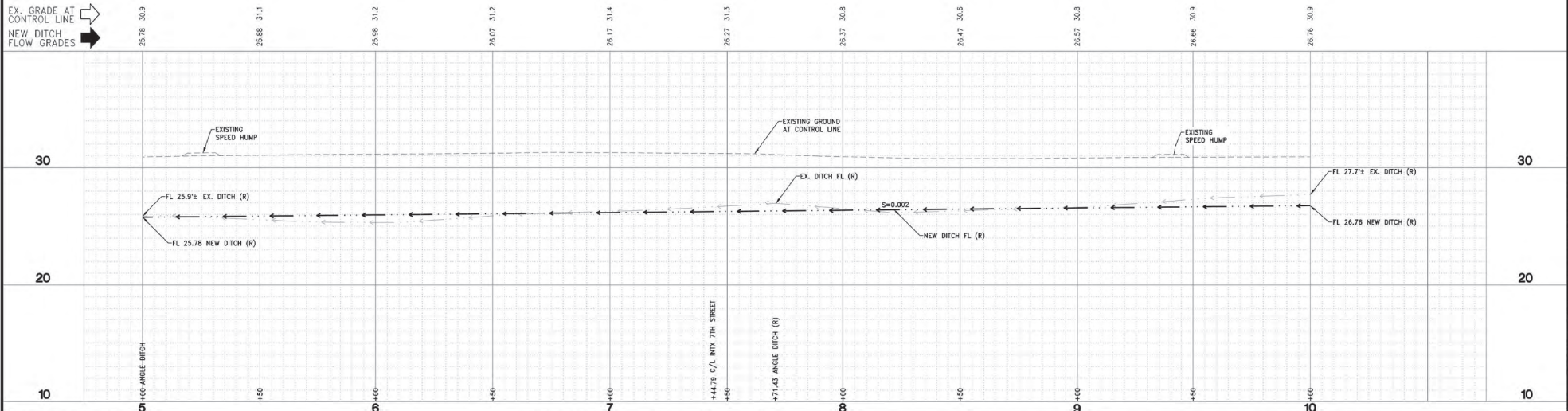
FOR BID

CONSTRUCTION NOTE:

- 1 SEE SHEET 5 FOR RAILROAD STREET CONTROL LINE DATA TABLE AND CONSTRUCTION LIMIT LINE DATA TABLE.
- 2 EXISTING GUY POLE AND ANCHORS TO REMAIN, PROTECT IN-PLACE.
- 3 REMOVE EXISTING TREE(S) AND VEGETATION WITHIN GRADING LIMITS AS PART OF CLEAR AND GRUBBING. CONSTRUCTION INSPECTOR SHALL CONFIRM ALL TREES BEFORE BEGINNING REMOVAL.



EX. GRADE AT CONTROL LINE
NEW DITCH FLOW GRADES



DESIGNED BY: C. CONTRERAS	
DRAWN BY: J. KAUF, J. PRIEST	
CHECKED BY: C. CONTRERAS	
IN CHARGE: J. KORS	
DATE: 04/30/24	

WOOD RODGERS
 BUILDING RELATIONSHIPS ONE PROJECT AT A TIME
 3301 C ST., BLDG. 100-B TEL 916.341.7760
 SACRAMENTO, CA 95816 FAX 916.341.7767

IMPROVEMENT PLANS FOR
KNIGHTS LANDING DRAINAGE IMPROVEMENTS
 PLAN & PROFILE - RAILROAD STREET
 STA 5+00 TO 10+00

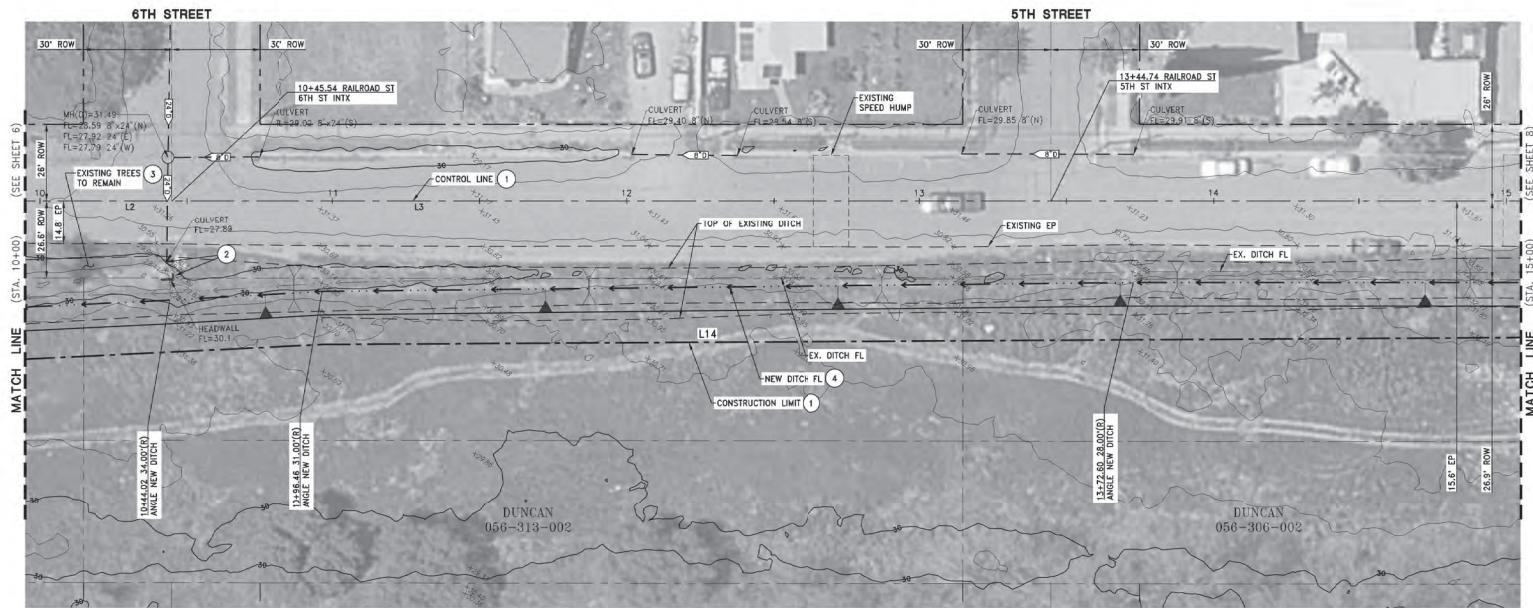
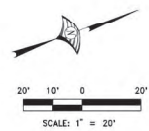
SCALE HORIZ. = 1"=20' VERT. = 1"=4'
SHEET 6 OF 10

REV.	DATE	BY	CHK.	APPR.	DESCRIPTION

FOR BID

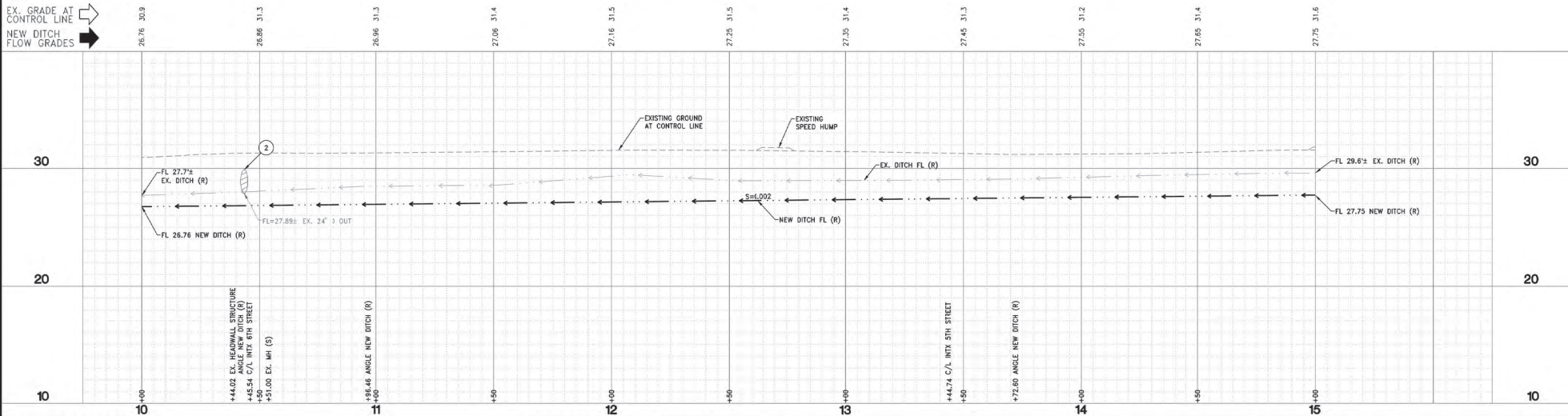
CONSTRUCTION NOTE:

- 1 SEE SHEET 5 FOR RAILROAD STREET CONTROL LINE DATA TABLE AND CONSTRUCTION LIMIT LINE DATA TABLE.
- 2 EXISTING 24" CULVERT AND HEADWALL TO REMAIN, PROTECT IN-PLACE. GRADE EXISTING DRAINAGE STRUCTURE FLOWLINE TO EXTEND TO NEW DITCH FLOWLINE ELEVATION.
- 3 EXISTING TREE(S) TO REMAIN, PROTECT IN PLACE.
- 4 REMOVE EXISTING TREE(S) AND VEGETATION WITHIN GRADING LIMITS AS PART OF CLEAR AND GRUBBING. CONSTRUCTION INSPECTOR SHALL CONFIRM ALL TREES BEFORE BEGINNING REMOVAL.



RAILROAD STREET

EX. GRADE AT CONTROL LINE
NEW DITCH FLOW GRADES



REV.	DATE	BY	CHK.	APPR.	DESCRIPTION

DESIGNED BY:
C. CONTRERAS
DRAWN BY:
J. KAUF, J. PRIEST
CHECKED BY:
C. CONTRERAS
IN CHARGE:
J. KORS
DATE:
04/30/24



WOOD RODGERS
BUILDING RELATIONSHIPS ONE PROJECT AT A TIME
3301 C ST., BLDG. 100-B TEL 916.341.7760
SACRAMENTO, CA 95816 FAX 916.341.7767

IMPROVEMENT PLANS FOR
KNIGHTS LANDING DRAINAGE IMPROVEMENTS
PLAN & PROFILE - RAILROAD STREET
STA 10+00 TO 15+00

SCALE HORZ. = 1"=20' VERT. = 1"=4'
SHEET 7 OF 10

S:\33009-1\3301-C\BUDG_Eng\Projects\3301000-Engineers\3301000-Plan\RAILROAD_ST.dwg 4/27/2024 11:22 AM Arseny Pirost

