

**COUNTY OF YOLO
General Services Department**

**WORK AUTHORIZATION
ARCHITECTURAL/ENGINEERING SERVICES**

Agreement Number: 24-17

BOS Agreement Number: 24-17

General Services Number: 5390

Project: Crisis Now Modular Building

Contractor: Moniz Architecture

Contact Person: Alicia Moniz **Phone:** 916-442-4032

Project Description:

Proposal for Architectural and Engineering Services for a modular building for the Crisis Now Program located at 2780 >e Gibson Road, Woodland, CA 95776

Task Definition, Assumptions and Deliverables: See Attachment

Total Cost for Work Order Authorization: \$124,830.00

Start Date: 8/30/2024

Completion Date: 7/31/2025

Approval: _____ Date: _____

Company:1000 **Fund:**Budget **Unit:** **Cost Center:**
Revenue Source: **Acct:**

Dept Details:



August 27, 2024

Chris Rice
Capital Projects Division Manager
Yolo County General Services Department
120 W Main Street Suite G
Woodland, CA 95695
530-406-5015
Chris.Rice@yolocounty.org

**PROPOSAL FOR ARCHITECTURAL & ENGINEERING SERVICES
FOR A MODULAR BUILDING FOR THE CRISIS NOW PROGRAM
2780 E. GIBSON ROAD, WOODLAND, CA**

I. PROJECT DESCRIPTION

A new 60ft x 60ft modular building and site improvements, approximately as shown on the attached **Exhibit B**, 3 pages.

II. SCOPE OF SERVICES

A. Schematic Design

1. Prepare schematic site and floor plans, incorporate HVAC shafts, layout accessible restrooms and showers
2. Prepare schematic utility and drainage plans
3. New service coordination with PG&E if required
4. Utility exploration services
5. Topographic survey of selected areas
6. Coordinate with Yolo County project manager to confirm the detailed needs for the space
7. Confirm occupancy and exiting requirements
8. Confirm requirements for fire wall locations, if any
9. Incorporate input from the County
10. Incorporate input from the County's furniture vendor regarding workstations

B. Construction Documents

1. Prepare construction documents for building and site systems
2. Prepare a progress set of documents for a 50% county review
3. Prepare an estimate of construction costs at 50% completion of the documents
4. Prepare an estimate of construction costs at 95% completion of the documents
5. Prepare architectural, civil, and electrical documents for use in acquiring a building permit
6. Review with County project manager and incorporate comments
7. Finalize documents for permit application

C. Plan check submittal and Response

Respond to plan check comments from the City of Woodland that are within the scope of services and project description

D. Bidding

Attend pre-bid walk and respond to bidders questions

E. Construction Administration

Provide construction administration services

F. Reimbursable Expenses

Expenses incurred for mileage and printing will be billed toward the allowance shown in Exhibit B.

G. Hourly services, as requested

1. Respond to contractor's questions
2. Review submittals
3. Make selected site visits
4. Assist in project punch list and close-out

III. FEE

As listed in the attached Cost Proposal **Exhibit A**, 2 pages

IV. EXCLUSIONS AND CLARIFICATIONS

As listed in the Cost Proposal Exhibit B

V. HOURLY AND ADDITIONAL SERVICES

For services in the scope of this proposal and for additional services not outlined in this proposal, the hourly rates are as listed below.

Principal Architect	\$195
Project Architect	\$165
Project Designer	\$155
CAD Drafter	\$115
Consulting Engineer	1.1 x cost

VI. CONTRACT

Terms and Conditions per County standard contract

Respectfully,



Alicia Moniz, AIA
CA state Architectural license no. 15135

Cost Proposal Exhibit A

Yolo County Modular Crisis Now Building Project

8/27/2024

moniz ARCHITECTURE	ARCH	CIVIL	ELEC	MECH	STRUCT	COST EST	REIMB	TOTAL
	MONIZ ARCHITECTURE	CUNNINGHAM ENGINEERING	CAPITAL CITY DESIGN	TURLEY ASSOCIATES	BUEHLER	SIERRA WEST GROUP	REIMBURSABLE EXPENSES	
Schematic Design								
Prepare schematic site and floor plans, incorporate HVAC shafts, layout accessible restrooms and showers, reviews and revisions with the County stakeholders	9,500							
Prepare schematic utility and drainage plans		8,500						
New service coordination with PG&E if required			3,500					
Utility exploration services		1,900						
Topographic survey of selected areas		3,300						
Cost Estimate at 50% progress	240					2,400		
Total	9,740	13,700	3,500	---	---	2,400		29,340
Construction Documents								
Prepare construction documents for building and site systems including 50% county progress review and cost estimate at 95%	25,240	20,850	5,400	2,900	1,500	1,800		57,690
Plan Check Submittal & Response								
Respond to plan check comments	3,500	incl	incl	incl	incl	---		3,500
Bidding								
Attend pre-bid walk and respond to bidders questions	1,500	incl	incl	incl	incl	---		1,500
Construction Administration								
Provide construction administration services	22,000	6,200	1,000	600	1,500	---		31,300
Reimbursable Expenses								
Printing & Mileage Allowance							1,500	0
Total								
Total all phases	61,980	40,750	9,900	3,500	3,000	4,200	1,500	124,830
Exclusions								
Boundary Survey								
SWPPP								
Title Reports								

Yolo County Modular Crisis Now Building Project

8/27/2024

moniz ARCHITECTURE	ARCH	CIVIL	ELEC	MECH	STRUCT	COST EST	REIMB	TOTAL
	MONIZ ARCHITECTURE	CUNNINGHAM ENGINEERING	CAPITAL CITY DESIGN	TURLEY ASSOCIATES	BUHLER	SIERRA WEST GROUP	REIMBURSABLE EXPENSES	
Soils investigation and testing								
Materials testing or special inspections								
Easement dedication								
Hazardous materials testing, identification or remediation								
Construction staking								
Natural gas system design								
Agency, review and permit fees								
Water quality								
Potholing to locate or determine depth of size of utilities								
Air quality impact analysis								
Site lighting other than building-mounted lighting								
Traffic control plan								
Landscape and irrigation design								
Emergency generator system design								
Accessibility improvements other than parking for this building and access to this building								
Preparation of design-review or planning entitlement applications								
Environmental reports or studies								
LEED design								
Arborist services								
Design of connection to off-site utilities								
Surveying outside of the limits shown on the included exhibit								

EXHIBIT B



CRISIS NOW LOCATION
7/19/2024

2780 E. Gibson Rd
Woodland, CA

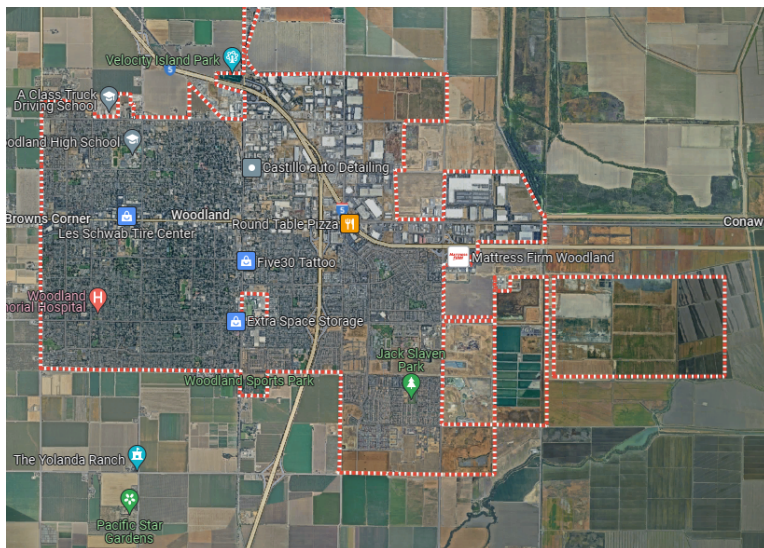


EXHIBIT B



VERIFY COMPLIANT PATH OF TRAVEL TO THE PUBLIC RIGHT OF WAY

NEW ACCESS RAMP AND FLATWORK

NEW VAN AND STANDARD ACCESSIBLE PARKING

NEW 60' X 60' MODULAR BUILDING

EXISTING MODULAR BUILDING

POSSIBLY PULL ELECTRICAL FROM EXISTING BUILDING OR TRANSFORMER TO THE NORTH

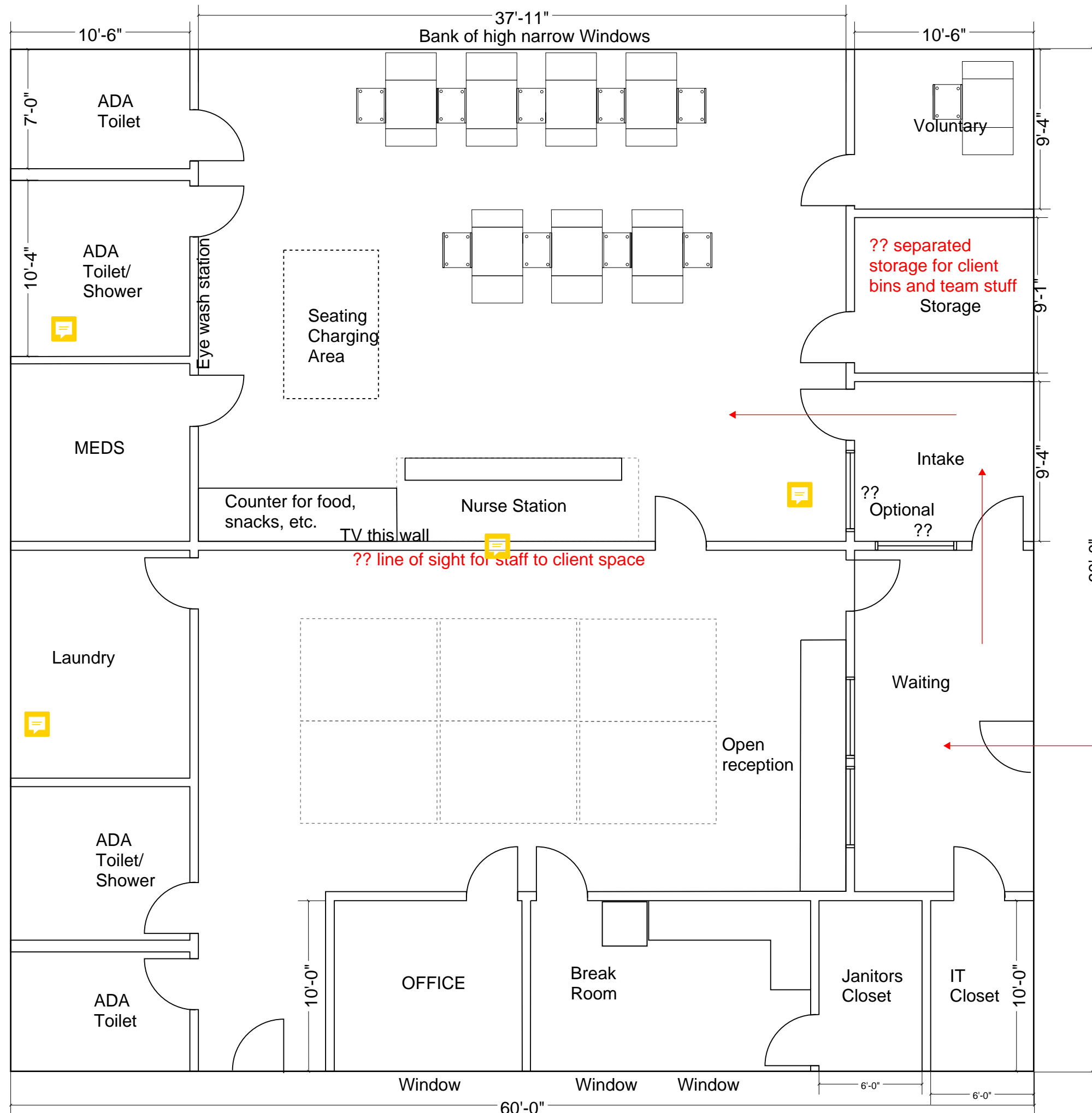
DON'T KNOW WHERE WATER OR FIRE WATER ARE, BUT POSSIBLY TIE-IN ON-SITE SEWER

CRISIS NOW CONCEPT DIAGRAM 7/19/2024

PAGE 2 OF 2

EXHIBIT B

FLOOR PLAN DIAGRAM PREPARED BY YOLO COUNTY



- Do we need anti ligature for both restrooms or just the shower? Both restrooms as well
- Laundry – code might require us to have a dirty and clean storage for laundry. The additional space accounts for it. Thanks, that was my recollection as well
- TV – we can add both outlets on each end of the wall/ceiling where for future options
- Line of sight – will work with the architect for options.
- Door between Intake and Storage. We'll look into it. having too many doors in the intake room might limit our options as doors clearances would restrict our options.
- Table charging capacity. It might be good to add a floor receptacle under the table so that you have the option down the road. but if we definitely don't need it then we'll have it removed. I agree re: the floor receptacle.