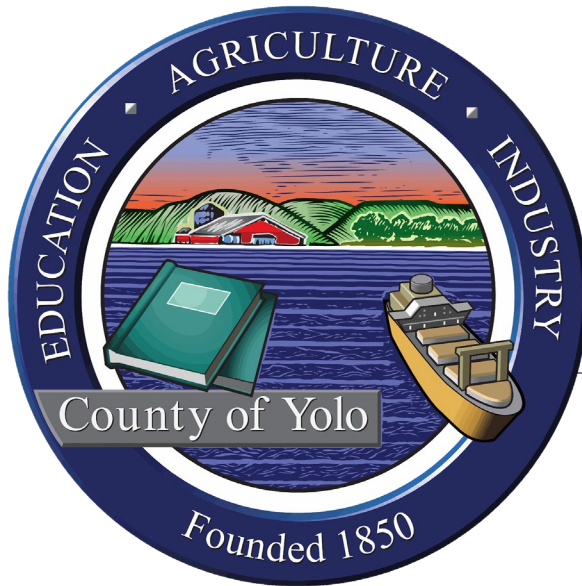


Yolo County Maternal Child & Adolescent Health Advisory Board



2023-24 Annual Report

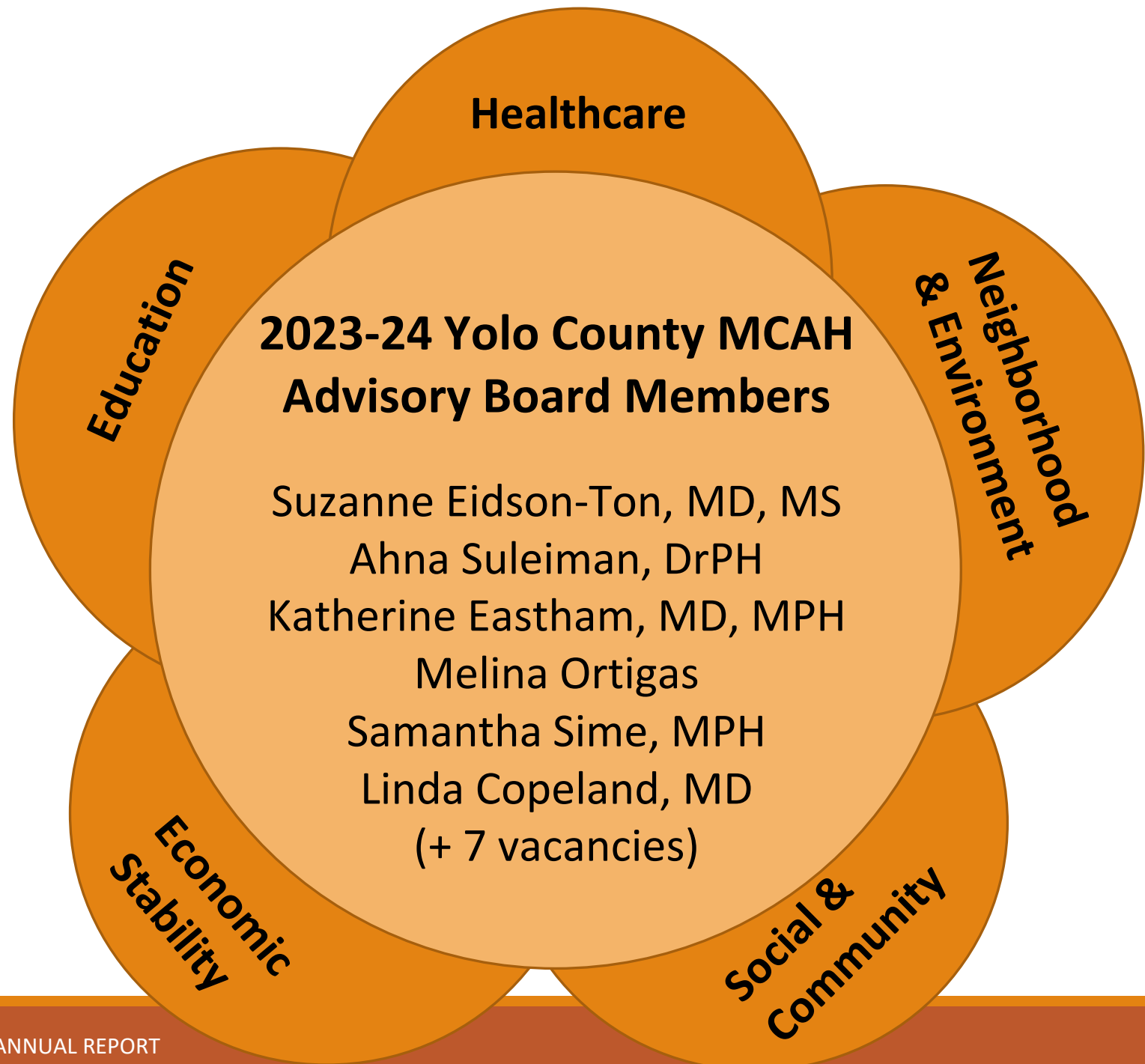
BOARD OF SUPERVISORS MEETING - OCTOBER 22, 2024

PRESENTER: SUZANNE EIDSON-TON, MD, MS

MCAH ADVISORY BOARD CHAIR

Yolo County MCAH Advisory Board Mission Statement:

To proactively work to preserve, promote and enhance health and support systems for Yolo County women, children, adolescents and their families.



Yolo County MCAH Advisory Board Partners & Stakeholders



SACRAMENTO STATE



CommuniCare+OLE



Yolo County OFFICE OF EDUCATION



LEGAL SERVICES of NORTHERN CALIFORNIA



ALL LEADERS MUST SERVE JOB READINESS AGE 15-25

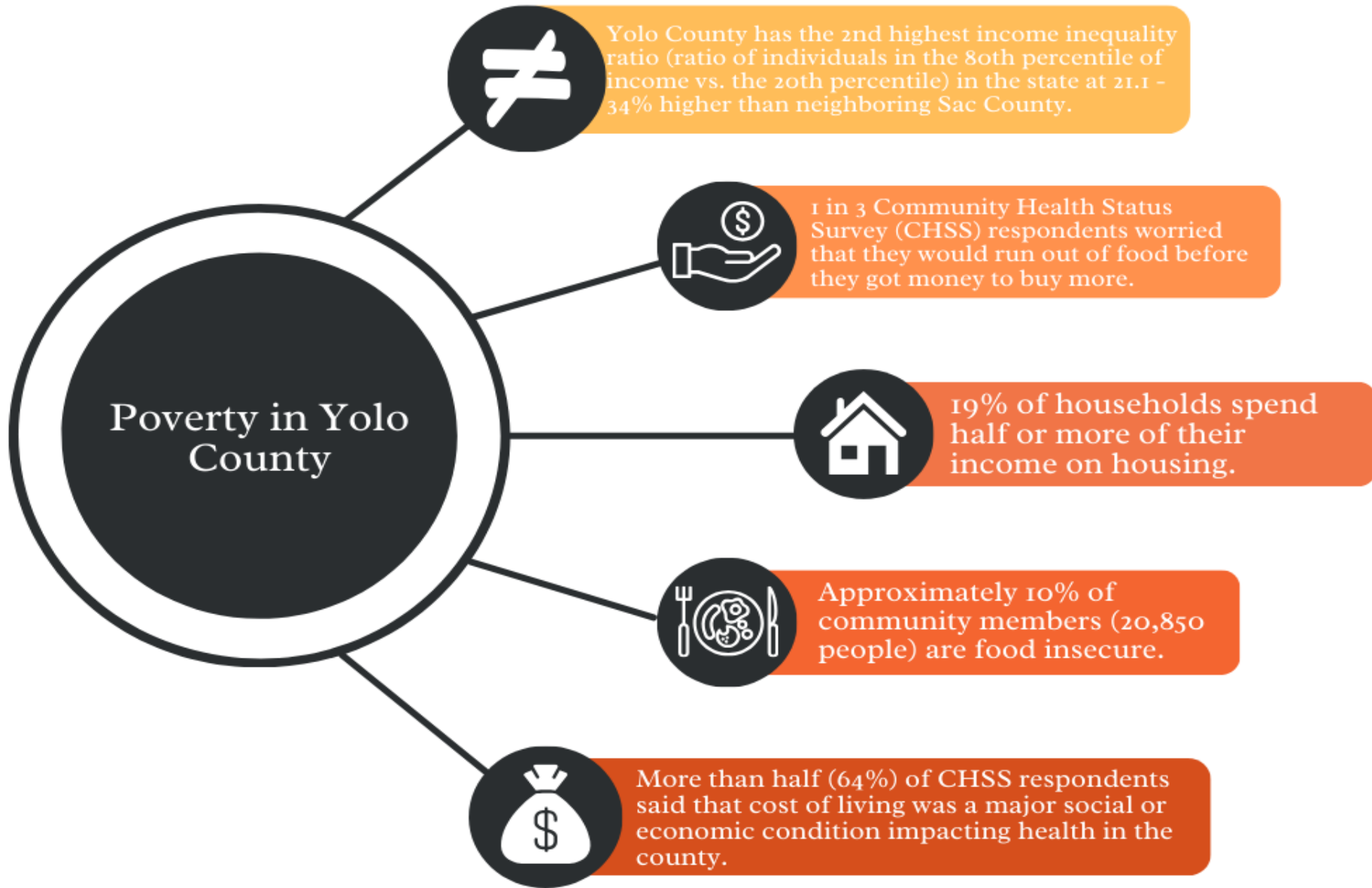
Yolo County MCAH Advisory Board 2023-24 Presentations & Focus Areas

2023 Presentations to MCAH Advisory Board & Hot Topics

Yolo County Child Abuse Prevention Council (CAPC)	MCAH County Data Presentation
Yolo Basic Income Program	Yolo County MCAH Title V Needs Assessment
Yolo County HHS Mental Health Services Act Listening Session	Yolo County Youth Mental Health Data
Yolo County Community Health Improvement Plan (CHIP)	Healthy Yolo Presentation
Yolo County WIC Services & Breastfeeding Data	Alta California Regional Center's Early Start Program
Yolo County Primary Prevention & Syphilis Response Plan	Yolo County District Attorney's Youth Programming

The MCAH Advisory Board highlighted strengths and opportunities for each domain area:

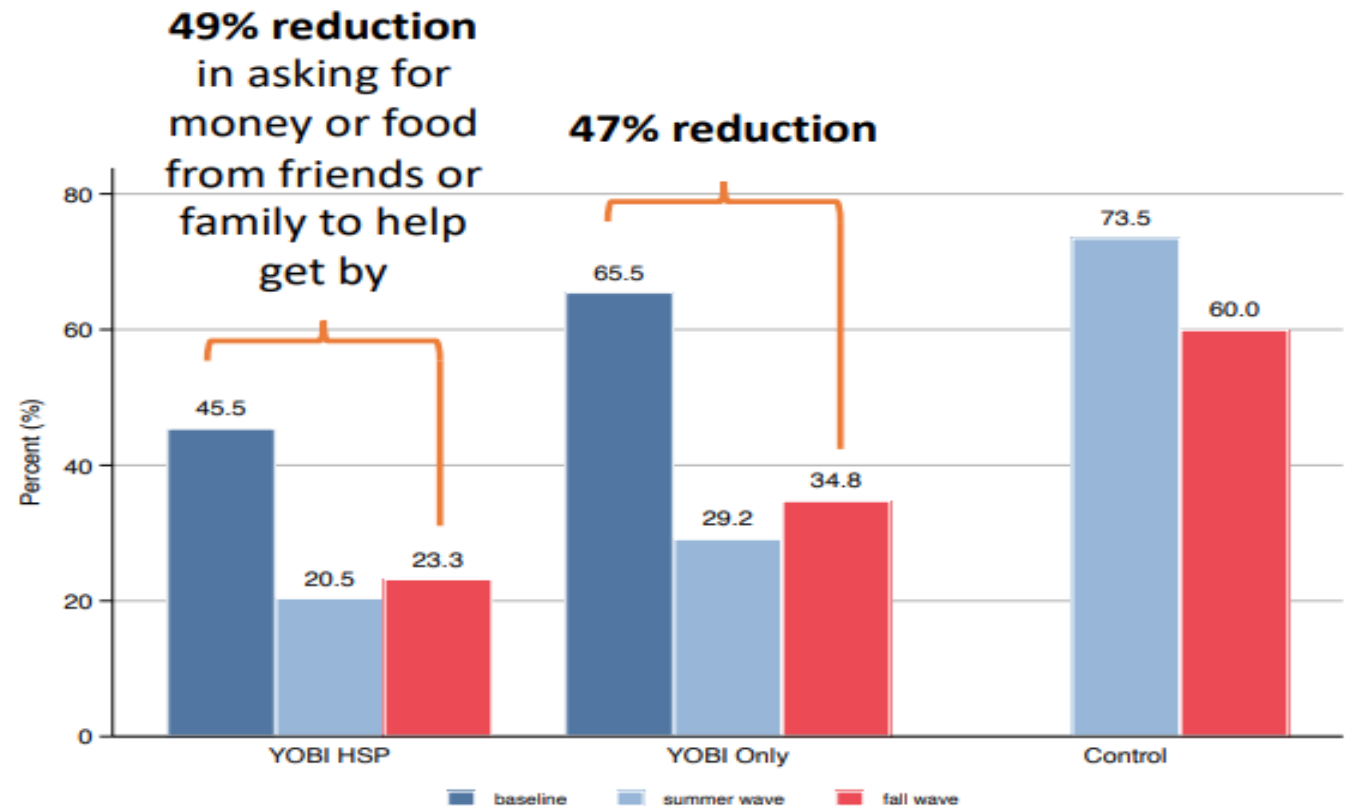
- Women and Maternal/Birthing People
 - Perinatal and Infancy
 - Children
- Children and Youth with Special Health Care Needs
 - Adolescent



Yolo County Basic Income (YOBI) Data

Material Needs

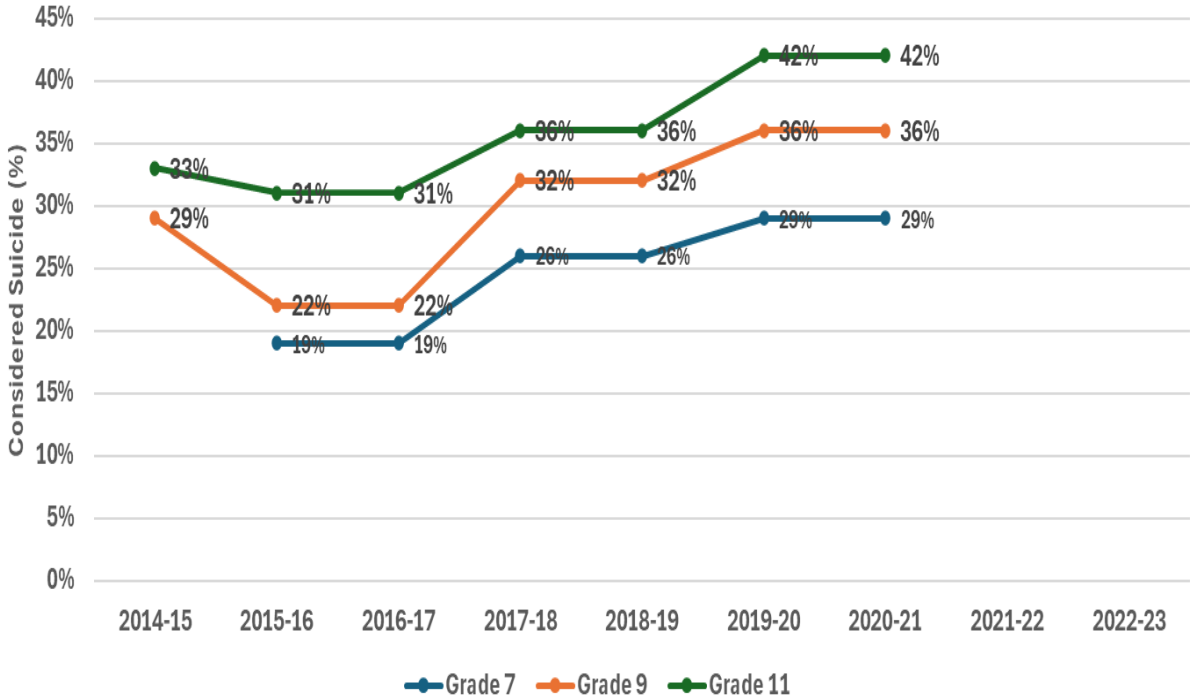
- Individual scale items showed improvements in YOBI families' ability to pay for material needs such as housing, clothing, and food, particularly for YOBI+HSP families.
 - However, these changes were not statistically different from changes in the control group over the same time period.
- The proportion of YOBI families showing greater financial independence nearly doubled.
- Missingness in response items for the Unmet Material Needs scale resulted in a small sample size and unreliable estimates (not shown).



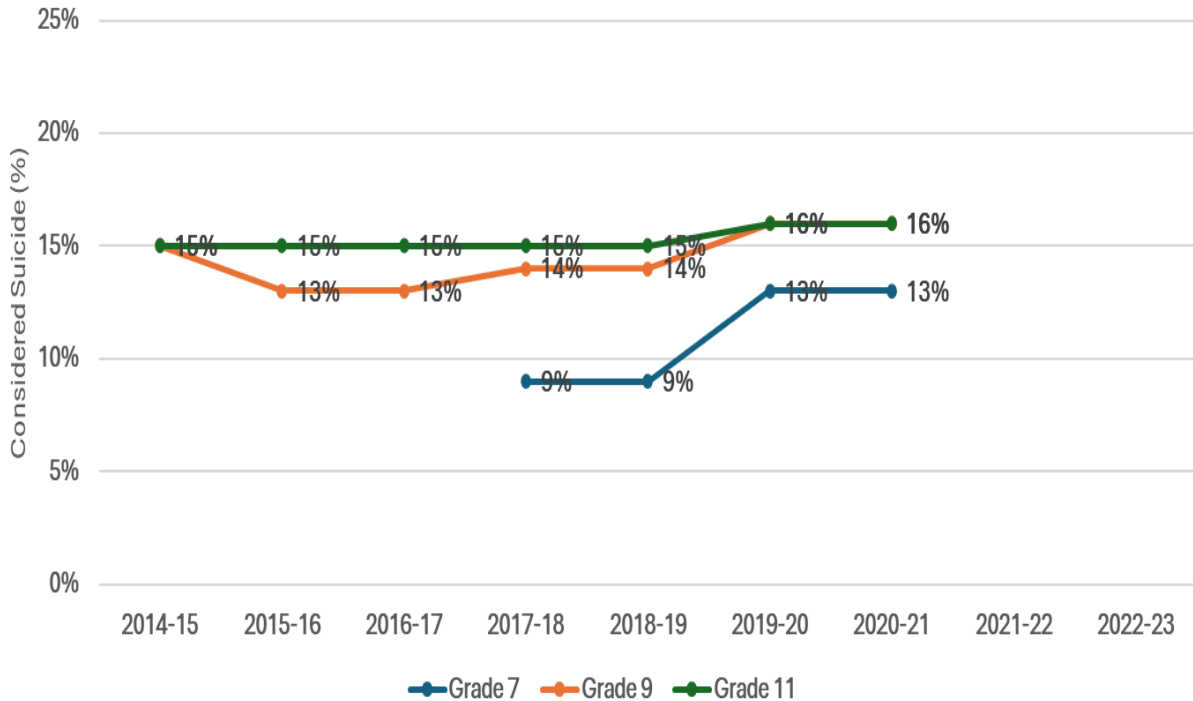
Control families interviewed in the spring are shown in the summer column due to small numbers.

Adolescent Mental Health

Chronic Sadness in Yolo County



Considered Suicide in Yolo County



Childcare & Early Education

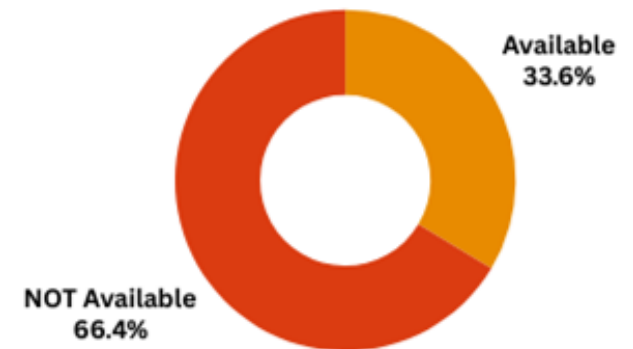
Healthy People 2030 Goal:

Increase the proportion of young children who participate in high quality early childhood education programs.



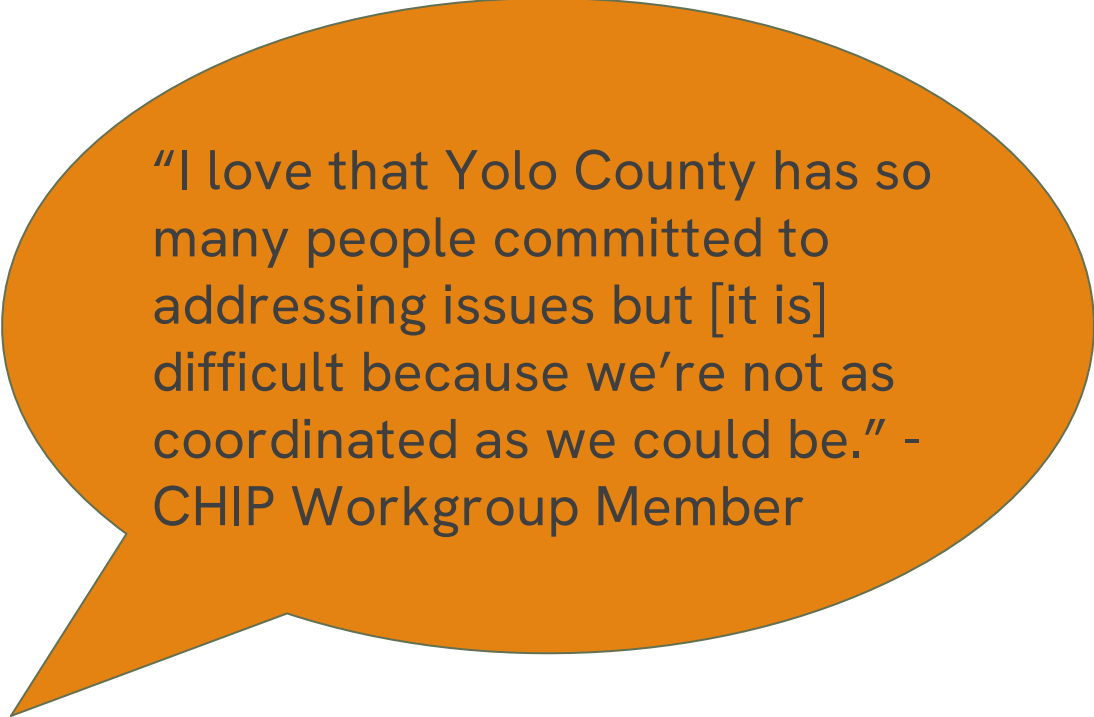
The average Yolo County household spends 32% of its income on childcare (for 2 children).

Availability of Child Care for Working Families in Yolo County



211 Utilization

- In 2023, 2-1-1 Yolo received approximately 8,400 calls from community members asking to be connected to services.
- The vast majority of these were requests for basic needs (~4750)
 - Most requested referrals were for **Housing and Shelter Assistance, Utilities Assistance, and Food Assistance**
- Additionally, there were a high number of requests for:
 - **Family Support Services**
 - **Mental Health Services**
 - **Income Supports**
 - **Tax Services**
 - **Legal Services**



"I love that Yolo County has so many people committed to addressing issues but [it is] difficult because we're not as coordinated as we could be." - CHIP Workgroup Member

MCAH ADVISORY BOARD KEY FINDINGS & RECOMMENDATIONS

1

POVERTY

This continues to be a significant driver of poor outcomes for families and children in Yolo County.

Recommendation:

Continue to support poverty prevention and alleviation programs.

2

MENTAL HEALTH

This has become increasingly impacted for adolescents and their families throughout the COVID pandemic and beyond.

Recommendation:

Increase access to behavioral health services for adolescents and their families.

3

CHILDCARE

Childcare and early education services for children in the first 5 years of life is foundational for establishing healthy and stable families and future citizens of the County.

Recommendation:

Expand affordable childcare and early education programs.

4

INTERAGENCY REFERRALS & COORDINATION

This is quite a challenge for effectively servicing our population.

Recommendation:

Provide support to enhance and expand 211 to enable interagency closed-loop and self-referrals.