

# 500 JEFFERSON (BLDG. A) W. SAC, CA ROOF PROJECT

COUNTY OF YOLO



## Administration

---

JASON EISENHART  
Facilities Superintendent

TONIA MURPHY  
Fiscal Administrative Officer

RYAN PISTOCHINI  
Director General Services

CHRIS RICE  
Capital Projects Division Manager







CLIENT COUNTY OF YOLO

PROJECT NUMBER 240264

DATE 09/27/2024

DRAWN BY CFH/HN

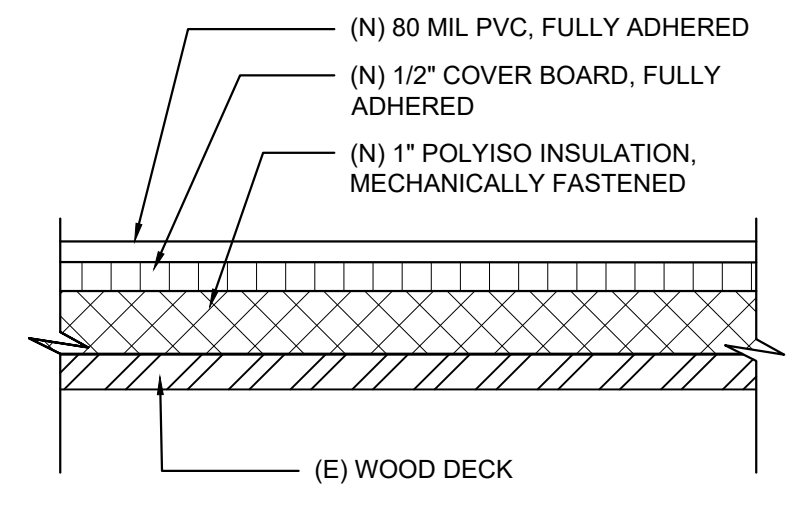
CHECKED BY HML/LH

REVISIONS		
No.	DESCRIPTION	DATE

ISSUE FOR BID

ROOF PLAN

**A-1**



**A**

**NEW NOMENCLATURE**  
NOT TO SCALE

AREA	APPROX. SQ. FT.	EXISTING NOMENCLATURE	NEW NOMENCLATURE	REMARKS
A1	29,600	WD/ 1/2" PB/ BUR/ AC	A	-
A2	-	NIC	NIC	-
A3	-	NIC	NIC	-
TOTAL	29,600			

NOTE: SQUARE FOOTAGE'S SHOWN ARE FOR REFERENCE ONLY - (FIELD VERIFY) CONTRACTOR IS RESPONSIBLE FOR VERIFYING EXISTING CONDITIONS AND FOR ENSURING NEW CONDITIONS ADHERE TO ALL LOCAL AND FEDERAL CODES ALONG WITH INDUSTRY STANDARD GUIDELINES AND REMAIN IN A WATERTIGHT CONDITION.

**ABBREVIATIONS:**

- PB: PERLITE BOARD
- BUR: MULTI-PLY COAL TAR BUILT-UP ROOF SYSTEM
- AC: ACRYLIC COATING
- WD: WOOD DECK
- MTLD: METAL DECK
- NIC: NOT IN CONTRACT

**REMARKS:**

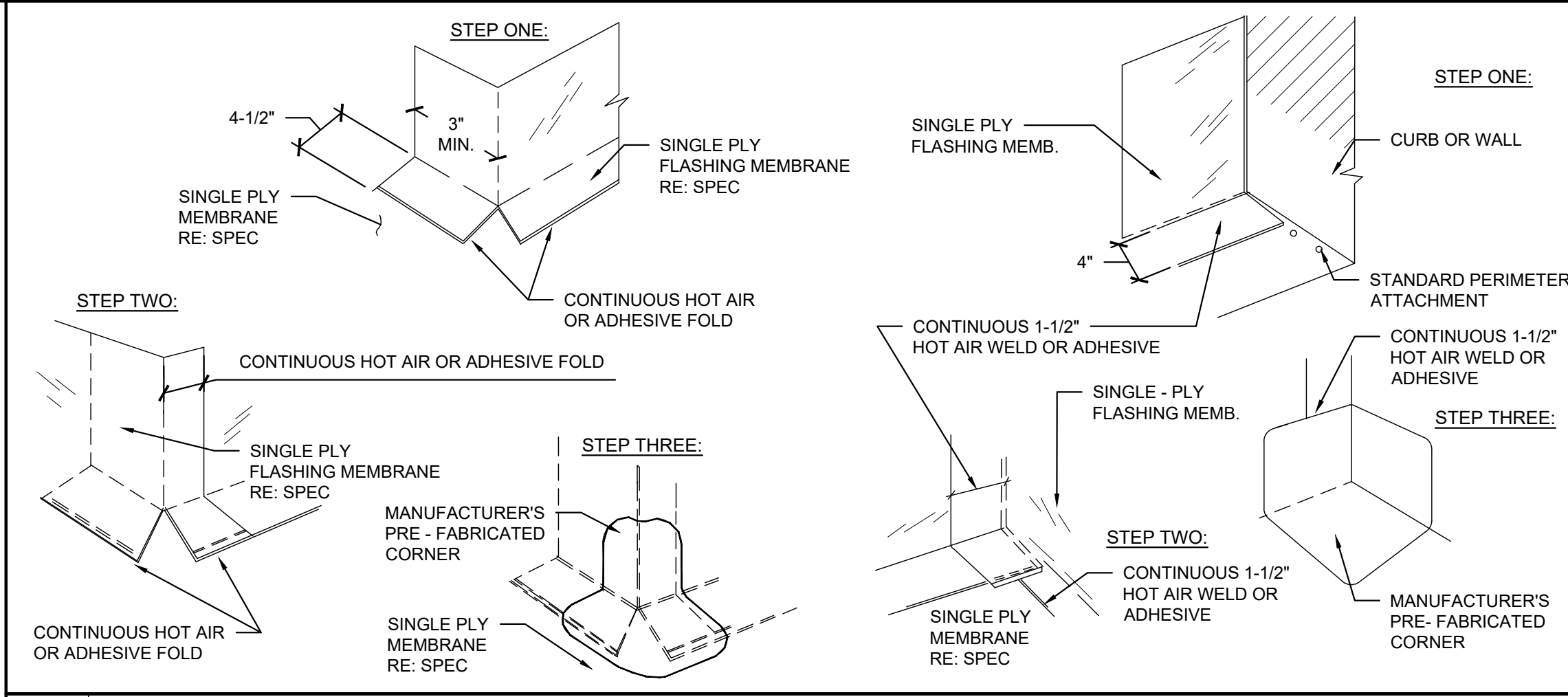
**ROOF AREA INFORMATION**

- 1 INSTALL NEW LIQUID FLASHING AT LOW PLUMBING VENTS (RE: 12/A-2)
- 2 (E) PLYWOOD CRICKETS. PROTECT IN PLACE AND ROOF IN. REPLACE IN-KIND AS NECESSARY FOR DRY ROT.
- 3 (E) ROOF HOIST, ATTACHMENT AT THE EDGE OF THE ROOF. PROTECT IN PLACE AND ROOF IN.
- 4 (E) WATER SPIGOT. PROTECT IN PLACE AND ROOF IN.
- 5 4" (ALTERNATE #1) WELDED PVC SAFETY STRIP AT 5' FROM THE ROOF PERIMETER WHERE THERE IS NO OR LOW PARAPET LESS THAN 2-FT TALL.
- 6 EXISTING ROOF DRAIN. CONTRACTOR TO CONFIRM DRAIN LINES ARE INSULATED TO ELIMINATE CONDENSATION
- 7 APPLY LIQUID FLASHING AT ANY PARAPET PORTION THAT IS LESS THAN OR EQUAL TO 4" IN HEIGHT
- 8 (N) SLIDING ROOF HATCH (PS ACCESS SOLUTIONS - 'SLIDEWISE') PER SPECIFICATION

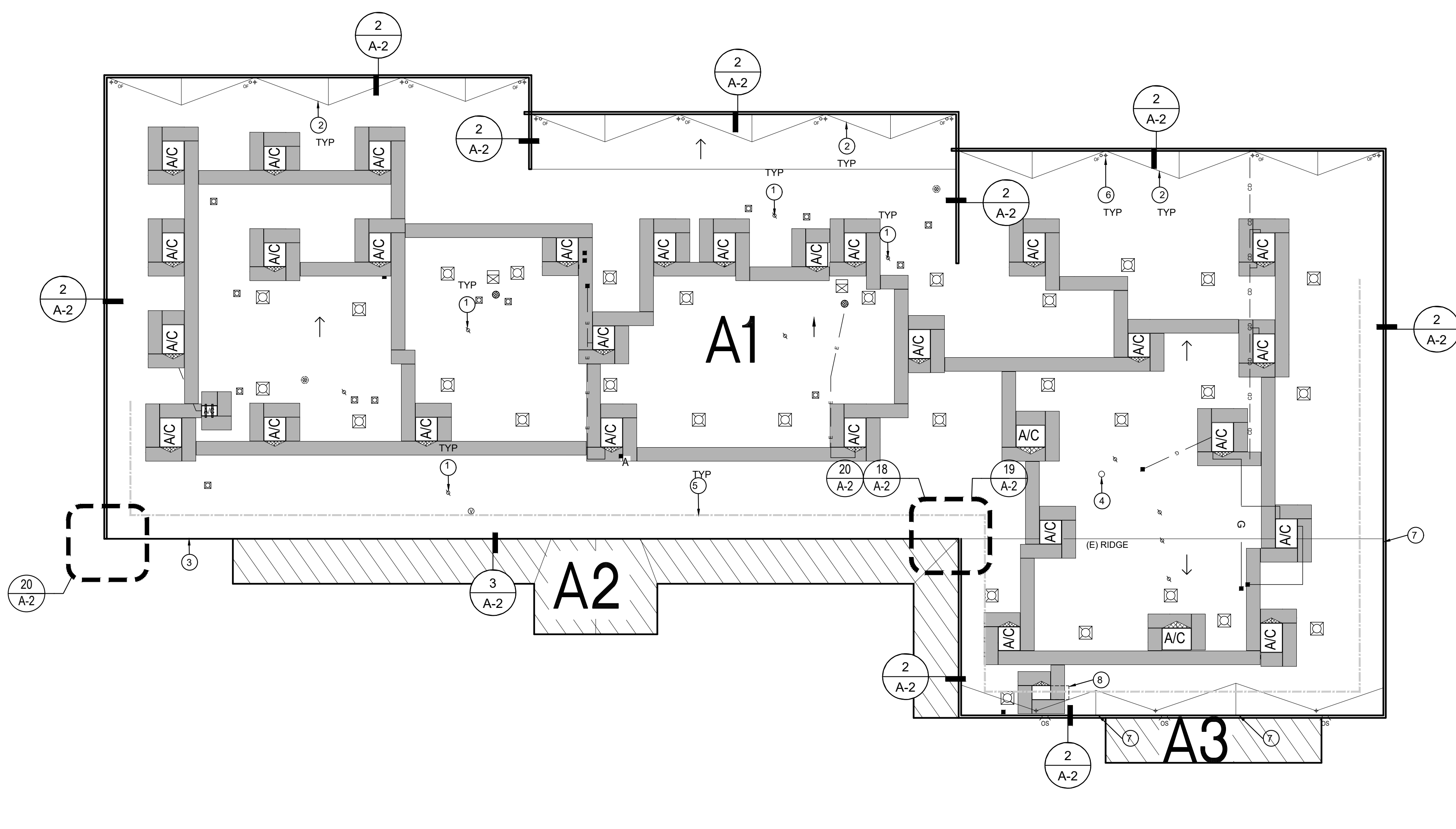
**KEYED NOTES**

⊘ PLUMBING VENT (RE:11/A-2)	⊠ GOOSE NECK VENT
⊙ FLANGE VENT	⊠ CURB MOUNTED A/C (RE:10/A-2)
■ PITCH PAN (RE:12/A-2)	⊠ SPLASH BLOCK
⊕ EXIST. ROOF DRAIN (RE:6/A-2)	⊠ A/C ON POSTS (RE:8/A-2)
⊖ OVERFLOW DRAIN (RE:5/A-2)	⊠ ROOF HATCH (RE:16/A-2)
⊠ CURB MOUNTED VENT (RE:10/A-2)	⊠ OVERFLOW SCUPPER (RE:4/A-2)
⊠ ABANDONED CURB TO BE REMOVED/PATCHED	■ WALK PAD (RE:15/A-2)
⊙ POWER VENT (RE:9/A-2)	⊠ TAPERED INSULATION
⊙ BOILER VENT (RE:9/A-2)	⊠ EXISTING / N.I.C.
— (E) RIDGE LINE	⊠ ROOF AREA
— GAS LINE (RE:14/A-2)	— SLOPE INDICATOR
— ELEC. LINE (RE:14/A-2)	
— COND. LINE	
--- EXTENTS OF WORK	

**ROOF SYMBOL LEGEND**

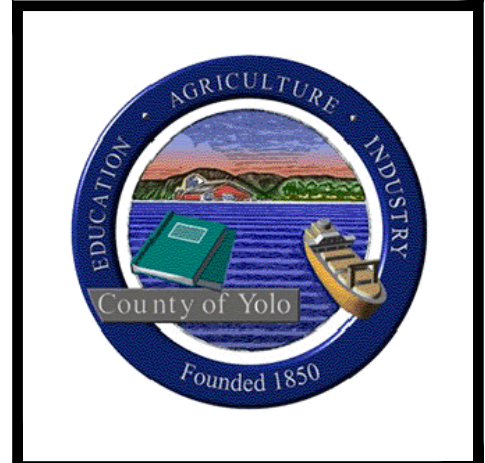


**1 GENERAL**  
NOT TO SCALE

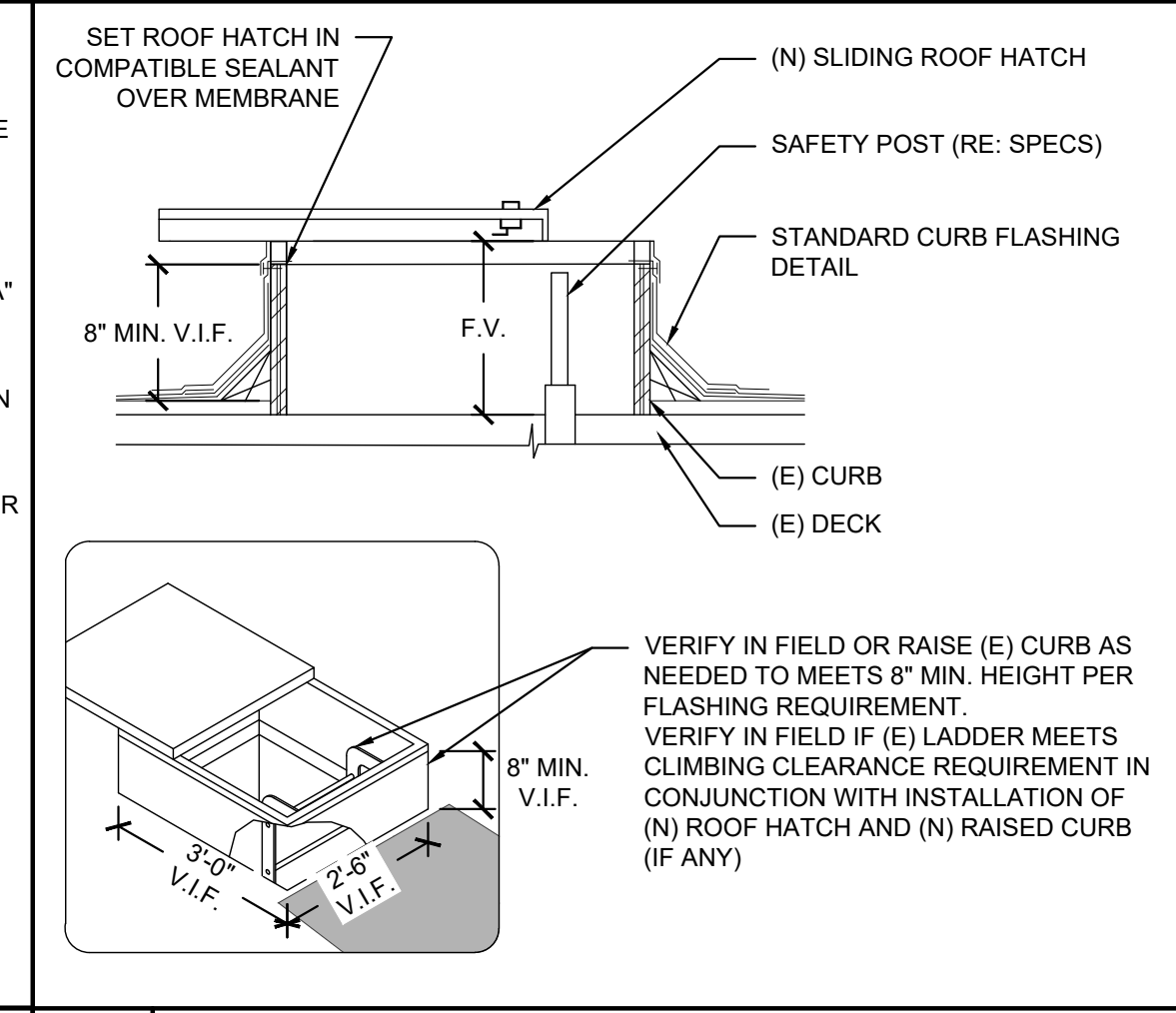


**1 ROOF PLAN**  
SCALE: 7/8" = 1'-0"

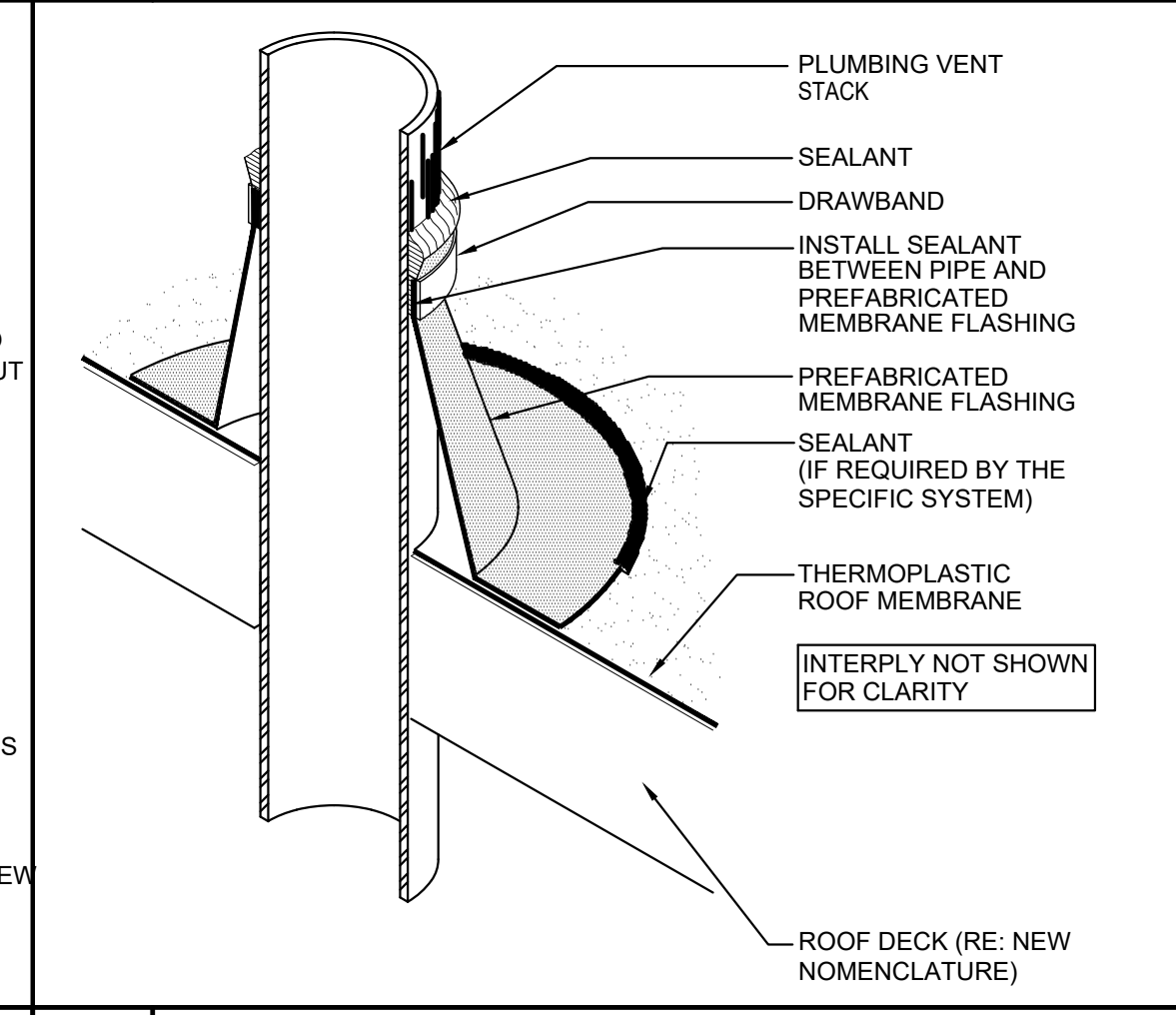
**ROOF SYMBOL LEGEND**



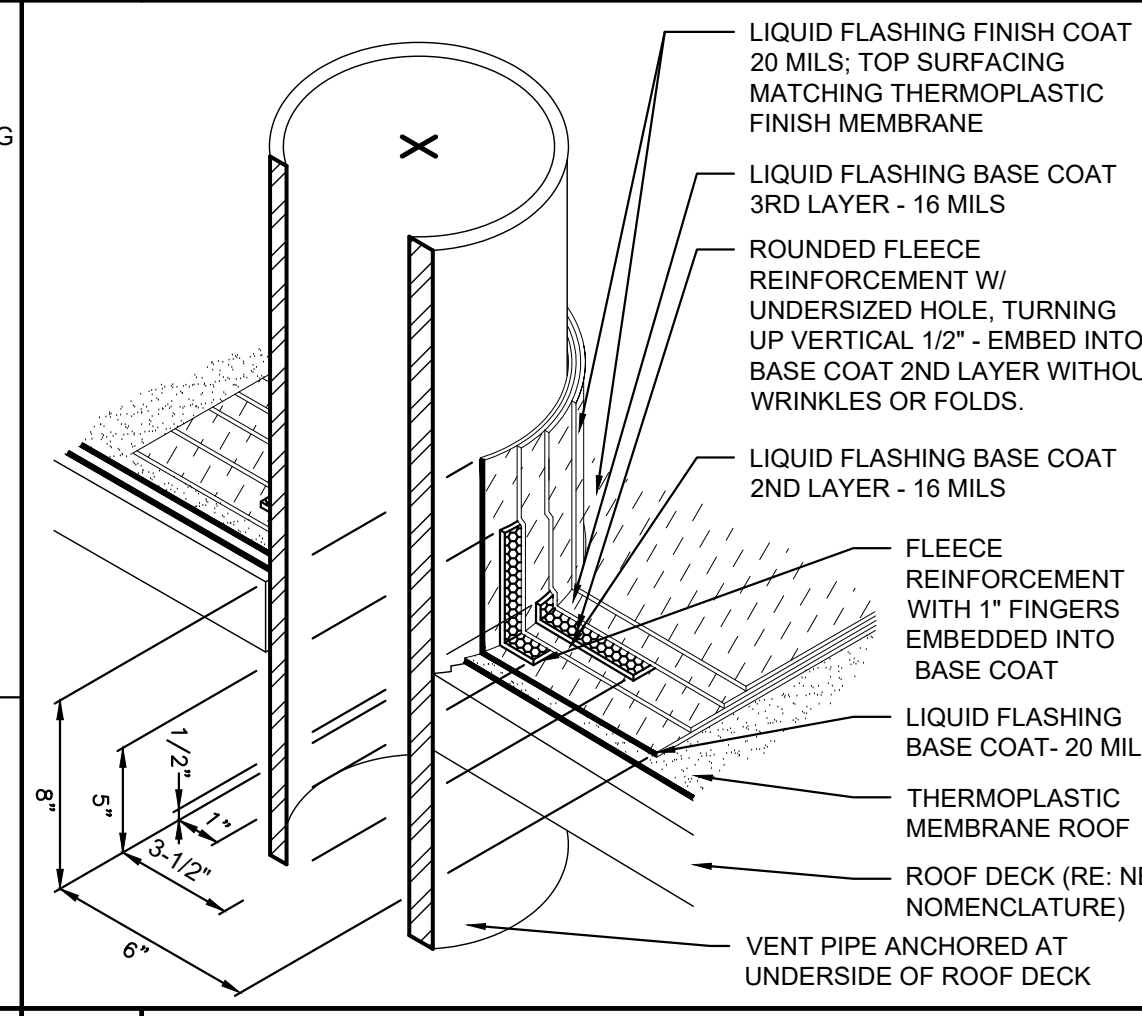
CLIENT	COUNTY OF YOLO	
PROJECT NUMBER	240264	
DATE	09/27/2024	
DRAWN BY	CFH/HN	
CHECKED BY	HML/H	
REVISIONS		
No.	DESCRIPTION	DATE
ISSUE FOR BID		
ROOFING DETAILS		



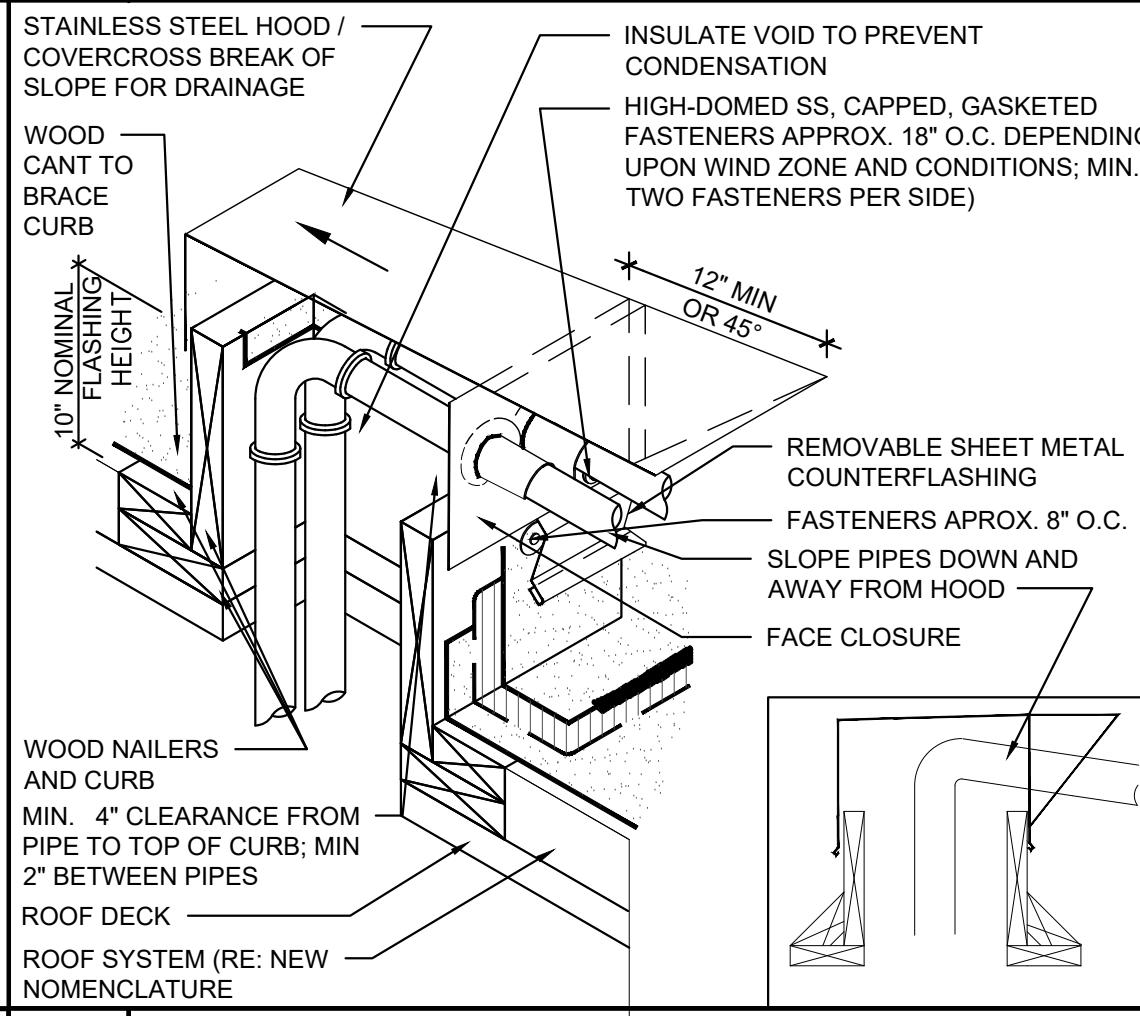
**16 ROOF HATCH & SAFETY POST**  
NOT TO SCALE



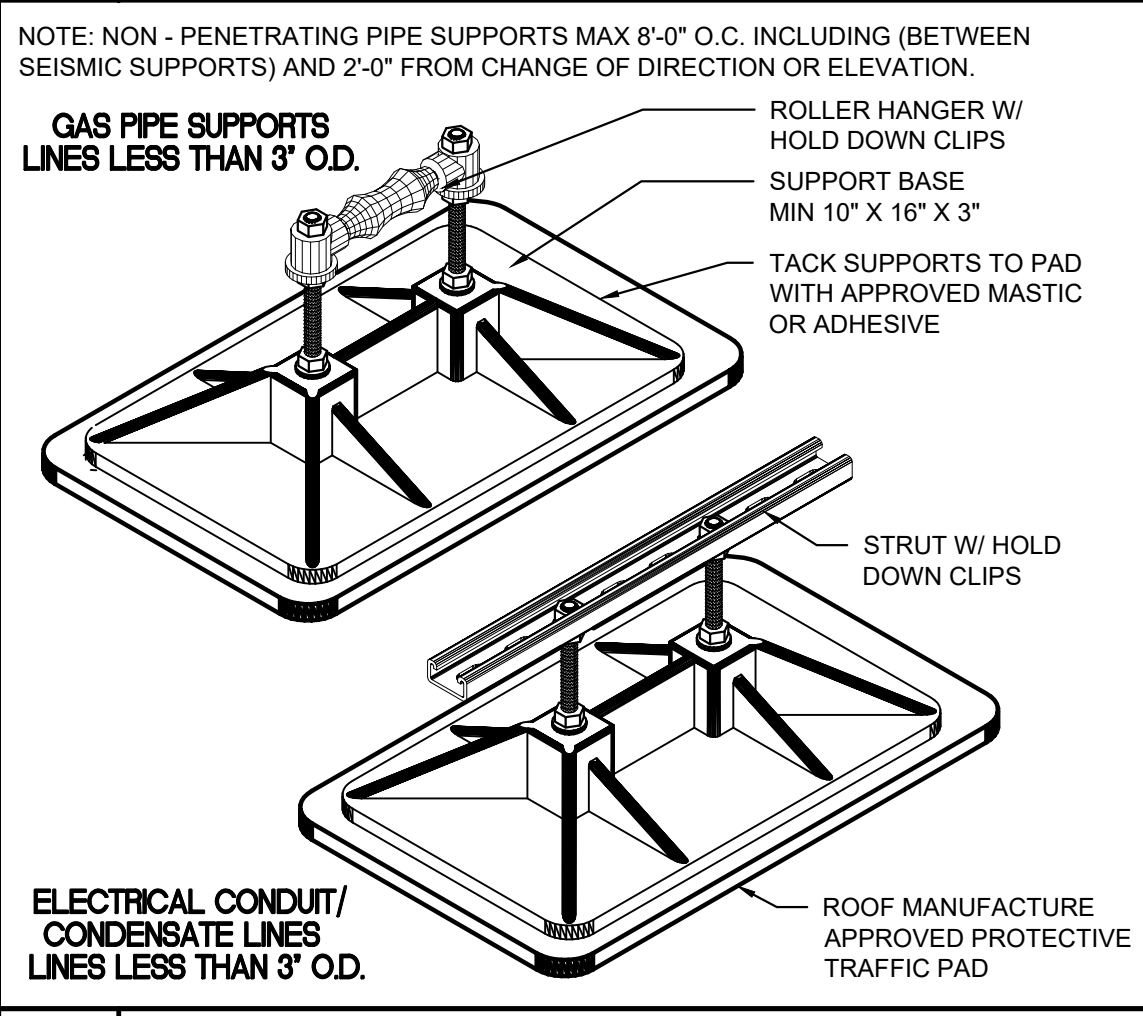
**17 MEMBRANE LAP**  
NOT TO SCALE



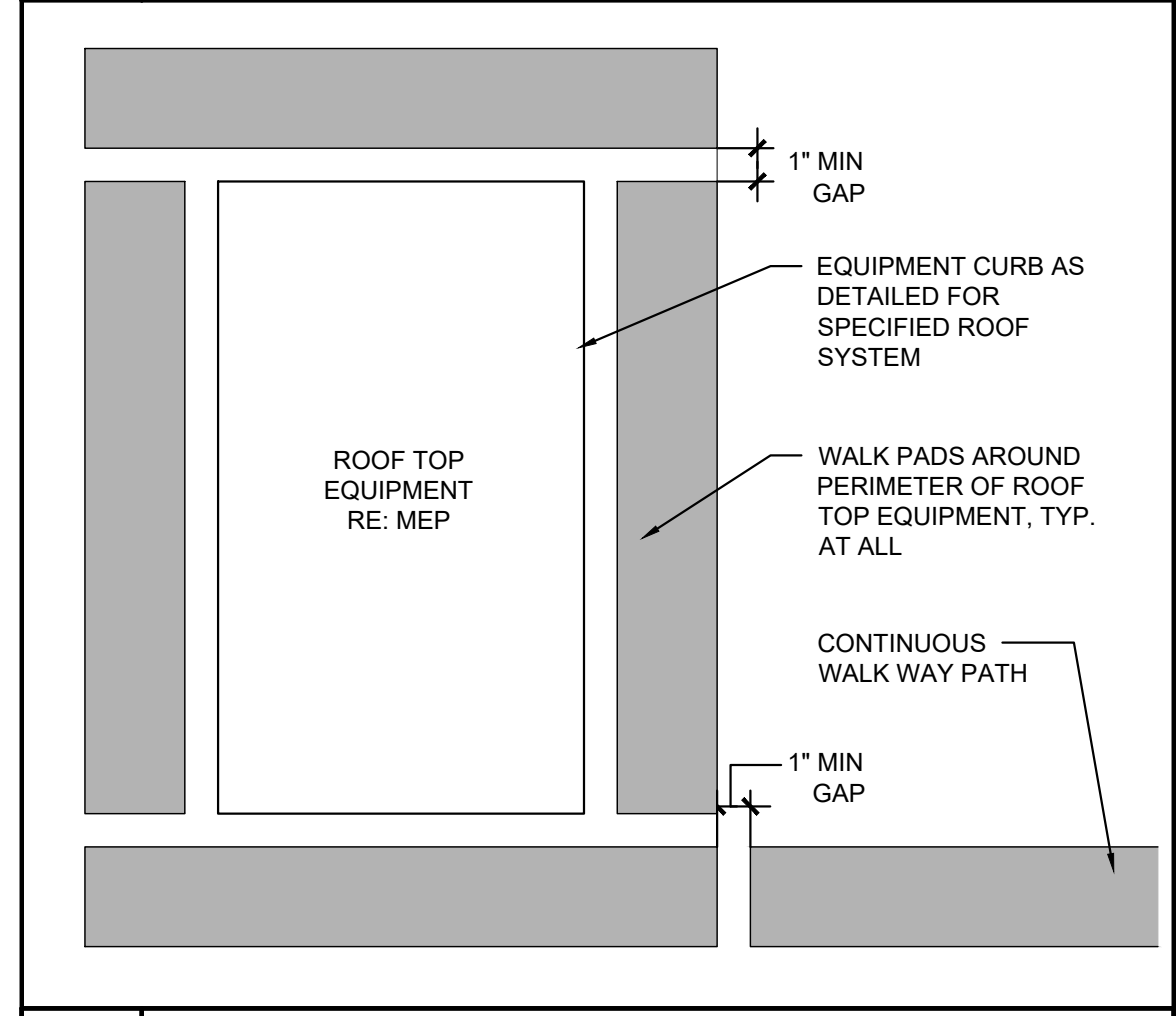
**18 PARAPET TO PERIMETER EDGE**  
NOT TO SCALE



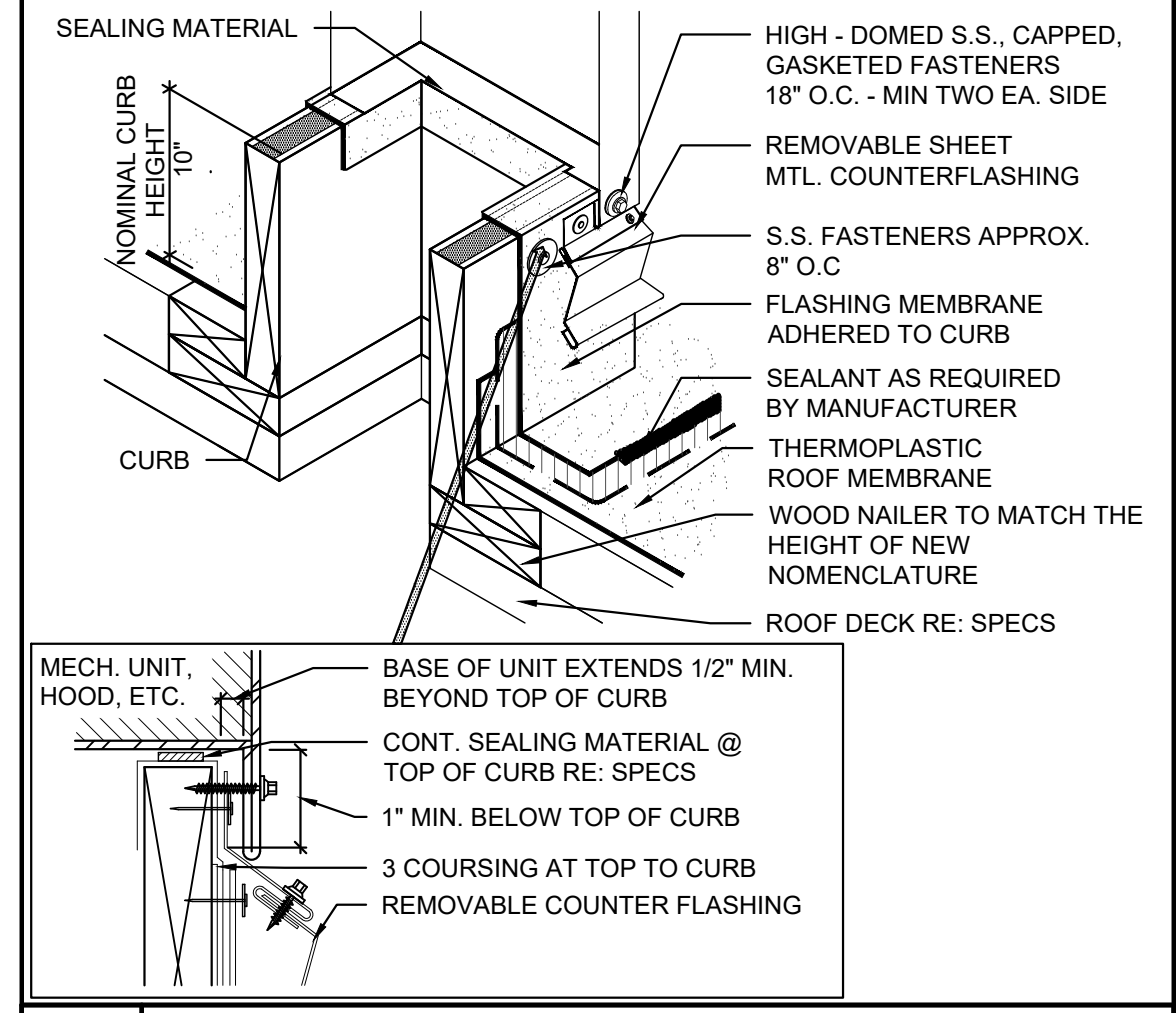
**19 PARAPET FLASHING**  
NOT TO SCALE



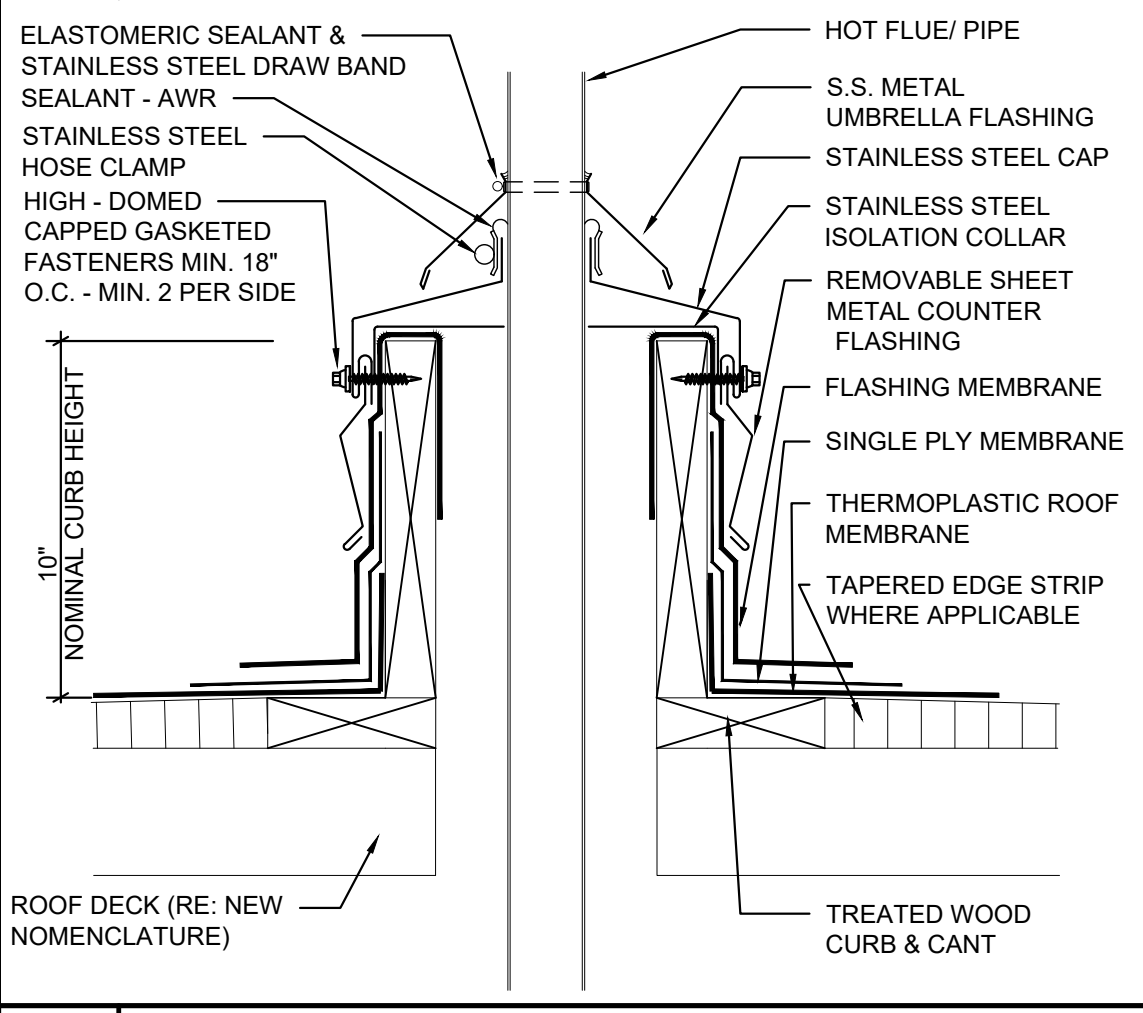
**20 EDGE TO PARAPET FLASHING**  
NOT TO SCALE



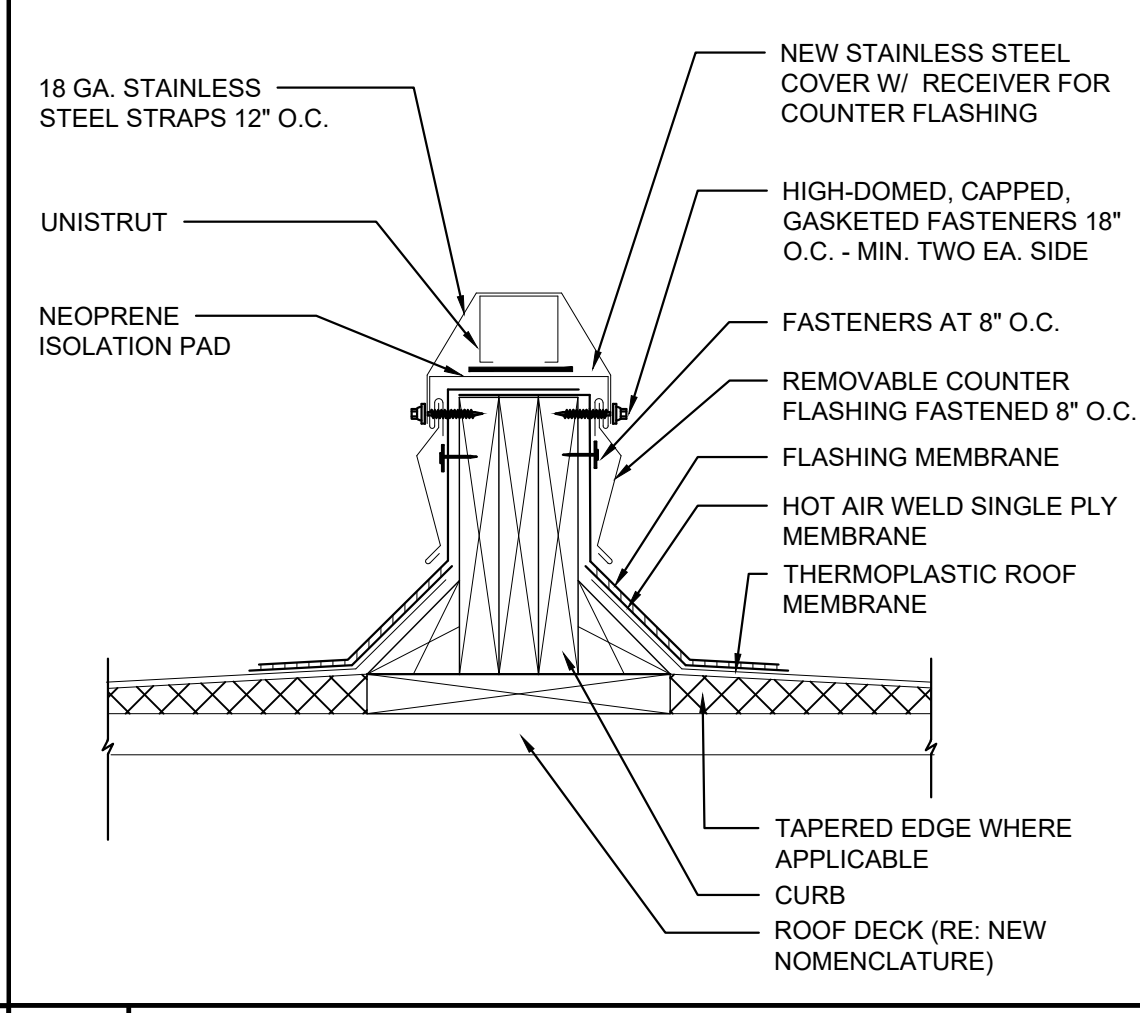
**15 WALK PADS**  
NOT TO SCALE



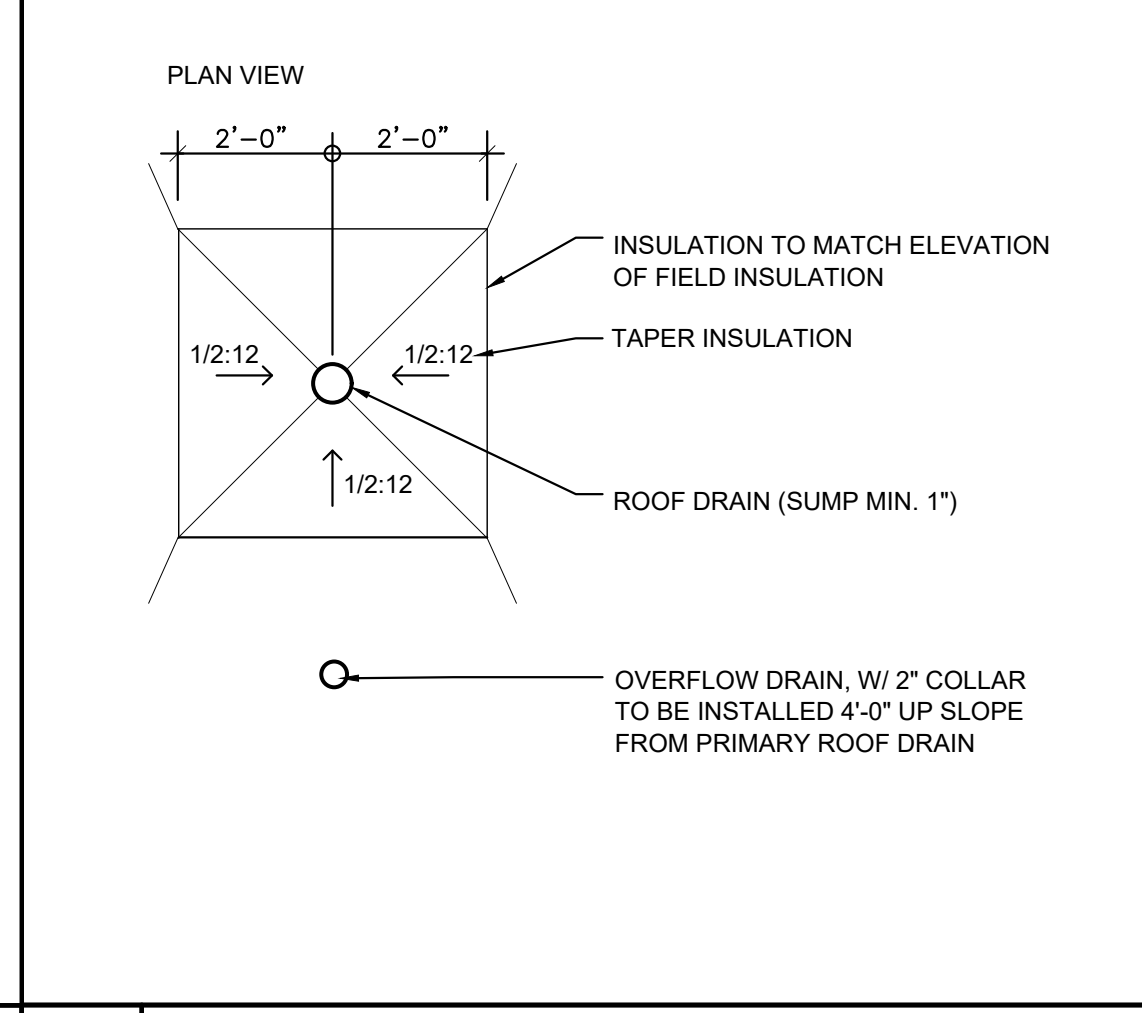
**14 PIPE SUPPORTS**  
NOT TO SCALE



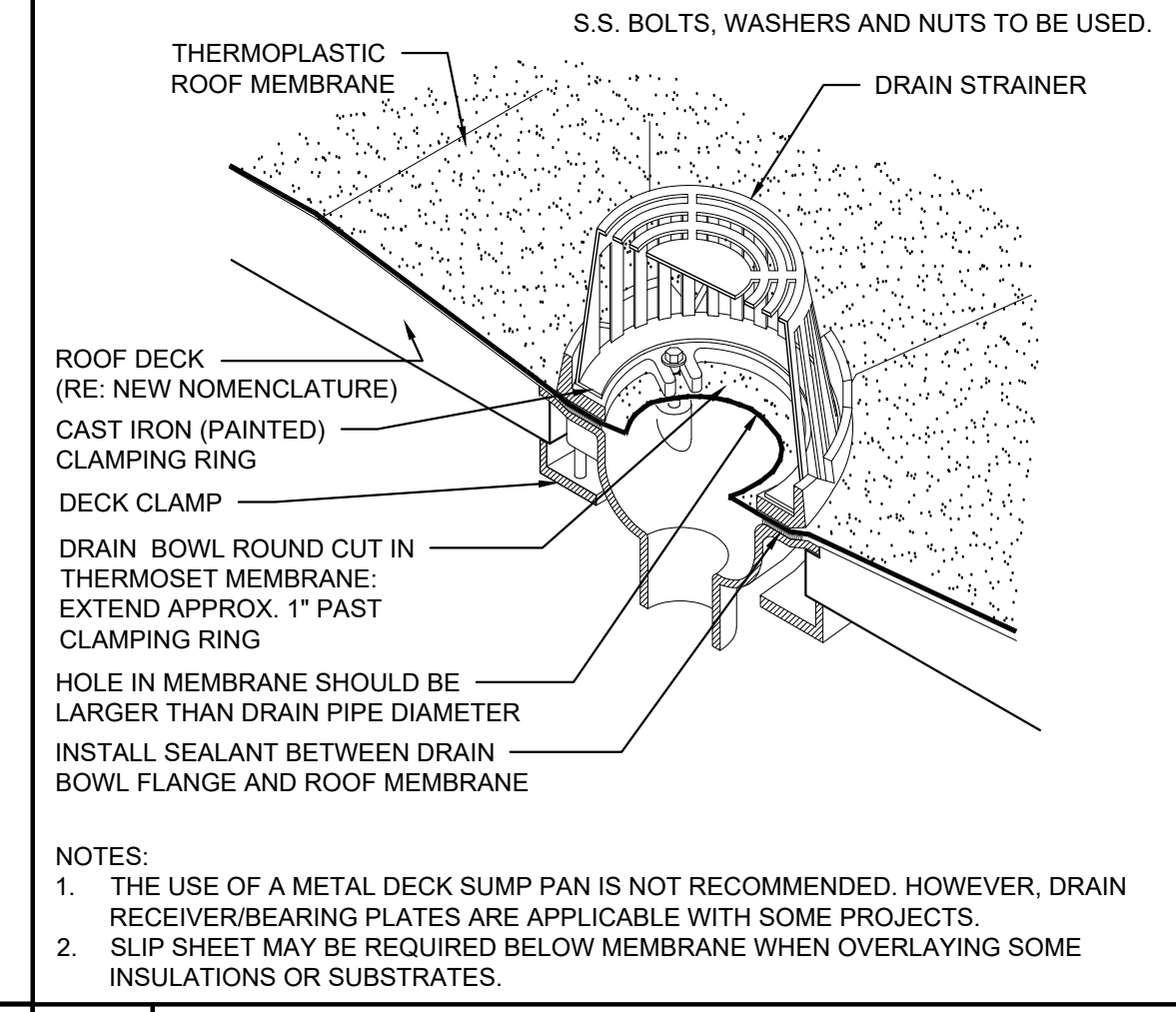
**13 HOODED CURB**  
NOT TO SCALE



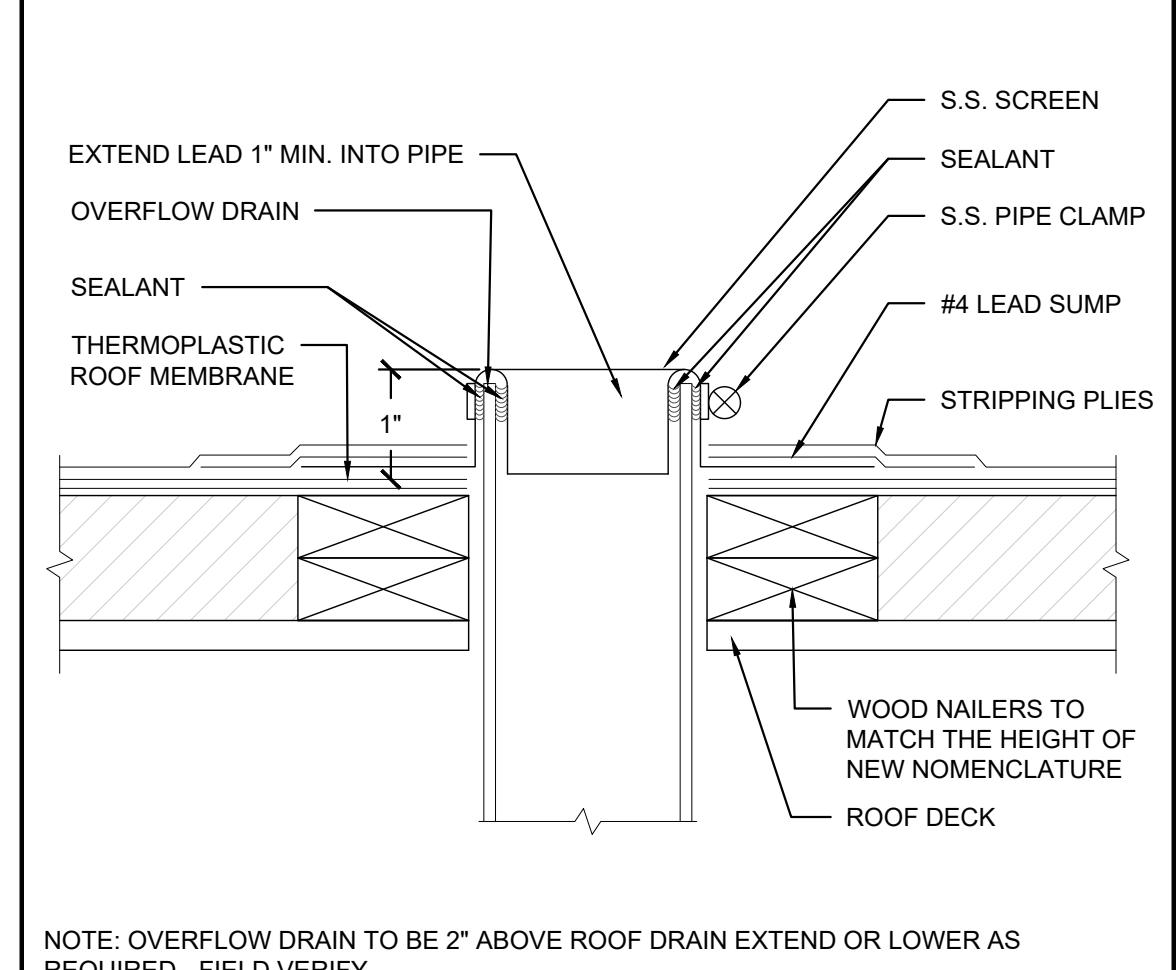
**12 PIPE PENETRATION**  
NOT TO SCALE



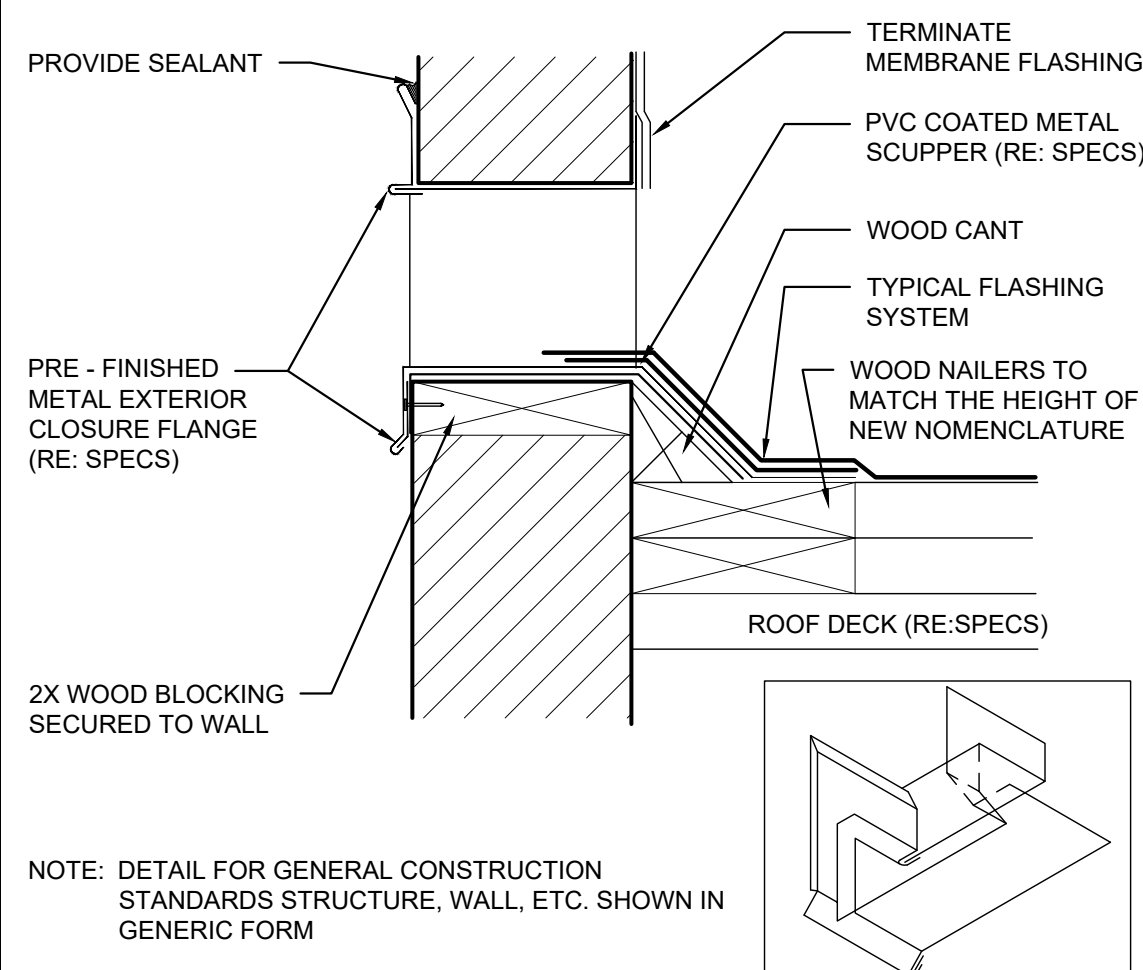
**11 PLUMBING STACK**  
NOT TO SCALE



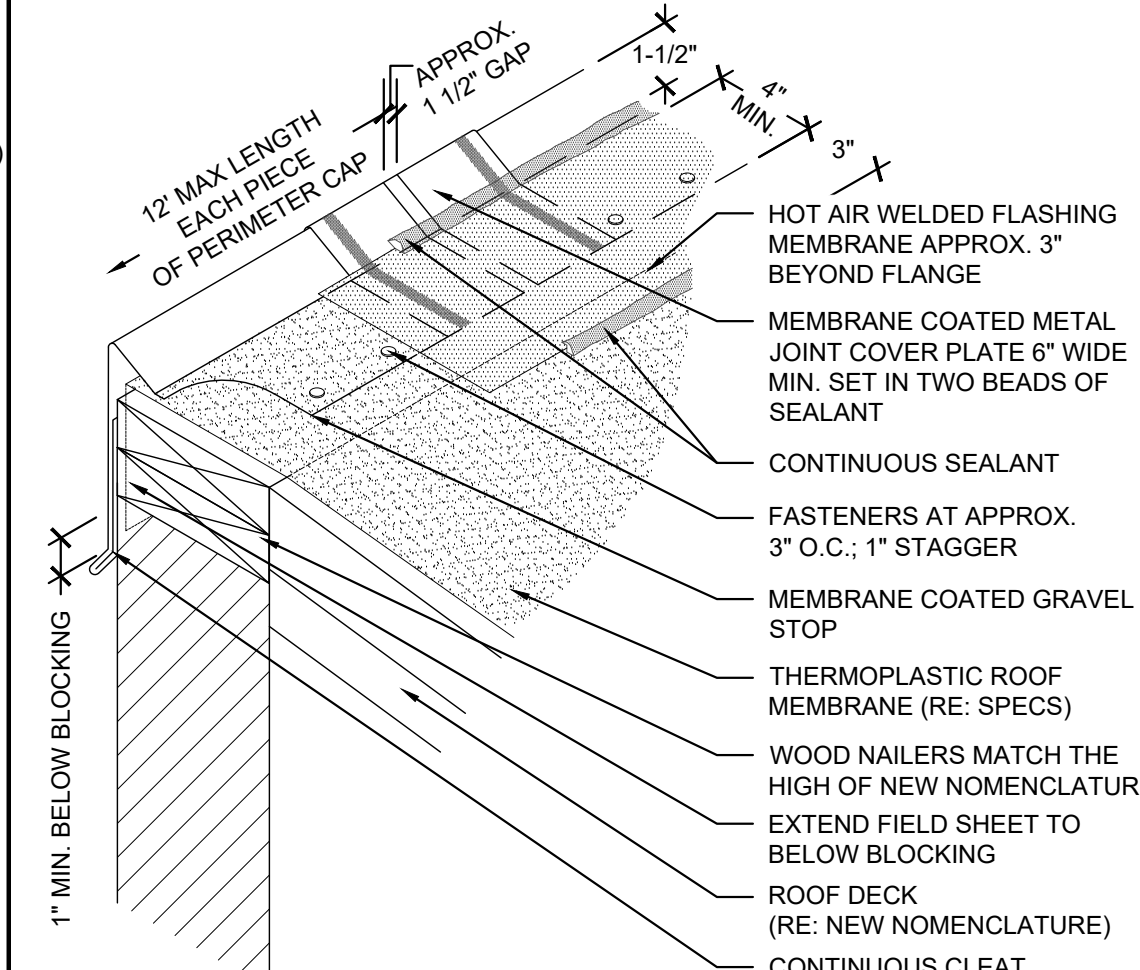
**10 EQUIPMENT CURB**  
NOT TO SCALE



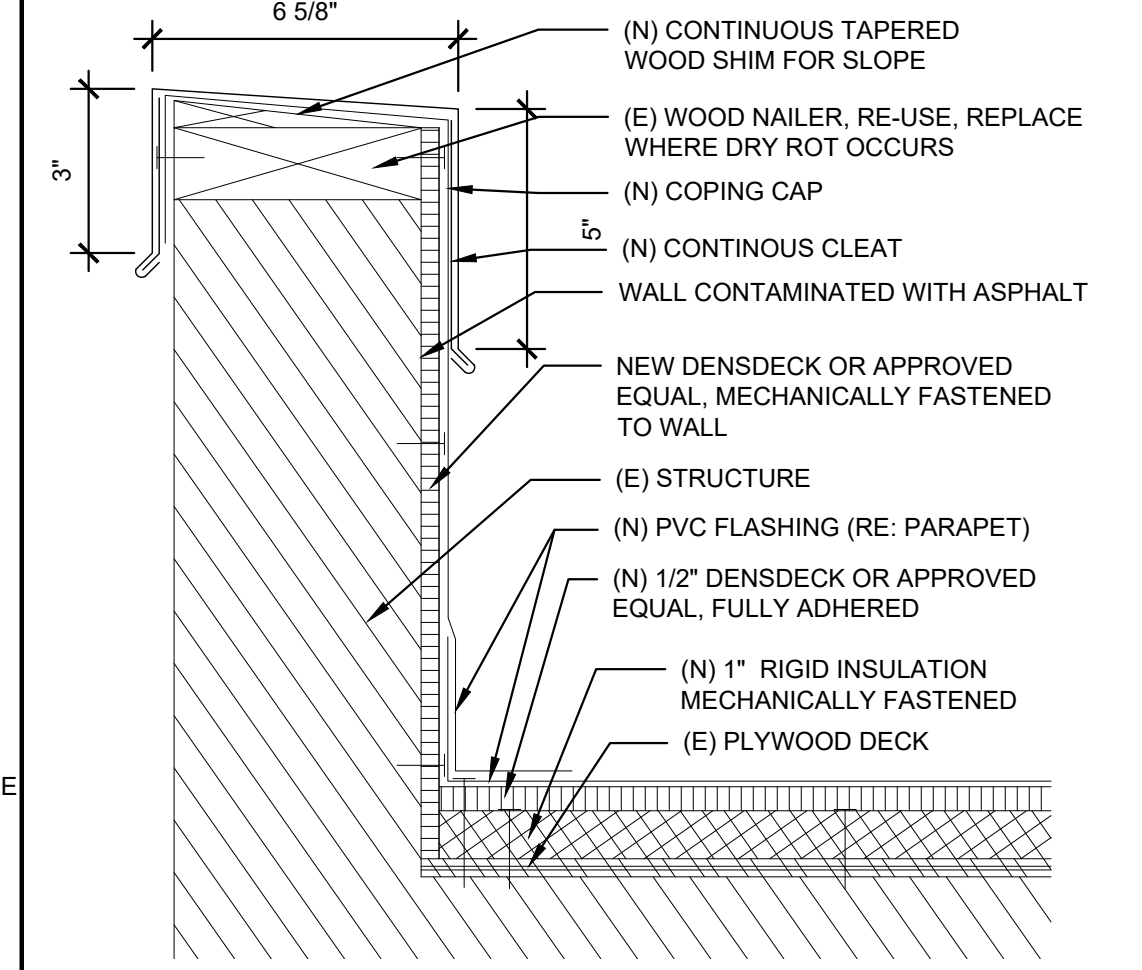
**9 HOT STACK**  
NOT TO SCALE



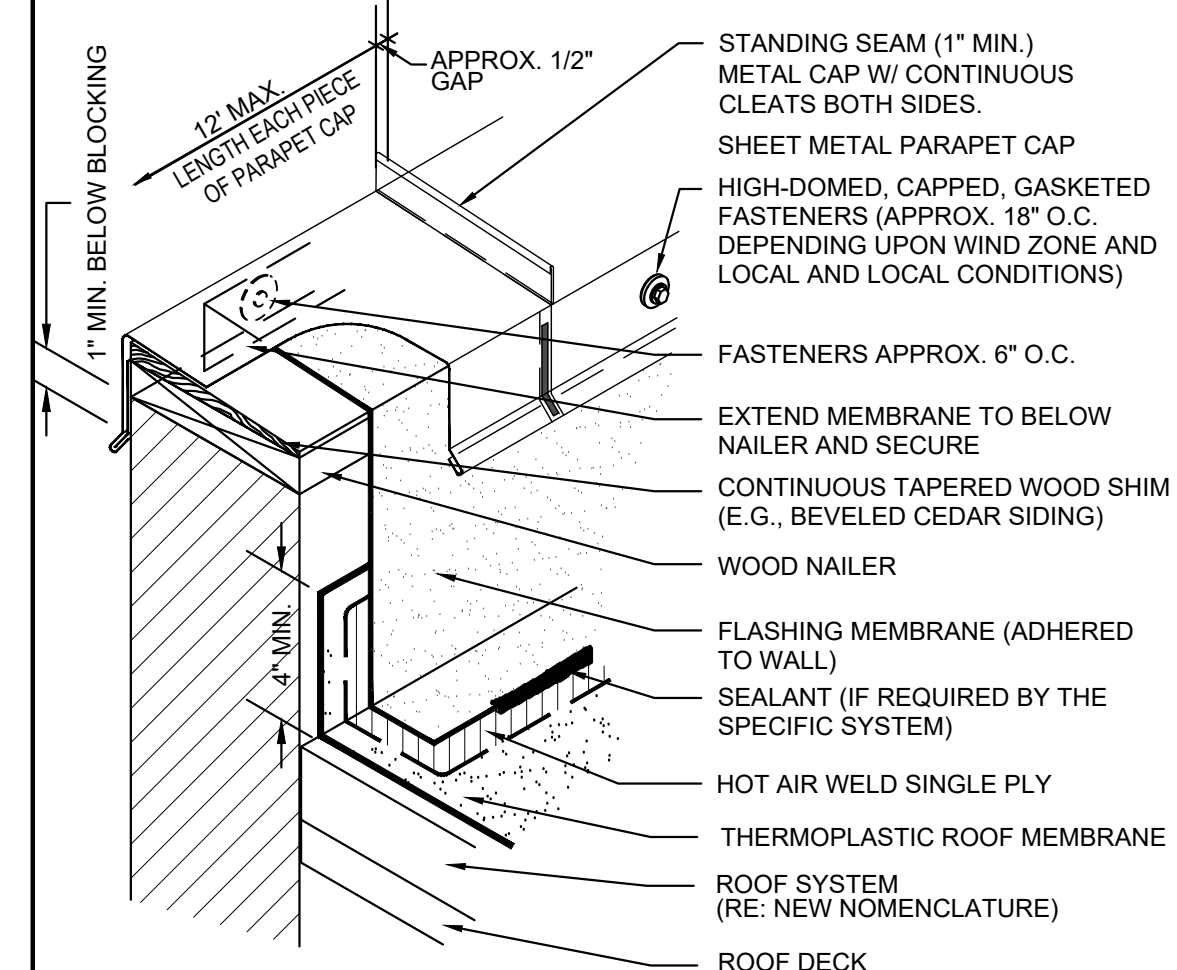
**8 EQUIPMENT SUPPORT CURB**  
NOT TO SCALE



**7 ROOF DRAIN SUMP DETAIL**  
NOT TO SCALE



**6 (E) ROOF DRAIN**  
N.T.S.



**5 OVERFLOW DRAIN**  
N.T.S.

**4 SCUPPER OVERFLOW**  
NOT TO SCALE

**3 PERIMETER EDGE**  
N.T.S.

**2 (E) PARAPET DETAIL**  
NOT TO SCALE

**1 PARAPET & CAP**  
NOT TO SCALE