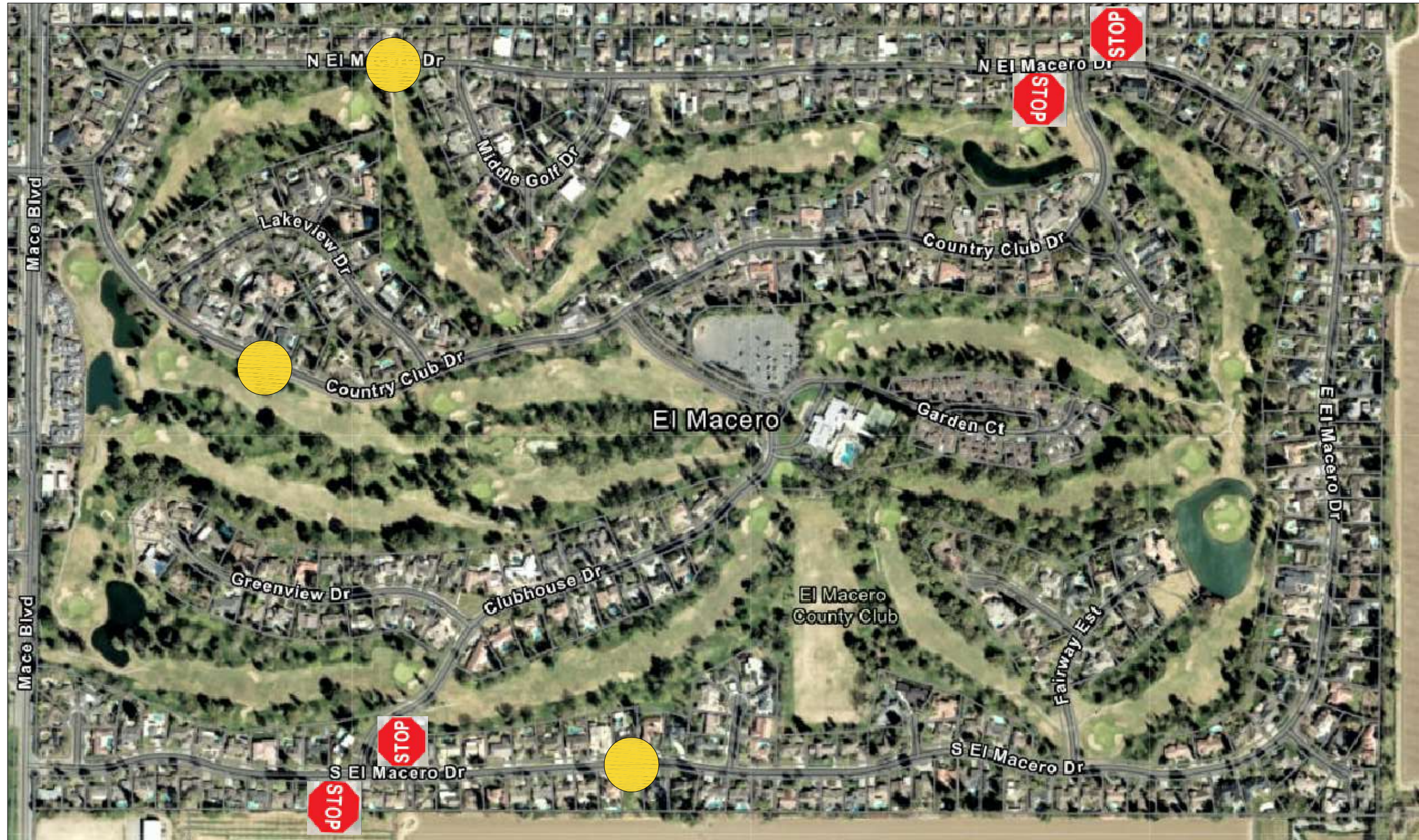


COUNTY OF YOLO  
PUBLIC WORKS DIVISION

EL MACERO TRAFFIC CALMING IMPROVEMENT PLANS



PROJECT LOCATION  
NOT TO SCALE



Legend



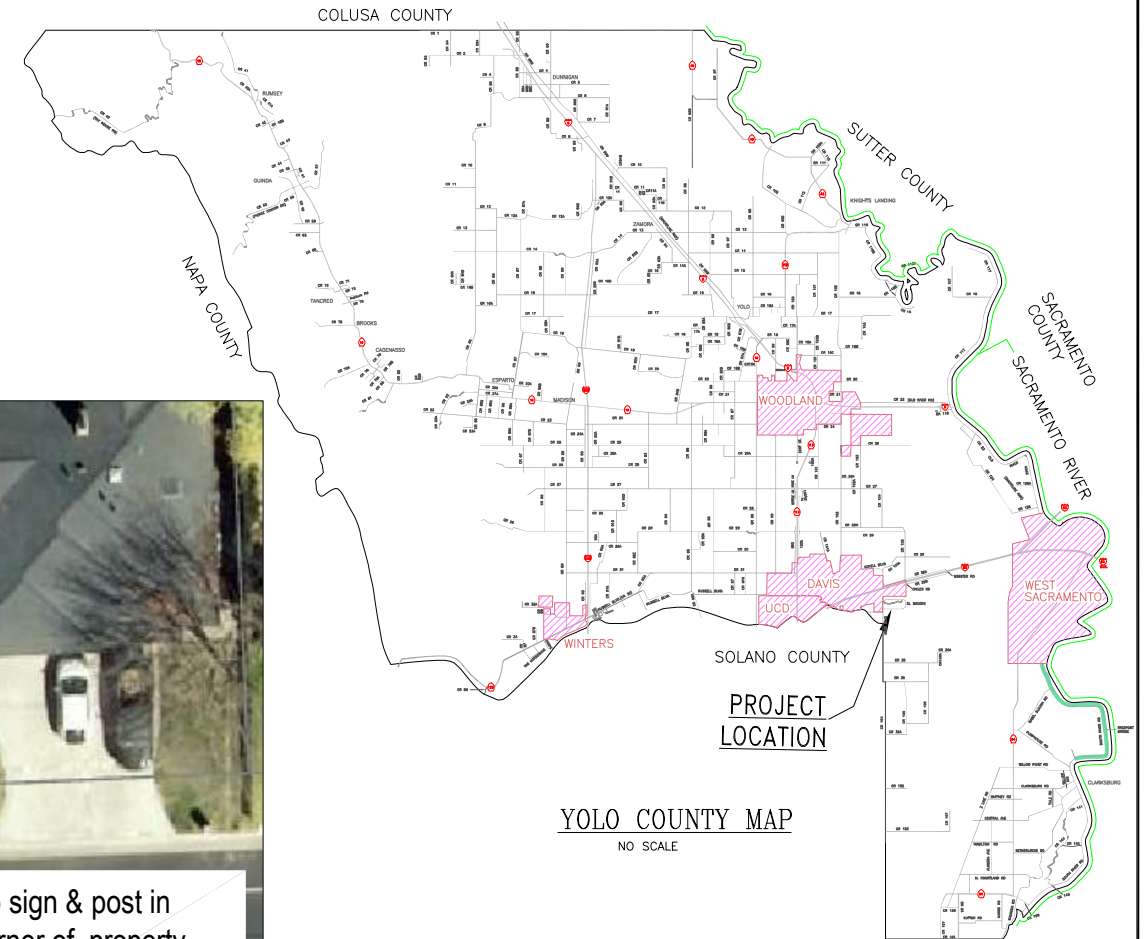
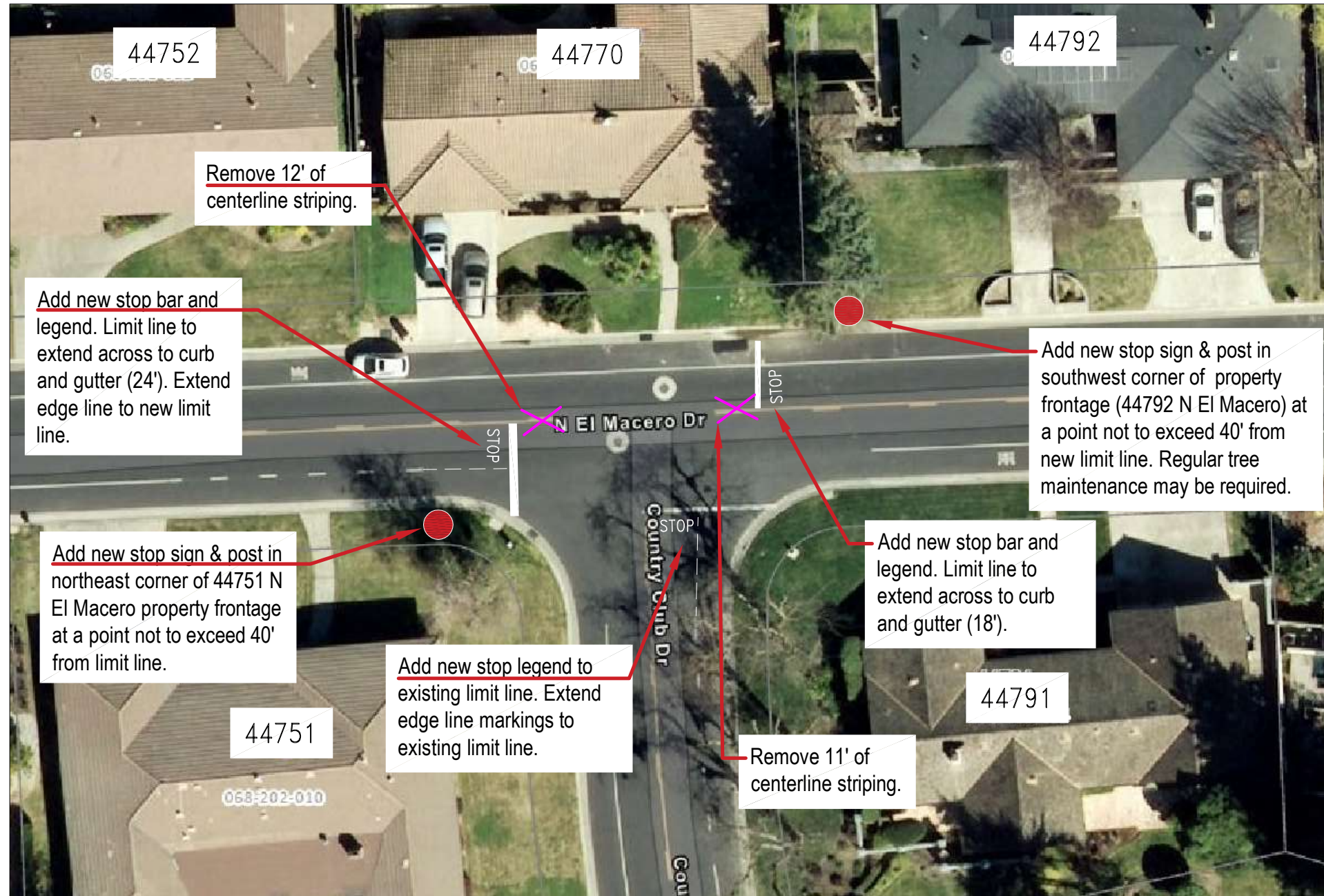
New Stop Sign Locations



Vehicle Speed Feedback Sign Locations

### COUNTY OF YOLO PUBLIC WORKS DIVISION

## ALL-WAY STOP AT INTERSECTION OF NORTH EL MACERO DR & COUNTRY CLUB DR



YOLO COUNTY MAP  
NO SCALE



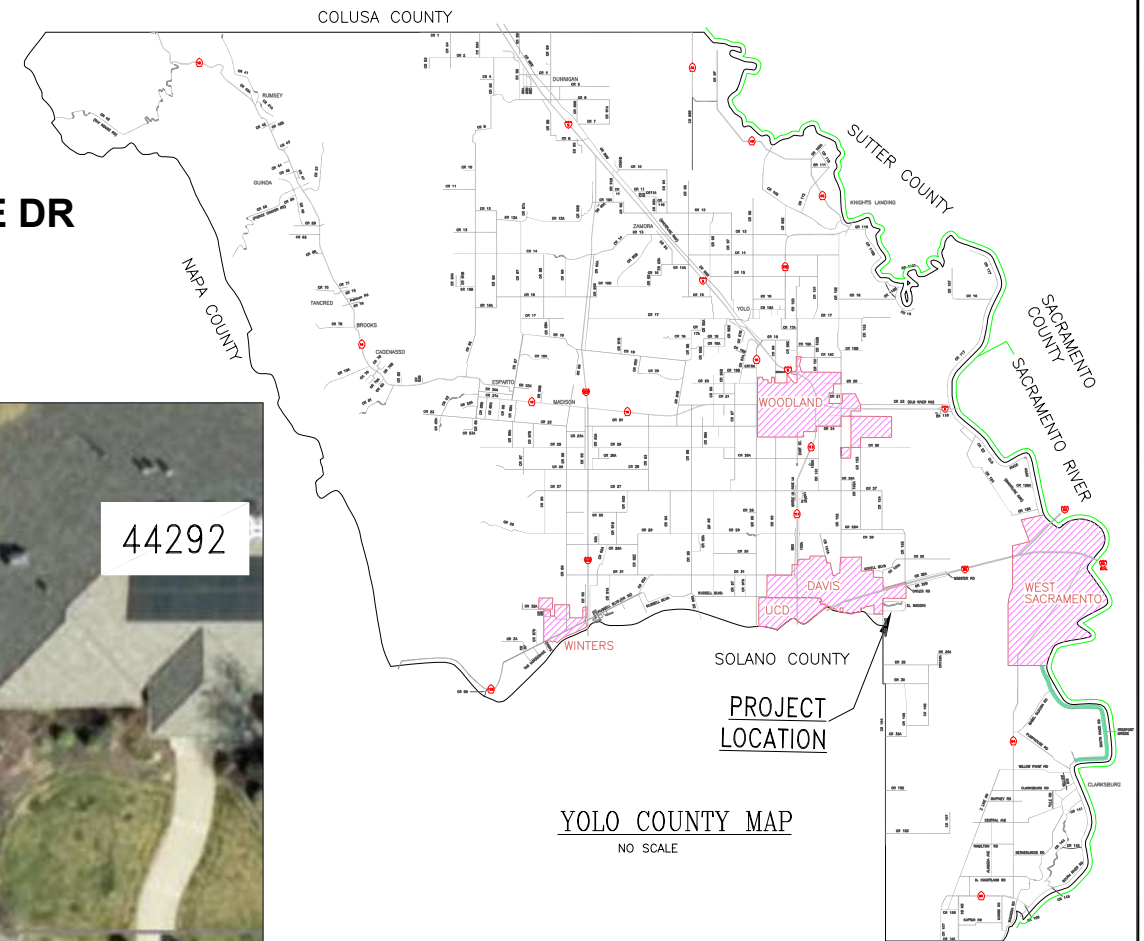
\*\* Final sign placements are dependent on utility alert markings.

PROJECT LOCATION  
NOT TO SCALE



COUNTY OF YOLO  
PUBLIC WORKS DIVISION

ALL-WAY STOP AT INTERSECTION OF SOUTH EL MACERO DR & CLUBHOUSE DR



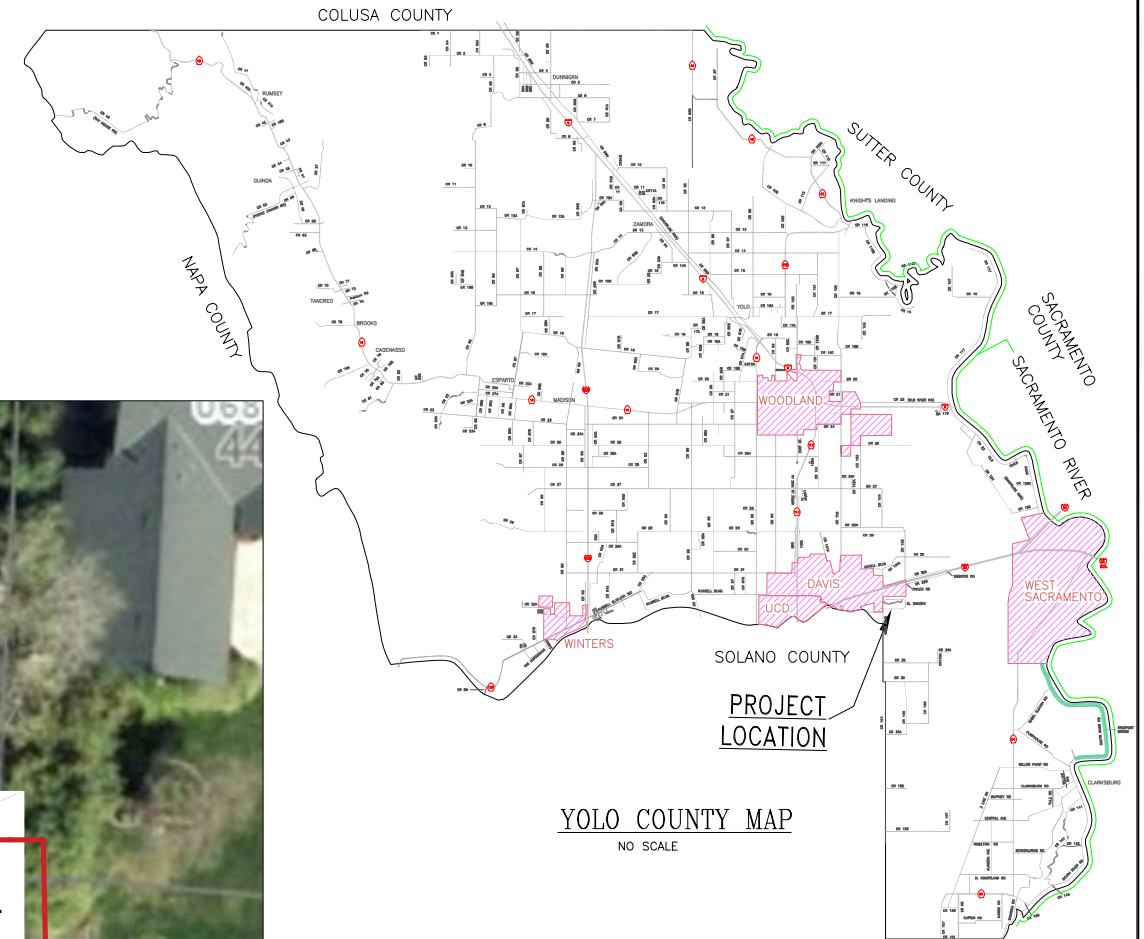
- STOP SIGN
- STOP AHEAD SIGN

PROJECT LOCATION  
NOT TO SCALE



\*\* Final sign placements are dependent on utility alert markings.

COUNTY OF YOLO  
PUBLIC WORKS DIVISION  
INSTALLING A VEHICLE SPEED FEEDBACK SIGN ON SOUTH EL  
MACERO DRIVE



YOLO COUNTY MAP  
NO SCALE

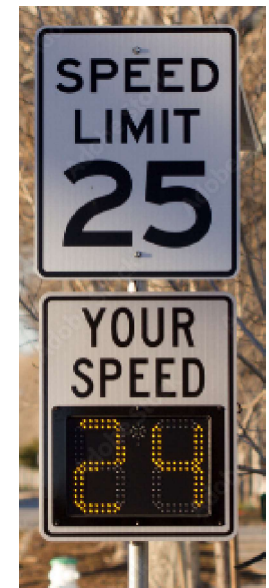
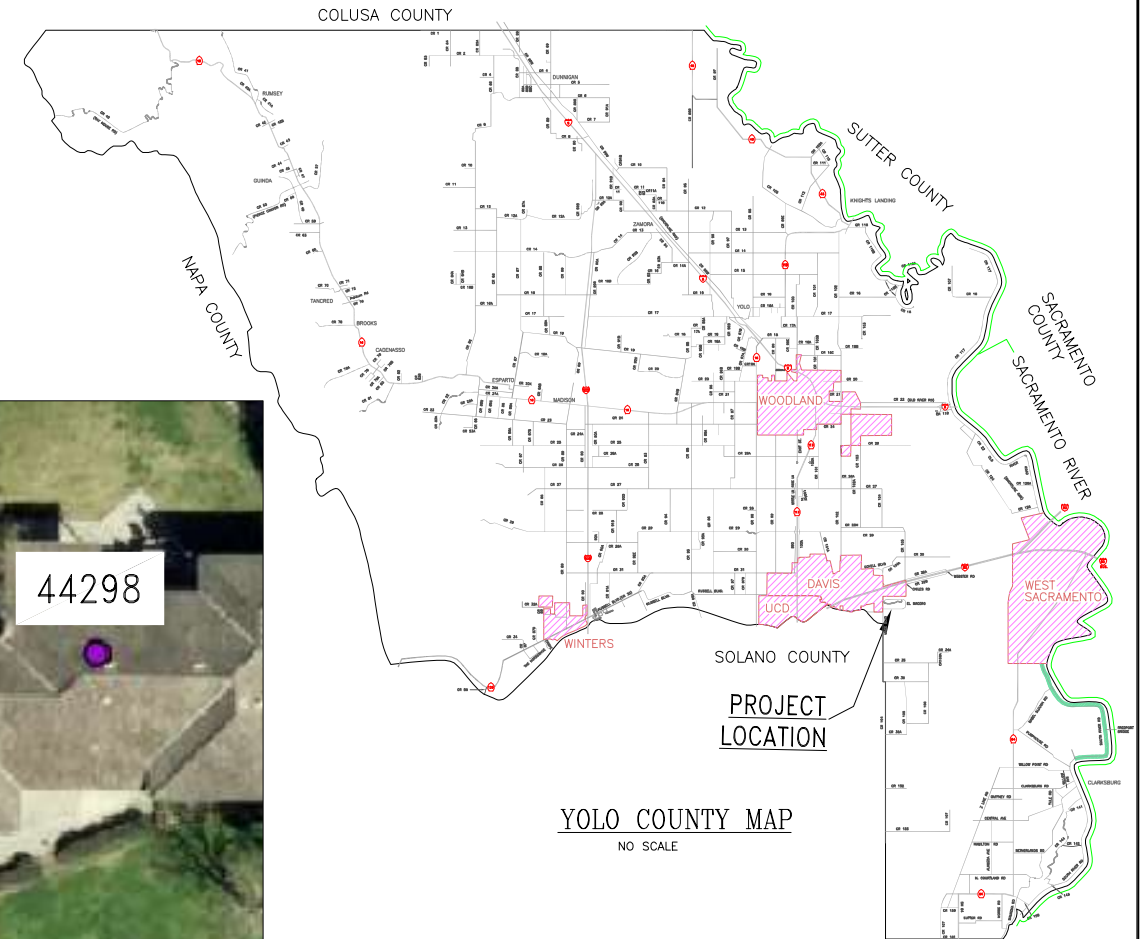
PROJECT LOCATION  
NOT TO SCALE



Vehicle Speed Feedback Sign

\*\*Final sign placement is dependent on utility alert markings.

# COUNTY OF YOLO PUBLIC WORKS DIVISION INSTALLING A VEHICLE SPEED FEEDBACK SIGN ON NORTH EL MACERO DRIVE



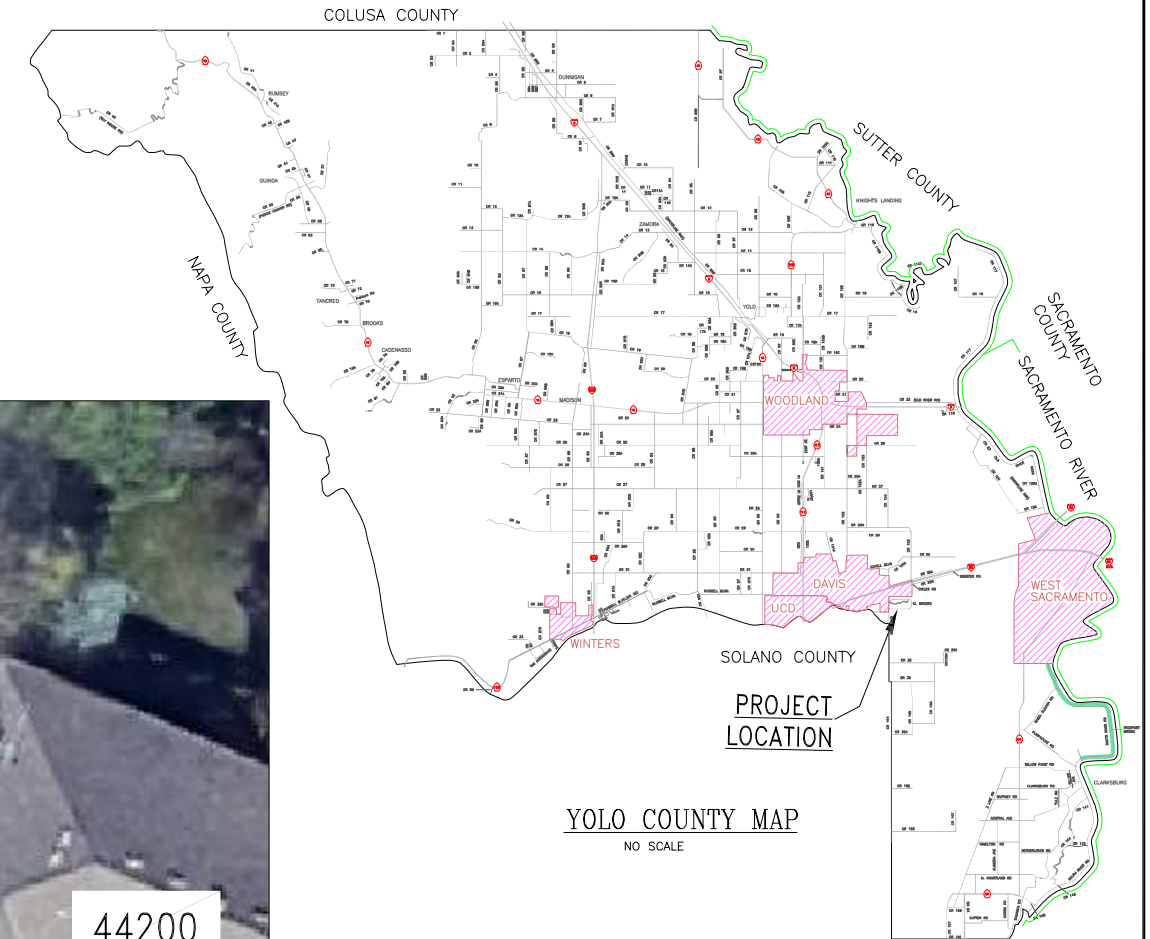
Vehicle Speed Feedback Sign

\*\*Final sign placement is dependent on utility alert markings.

PROJECT LOCATION  
NOT TO SCALE



# COUNTY OF YOLO PUBLIC WORKS DIVISION INSTALLING A VEHICLE SPEED FEEDBACK SIGN ON COUNTRY CLUB DRIVE



Vehicle Speed Feedback Sign

\*\*Final sign placement is dependent on utility alert markings.

PROJECT LOCATION  
NOT TO SCALE



## EL MACERO TRAFFIC CALMING IMPROVEMENTS COST ESTIMATE

**PROJECT SCOPE:** Installing vehicle speed feedback signs at three locations, one each on North El Macero Drive, Country Club Drive, and South El Macero Drive. Installing intersection improvements to establish an all-way stop at the intersection of North El Macero Drive & Country Club Drive as well as the intersection of South El Macero Drive & Clubhouse Drive.

### Summary of Cost Estimate:

Vehicle Speed Feedback Signs	\$	32,767.04
Intersection Improvements (Stop Signs)	\$	28,791.29
<b>Total Project Cost</b>	\$	<b>61,558.33</b>

**SCOPE:** Install three (3) vehicle speed feedback signs in El Macero.

**Locations:** [1. North El Macero : https://maps.app.goo.gl/U3YqPAd2zA4GtKZB6](https://maps.app.goo.gl/U3YqPAd2zA4GtKZB6)

Install new post with R2-1, 25 MPH sign.

[2. Country Club Drive: https://maps.app.goo.gl/JxjhL6A8Q4918KZ16](https://maps.app.goo.gl/JxjhL6A8Q4918KZ16)

Existing post with 25 MPH sign.

[3. South El Macero: https://maps.app.goo.gl/uBAnYhrU5hs8xDCc7](https://maps.app.goo.gl/uBAnYhrU5hs8xDCc7)

Relocate existing post with 25 MPH sign to northeast corner of 4449 S El Macero Dr

Estimate for Vehicle Speed Feedback Signs Installation					
Item	Notes	Units	Quantity	Cost	Total
3 Speed Vehicle Feedback Signs (Bear Electrical Contracted Work)*	Scope summary in quote from Bear Electrical	LUMP SUM	1	\$ 22,782.00	\$ 22,782.00
New Decorative Post with 25 MPH sign		EACH	1	\$ 815.00	\$ 815.00
Shipping and Sales Tax vendor costs	If ordered with stop signs only one shipping charge will be incurred	LUMP SUM	1	\$ 371.31	\$ 371.31
PW Labor for Speed Feedback Signs (USA utility locating, installing posts and signs, traffic control, material and equipment charges)		LUMP SUM	1	\$ 5,819.91	\$ 5,819.91
				Subtotal	\$ 29,788.22
				10% contingency	\$ 2,978.82
				<b>Speed Signs Total</b>	<b>\$ 32,767.04</b>

**Note:** \* Bi-monthly sign and equipment maintenance estimate if provided by Bear Electrical: \$50 per sign (3 signs total, ~ \$900 per year). The CSA will need to establish a contract with a contractor to provide ongoing speed feedback sign maintenance.

**SCOPE:** Install improvements to establish all-way stops at two intersections.

Estimate for Intersection Improvements					
Item	Sign Chart Code	Units	Quantity	Cost	Total
Decorative Post with Stop Signs (No Street Name Signs)	R1-2	EACH	4	\$ 859.00	\$ 3,436.00
Decorative Post with Stop Ahead Sign	W3-1	EACH	1	\$ 999.00	\$ 999.00
All Way Placard	R1-3P	EACH	6	\$ 168.00	\$ 1,008.00
Shipping and Sales Tax vendor costs	If ordered with speed limit sign only one shipping charge will be incurred	LUMP SUM	1	\$ 926.26	\$ 926.26
Stop Bars - 81 linear feet		BOXES	4	\$ 187.00	\$ 748.00
Stop Word Legends		EACH	6	\$ 248.00	\$ 1,488.00
4" White Line Striping - 110 feet (Broken - Detail 39A)		BOXES	2	\$ 176.40	\$ 352.80
4" Yellow Line Striping - 12 feet (OneDirection No Passing - Detail 15)		BOXES	1	\$ 189.00	\$ 189.00
Removing Striping (12 feet and one 25 mph ground marking)		HRS	45	\$ 89.56	\$ 4,030.20
Labor for all work involved (crew of 4, materials and equipment)		HRS	144	\$ 89.56	\$ 12,896.64
Propane Tanks (for burn downs)		EACH	1	\$ 100.00	\$ 100.00
				Subtotal	\$ 26,173.90
				10% contingency	\$ 2,617.39
				<b>Stop Signs Total</b>	<b>\$ 28,791.29</b>