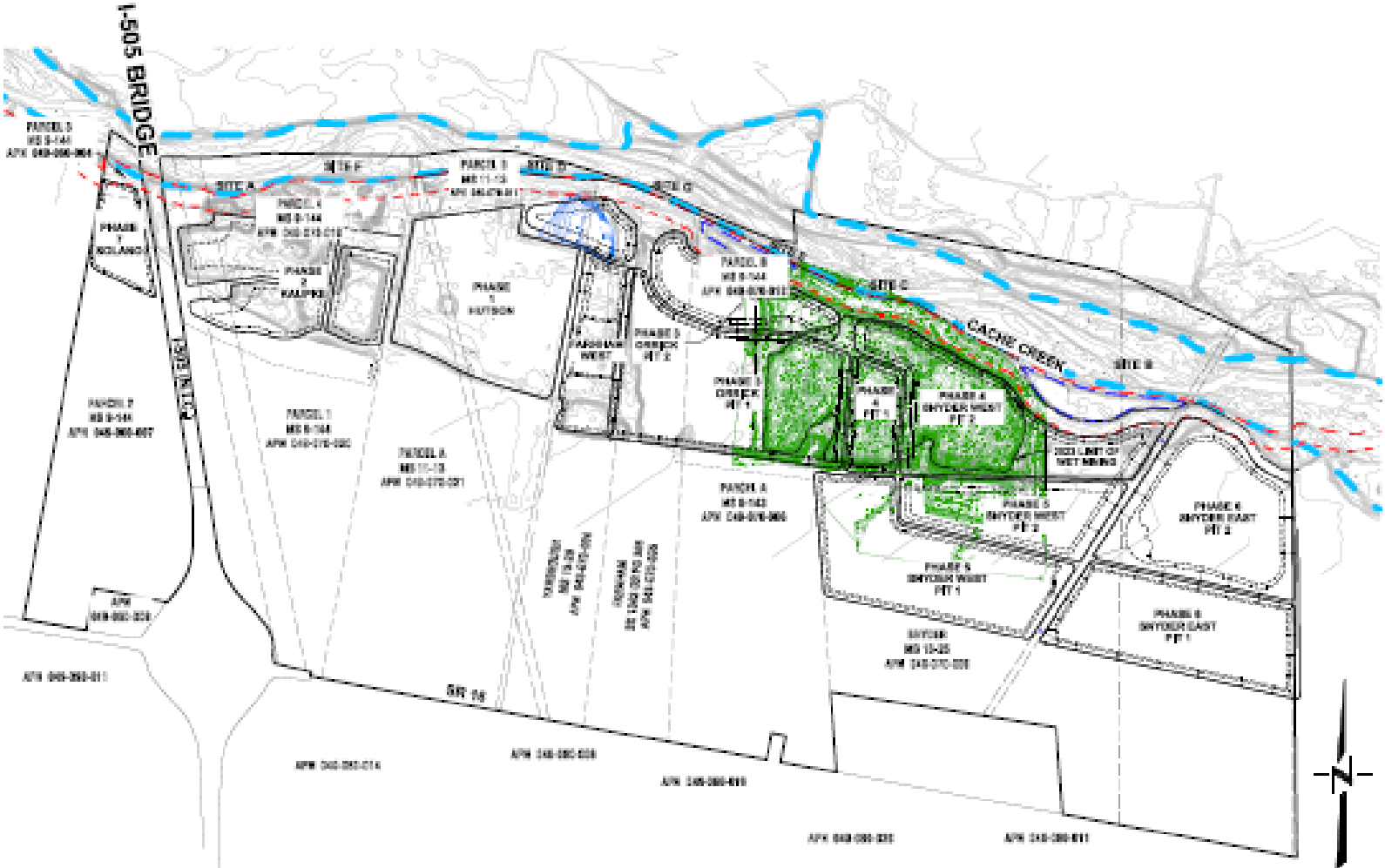


**ATTACHMENT F**

**MINING SITES BOUNDARIES AND 2023 SMARA INSPECTION PHOTOS**

# CEMEX



## SITE MAP

SCALE 1" = 1000'



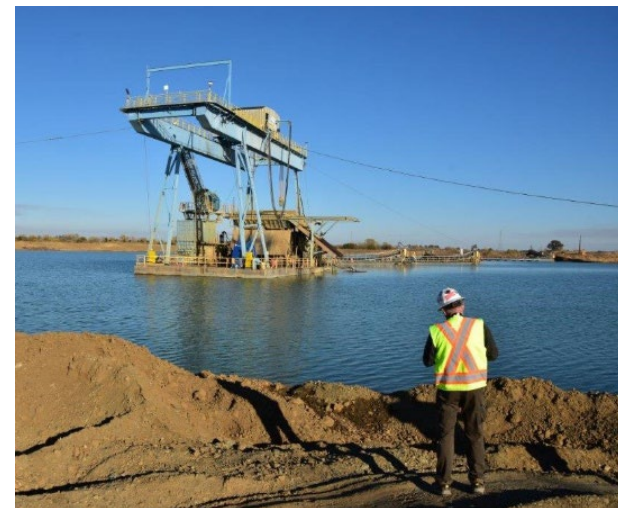
**Phase 4 Southern Boundary  
Looking Southeast**



**Overburden Removal  
20-Acre Interim Mining Area**



**Depositing Overburden Soil  
for Future Reclamation**



**Floating Dredge in Southeast  
Portion of Phase 4**

# Granite Capay





**Wash Fines Pumped into Pit  
for Future Reclamation**



**Mining in Central Cell using  
Front End Loader**



**Active Mining Central Cell**



**Reclamation Activity  
Southwest portion of Site**





**Vegetated Soil Stockpile  
with Signage**



**Idle Plant Equipment –  
Shows Well-Maintained Site**



**Previously Mined Area A2 –  
2022 Inspection**



**Previously Mined Area A2 –  
2023 Inspection**


# Teichert Esparto






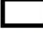
## SMARA Annual Reporting Year 2022

Teichert Aggregates  
Esparto: Reiff/Mast Property  
Yolo County, California

California Mine ID: 91-57-0011

-  Total Disturbed Area (Approximate)  
± 232 Acres
-  2022 Disturbed Area  
0 Acres

### Reclamation:

-  Reclamation In Progress (Approximate)
-  Reclamation Construction & Revegetation Completed, Monitoring in Progress (Approximate)
-  Reclamation Completed: Signed Off  
0 Acres
-  Property Boundary (Approximate)

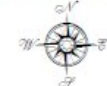
### Financial Assurance Amounts:

Esparto - Reiff: \$ 849,194.00

Esparto - Mast: \$ 648,585.00

**Total: \$ 1,497,779.00**

Aerial Photography Provided by  
ESRI Basemaps & Affiliates  
(Maxar, March 18, 2022)



0 250 500 1,000 Feet

\*\* Boundary and area features were hand drawn. No liability is assumed for the accuracy of the data shown.



**Esparto Plant & Stockpiles Looking North**



**Combined Reif & Mast Pits Looking North**

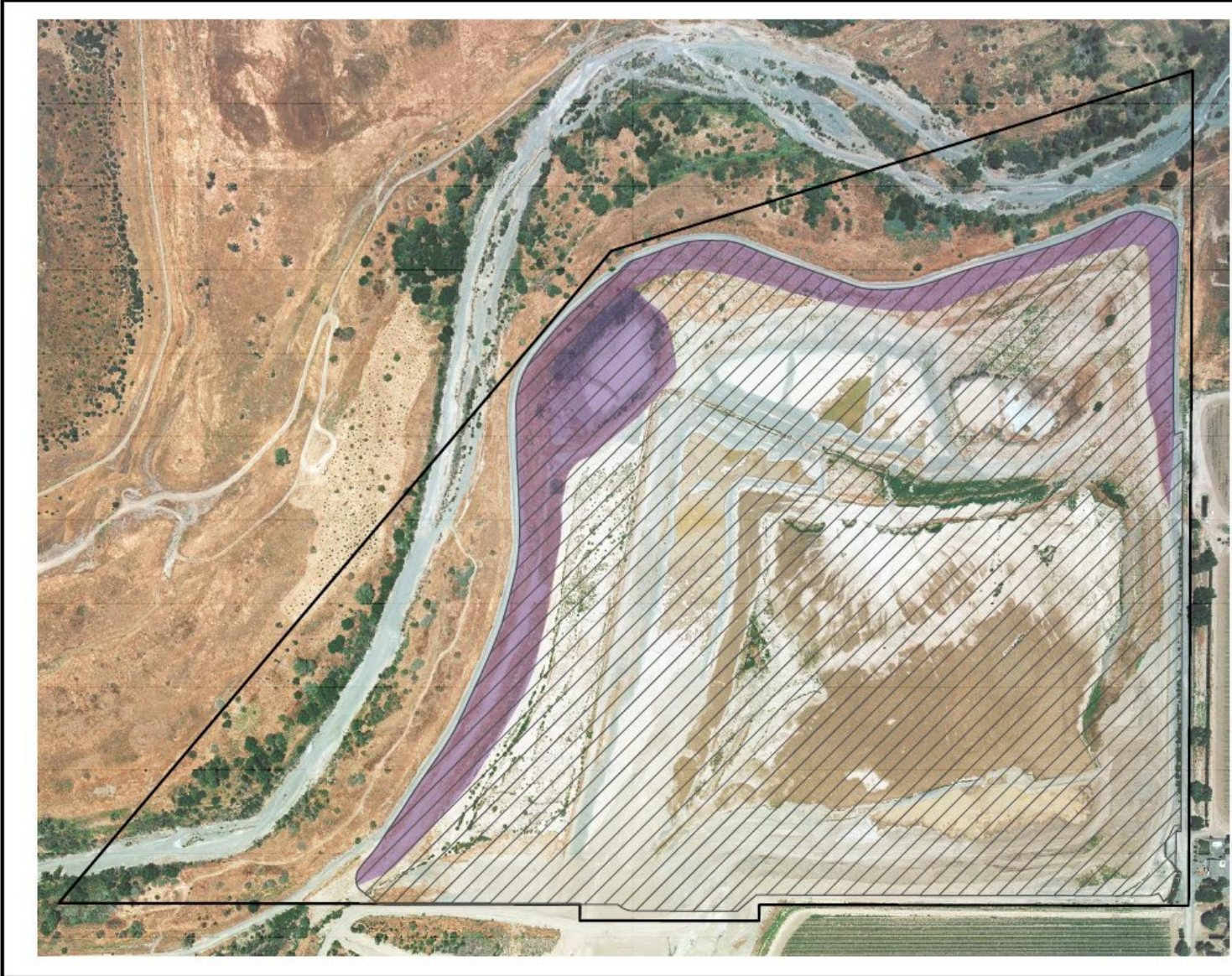


**Combined Reif & Mast Pits Looking South**



**North Bank of Cache Creek – Looking North**

# Teichert Schwarzgruber







**SMARA Annual Reporting Year 2022**

**Teichert Aggregates  
Woodland: Schwarzgruber  
Yolo County, California**

California Mine ID: 91-57-0006

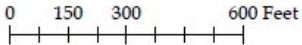
-  Total Disturbed Area (Approximate) ± 96 Acres
-  2022 Disturbed Area (Approximate) 0 Acres

**Reclamation:**

-  Reclamation In Progress (Approximate)
-  Reclamation Construction & Revegetation Completed, Monitoring In Progress (Approximate)
-  Reclamation Completed: Signed Off 0 Acres
-  Property Boundary (Approximate)

**Financial Assurance Amount:**  
\$ 781,723.00

Orthophoto Provided by  
Point Co. (June 1, 2022)



\*\* Boundary and area features were hand drawn. No liability is assumed for the accuracy of the data shown.



**South Bank of Pit Looking West  
Additional Slope Grading needed for  
Reclamation**



**Soil Fill Area - Preparation for Reclamation**



**CR 96 Regrade – Access to Levee Road  
Looking Southeast**


# Teichert Woodland Plant




## SMARA Annual Reporting Year 2022


### Teichert Aggregates Woodland: Plant Site Yolo County, California


California Mine ID: 91-57-0002


 Total Disturbed Area (Approximate)  
± 130 Acres


 2022 Disturbed Area  
0 Acres

#### Reclamation:

 Reclamation In Progress (Approximate)

 Reclamation Construction & Revegetation Completed, Monitoring In Progress (Approximate)


 Reclamation Completed: Signed Off  
0 Acres

 Property Boundary (Approximate)

**Financial Assurance Amount:**  
**\$ 552,946.00**

Orthophoto Provided by  
Point Co. (June 1, 2022)  
Background Aerial Photography  
Provided by ESRI Basemaps & Affiliates  
(Yolo County - March 18, 2022)



0 200 400 800 Feet  


\*\* Boundary and area features were hand drawn. No liability is assumed for the accuracy of the data shown.



**Conveyor from Teichert Shifler to  
Woodland Plant**



**Aggregate Material Conveyed from  
Teichert Shifler**



**Concrete Recycling  
Teichert Woodland Plant**

# Teichert Shifler





**Shifler Aggregate Excavation using  
Scraper**



**Overburden Removal using  
Excavator**



**Shifler- Cache Creek Bank  
Stabilization Area**



**New Soil Stockpiles**



**Soil Stockpile  
Signage**