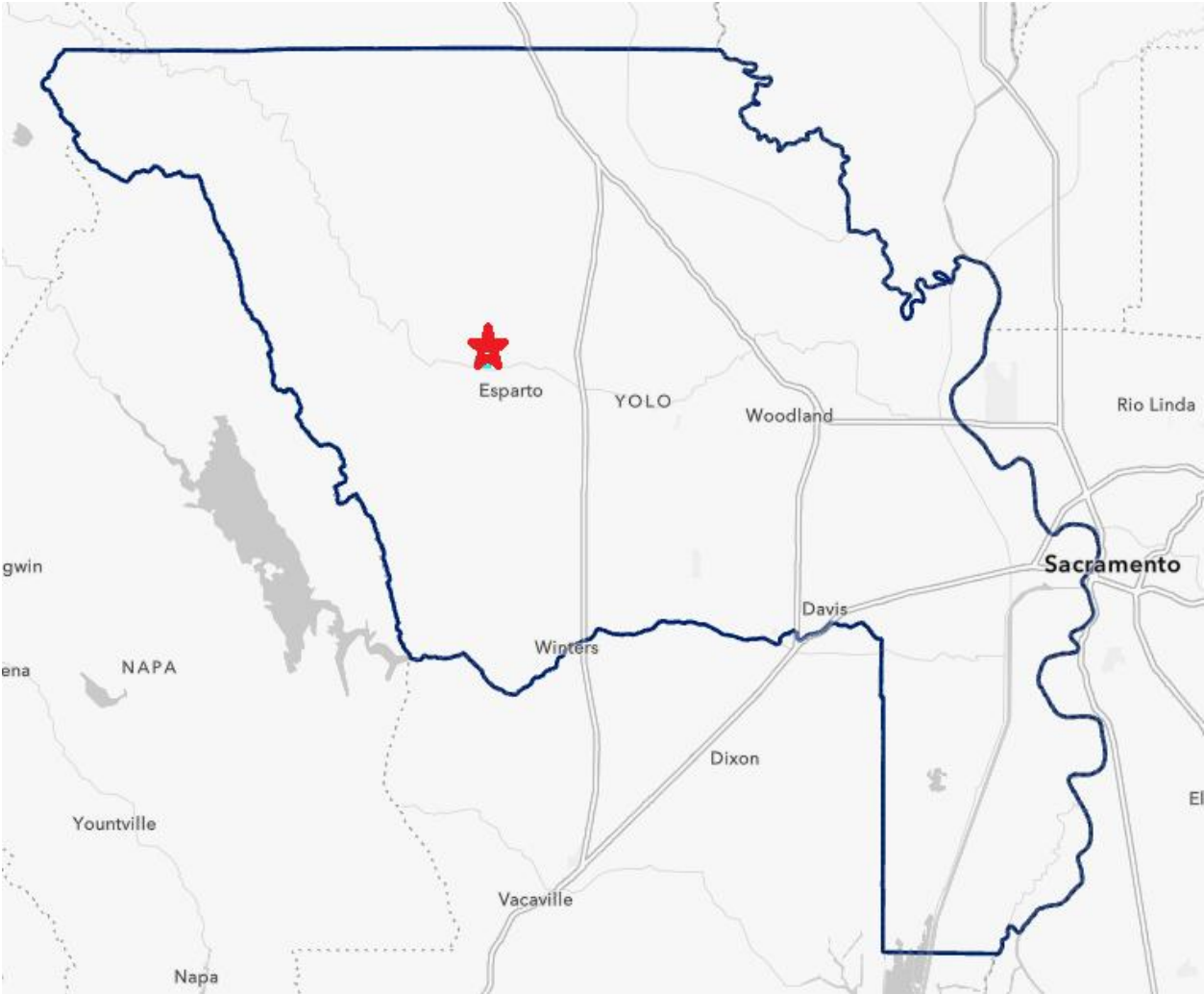
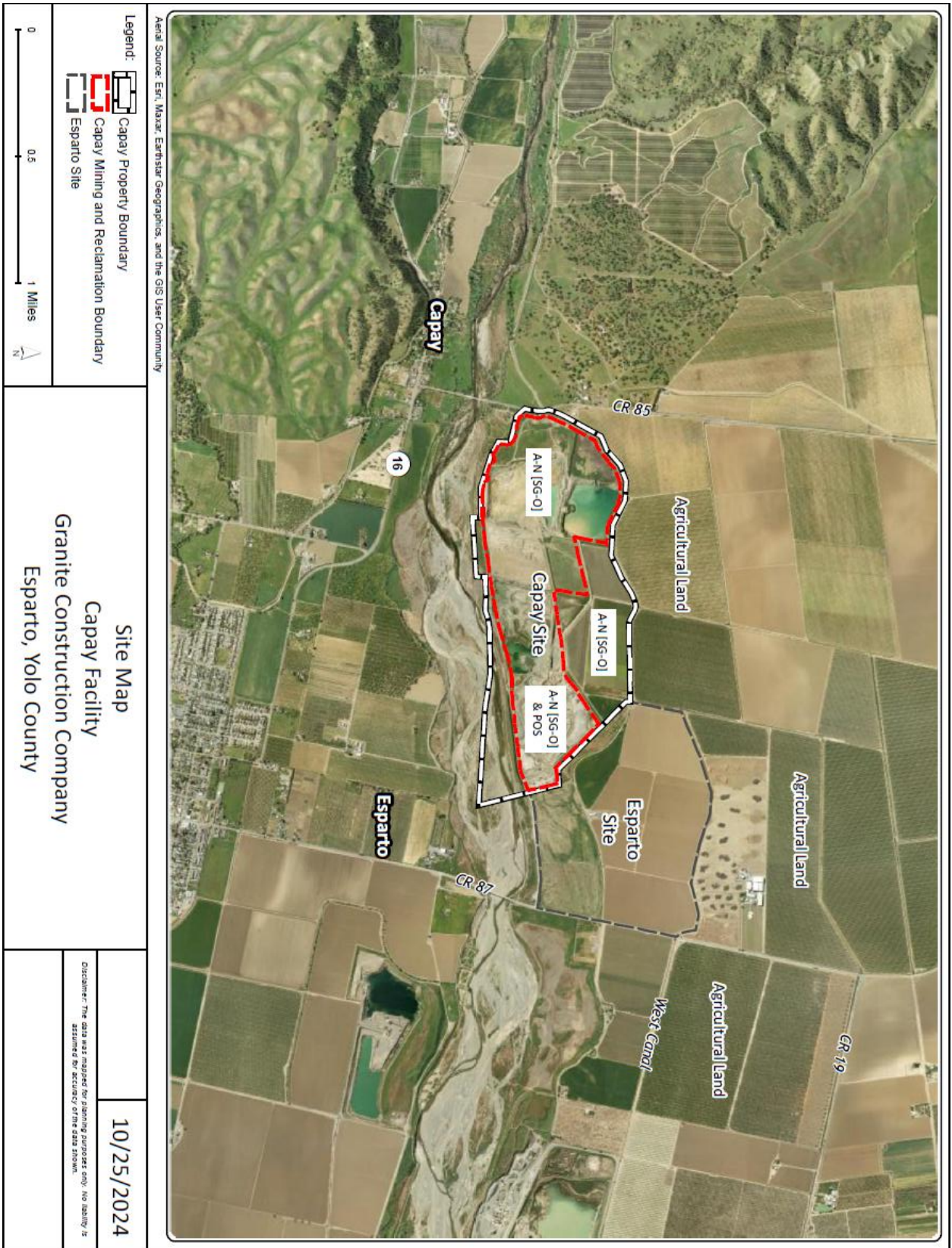


Attachment A. Vicinity and Project Site Maps




Vicinity Map

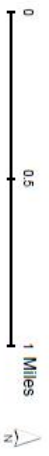


Project Site Map



Aerial Source: Esri, Maxar, Earthstar Geographics, and the GIS User Community

- Legend:**
-  Capay Property Boundary
 -  Capay Mining and Reclamation Boundary
 -  Esparto Site



Site Map
Capay Facility
Granite Construction Company
Esparto, Yolo County

Disclaimer: The data was prepared for planning purposes only. No liability is assumed for accuracy of the data shown.

10/25/2024