



YOLO COUNTY
RCD

Yolo County Resource Conservation District

Helping people protect, improve and sustain the natural resources of Yolo County.

Presentation to the Yolo County Board of Supervisors

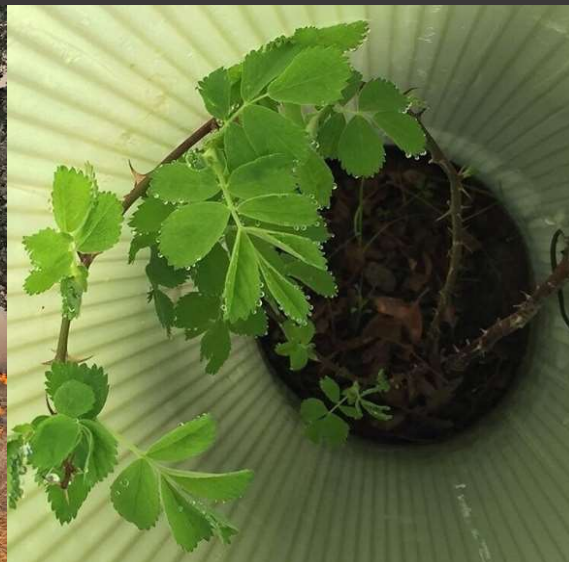
February 2025

Heather Nichols, Executive Director

The RCD promotes land stewardship and is committed to conserving the natural resources of Yolo County by implementing on-the-ground, community-based projects that address evolving resource concerns.

We provide responsive, non-regulatory service to the community through the following programs:

- COMMUNITY WILDFIRE PREVENTION
- FARM AND RANCH TECHNICAL ASSISTANCE
- OPEN SPACE LANDS MANAGEMENT
- PLANNING, MONITORING, & STUDIES



Community Wildfire Prevention

ACTIVE PROJECTS

- Yolo-Solano Fire Resilience Program
- Reflective Address Sign Program
- Neighborhood Chipper Program
- Prescribed Fire and Grazing
- Yolo Prescribed Burn Association

THIS YEAR

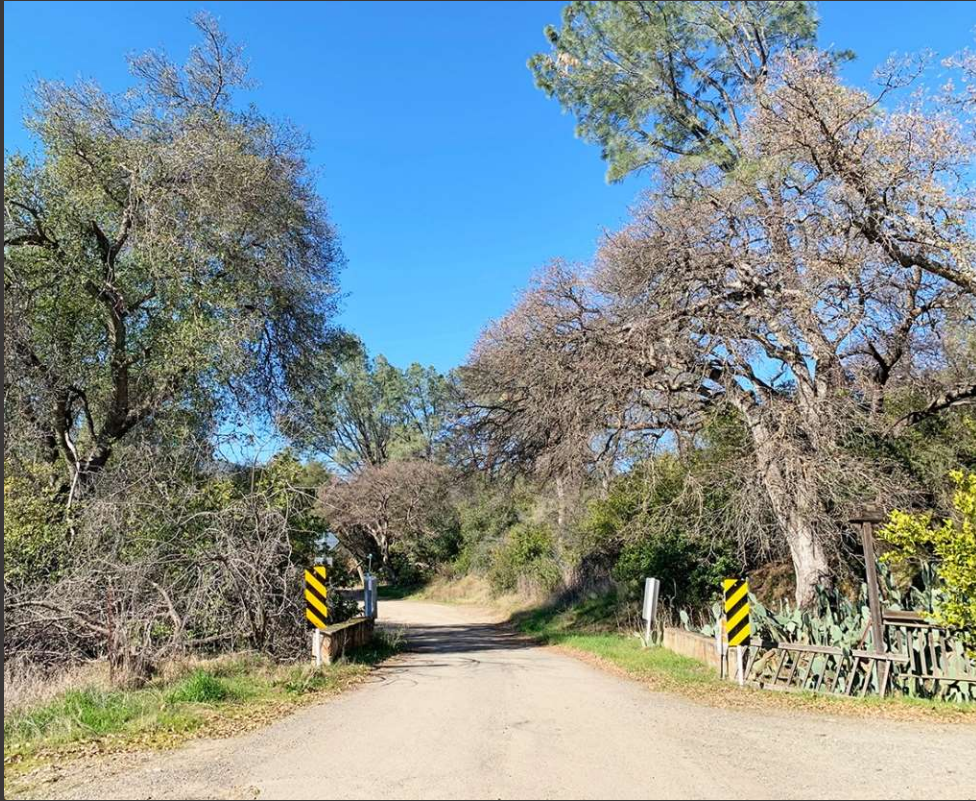
- One mile of shaded fuel break
- 29,217 cubic yards of defensible space debris chipped

IMPACT

- Improved wildfire prevention for over 100 homes in our community



Before



After

Farm and Ranch Technical Assistance

ACTIVE PROJECTS

- Free non-regulatory technical assistance
- On-farm irrigation evaluations and pump testing
- Application assistance for CDFA Healthy Soils and SWEEP and USDA NRCS cost-share programs
- Free conservation coaching for Kitchen Table Advisors underserved small farmers
- On-farm pollinator and wildlife habitat implementation

THIS YEAR

- 62 on-farm water pump efficiency tests
- 58 on-farm wildlife habitat plantings with high schools
- 8 Yolo County growers received \$1.14 million in SWEEP and HSP funding

IMPACT

- Increased efficiency of power & water use on more than 50 farms



Open Space Lands Management

ACTIVE PROJECTS

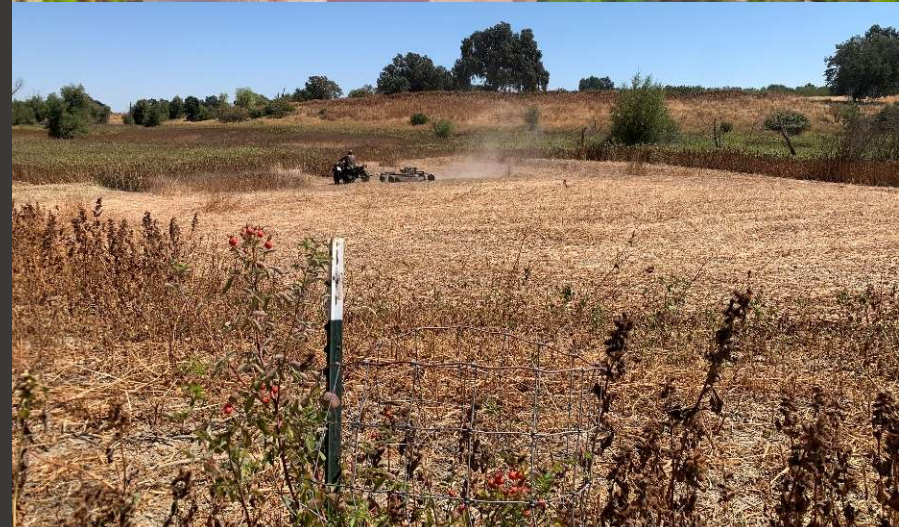
- Putah and Cache Creeks
- Yolo Bypass Wildlife Area
- City of Davis Open Spaces
- Woodland Regional Park
- Woodland Pacific Flyway Pond
- Delta Region

THIS YEAR

- 153 acres of invasive weeds treated
- 3,372 native trees and shrubs planted
- 2,309 native grassland plants planted
- 2,569 native pollinator plants planted

IMPACT

- 161 total acres of habitat for biodiversity
- Implemented planting that will remove the equivalent to 221,551 miles driven by gasoline-powered vehicle



Planning, Monitoring and Studies

ACTIVE PROJECTS

- Westside Sacramento Integrated Regional Water Management Plan (IRWM)
- Natural and Working Lands TAC for the Yolo CAAP
- Yolo County Weed Management Area
- Sac Valley Soil Hub
- Yolo Habitat Conservancy monitoring and implementation

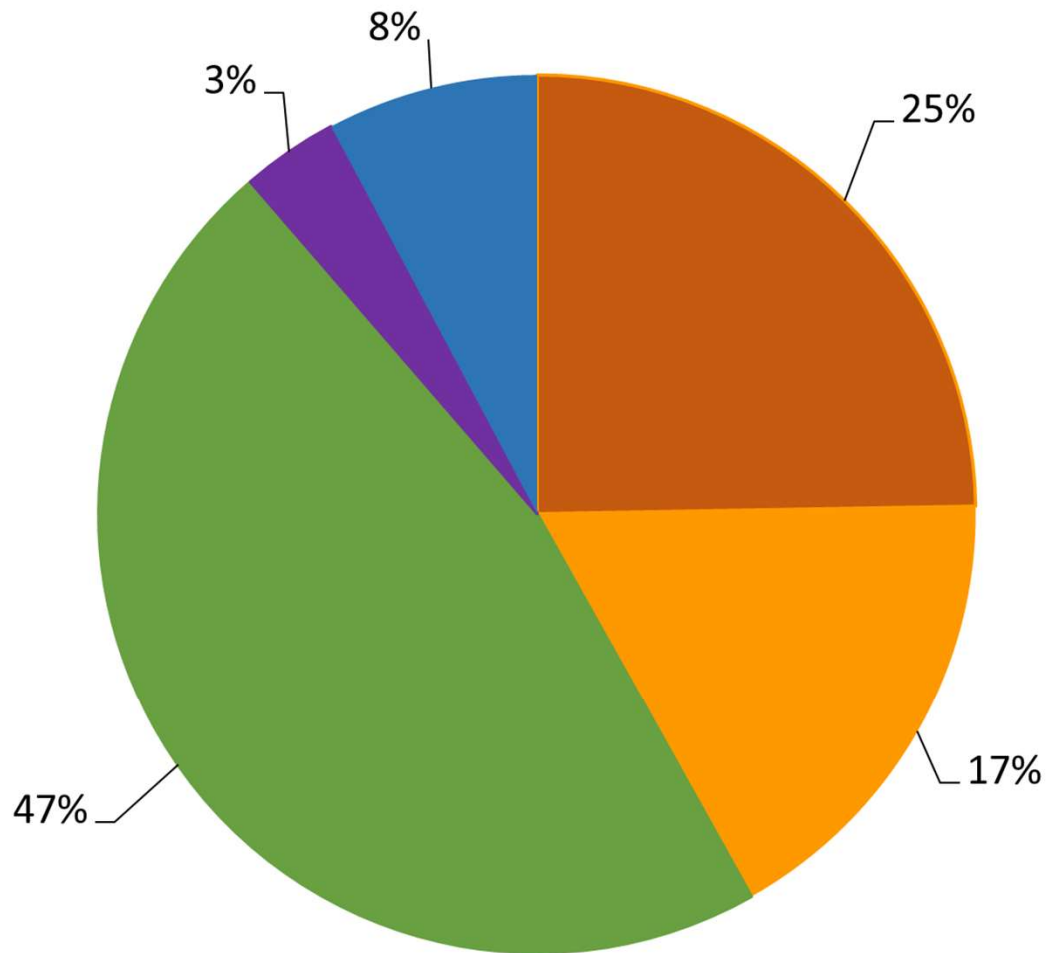
THIS YEAR

- Dunnigan Groundwater Recharge Project
- Ag community's input in the CAAP
- Countywide coordinated weed action
- Increased capacity for the Sac Valley RCDs for on-farm technical assistance
- Successful monitoring and restoration on conservation easement system



RCD Annual Report 2023-2024

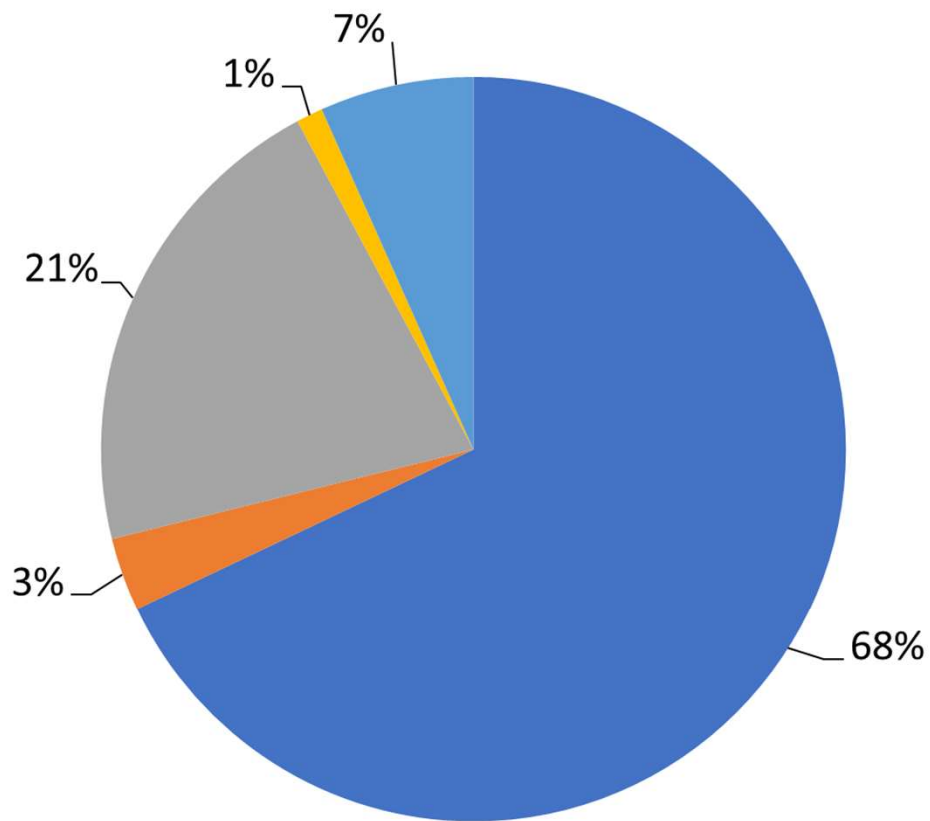
PROJECTS AND PROGRAMS BY TYPE



- Community Wildfire Prevention
- Farm and Ranch Technical Assistance
- Open Space Lands Management
- Planning, Monitoring and Studies
- District Operations

RCD Annual Report 2023-2024

PROJECTS AND PROGRAMS BY FUNDING SOURCE



\$2.47 Million Annual Budget

- State grants and contracts
- Federal grants and contracts
- County and regional grants and contracts
- Local property taxes
- Administrative overhead from projects, interest and misc. income

For every \$1 in property taxes, the RCD delivers \$86.77 of conservation services.

Looking forward...

Conservation trends:

- Groundwater and water resources
- Watershed resilience
- Tribal engagement
- Sustaining farms and ranches
- Fuels implementation

Upcoming work:

- Woodland Regional Park
- Pacific Flyway Pond
- Mobile Irrigation Lab
- Healthy Soils and SWEEP funds



Staff Presentation Series
On ZOOM
Fourth Thursdays 5-6pm



Yolo County RCD
221 West Court St. Suite 1
Woodland, CA 95695
(530) 661-1688
yolorcd.org
[RCD Newsletter via email](#)
Follow us on Facebook
Instagram @yolorcd