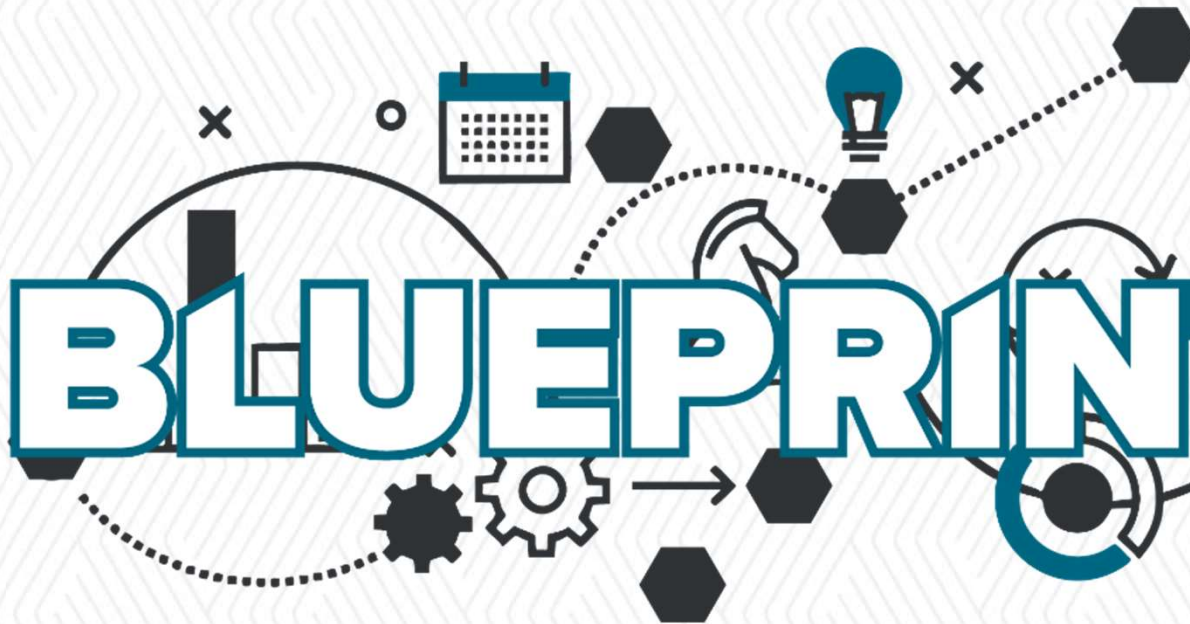
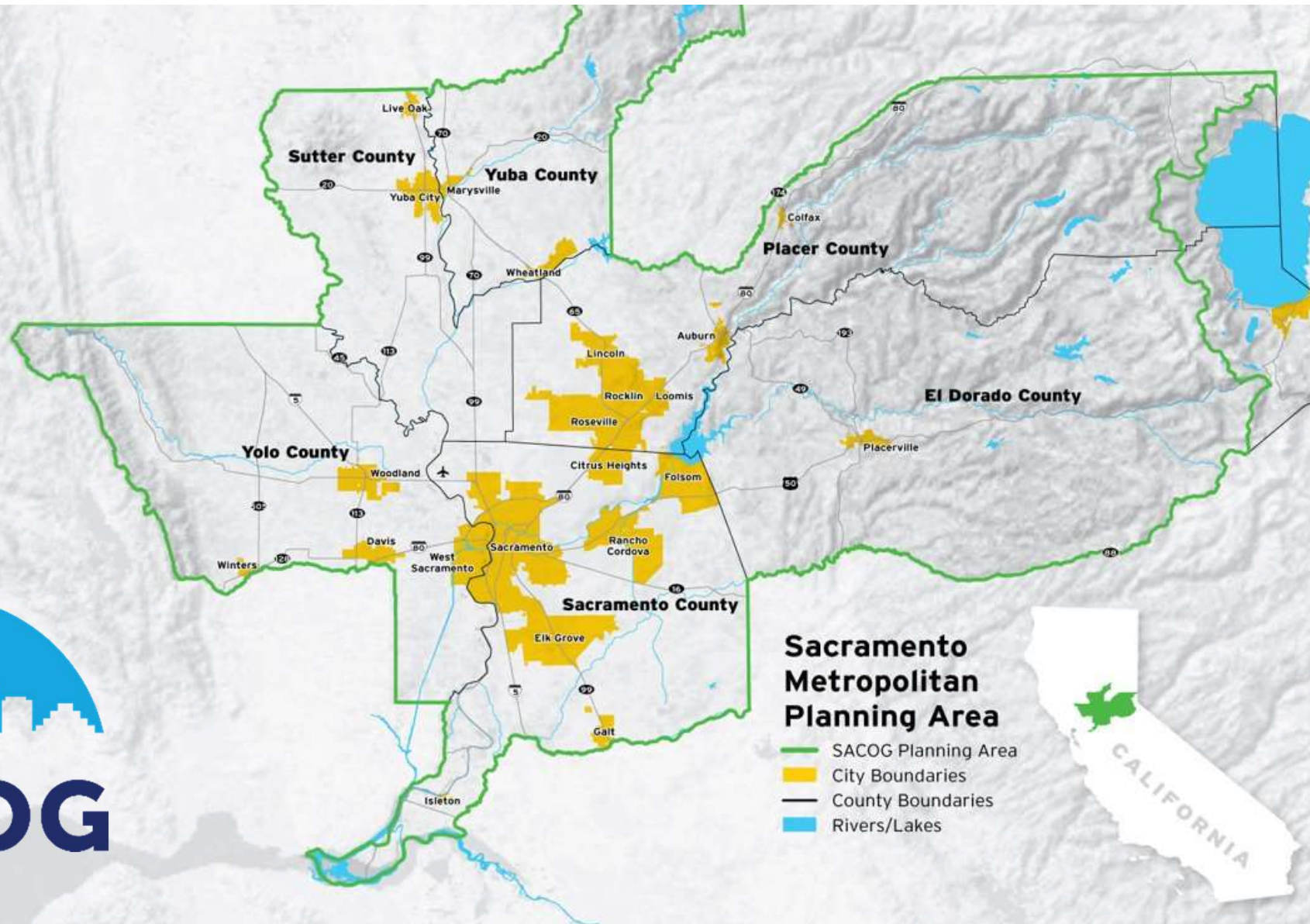


BLUEPRINT





Triple Bottom Line Framework



Equity



Economy



Environment



What We've Heard

Themes From Outreach & Engagement



Outreach & Engagement



ENSURE ACCESS
AND OPPORTUNITY
FOR ALL RESIDENTS



PROVIDE HOUSING
OPTIONS FOR ALL
INCOMES AND LIFE STAGES



CREATE COMPLETE
COMMUNITIES



INVEST IN
EXISTING COMMUNITIES



SUPPORT SAFE
AND CONVENIENT
TRANSPORTATION OPTIONS



PREPARE FOR NATURAL
DISASTERS TO PROTECT
PEOPLE AND PROPERTY



PROTECT AND
CONSERVE OPEN
SPACE AND AGRICULTURE



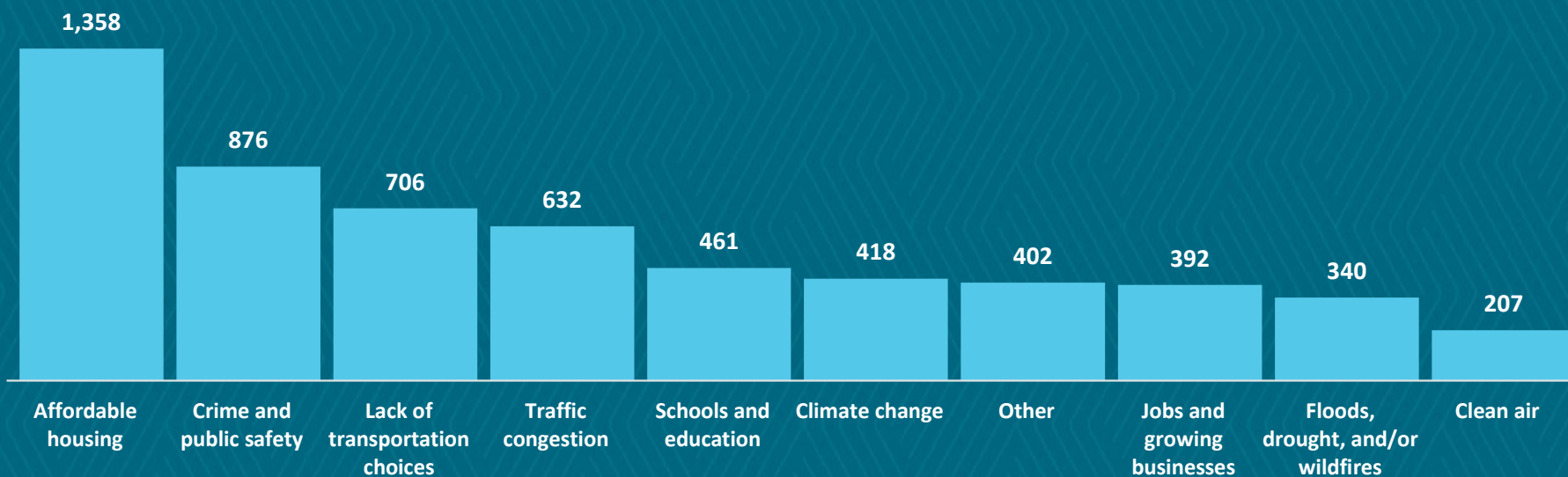
“I would love a robust, clean, safe public transportation system”



2023 SACOG Focus Groups

Provide Housing Options for all Incomes and Life Stages

What are the biggest challenges your community is facing?



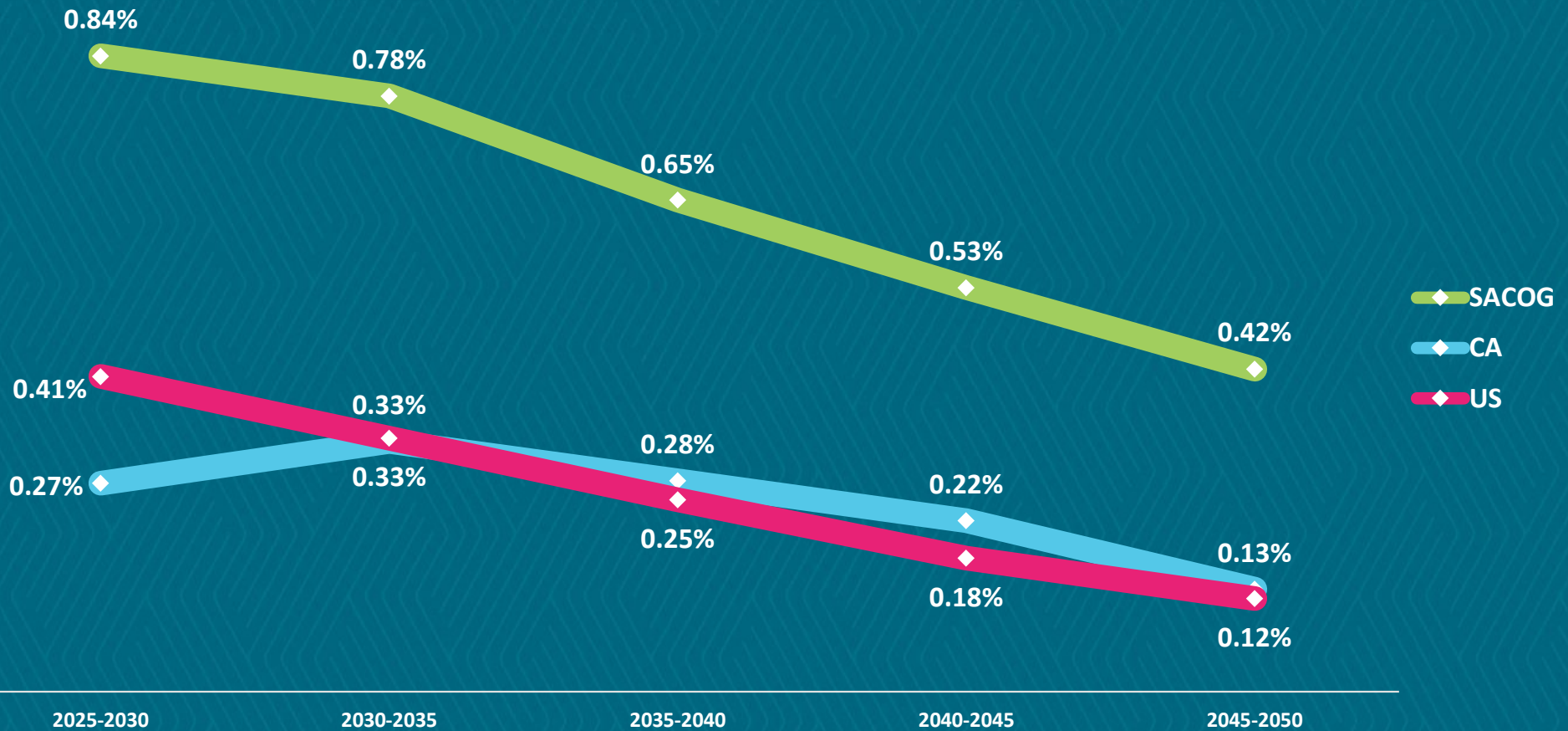
2023 SACOG led Survey



What We've Learned

Technical Analysis

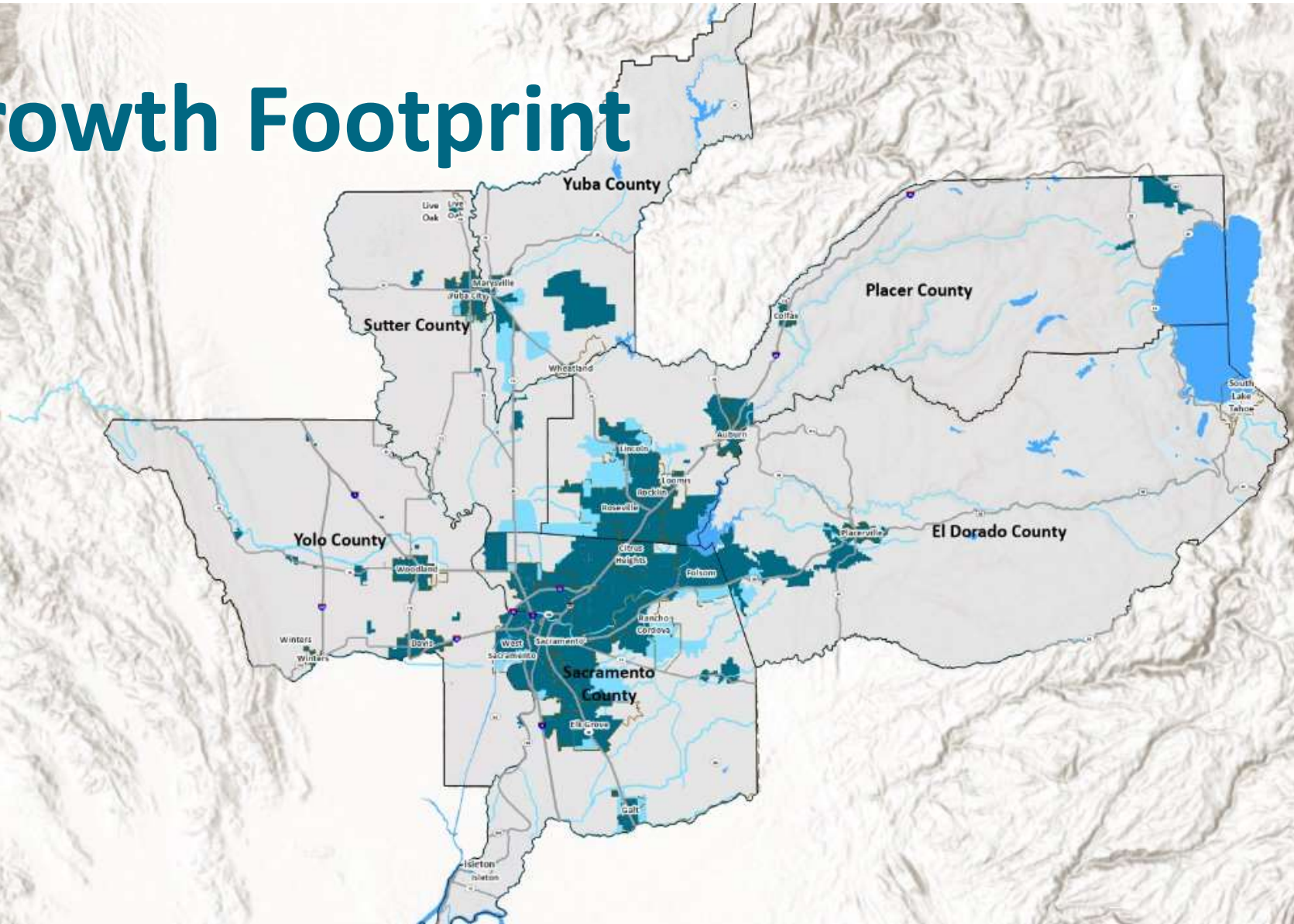
Average Annual Population Growth



Growth Forecast

	Region		Yolo County	
	2020	Change, '20-'50	2020	Change, '20-'50
Population	2,500,000	+600,000	25,600	+4,500
Jobs	1,170,000	+260,000	21,300	+2,400
Housing Units	945,000	+278,000	7,900	+600

Growth Footprint





Where We're Going

Transportation and Regional Programs

Blueprint in Yolo County



Transportation



Addressing Transportation Challenges

- Prioritize **maintenance and repair**
- Prioritize lower cost and **quicker** projects
- Prioritize **safety** projects

BOARD



Implementation Strategy Discussions



Release Blueprint and EIR for Public Review



Review Final Draft Plan



Plan Adoption and Certification of the EIR



STAFF

Drafting of Blueprint Plan and EIR documents continued

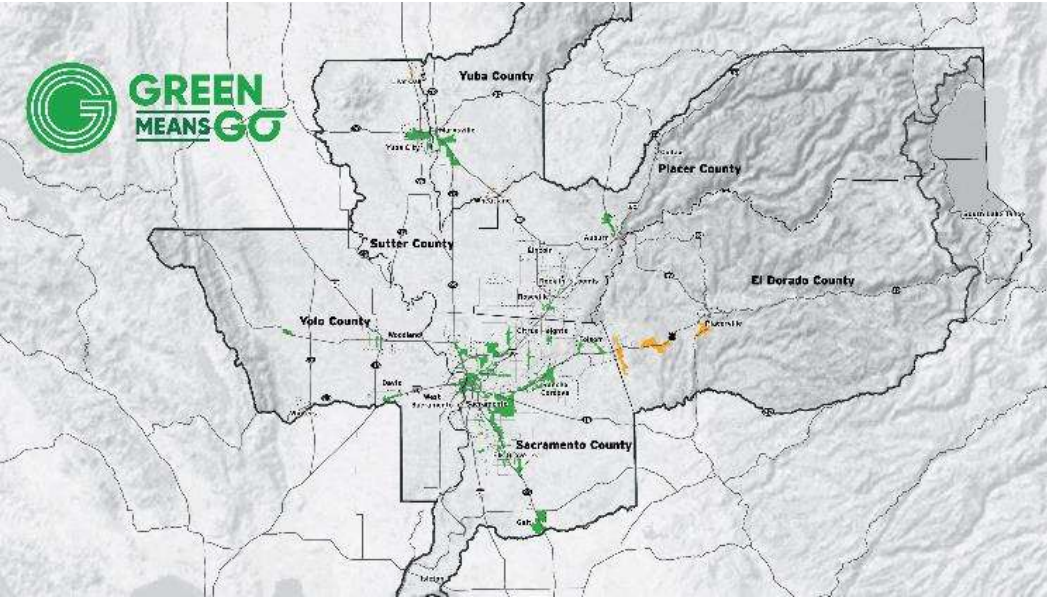
Blueprint and EIR public review period

Response to public comments

Submission of Blueprint to State and Federal Regulators

Submission of SCS to California Air Resources Board

2025



Ready, Set,
TRAILS!
VISION FOR A CONNECTED
SACRAMENTO REGION

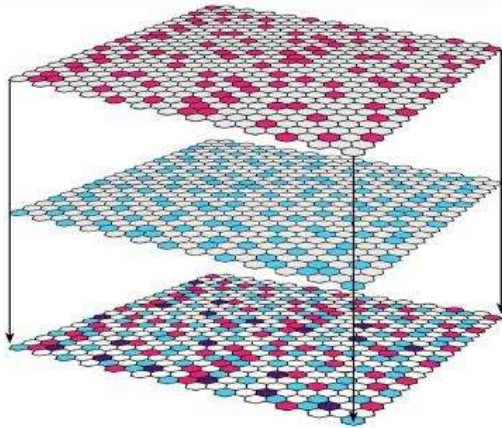


MOBILITY ZONES

Areas with equity needs

Areas with transportation needs and opportunities

Areas that could be a Mobility Zone



Implementation: 2025-2027



- ★ City of Marysville
Marysville Chinese Community Inc.
- ★ City of Woodland
New Hope Community Dev. Corp.
- ★ City of Sacramento
Food Literacy Center
- ★ Sutter & Yuba Counties
Yuba-Sutter Economic Development Corporation
- ★ City of Roseville
Health Education Council
- ★ City of Sacramento
Mutual Assistance Network + GNNA, CLTR, GSUL
- ★ Sacramento County
Mutual Assistance Network
- ★ Yolo County
RISE Inc. & Health Education
- ★ El Dorado County
El Dorado Community Foundation
- ★ Latino Leadership Council
- ★ United Way





**METROPOLITAN
TRANSPORTATION
COMMISSION**

**MEGA
REGION**
NORTHERN CALIFORNIA
WORKING GROUP



San Francisco

Sacramento

Stockton

SACOG
Sacramento to Roseville
Third Main Track - Phase 1

SACOG
I-5 Managed Lanes -
Sutterville Road to Yolo County Line

SACOG
Yolo I-80 and US 50 Managed Lanes

SACOG
Valley Rail Program includes
expansion of both ACE and the
San Joaquins Services

MTC
I-80 Westbound Cordelia Commercial
Vehicle Enforcement Facility
(Truck Scales)

MTC
Port of Oakland Community Impact
Reduction, Roundhouse Truck EV Charging
Infrastructure and Truck Parking

SJCOC
Passenger Rail Improvements

SJCOC
Interstate 205 Managed Lanes Project

SJCOC
State Route 99/120 Interchange
Project (Phase 1A & 1B)

MTC
Valley Link Buildout

SJCOC
Central Valley Gateway Project

MTC
Capitol Corridor: South Bay Connect



Funding round

Time for Teamwork



Time for Teamwork

