

Housing

# July 2024 - March 2025 Yolo County Report

## 2.1.1

Yolo County

Utility Assistance

Income Support/Assistance

Food/Meals

Individual, Family and C...

Legal, Consumer and Public Safety Services

Information Serv...

Clothing/Perso...

Transportation

Health Care

Disaster Services

Other Governme...

Mental Health/Substance Use Disorders

Employment

Volu...

Education

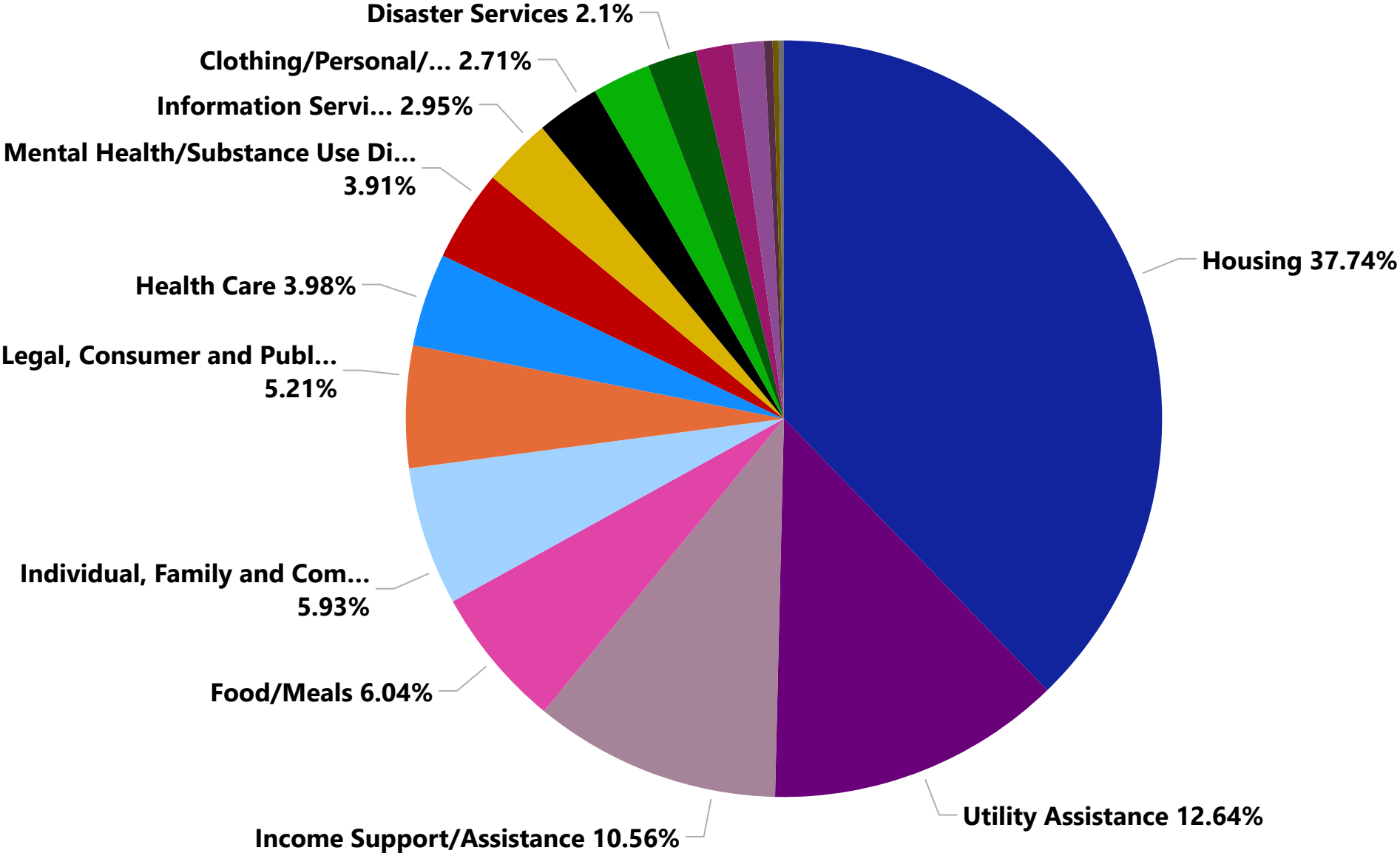
Arts, Cul...

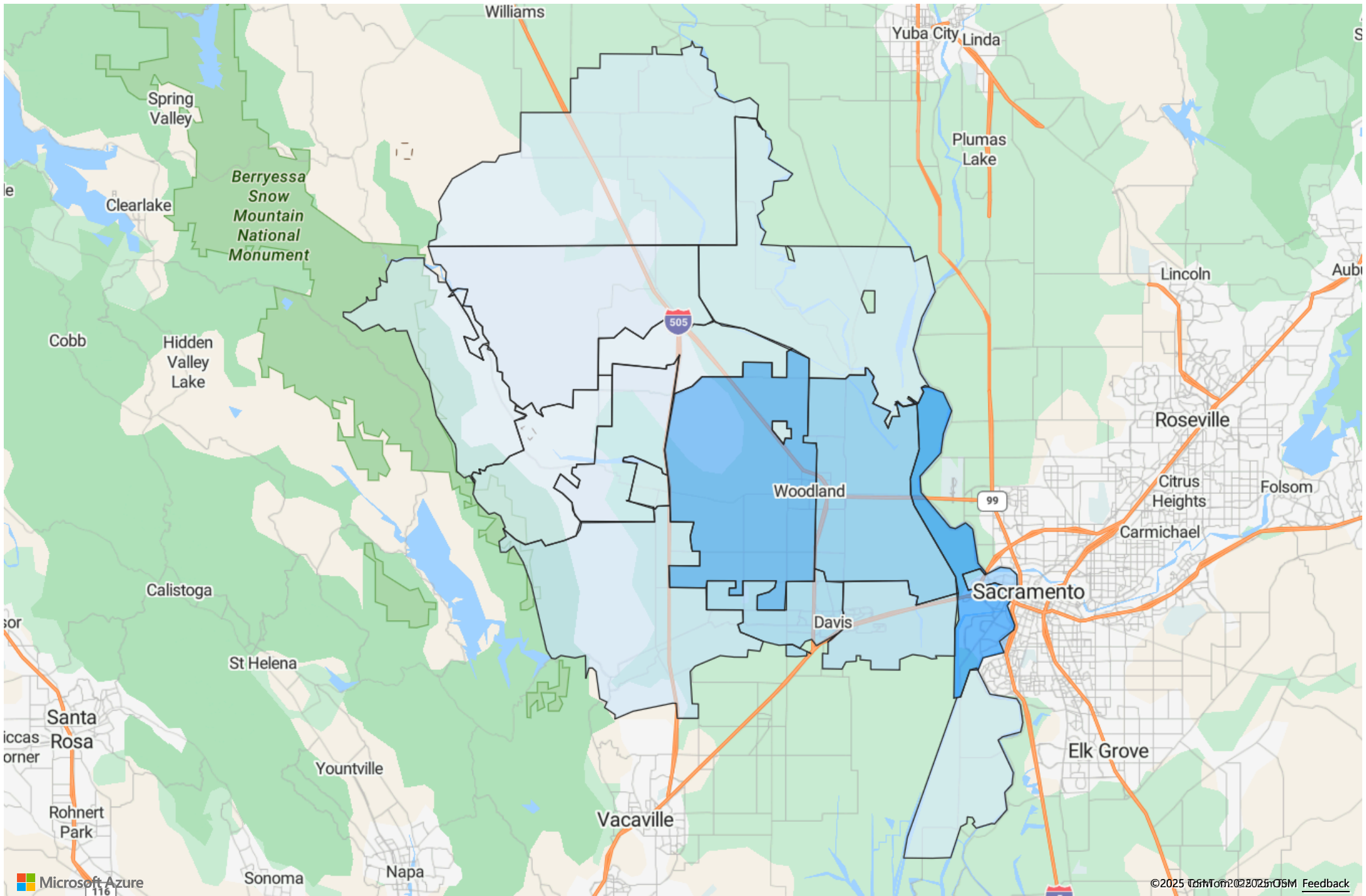
# Yolo County Needs Breakdown

July 2024 - March 2025  
Call Volume

**5,826**

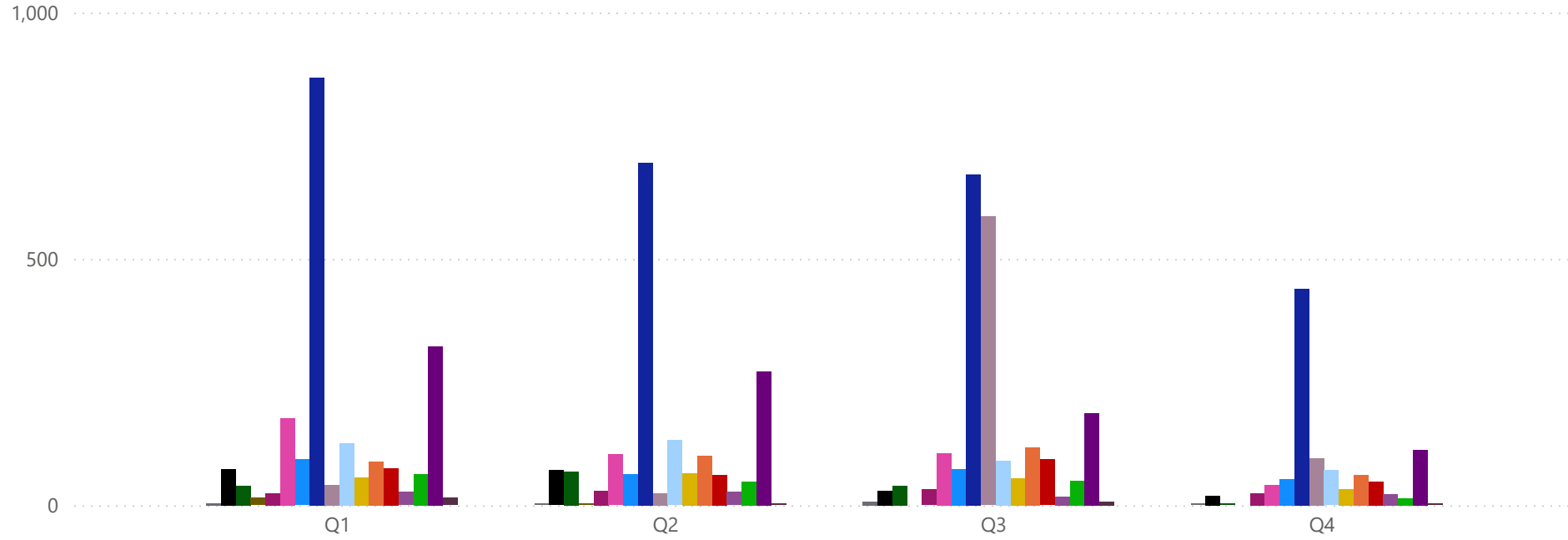
Answered



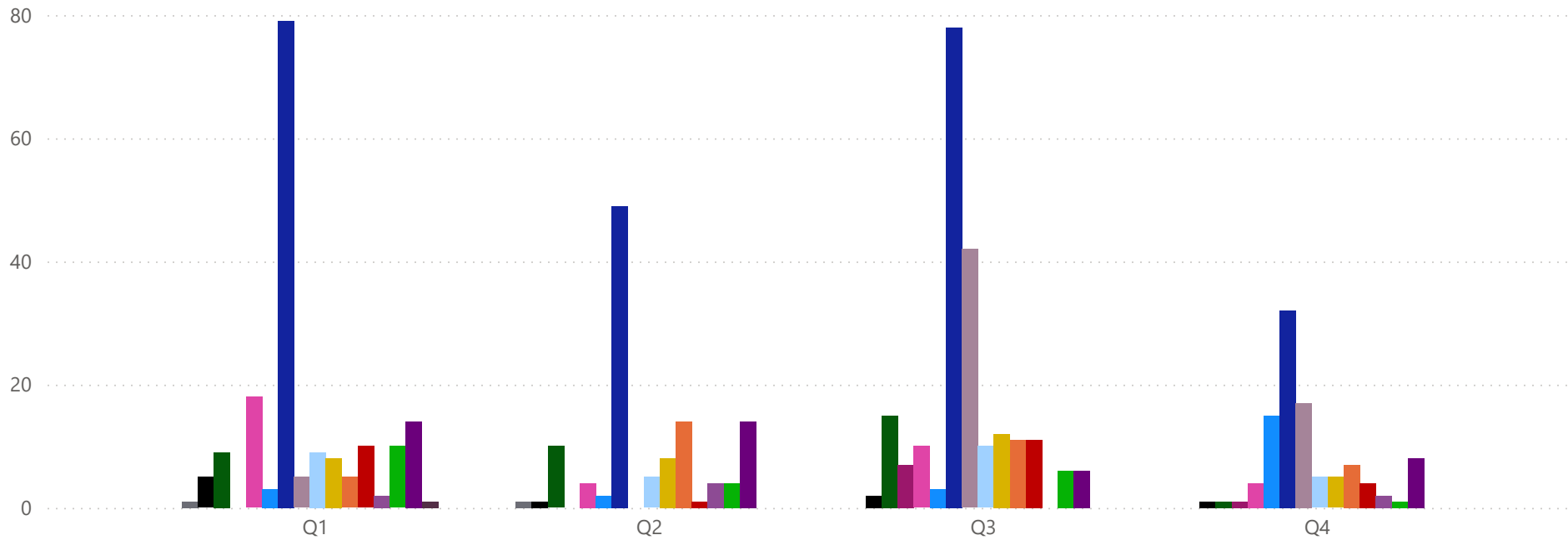


PostalCode	Count
95691	833
95695	627
95776	371
95605	333
95616	243
95618	153
95694	78
95627	38
95937	18
95645	8
95697	7
95612	6
95653	6
95607	5
95637	4
95698	3
95606	1
95912	1

## Countywide Needs



## Unincorporated Needs



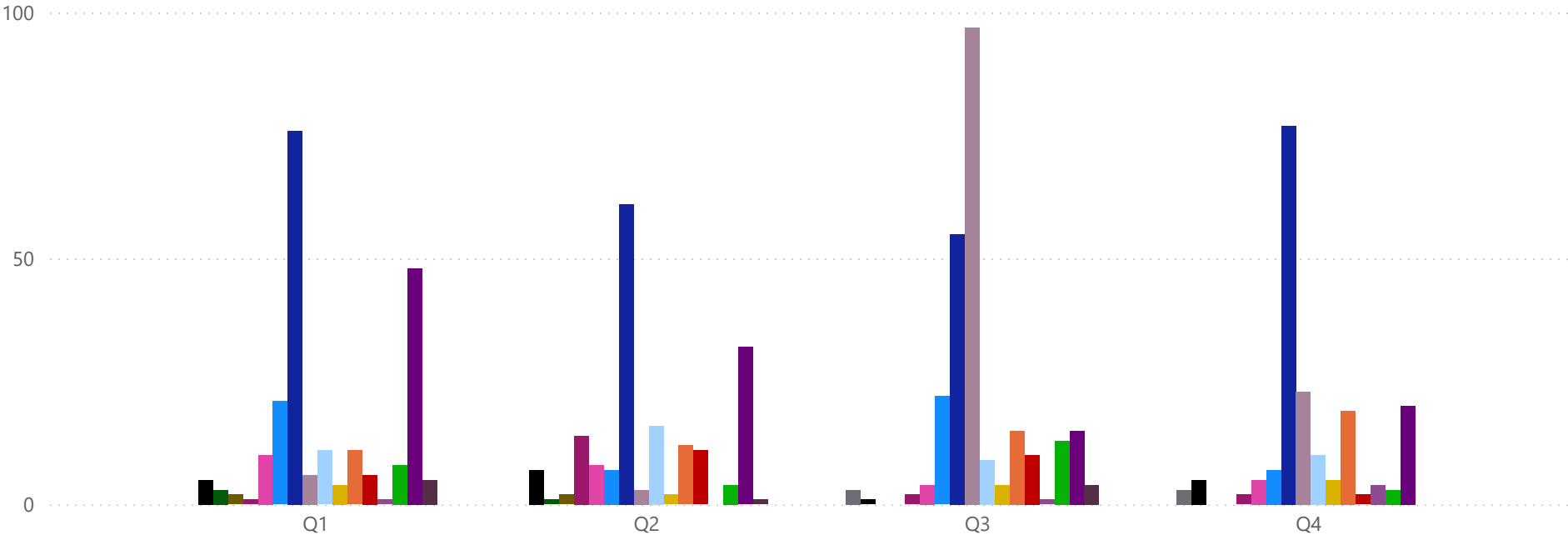
### AIRSNeedCategory

- Arts, Culture and Recreation
- Clothing/Personal/Household Needs
- Disaster Services
- Education
- Employment
- Food/Meals
- Health Care
- Housing
- Income Support/Assistance
- Individual, Family and Community ...
- Information Services
- Legal, Consumer and Public Safety ...
- Mental Health/Substance Use Disor...
- Other Government/Economic Servi...
- Transportation
- Utility Assistance
- Volunteers/Donations

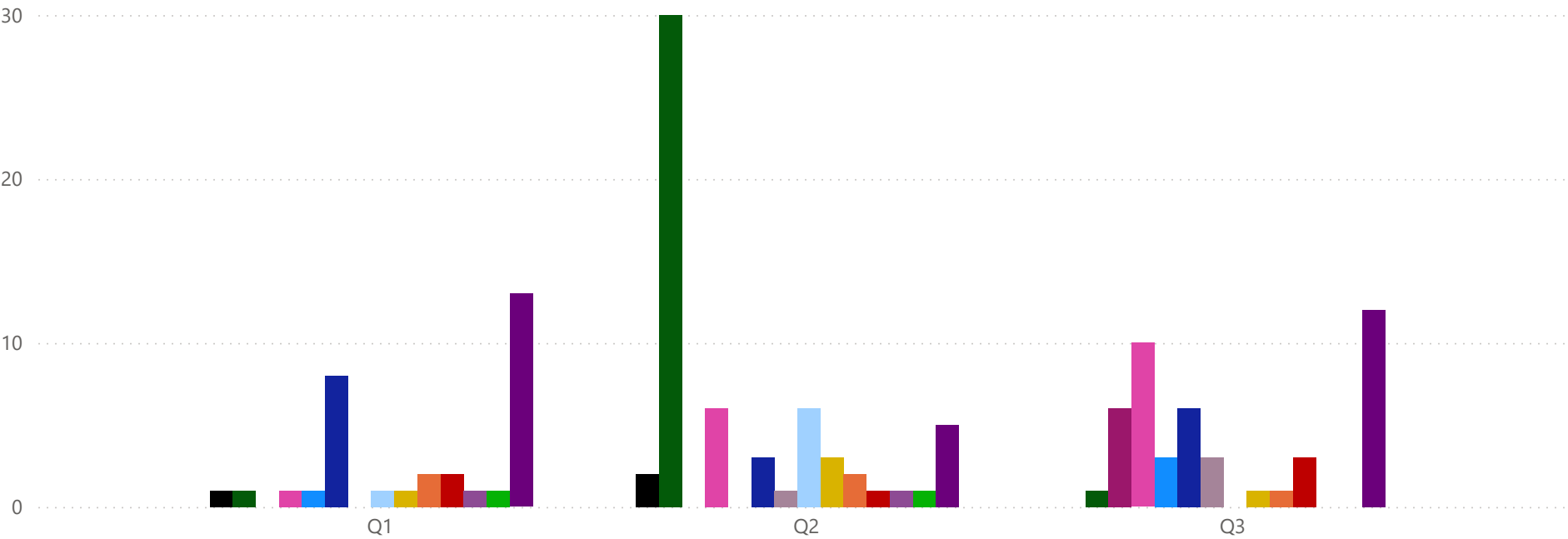
\*Q4 only includes Apr & May



### Davis Needs



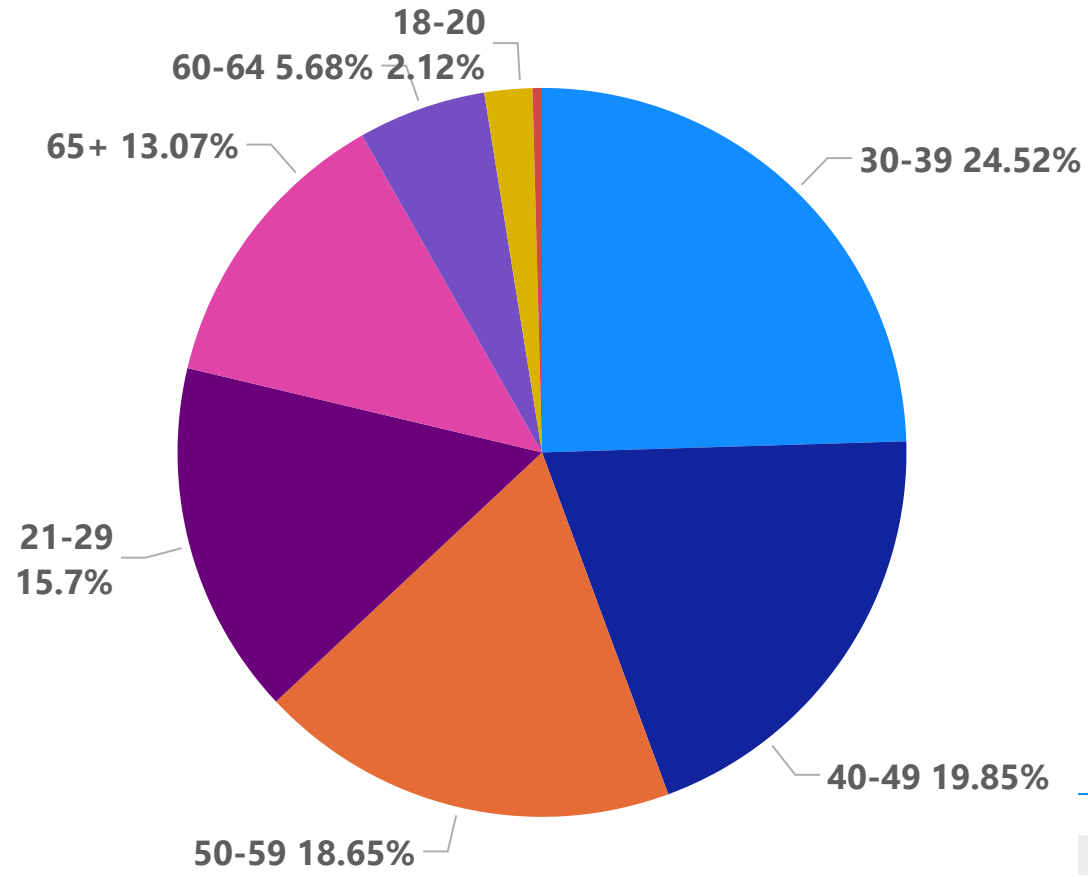
### Winters Needs



- AIRSNeedCategory**
- Arts, Culture and Recreation
  - Clothing/Personal/Household Needs
  - Disaster Services
  - Education
  - Employment
  - Food/Meals
  - Health Care
  - Housing
  - Income Support/Assistance
  - Individual, Family and Community ...
  - Information Services
  - Legal, Consumer and Public Safety ...
  - Mental Health/Substance Use Disor...
  - Other Government/Economic Servi...
  - Transportation
  - Utility Assistance
  - Volunteers/Donations

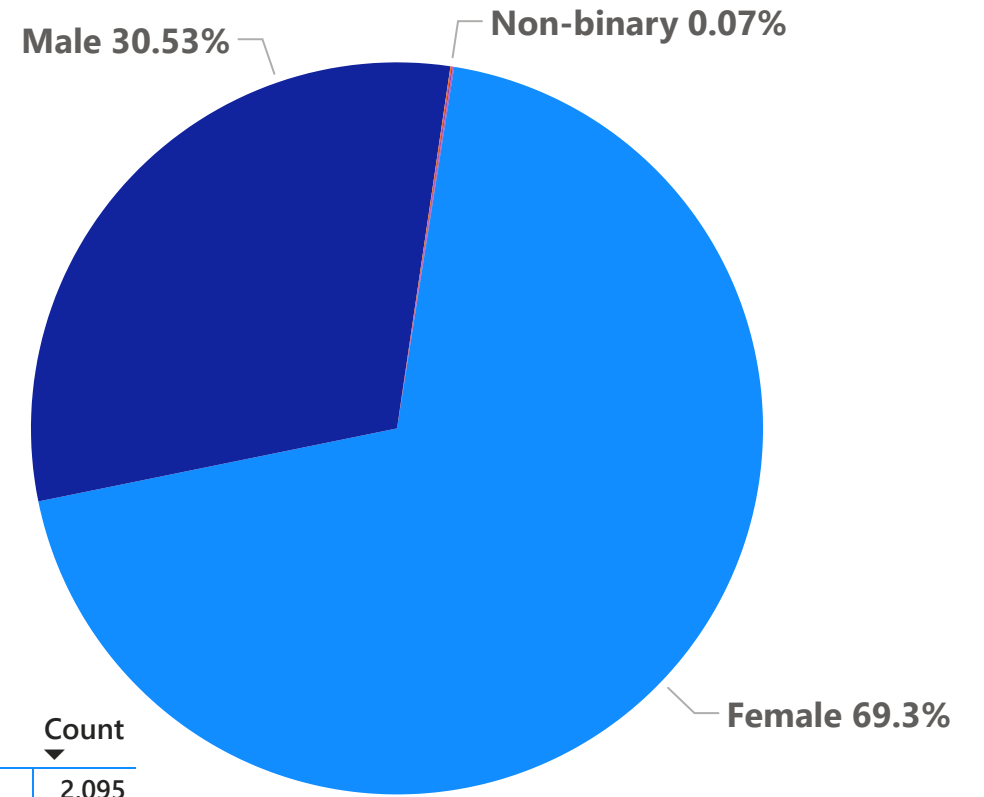
**\*Q4 only includes Apr & May**

## Age



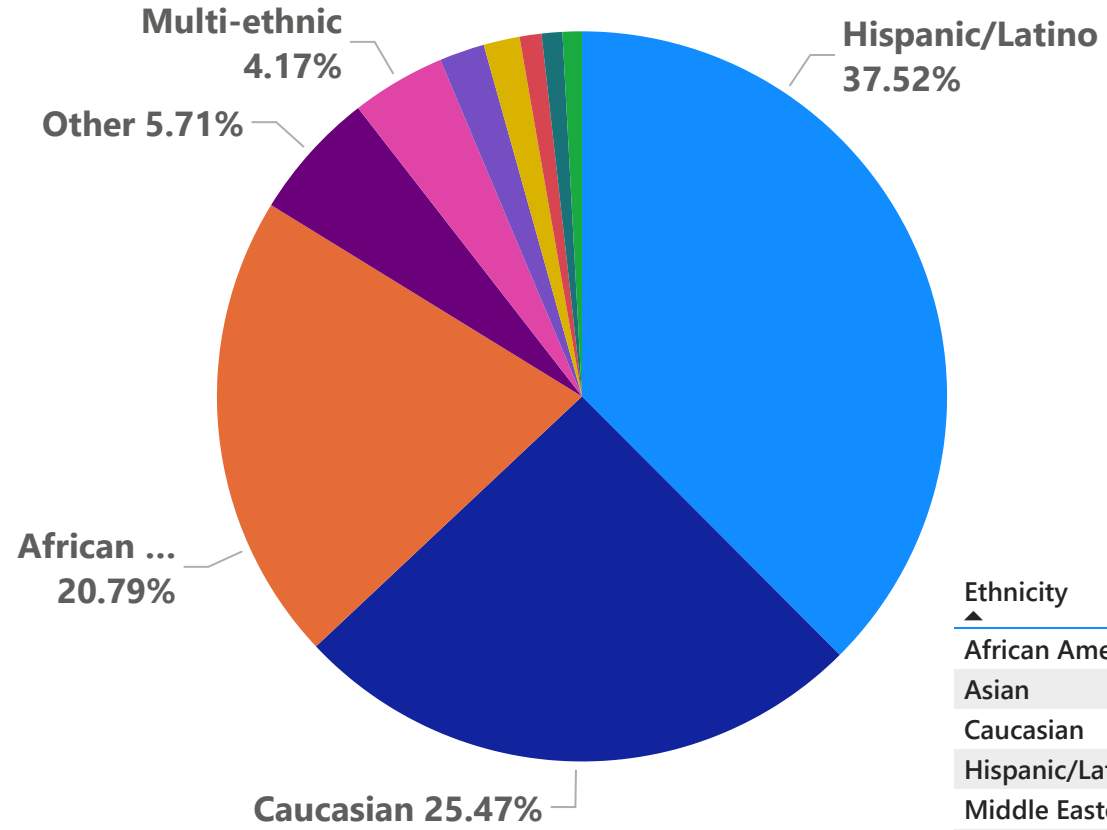
Age	Count
0-17	9
18-20	46
21-29	340
30-39	531
40-49	430
50-59	404
60-64	123
65+	283
<b>Total</b>	<b>2,166</b>

## Gender



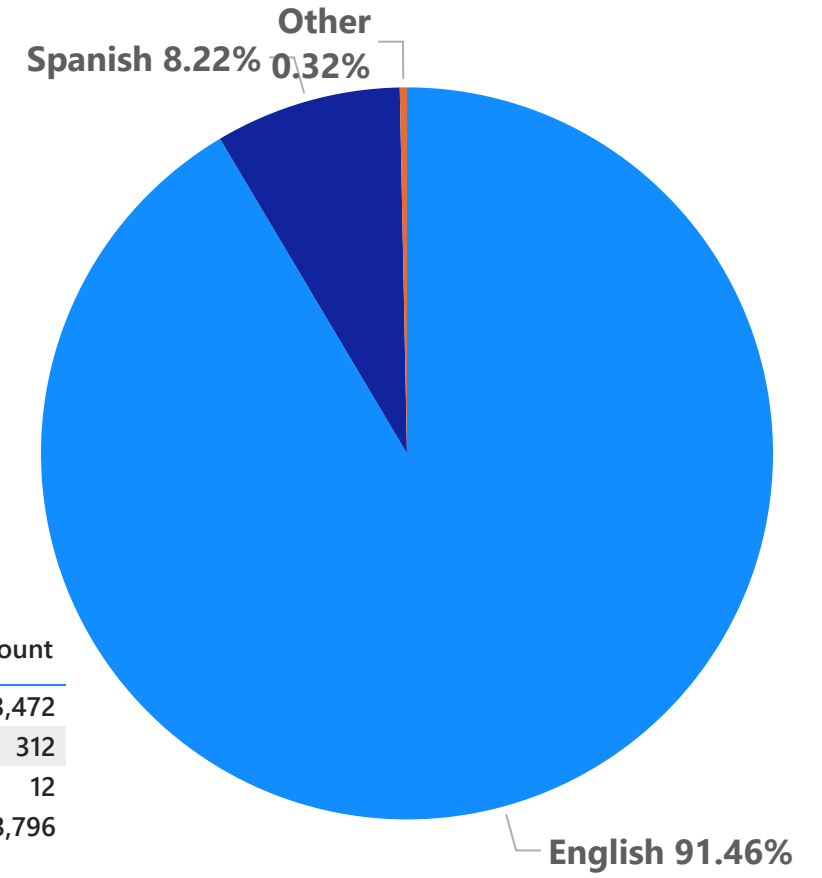
Gender	Count
Female	2,095
Male	923
Non-binary	2
Intersex	1
Trans Female	1
Trans Male	1
<b>Total</b>	<b>3,023</b>

## Ethnicity



Ethnicity	Count
African American/Black	364
Asian	35
Caucasian	446
Hispanic/Latino	657
Middle Eastern	16
Multi-ethnic	73
Native American	28
Other	100
Pacific Islander/Native Hawaiian	15
Russian/Slavic	17
Total	1,751

## Language



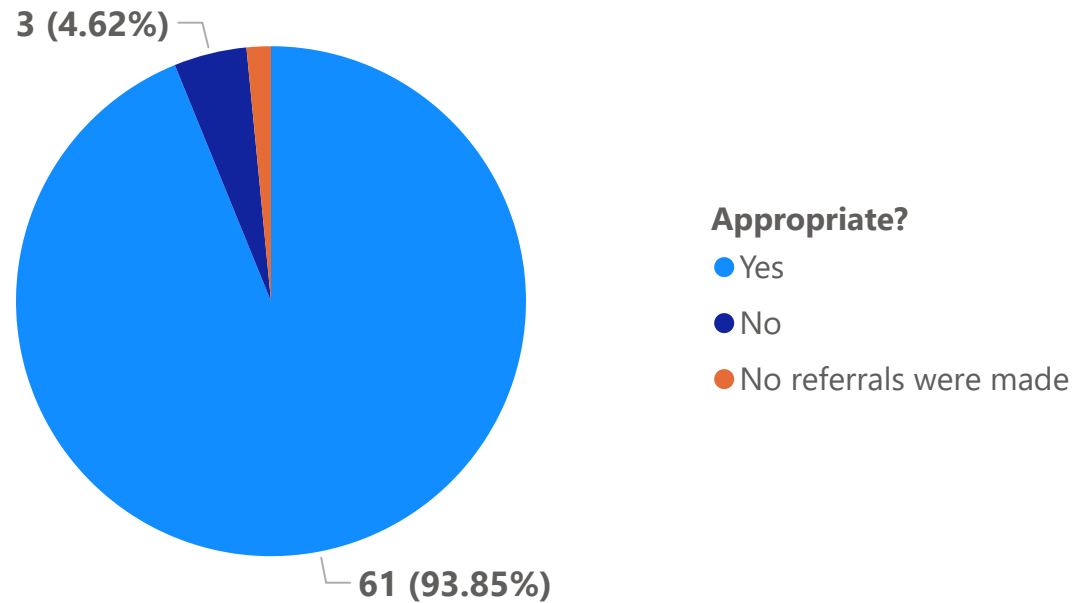
Language	Count
English	3,472
Spanish	312
Other	12
Total	3,796

Did you receive services from any of the referrals we gave you?	Count
Yes	38
No referrals were made	1
No	44
<b>Total</b>	<b>83</b>

Do you need further assistance?	Count
No	52
Yes	31
<b>Total</b>	<b>83</b>

If you didn't contact or were unable to receive services what was the reason?	Count
Havent tried	15
Other	9
Ineligible	4
Resource depleted	4
Unable to contact agency	4
Waiting list	4
No longer needs service	2
No program found to meet need	2
<b>Total</b>	<b>44</b>

Were the referrals you were given by 2-1-1 appropriate for your needs?



Was the information given to you by 2-1-1 accurate (phone #'s hours etc)?

