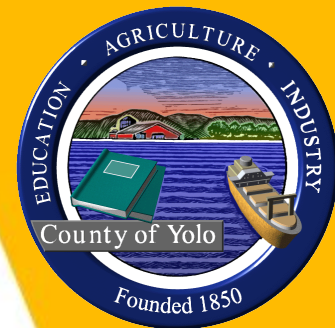


COUNTY ROAD 40 PUBLIC WORKS DIVISION UPDATE

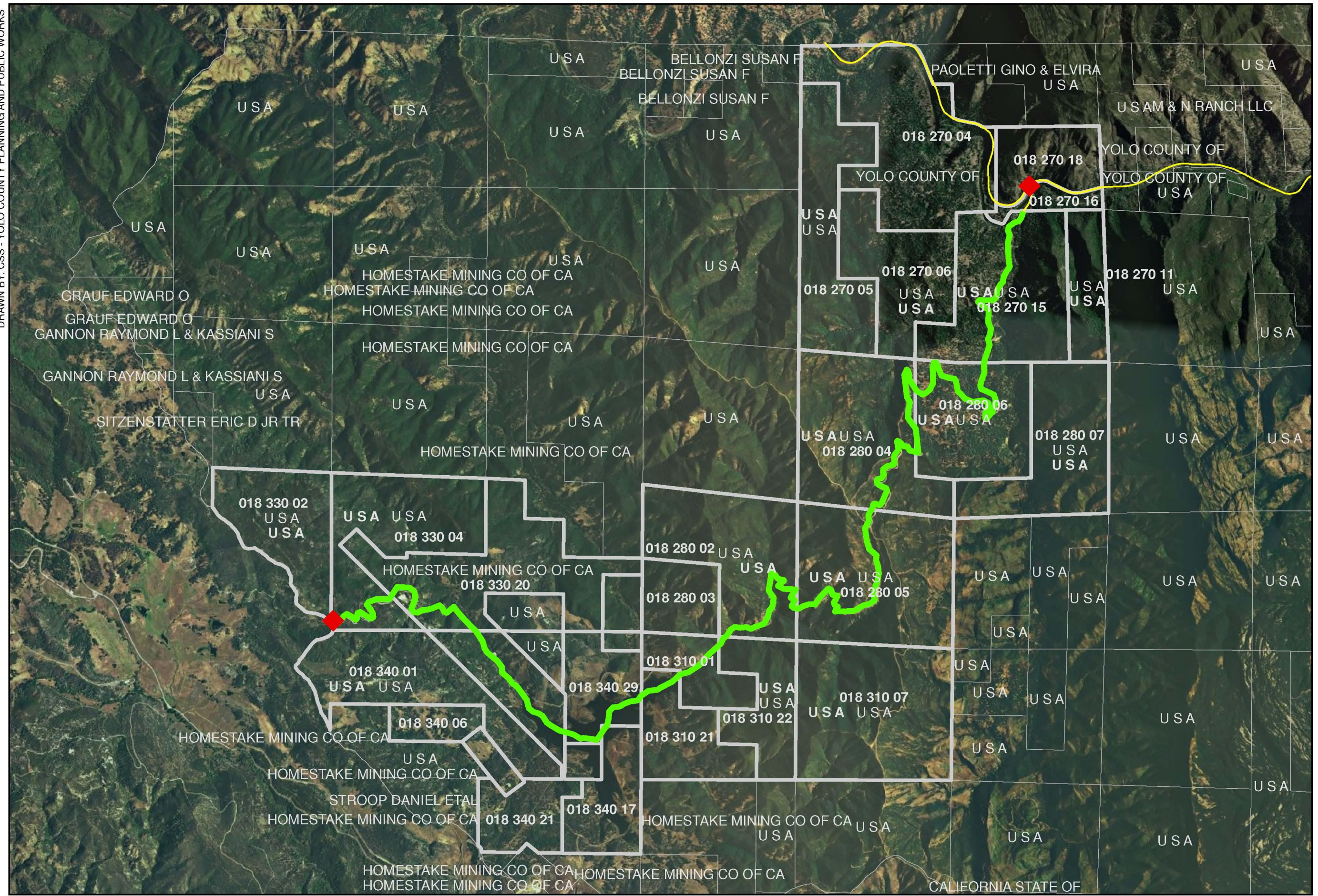
DEPARTMENT OF COMMUNITY SERVICES
TODD N. RIDDIOUGH, DIRECTOR OF PUBLIC WORKS




COUNTY ROAD 40 HISTORY

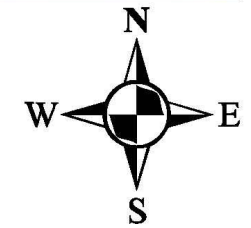
- Located between State Route 16 (east) and Lake County (west)
- Unpaved, gravel road, through rustic backcountry
- Was a county-maintained road for many decades
- In 2009, the Board of Supervisors ceased maintenance on the road as a cost saving measure
- The County only possesses right-of-way for a small section of the entire road length
 - About one mile at the Davis Creek Reservoir (west)
 - About 1/3-mile within the Cache Creek Regional Park Lower Site (east)
 - Remainder of road is within federal land and private property

DRAWN BY: CSS - YOLO COUNTY PLANNING AND PUBLIC WORKS



-  (E) GATES
-  PROPOSED ROADS TO END COUNTY MAINTENANCE

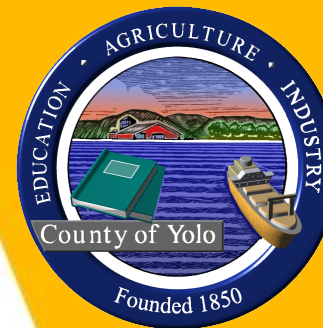
COUNTY ROAD 40



COUNTY ROAD 40 HISTORY

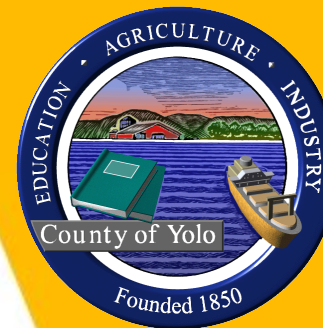
- Road has not been maintained by the County since 2009
- The failed Low Water Crossing over Cache Creek was closed in 2009
- In 2010, Board of Supervisors ceased maintenance on both of the gates
- Three instances of CalFire temporarily “bridging” Cache Creek for firefighting access

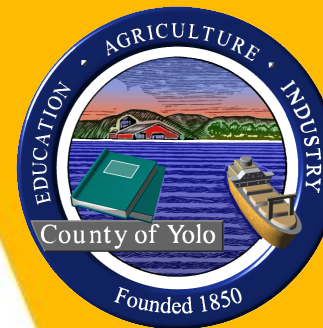




BRIDGE
CLOSED

01/11/2021 12:10







COUNTY ROAD 40 CURRENT STATUS

- CalFire/State supported and funded a bridge replacement project; completed 2022
- The new bridge's added height passes creek flows from typical storms, and normal upstream releases
- The State Route 16 gate is currently overseen by the Parks Division, and is normally locked
 - Pedestrian, equestrian, ATV access allowed
- The gate on the Lake County side is not maintained, and is normally left open
- The road between the Lake County gate and the Lower Site is not maintained (about 8 miles)

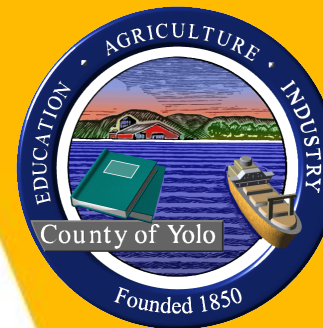




COUNTY ROAD 40 CURRENT STATUS

- April 5, 2023: Coordination meeting held with BLM, CalFire, Yolo County Sheriff, Yolo County Parks Division, and Yolo County Public Works to discuss the County Road 40 access situation following the new bridge opening
 - All agencies agreed that the State Route 16 gate should remain locked
- May 20, 2025: Meeting requested by CalFire with Yolo County CAO and Public Works staff to discuss County Road 40 status
 - CalFire will grade/clear portions of County Road 40 when necessary for their firefighting activities





QUESTIONS/DISCUSSION