



**Tuli Mem Aquatic Park
Maintenance and Operations
Assessment District Public Hearing
FY 2025-2026**

Department of General Services
Emily Huerta

Adopting the Annual Assessment

1

- 2/25/25 BOS approved Reso 25-14– Directed SCl to prep Draft ER

2

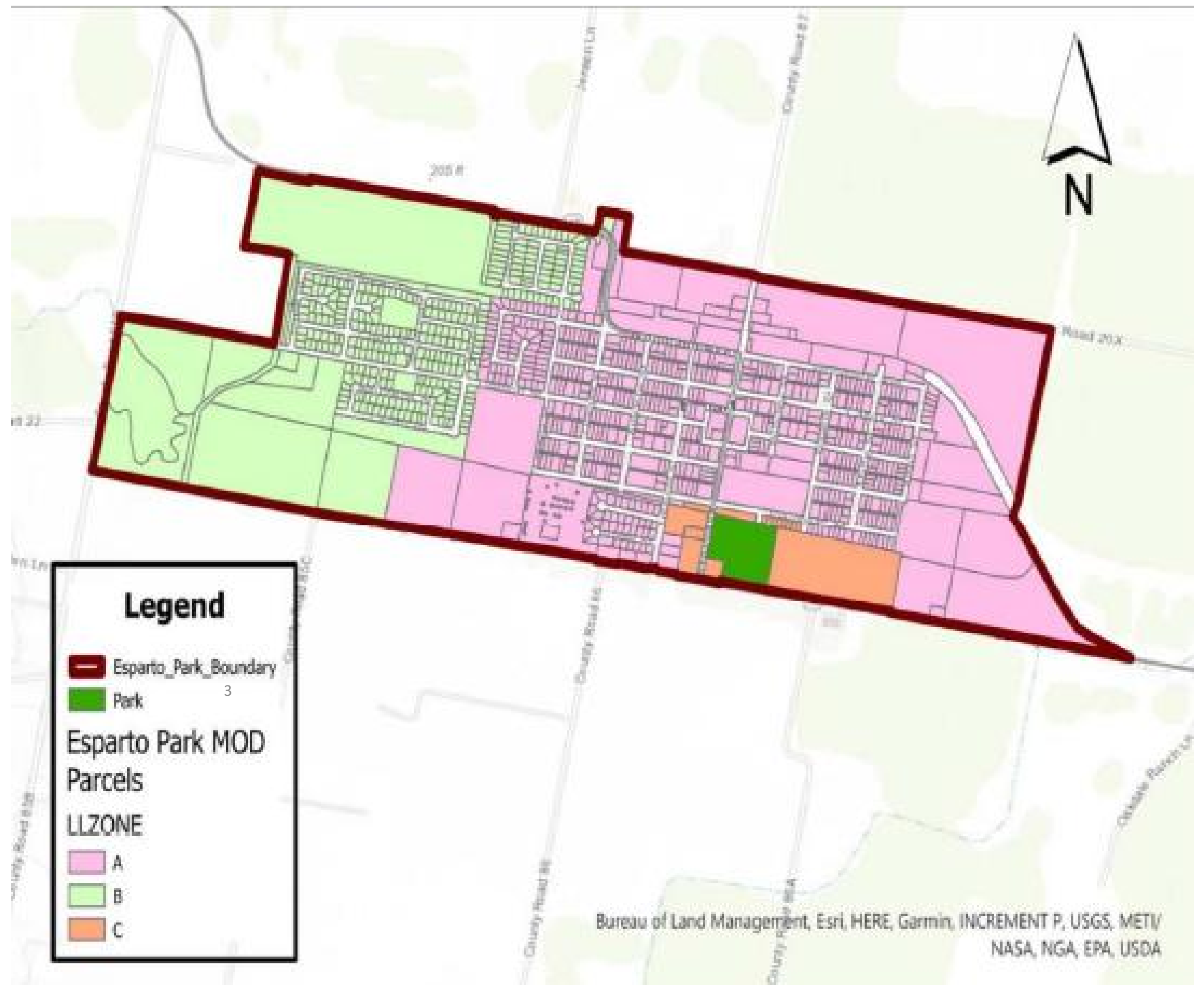
- 5/20/25 BOS approved Reso 25-28 – preliminary approval of ER and intent to order levy & provide notice of hearing

3

- Public notice published June 14, 2025
- Public Hearing June 24th, 2025
- Adopt resolution continuing the levy of assessments for FY 2025-2026

District Boundary Map

- Each area receives special benefits to properties within the boundary
- Annual adjustment CPI –3% max





Proposed Assessment Rates

Zone	FY 18-19	FY 19-20	FY 20-21	FY 21-22	FY 22-23	FY 23-24	FY 24-25	FY 25-26
Zone A	\$78.38	\$80.72	\$83.14	\$85.28	\$87.84	\$90.46	\$93.18	\$95.98
Zone B	\$62.70	\$64.58	\$66.52	\$68.22	\$70.26	\$72.38	\$74.54	\$76.78
Zone C	\$78.38	\$80.72	\$83.14	\$85.28	\$87.84	\$90.46	\$93.18	\$95.98