

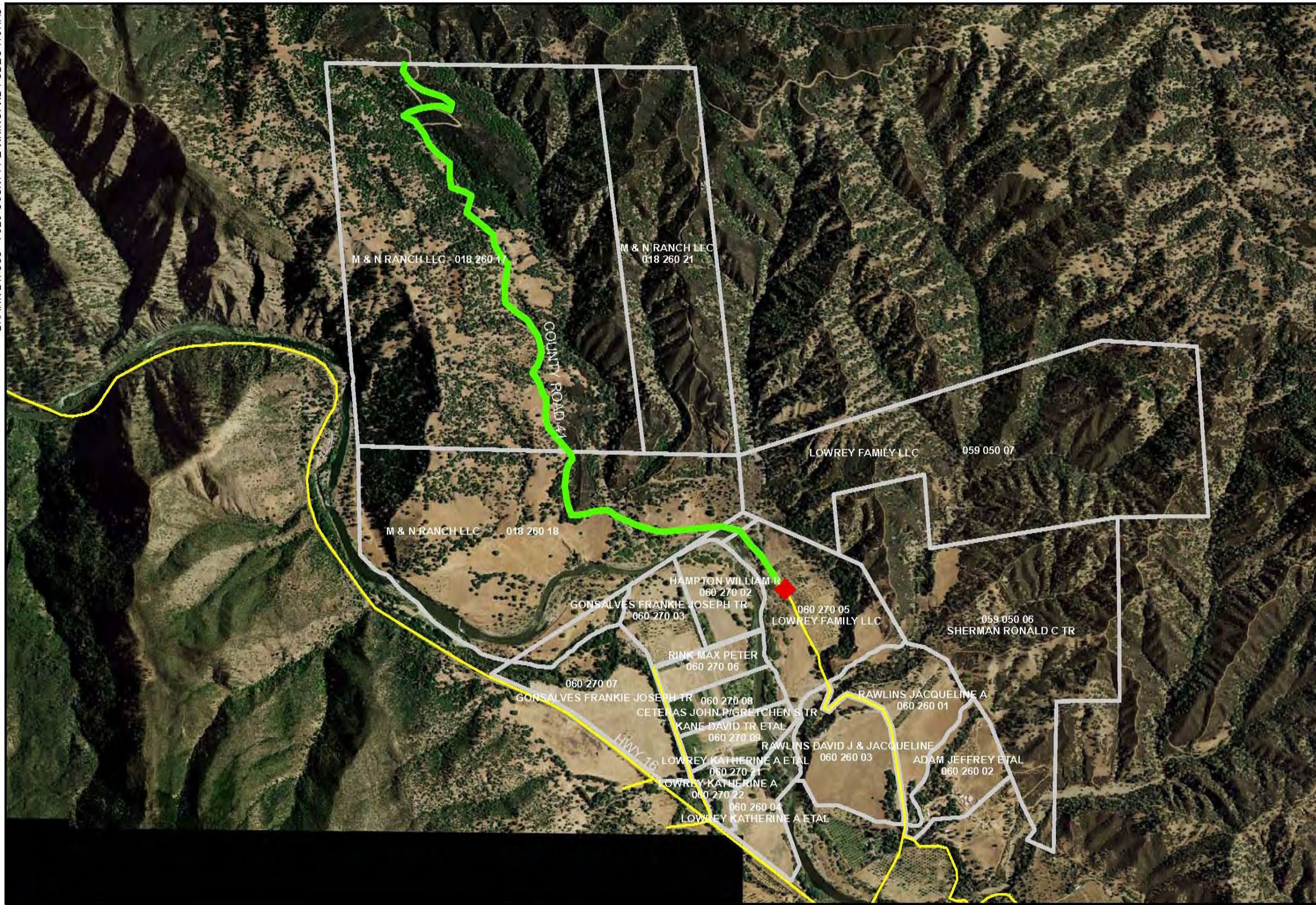
COUNTY ROAD 41 PUBLIC WORKS DIVISION UPDATE




DEPARTMENT OF COMMUNITY SERVICES
TODD N. RIDDIOUGH, DIRECTOR OF PUBLIC WORKS



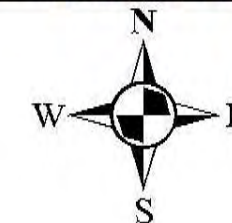
COUNTY ROAD 41 HISTORY

- Located between State Route 16 (west) and Colusa County (north)
- Paved road from State Route 16 (Rumsey) to the southernmost county gate
 - Includes Rumsey Bridge (CR41 Bridge over Cache Creek)
- Unpaved, gravel road, through rustic backcountry for the remaining 2 miles to the northernmost gate and the county line
- In 2009, the Board of Supervisors ceased maintenance on the road section between the two gates as a cost saving measure
- In 2010, Board of Supervisors ceased maintenance on both of the gates
- The Yocha Dehe Wintun Nation operates and maintains both gates
- In 2015, the Board of Supervisors selected the strategy to replace the structurally deficient Rumsey Bridge with a modern concrete bridge (the only access to properties on the east side of Cache Creek near Rumsey)



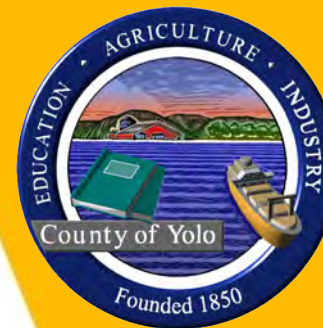
-  (E) GATES
-  STRUCTURE
-  PROPOSED ROADS TO END COUNTY MAINTENANCE

COUNTY ROAD 41









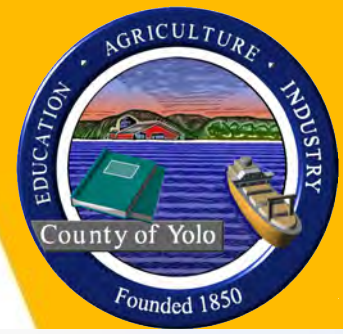
COUNTY ROAD 41 HISTORY



- In 2017, a portion of the unpaved road section and road shoulder began to wash out at a bend in Cache Creek
- County requested that the two gates remain locked due to the washout



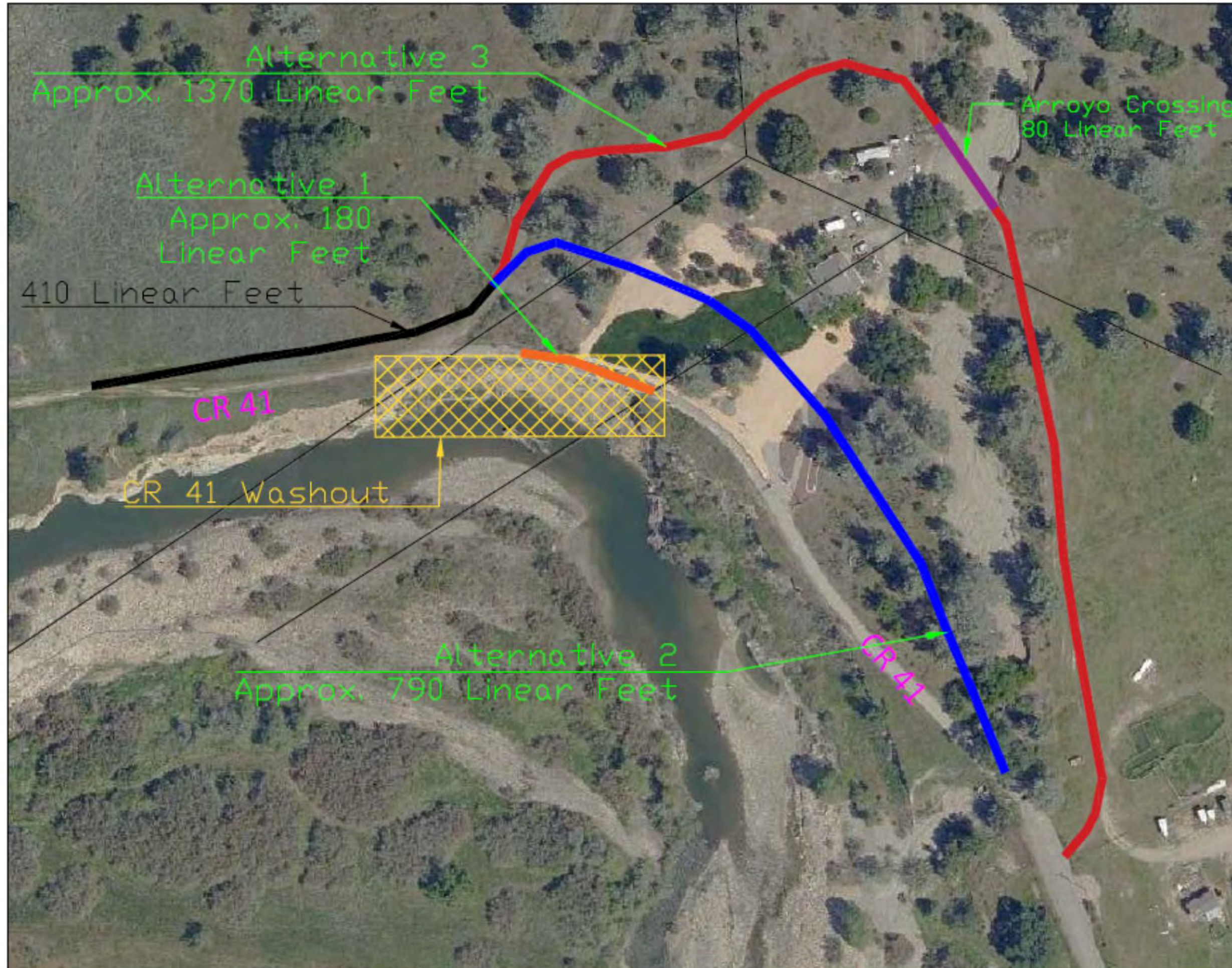
COUNTY ROAD 41 HISTORY



- By 2019, several hundred feet of the road was washed out
- In 2021, the Board of Supervisors directed Public Works to pursue design of an alternative road alignment to reestablish road connectivity.
- There was limited Road Contingency funding available to evaluate the alignment alternatives and provide a 90% level design.
 - Right-of-way acquisition stalled due to the main property going into foreclosure
- Public Works staff applied for the “2021 County Evacuation Route Grant” offered by the State, but was not awarded funds



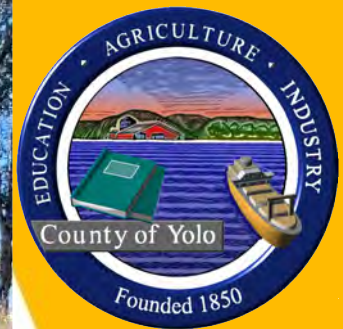
ALTERNATIVES MAP

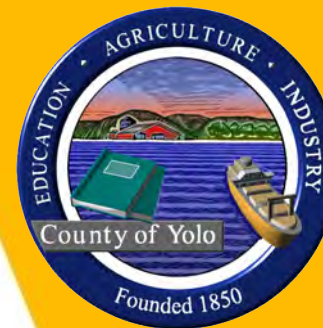


COUNTY ROAD 41 CURRENT STATUS

- The road section between the gates (about 2 miles) is not maintained
- Both gates remain locked
- No funding has been identified to finish the design, acquire the necessary rights-of-way, or to fund construction of the washout realignment
- Rumsey Bridge replacement project has been designed and is on track for construction in 2026 and 2027
- The paved section of CR 41 up to the southernmost gate is being improved with the 2025 Pavement Preservation Project







COUNTY ROAD 41 CURRENT STATUS

- The Yolo County Office of Emergency Services (OES) has determined that CR 41 currently may not serve as a suitable evacuation route. The road faces challenges such as infrequent maintenance, washouts during heavy rains, and obstructions from fallen trees and debris, which can compromise safe passage. Emergency evacuation plans are adaptable and will utilize the most secure and accessible routes available at the time.
- Viability of this route as a possible egress would also depend upon Colusa County maintaining their section of the remaining “Arbuckle Grade”; there are other wash crossings past Yolo County



QUESTIONS/DISCUSSION



03/01/2019