

YOLO COUNTY CENTRAL LANDFILL

CONSTRUCTION DRAWINGS

WMU 7J BASE GRADING PLAN

SHEET NUMBER	TOTAL SHEETS
1	6

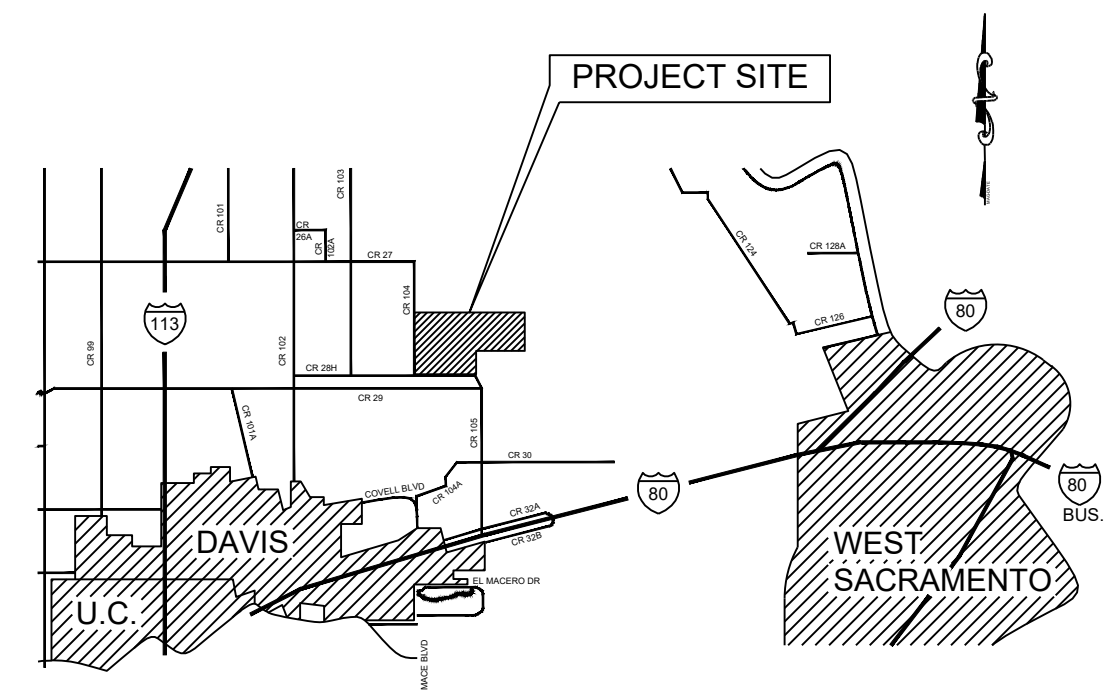


STATE OF CALIFORNIA

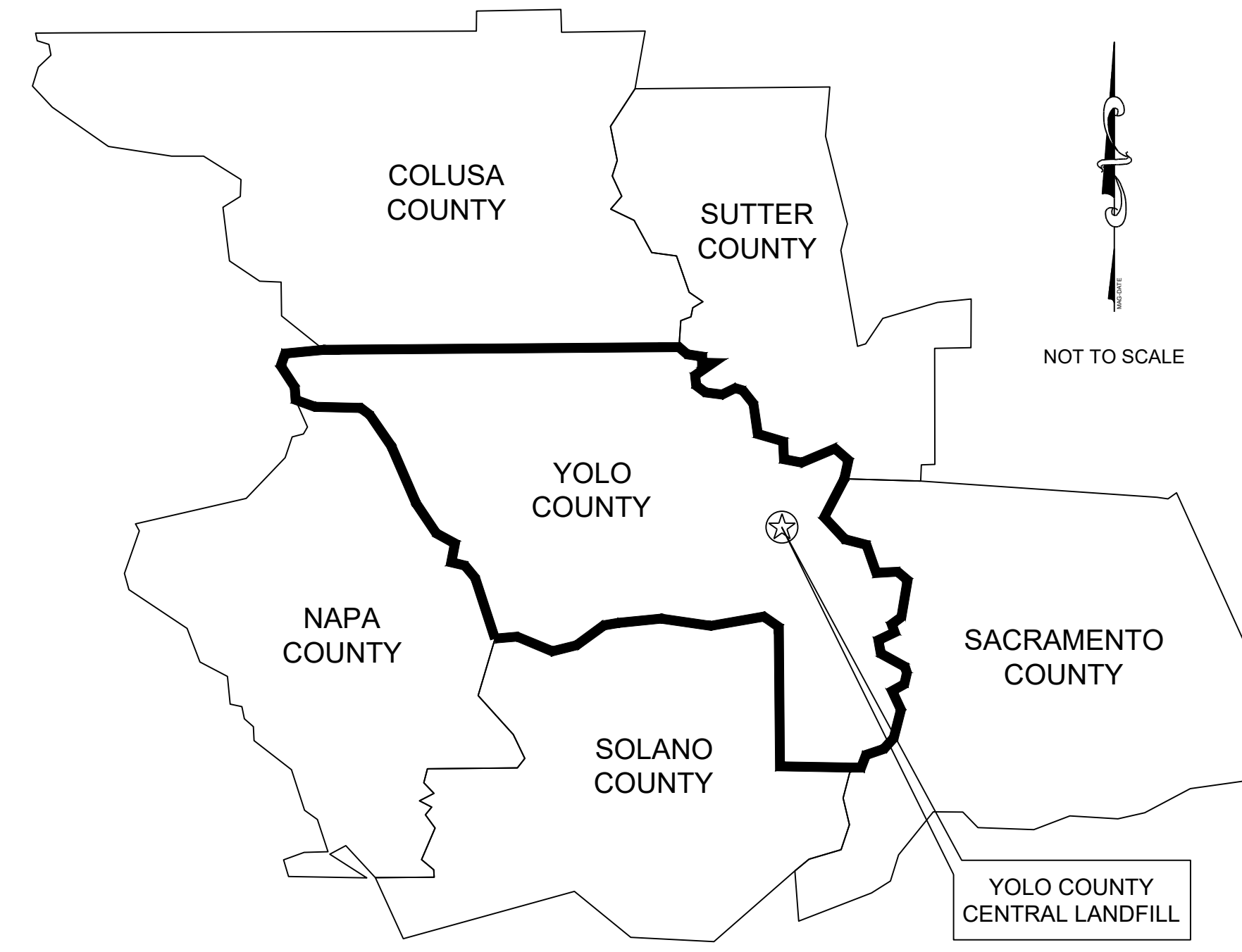
BY



SACRAMENTO OFFICE
1000 ENTERPRISE WAY, SUITE 190
ROSEVILLE, CA 95678
(916) 786-2424



VICINITY MAP
NOT TO SCALE



REGIONAL MAP

DETAIL IDENTIFICATION LEGEND

- PROPERTY BOUNDARY
- APPROXIMATE EXISTING MODULE LIMIT
- SLOPE INDICATOR
- GRADE INDICATOR
- SURVEY CONTROL POINT
- DETAIL/SECTION DESIGNATION
- DRAWING WHERE SECTION/DETAIL IS LOCATED
- DRAWING WHERE SECTION/DETAIL IS REFERENCED

INDEX OF DRAWINGS:

Sheet Number	Sheet Title
1	TITLE SHEET
2	SITE MAP
3	WMU 7J TOP OF SUBGRADE GRADING PLAN
4	CROSS-SECTIONS
5	TOP OF SUBGRADE CONTROL POINTS
6	BORROW AREA CONTROL POINTS

BASIS OF BEARINGS:

THE BEARINGS SHOWN HEREON ARE IN TERMS OF THE NORTH AMERICAN DATUM OF 1983 (NAD83), EPOCH 1999.50 PER THE YOLO COUNTY SUBSIDENCE NETWORK, BASED LOCALLY UPON GPS OBSERVATIONS TO STATIONS "COY-1" AND "UCD1". THE COORDINATES WERE SCALED BY AN AVERAGE COMBINATION FACTOR OF 1.00004588 TO OBTAIN GROUND COORDINATES AND DISTANCES. COORDINATES ARE EXPRESSED IN U.S. SURVEY FEET.

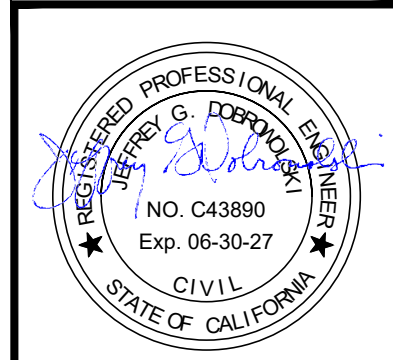
BASIS OF ELEVATION:

THE ELEVATIONS SHOWN HEREON ARE IN TERMS OF THE NORTH AMERICAN VERTICAL DATUM OF 1988 (NAVD88) PER THE YOLO COUNTY SUBSIDENCE NETWORK, EPOCH 1999.50, BASED LOCALLY UPON GPS OBSERVATIONS TO STATION "COY-1", ELEVATION=28.08'.

GENERAL NOTES:

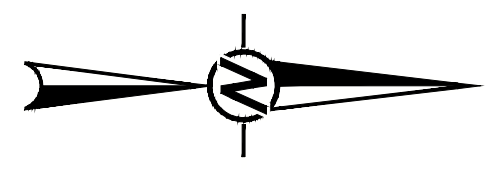
- CONTRACTOR RESPONSIBLE TO USA ALL UNDERGROUND UTILITIES BEFORE START OF CONSTRUCTION.
- CONTRACTOR SHALL PROTECT ALL EXISTING STRUCTURES (MONITORING WELLS, GAS LINES, ETC.) ALONG THE HAUL ROUTE. AT THE CONCLUSION OF CONSTRUCTION, CONTRACTOR SHALL REMOVE ALL ACCUMULATED SOIL FROM THE HAUL ROUTE PERMANENT ROADS, AND EXISTING DRAINAGE CHANNELS DUE TO SPILLAGE. PLACEMENT OF TEMPORARY RAMPS, OR OTHER CONSTRUCTION ACTIVITIES. ALL CHANNELS AND ROADS SHALL BE RESTORED TO THEIR ORIGINAL CONDITION.
- CONTRACTOR SHALL CLOSE CR104 FROM CR28H TO CR103 DURING CONSTRUCTION USING TYPE III BARRICADES AND DETOUR SIGNS. CLOSURE SHALL BE COORDINATED WITH COUNTY WITH 48 HOUR MINIMUM NOTICE.
- EXCAVATION IN THE BORROW AREA WILL BE RESTRICTED TO BETWEEN THE HOURS OF 4AM TO 11PM.
- CONTRACTOR SHALL BE AWARE THAT THERE IS THE POSSIBILITY OF EXPOSING BURIED CULTURAL RESOURCES INCLUDING NATIVE AMERICAN BURIALS. BRIEFINGS WILL BE PROVIDED TO CONTRACTOR'S SUPERVISORY PERSONNEL TO ALERT THEM TO THE NEED TO STOP EXCAVATION AT THE DISCOVERY AND THE PROCEDURES TO FOLLOW REGARDING PROTECTION AND NOTIFICATION OF THE COUNTY AND ARCHAEOLOGIST.
- THE PROPERTY WEST OF CR104 WAS USED IN THE PAST TO DISPOSE OF TOMATO CANNERY WASTE WATER BY UNDERGROUND SPRINKLER SYSTEM. CONTRACTOR IS RESPONSIBLE FOR REMOVING THAT PART OF THE SYSTEM WHICH ENTERS THE BORROW AREA PRIOR TO BORROWING. THE SYSTEM IS PVC IN THE BORROW AREA. CONTRACTOR WILL ENCOUNTER ASBESTOS CEMENT PIPE AND WILL NEED TO BE DISPOSED OF PROPERLY, NOT AT THE YOLO CENTRAL LANDFILL. CONTRACTOR IS CAUTIONED NOT TO RUN HEAVY EQUIPMENT OUTSIDE THE BORROW AREA TO AVOID DAMAGING THE REMAINING PART OF THE SYSTEM.

**NOT FOR CONSTRUCTION
ISSUED FOR BID**



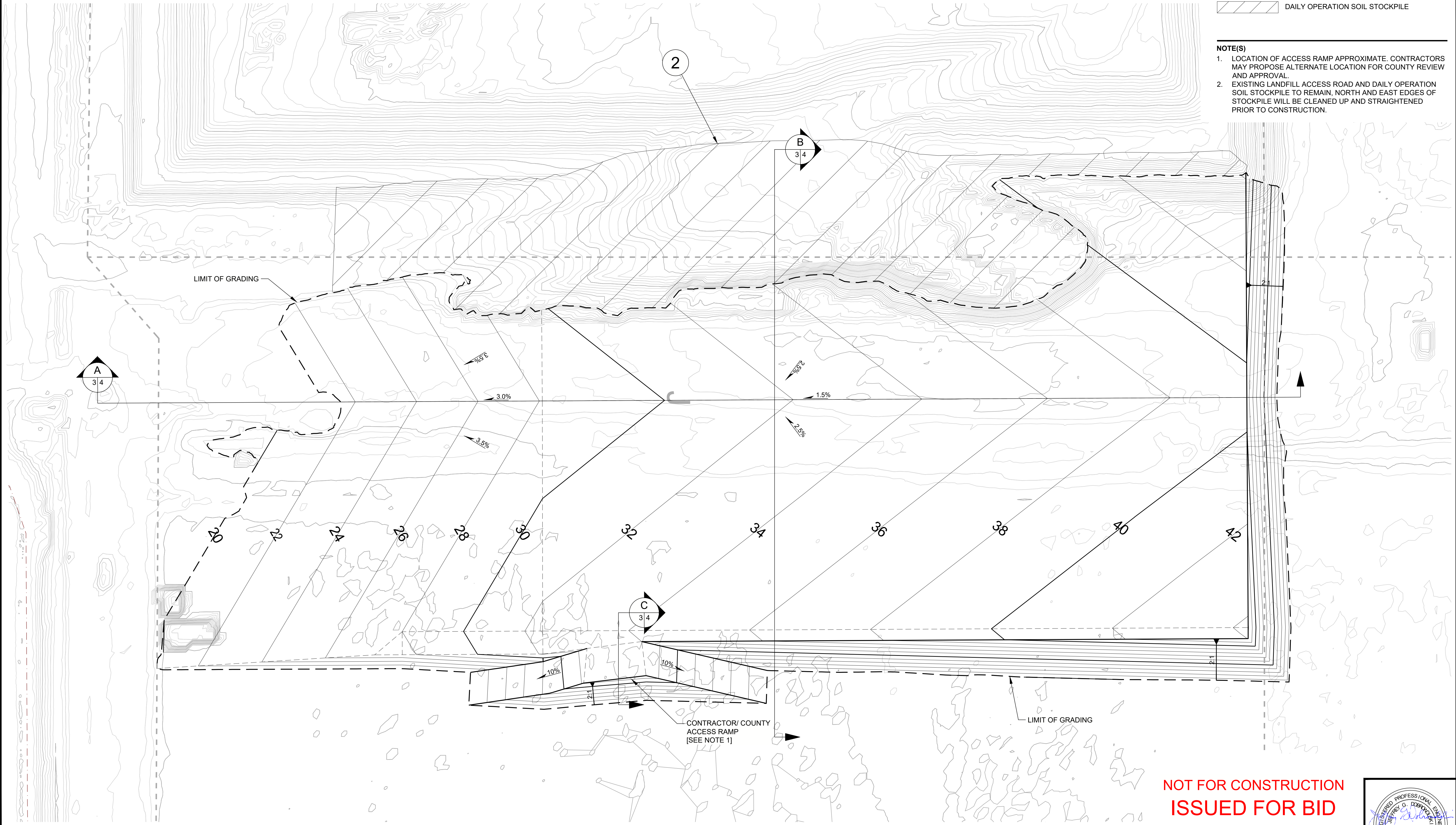
DESIGN BY	KJK	2025-07-07	2025-07-07	2025-07-07	2025-07-07	2025-07-07
DRAWN BY	AM	2025-07-07	2025-07-07	2025-07-07	2025-07-07	2025-07-07
CHECK BY	MH	2025-07-07	2025-07-07	2025-07-07	2025-07-07	2025-07-07
SCALE: SHOWN						
YOLO COUNTY DEPARTMENT OF COMMUNITY SERVICES DIVISION OF INTEGRATED WASTE MANAGEMENT 44090 County Road 28H, Woodland, CA 95776-9101 DIRECTOR						
APPROVED _____ PRINCIPAL ENGINEER						
YOLO COUNTY CENTRAL LANDFILL WMU 7J BASE GRADING PLAN TITLE SHEET						
						SHEET NUMBER
						1

M:\US\1\2025\01\G4\DC\TX_Data\Projects\Yoc\County\Central\F99_PROD\PROJECTS\2025062525_WMU 7J Base Liner Design\2_PROD\DUCTION\Subgrade Design\FB\WMU 7J Subgrade Title IFB.dwg 7-07-25 11:00:37 AM USA\MT\2603

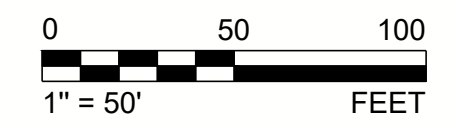


- LEGEND**
- WASTE MANAGEMENT UNIT LIMIT
 - PROPERTY BOUNDARY
 - LIMIT OF GRADING
 - DAILY OPERATION SOIL STOCKPILE

- NOTE(S)**
1. LOCATION OF ACCESS RAMP APPROXIMATE. CONTRACTORS MAY PROPOSE ALTERNATE LOCATION FOR COUNTY REVIEW AND APPROVAL.
 2. EXISTING LANDFILL ACCESS ROAD AND DAILY OPERATION SOIL STOCKPILE TO REMAIN. NORTH AND EAST EDGES OF STOCKPILE WILL BE CLEANED UP AND STRAIGHTENED PRIOR TO CONSTRUCTION.

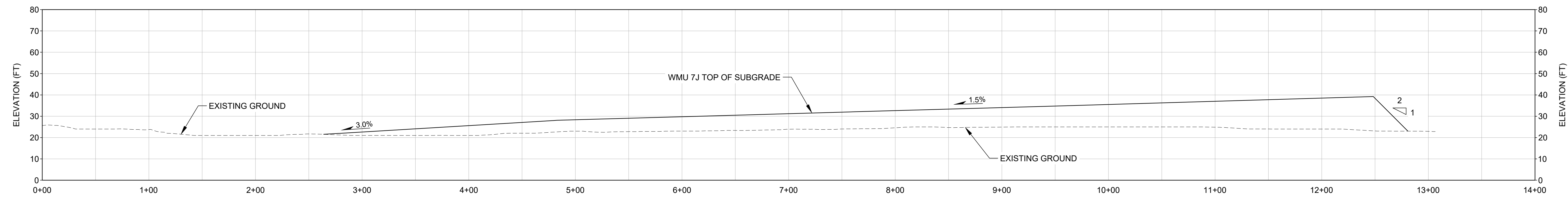


**NOT FOR CONSTRUCTION
ISSUED FOR BID**



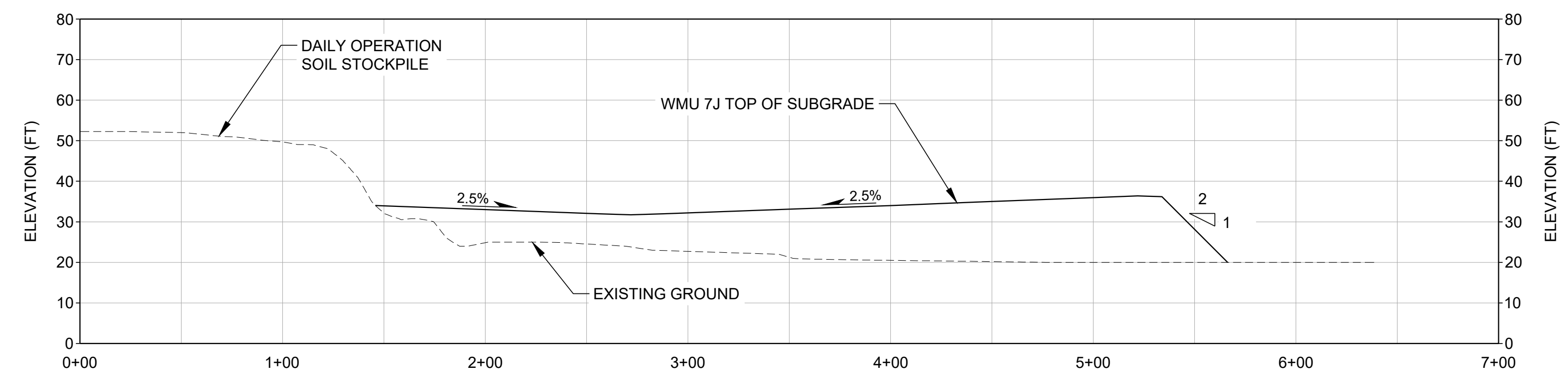
DESIGN BY	KJK	2025-07-07	REVISIONS	
DRAWN BY	AM	2025-07-07	ISSUED FOR BID	0
CHECK BY	MH	2025-07-07		
SCALE: SHOWN				
YOLO COUNTY DEPARTMENT OF COMMUNITY SERVICES DIVISION OF INTEGRATED WASTE MANAGEMENT 44090 County Road 28H, Woodland, CA 95776-9101 DIRECTOR				
YOLO COUNTY CENTRAL LANDFILL WMU 7J BASE GRADING PLAN WMU 7J TOP OF SUBGRADE GRADING PLAN				
APPROVED _____ PRINCIPAL ENGINEER				
SHEET NUMBER 3				

M:\US\N200\GLD\CTX_Data\Projects\YoloCounty\Central\999_PROJECTS\2008\253_WMU 7J Base Liner Design\02_PRODUCTION\Subgrade Design\FB\WMU 7J Subgrade Design\FB_2_25_KJK.dwg 7/07/25 11:25:42 AM US\MMT12603



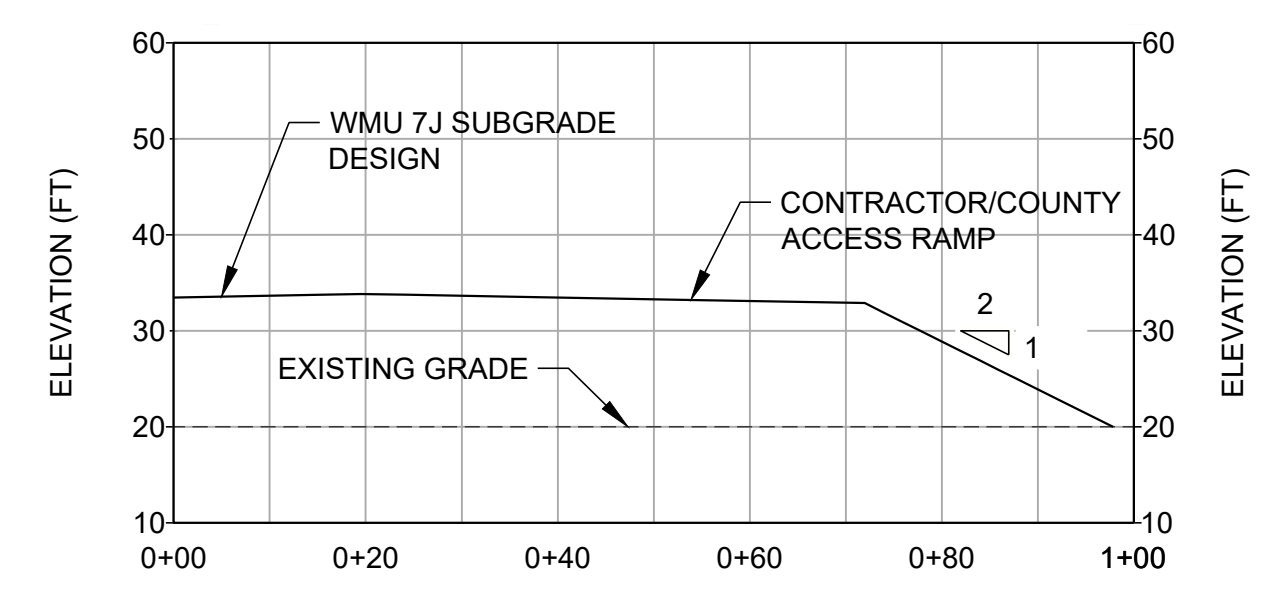
HORZ. SCALE: 1"=50'
VERT. SCALE: 1"=25'

A SECTION
3/4



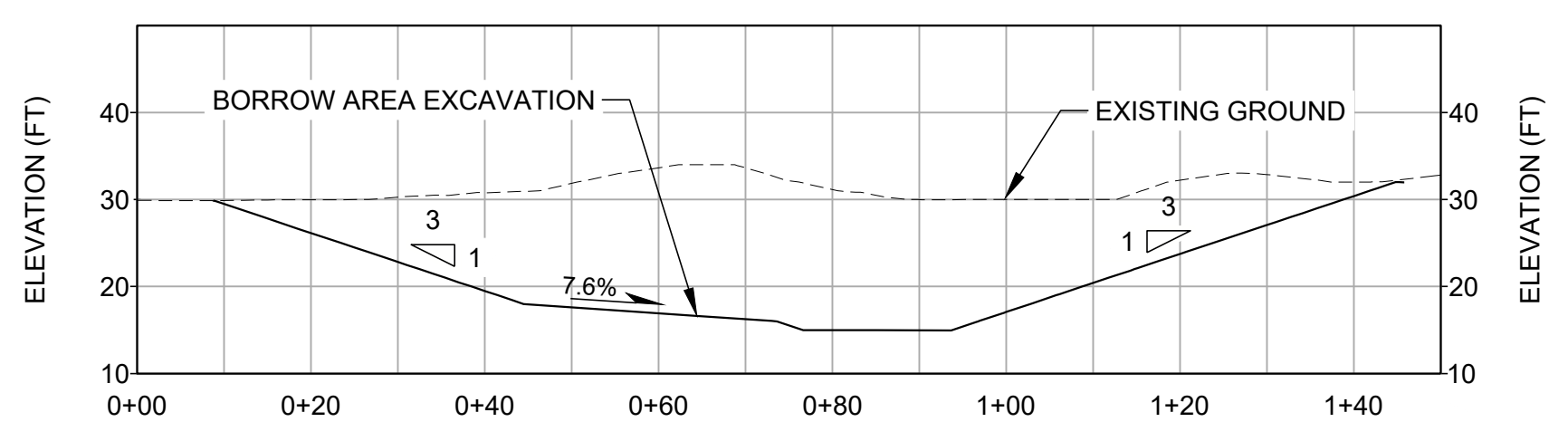
HORZ. SCALE: 1"=50'
VERT. SCALE: 1"=25'

B SECTION
3/4



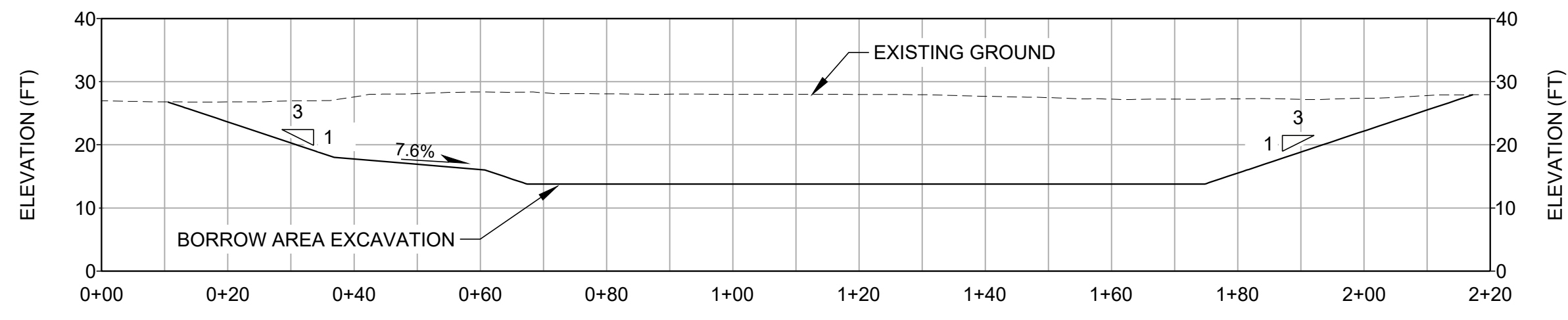
SCALE: 1"=20'

C SECTION
3/4



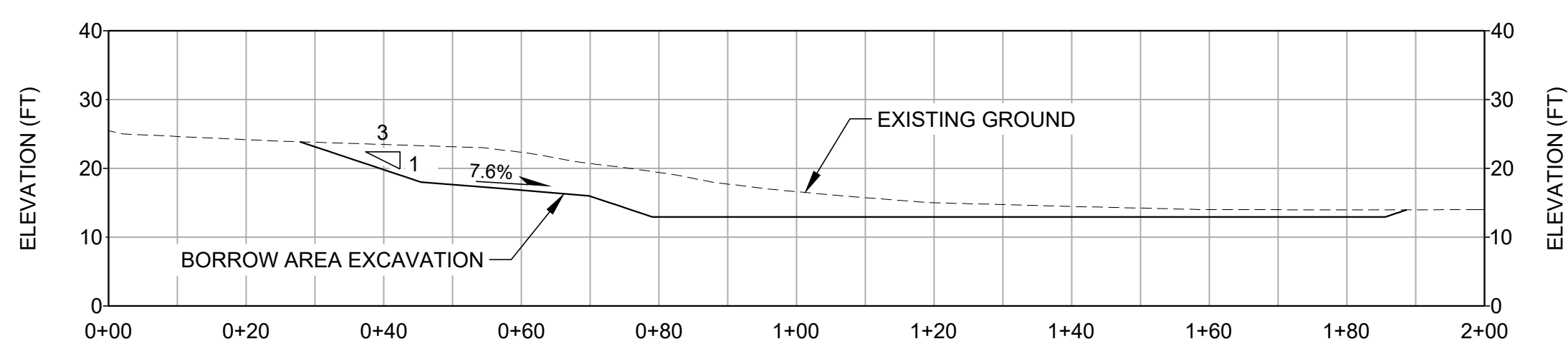
SCALE: 1"=15'

A SECTION
2/4



SCALE: 1"=15'

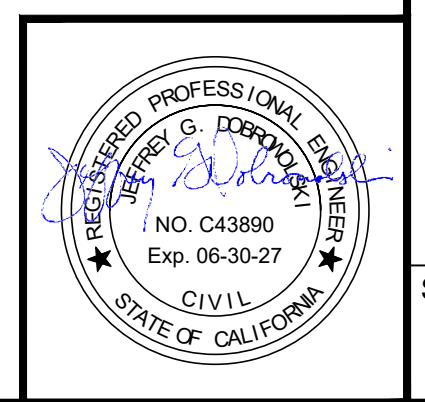
B SECTION
2/4



SCALE: 1"=15'

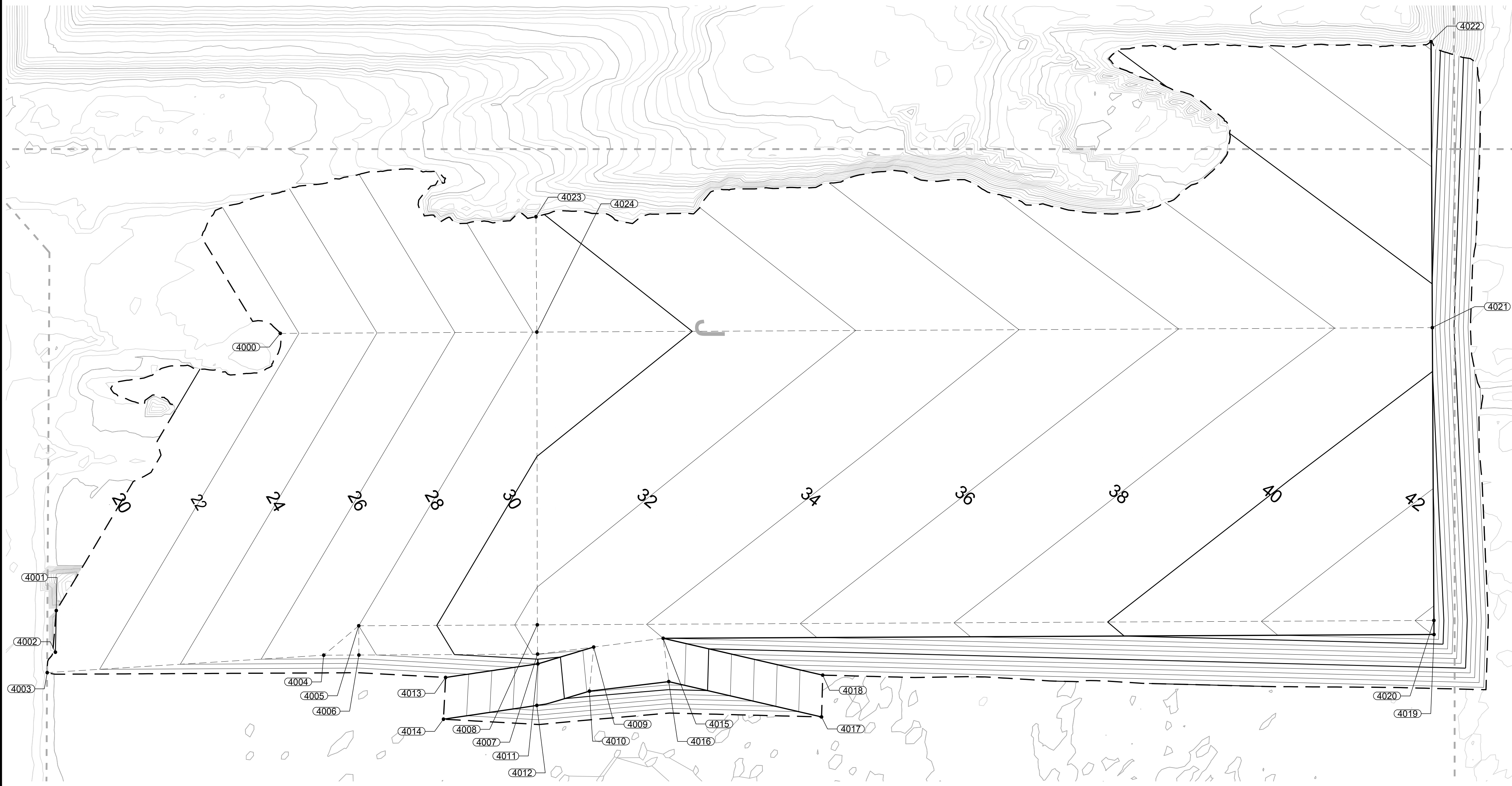
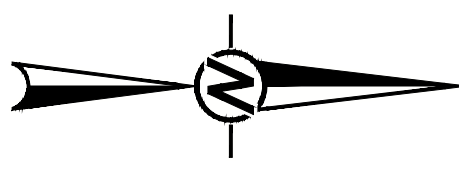
C SECTION
2/4

**NOT FOR CONSTRUCTION
ISSUED FOR BID**

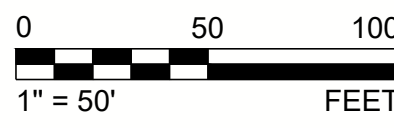


APP	2025-07-07	ISSUED FOR BID	2025-07-07	2025-07-07	2025-07-07
REVISIONS	0	DESIGN BY	KJK	CHECK BY	MH
		DRAWN BY	AM	CHECK BY	MH
		SCALE: SHOWN			
YOLO COUNTY DEPARTMENT OF COMMUNITY SERVICES DIVISION OF INTEGRATED WASTE MANAGEMENT 44990 County Road 28th, Woodland, CA 95776-9101 DIRECTOR _____ PRINCIPAL ENGINEER _____					
YOLO COUNTY CENTRAL LANDFILL WMU 7J BASE GRADING PLAN CROSS-SECTIONS					
SHEET NUMBER					
4					

M:\US\2006\GLD\CTX_Data\Projects\YoloCounty\Central\99g_PROJECTS\20865293_WMU 7J Base Liner Design\02_PRODUCTION\Subgrade Design\FB\WMU 7J Subgrade Design\FB_7_2_25_KJK3.dwg 7:07:25 11/10/14 AM USAM712603



CONTROL POINT TABLE			
POINT NO.	NORTHING (FT)	EASTING (FT)	ELEVATION (FT)
4000	1979562.40	6654068.66	21.52
4001	1979370.92	6654305.37	20.00
4002	1979370.17	6654340.93	20.00
4003	1979363.21	6654358.35	20.70
4004	1979599.51	6654343.50	27.55
4005	1979629.41	6654318.35	28.00
4006	1979629.55	6654343.35	27.55
4007	1979782.29	6654342.57	32.13
4008	1979782.03	6654317.57	32.58
4009	1979830.21	6654336.53	32.97
4010	1979826.56	6654374.18	32.23
4011	1979782.50	6654350.88	27.97
4012	1979781.64	6654386.39	28.00
4013	1979703.65	6654362.51	20.00
4014	1979701.82	6654398.16	20.00
4015	1979889.58	6654329.05	34.00
4016	1979894.33	6654366.06	33.40
4017	1980024.94	6654396.20	20.00
4018	1980025.95	6654360.54	20.00
4019	1980548.36	6654325.81	44.03
4020	1980548.29	6654313.81	44.25
4021	1980546.92	6654063.71	39.25
4022	1980545.81	6653819.51	44.14
4023	1979780.86	6653969.06	29.86
4024	1979781.64	6654067.54	28.10



REFERENCE(S)

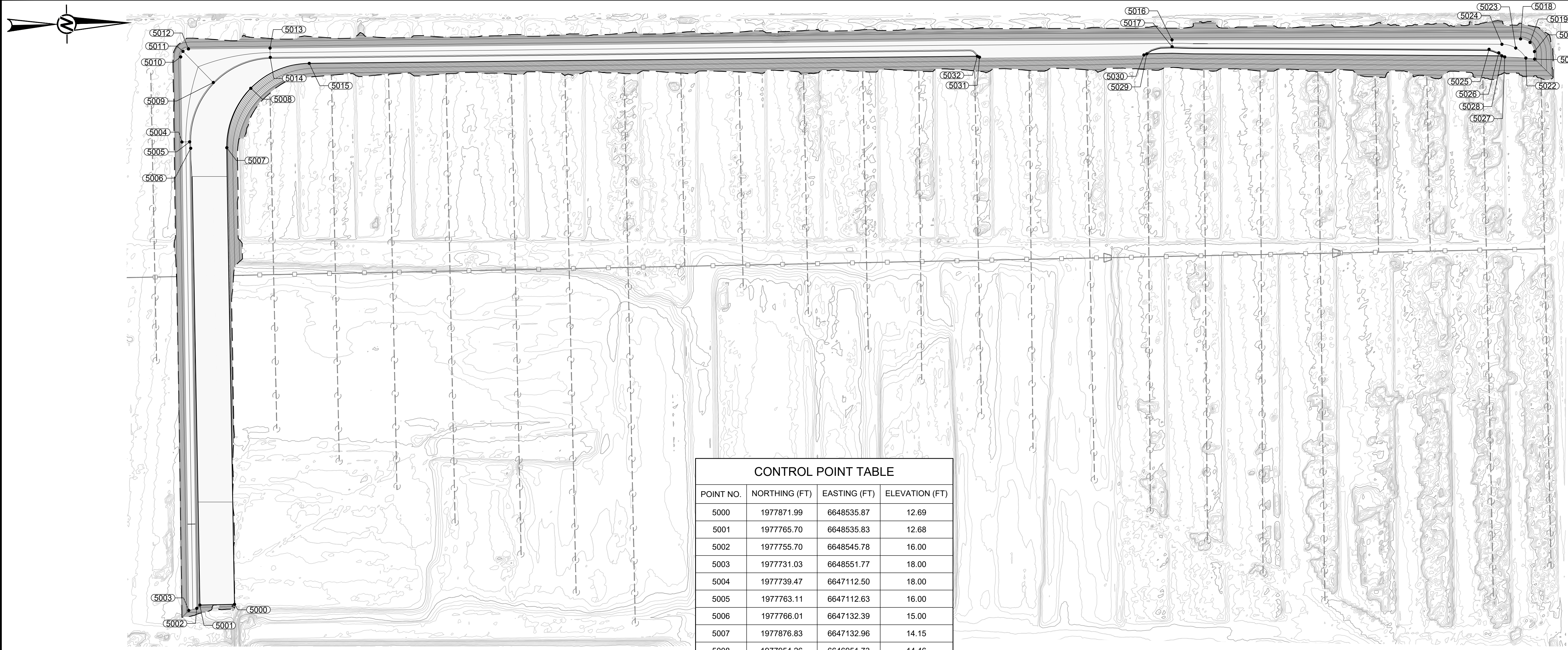
1. BASE TOPOGRAPHY BY YOLO COUNTY, DATED MARCH 14, 2024, NAD 1983, ZONE II, US FOOT. ELEVATIONS ARE BASED ON NAVD 88.

**NOT FOR CONSTRUCTION
ISSUED FOR BID**



DESIGN BY: KJK		2025-07-07	2025-07-07	2025-07-07	SCALE: SHOWN
DRAWN BY: AM		2025-07-07	2025-07-07	2025-07-07	
CHECK BY: MH		2025-07-07	2025-07-07	2025-07-07	
<p>YOLO COUNTY DEPARTMENT OF COMMUNITY SERVICES DIVISION OF INTEGRATED WASTE MANAGEMENT 44090 County Road 28H, Woodland, CA 95776-9101</p> <p>DIRECTOR: _____ PRINCIPAL ENGINEER: _____</p>					
<p>YOLO COUNTY CENTRAL LANDFILL WMU 7J BASE GRADING PLAN TOP OF SUBGRADE CONTROL POINTS</p>					
SHEET NUMBER					5

M:\USIN\2025\GLD\CTX_Data\Projects\YoloCounty\CentralLF99_PROJECTS\2025\6253_WMU_7J_Base_Linear_Design\02_PROD\02\Subgrade_Design\FB\WMU_7J_Subgrade_Design\FB_L_2_25_KJK.dwg 7-07-25 11:50:22 AM USAM72803



SHEET NUMBER 6 TOTAL SHEETS 6

DESIGN BY	KJK	2025-07-07	REVISIONS
DRAWN BY	AM	2025-07-07	ISSUED FOR BID
CHECK BY	MH	2025-07-07	

YOLO COUNTY
 DEPARTMENT OF COMMUNITY SERVICES
 DIVISION OF INTEGRATED WASTE MANAGEMENT
 44090 County Road 28H, Woodland, CA 95776-9101
 DIRECTOR

YOLO COUNTY CENTRAL LANDFILL
 WMU 7J BASE GRADING PLAN
 BORROW AREA CONTROL POINTS

SHEET NUMBER 6

POINT NO.	NORTHING (FT)	EASTING (FT)	ELEVATION (FT)
5000	1977871.99	6648535.87	12.69
5001	1977765.70	6648535.83	12.68
5002	1977755.70	6648545.78	16.00
5003	1977731.03	6648551.77	18.00
5004	1977739.47	6647112.50	18.00
5005	1977763.11	6647112.63	16.00
5006	1977766.01	6647132.39	15.00
5007	1977876.83	6647132.96	14.15
5008	1977954.26	6646951.73	14.46
5009	1977839.54	6646931.69	16.00
5010	1977741.00	6646851.11	18.00
5011	1977748.16	6646834.16	18.00
5012	1977765.22	6646827.25	18.00
5013	1978015.81	6646829.54	18.00
5014	1978015.98	6646858.18	16.00
5015	1978135.28	6646879.05	14.95
5016	1980786.00	6646860.84	18.00
5017	1980785.90	6646882.04	16.00
5018	1981856.29	6646879.30	18.00
5019	1981885.20	6646890.86	18.00
5020	1981898.20	6646919.14	18.00
5021	1981898.20	6646942.29	18.00
5022	1981871.42	6646938.57	17.00
5023	1981840.88	6646907.18	17.00
5024	1981798.85	6646894.90	17.00
5025	1981758.95	6646909.41	16.00
5026	1981788.66	6646920.86	16.00
5027	1981806.74	6646933.84	16.00
5028	1981797.99	6646930.46	14.95
5029	1980707.71	6646902.04	14.95
5030	1980698.74	6646905.18	16.00
5031	1980193.67	6646901.98	16.00
5032	1980187.11	6646898.78	14.95

LEGEND
 3" IRRIGATION LATERAL
 8" DISTRIBUTION HEADER WITH CONTROL CONDUITS

NOTE(S)
 1. CONTRACTOR SHALL REMOVE THE PORTIONS OF THE IRRIGATION LATERALS AND HEADER WITHIN THE LIMITS OF EXCAVATION. THE SYSTEM CONSISTS OF 3-INCH DIAMETER PVC LATERALS WITH ASBESTOS CEMENT COUPLERS AND AN 8-INCH DIAMETER ASBESTOS CEMENT TRUNK LINE, THERE ARE ALSO SEVERAL CONDUITS WITH WIRE AND TUBES.

REFERENCE(S)
 1. BASE TOPOGRAPHY BY YOLO COUNTY, DATED MARCH 14, 2024, NAD 1983, ZONE II, US FOOT. ELEVATIONS ARE BASED ON NAVD 88.

NOT FOR CONSTRUCTION
 ISSUED FOR BID

