

# 2880 East Gibson Road, Woodland 95776

## JUVENILE DETENTION FACILITY

### ROOF REPLACEMENT

COUNTY OF YOLO



### Administration

---

**JASON EISENHART**  
Facilities Superintendent

**TONIA MURPHY**  
Fiscal Administrative Officer

**RYAN PISTOCHINI**  
Director General Services

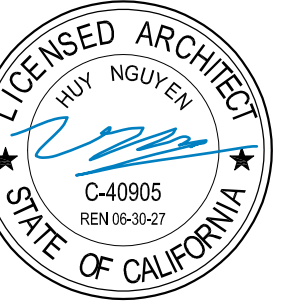
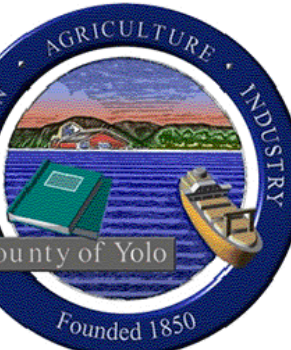
**FRANCISCO IBARRA**  
Project Coordinator

**CARLOS DEL ROSARIO**  
Project Coordinator

Project Number: 240520







CLIENT COUNTY OF YOLO

PROJECT NUMBER 240520

DATE 09/09/2025

DRAWN BY CFH

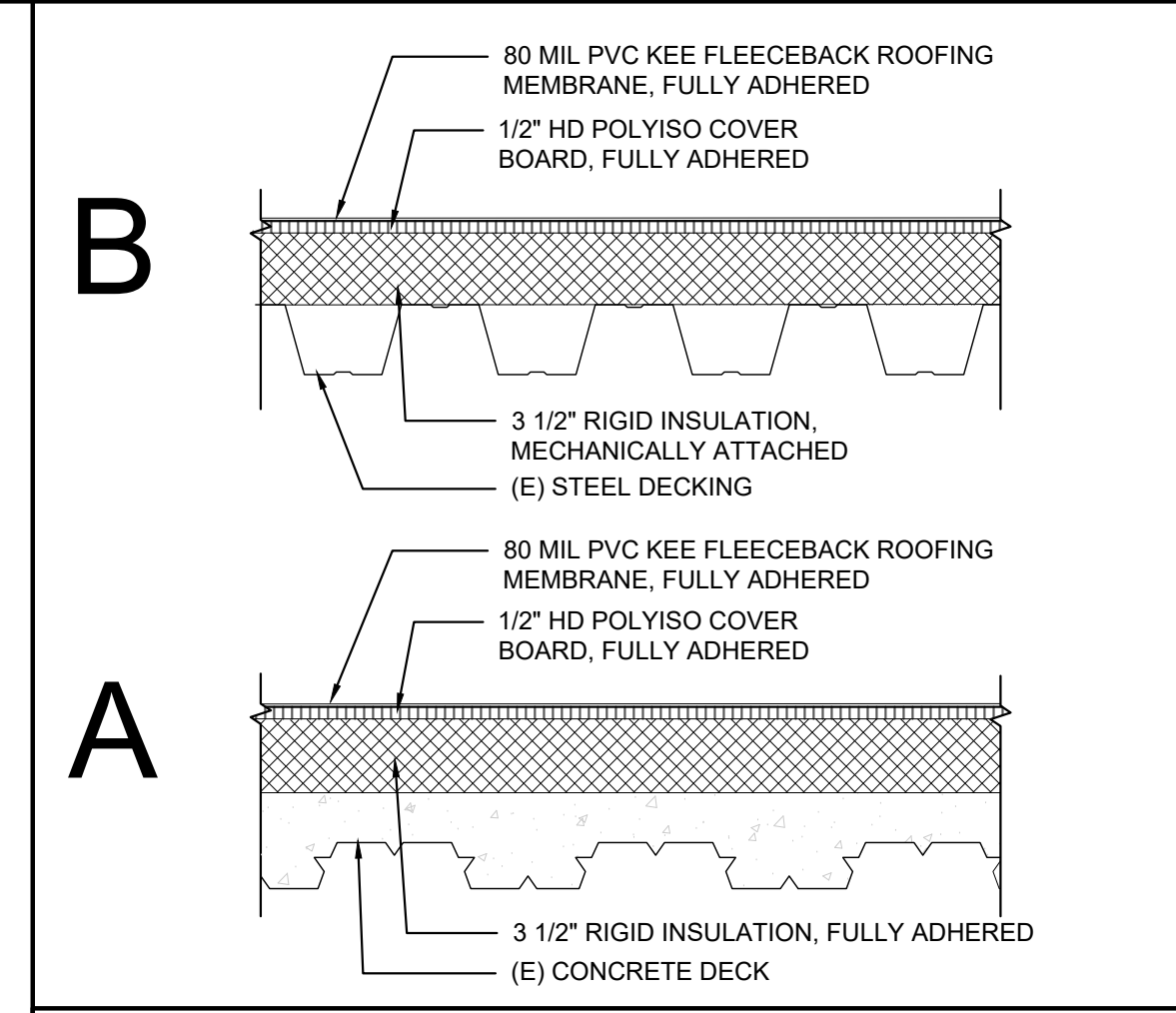
CHECKED BY HN

REVISIONS		
No.	DESCRIPTION	DATE

ISSUE FOR BID

ROOF PLAN

**A-1.0**



**NEW NOMENCLATURE**

AREA	APPROX. SQ. FT.	EXISTING NOMENCLATURE	NEW NOMENCLATURE	REMARKS
A1	3,150	CD/ 3" ISO/ 1/2" CB/SP	A	-
A2	3,150	CD/ 3" ISO/ 1/2" CB/SP	A	-
A3	3,150	CD/ 3" ISO/ 1/2" CB/SP	A	-
B1	17,250	CD/ 3" ISO/ 1/2" CB/SP	A	-
B2	5,900	MTLD/ 3" ISO/ 1/2" CB/SP	B	-
C1	-	NIC	-	-
C2	-	NIC	-	-
C3	-	NIC	-	-
C4	-	NIC	-	-
C5	-	NIC	-	1
TOTAL	32,600			

NOTE: SQUARE FOOTAGE'S SHOWN ARE FOR REFERENCE ONLY - (FIELD VERIFY) CONTRACTOR IS RESPONSIBLE FOR VERIFYING EXISTING CONDITIONS AND FOR ENSURING NEW CONDITIONS ADHERE TO ALL LOCAL AND FEDERAL CODES ALONG WITH INDUSTRY STANDARD GUIDELINES AND REMAIN IN A WATERTIGHT CONDITION.

**ABBREVIATIONS:**  
ISO: ISO BOARD INSULATION  
CD: CONCRETE DECK  
CB: COATED GLASS FACER GYPSUM COVER BOARD  
SP: SINGLE-PLY MEMBRANE  
MTLD: METAL DECK

**REMARKS:**  
1. STANDING SEAM METAL - NEEDS MAINTENANCE CLEAN AND CLEAR GUTTERS

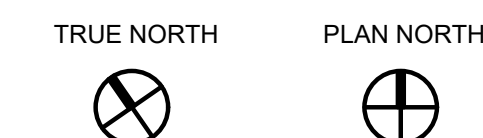
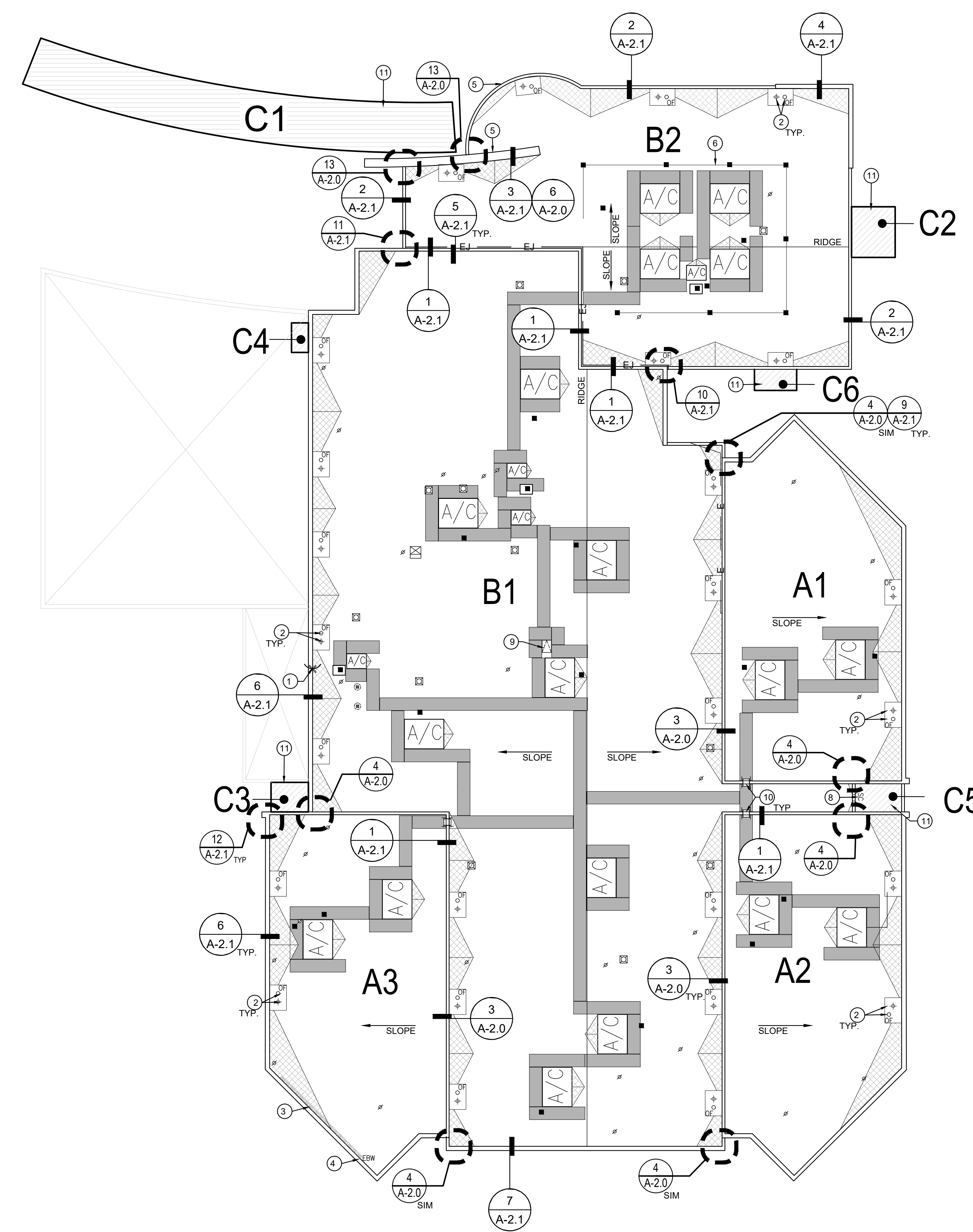
**ROOF AREA INFORMATION**

- 1. WALL-ATTACHED SATELLITE DISH, RE-FLASH AT BELOW, COPING ATTACHMENT LOCATION IN COMPLIANCE WITH THE MANUFACTURERS WARRANTY REQUIREMENTS
- 2. SUMP DRAIN & OVERFLOW DRAINS TO BE REPLACE IN-KIND (RE: 7,8/A-2.0)
- 3. ELECTRIC LINE ON PARAPET TO BE UNINSTALLED AND RE-INSTALLED AFTER COMPLETION OF PARAPET FLASHING BY CERTIFIED TRADE SPECIFIC INSTALLER AND CHECKED FOR FUNCTION BY THE CLIENT PRIOR TO TURNING THE PROJECT BACK OVER
- 4. WALL-MOUNTED PIPE BOX TO BE PROPERLY FLASHED
- 5. CUSTOM COPING METAL CAP
- 6. (E) WIND SCREEN SUPPORT BASES TO BE FLASHED
- 7. (E) COPING METALS TO BE REMOVED AND INTERIOR OF WALL REVIEW FOR DAMAGE - PROPERLY SEAL ALL BUTT JOINTS
- 8. STANDING SEAM METAL - GUTTERS NEED MAINTENANCE AND COMPLETE CLEANING.TYP. ALL
- 9. REPLACE EXISTING ROOF HATCH WITH NEW SLIDING HATCH AND ASSOCIATED TELESCOPING POST. HATCH MUST BE INSTALLED SQUARE AND PLUMB TO ENSURE PROPER FUNCTION.
- 10. ALL WALL MOUNTED LADDERS NEED TO HAVE MANUFACTURER APPROVED LIQUID FLASHING 3 COURSE APPLIED TO MOUNTING POINTS FOLLOWING MANUFACTURER APPROVED STANDARDS FOR RELATED SUBSTRATE
- 11. CONTRACTOR TO SEAL CONNECTIONS BETWEEN EXISTING CANOPIES AND EXTERIOR WALLS

**KEYED NOTES**

Ø PLUMBING VENT (RE: 14/A-2.0)	▨ TAPERED INSULATION
■ PITCH PAN (RE: 14/A-2.0)	— RIDGE LINE
⊕ EXIST. ROOF DRAIN (RE: 7,8/A-2.0)	— ELEC. LINE (RE: 11/A-2.0)
⊕ OF OVERFLOW DRAIN (RE: 7,8/A-2.0) SIM	— COND. LINE (RE: 11/A-2.0)
⊕ CURB MOUNTED VENT (RE: 9/A-2.0)	⊕ ROOF HATCH (RE: 15/A-2.0)
⊕ GOOSE NECK VENT (RE: 9/A-2.0)	⊕ SATELLITE DISH
⊕ CURB MOUNTED A/C (RE: 8/A-2.1)	--- EXTENTS OF WORK
⊕ HEATER VENT (RE: 14/A-2.0)	⊕ EXISTING / N.I.C.
⊕ BOILER VENT (RE: 14/A-2.0)	⊕ ROOF AREA
EBW ELECTRICAL BOX ON WALL	⊕ WALL LADDER (RE: 12/A-2.0)
■ WALK PAD (RE: 16/A-2.0)	→ SLOPE INDICATOR
SC SCUPPER (RE: 5/A-2.0)	

**ROOF SYMBOL LEGEND**





CLIENT COUNTY OF YOLO

PROJECT NUMBER 240520

DATE 09/09/2025

DRAWN BY CFH

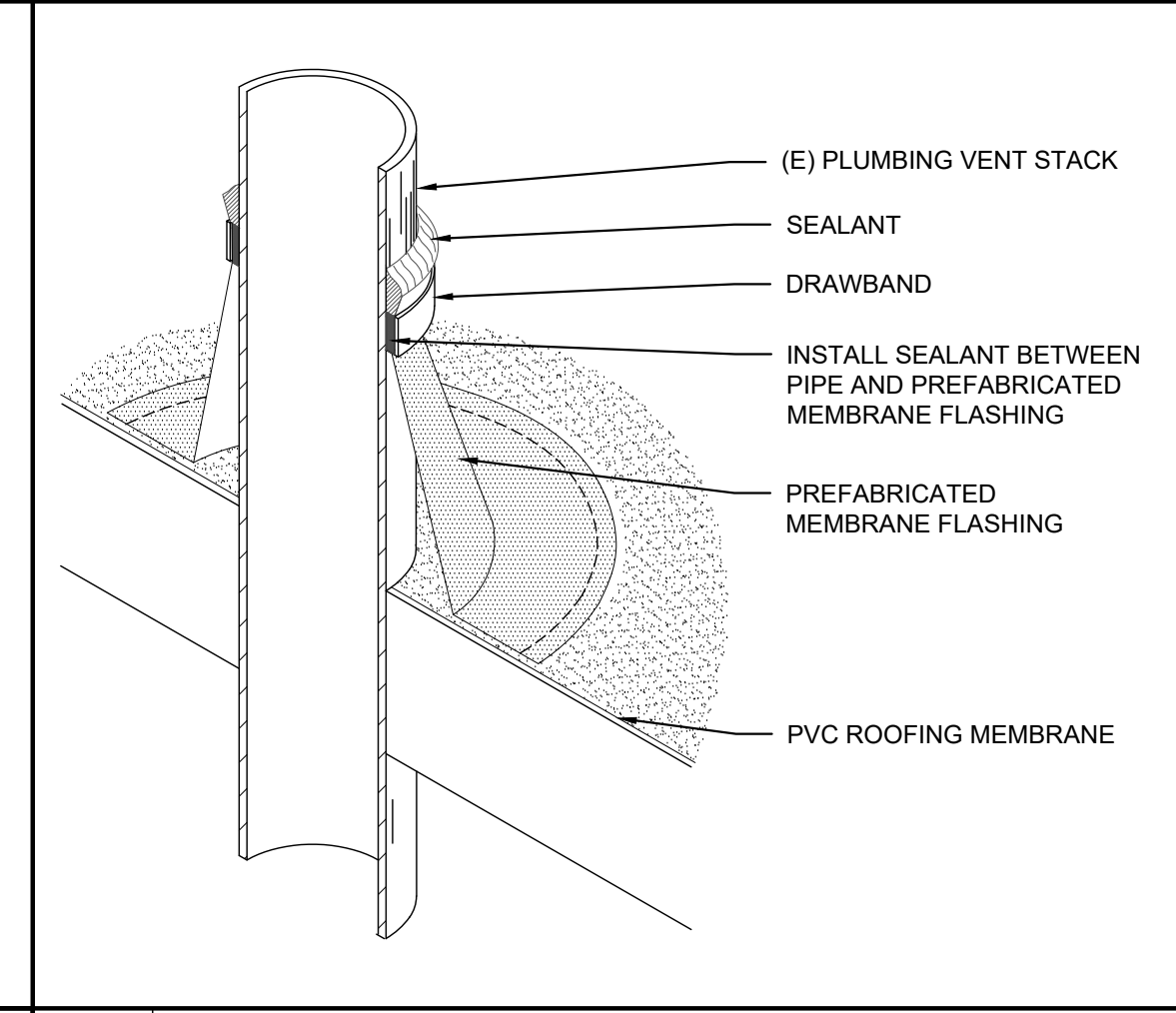
CHECKED BY HN

REVISIONS		
No.	DESCRIPTION	DATE

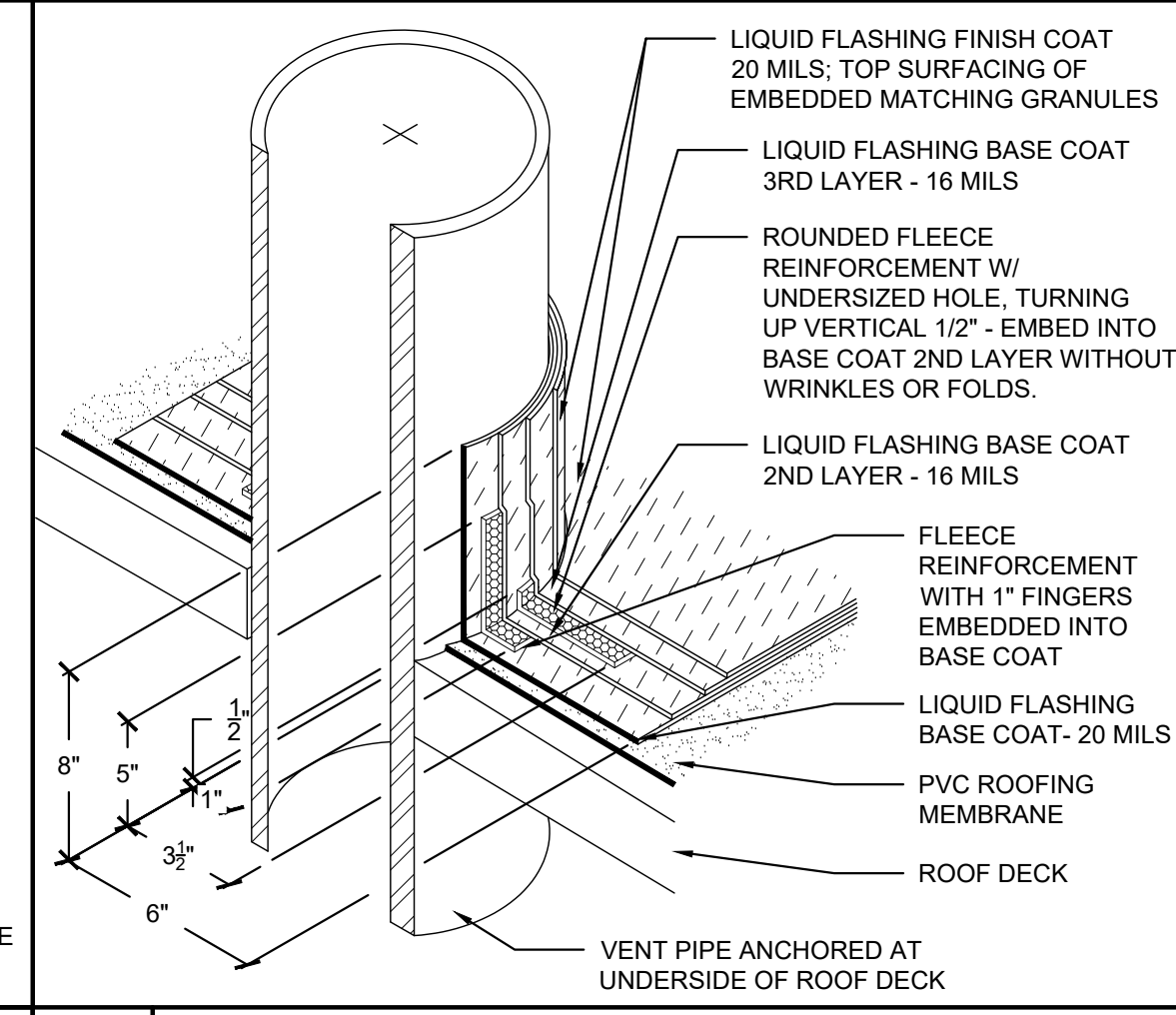
ISSUE FOR BID

GENERAL ROOF DETAILS

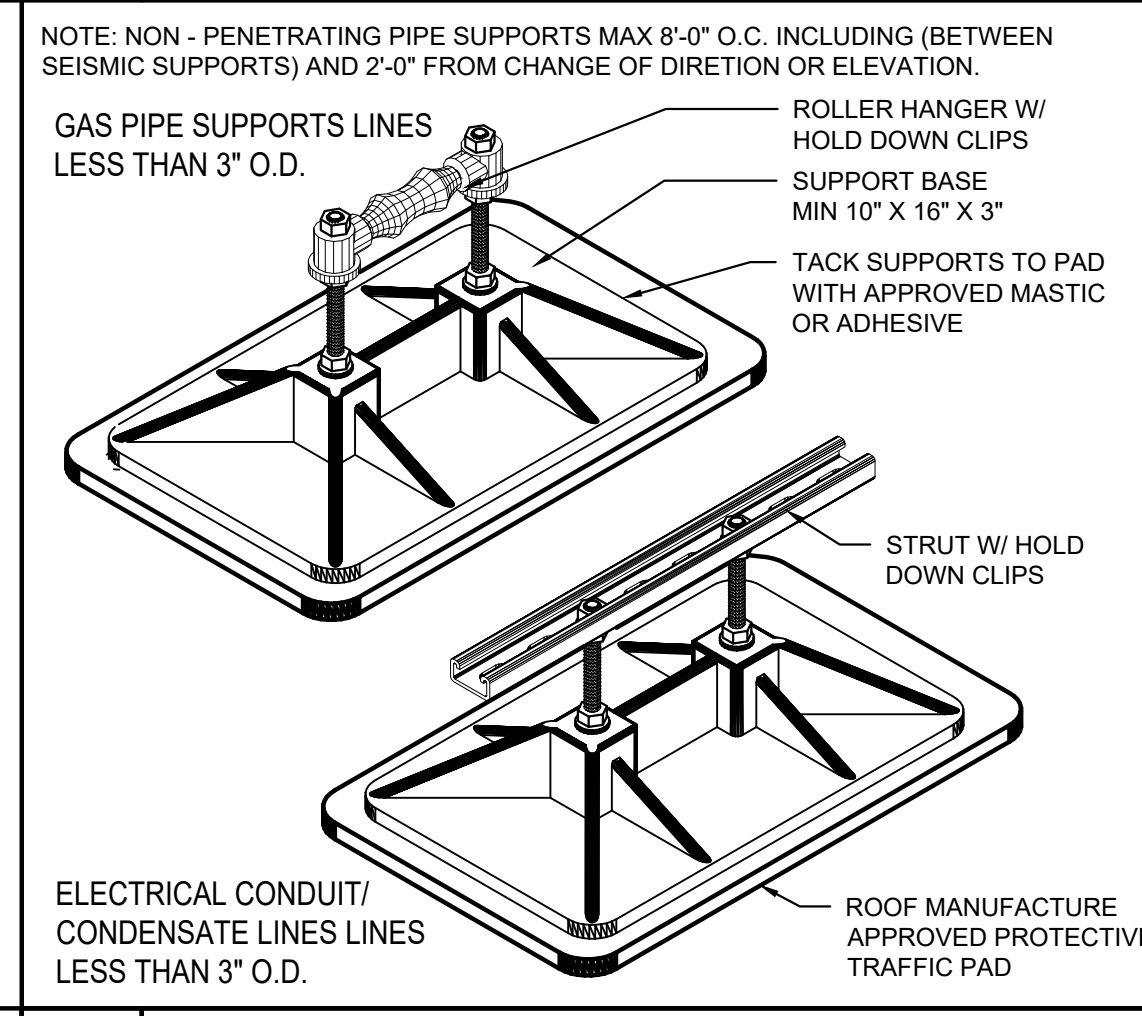
**A-2.0**



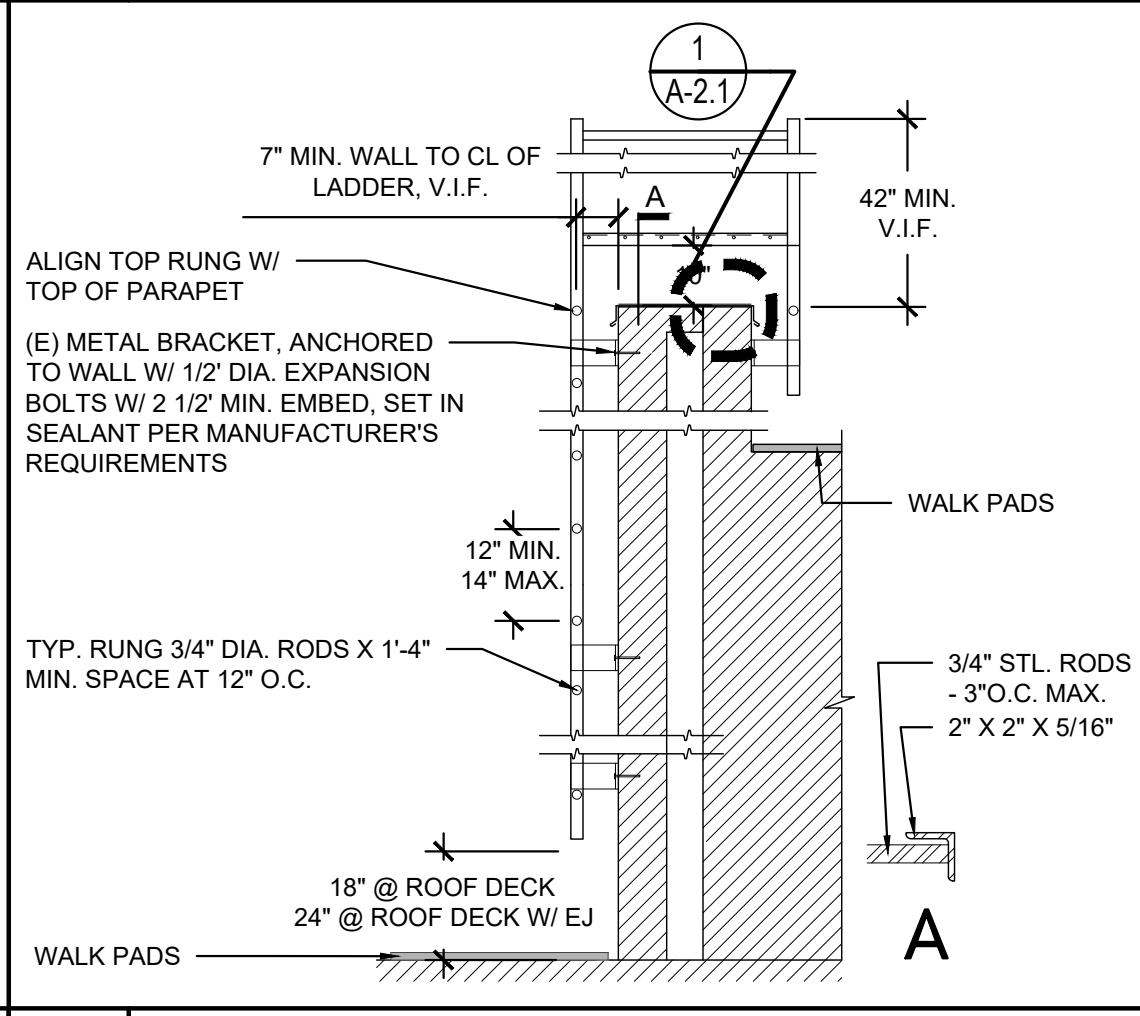
**14 PIPE PENETRATION**  
NOT TO SCALE



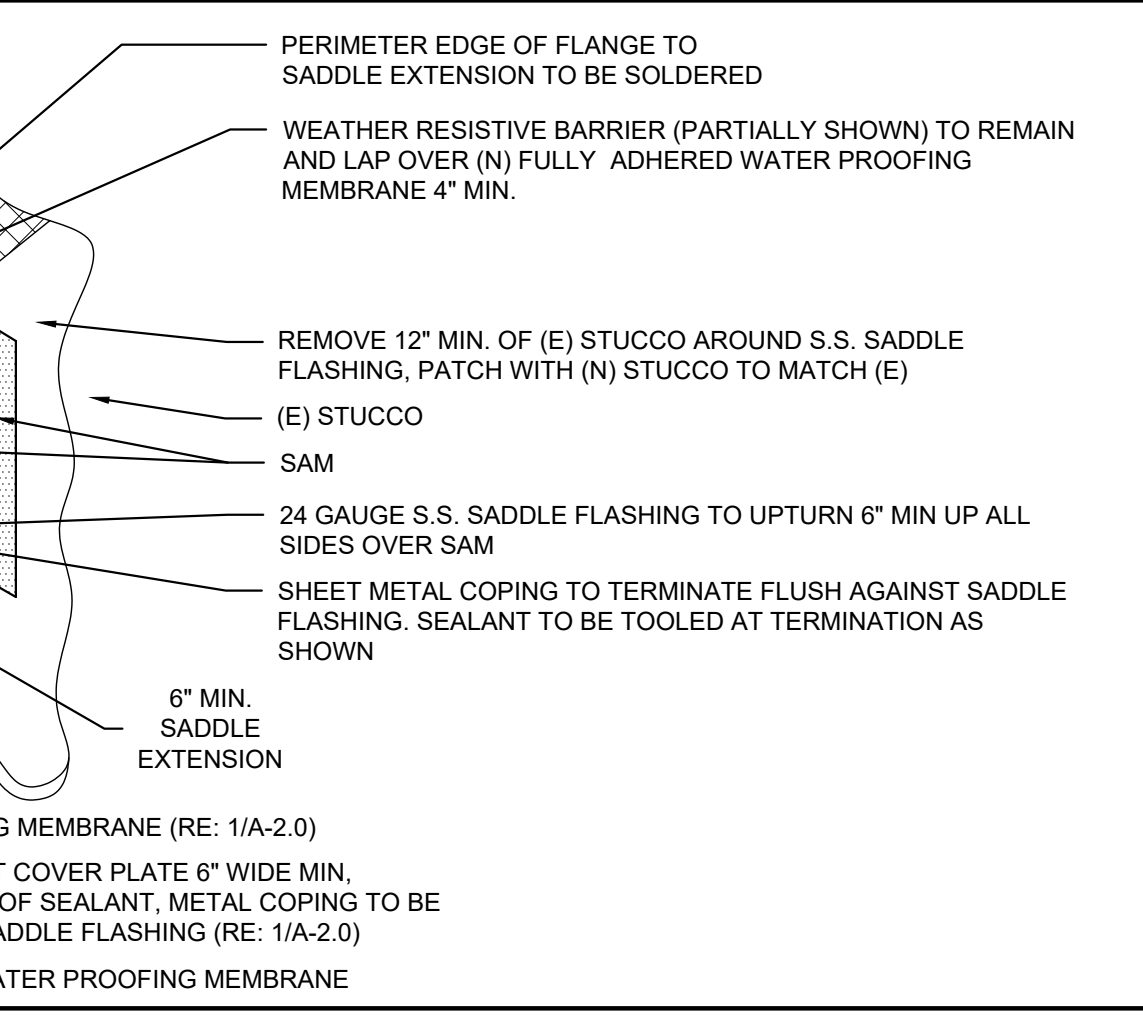
**15 ROOF HATCH**  
NOT TO SCALE



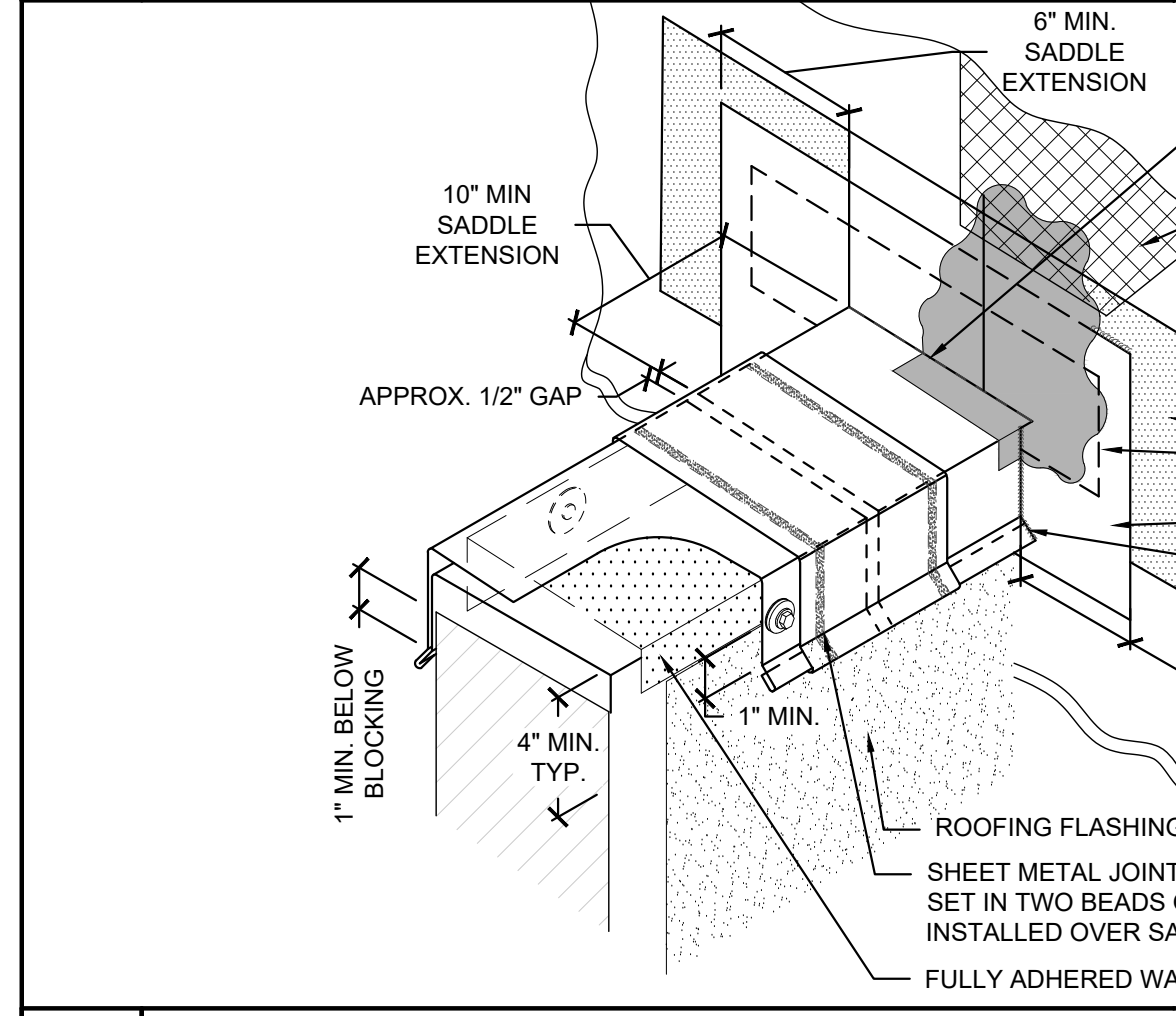
**16 WALK PADS**  
NOT TO SCALE



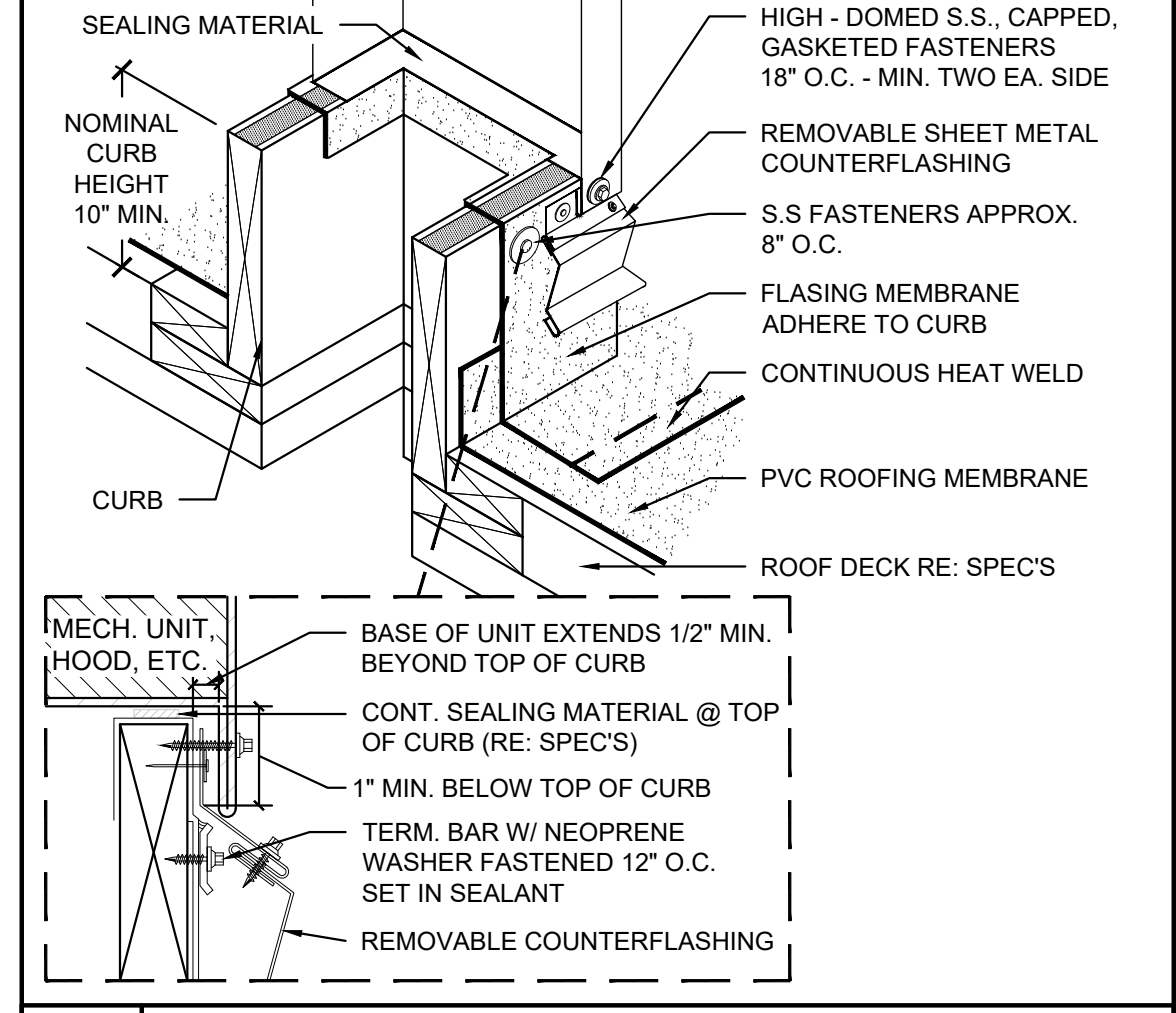
**17 HOODED CURB**  
NOT TO SCALE



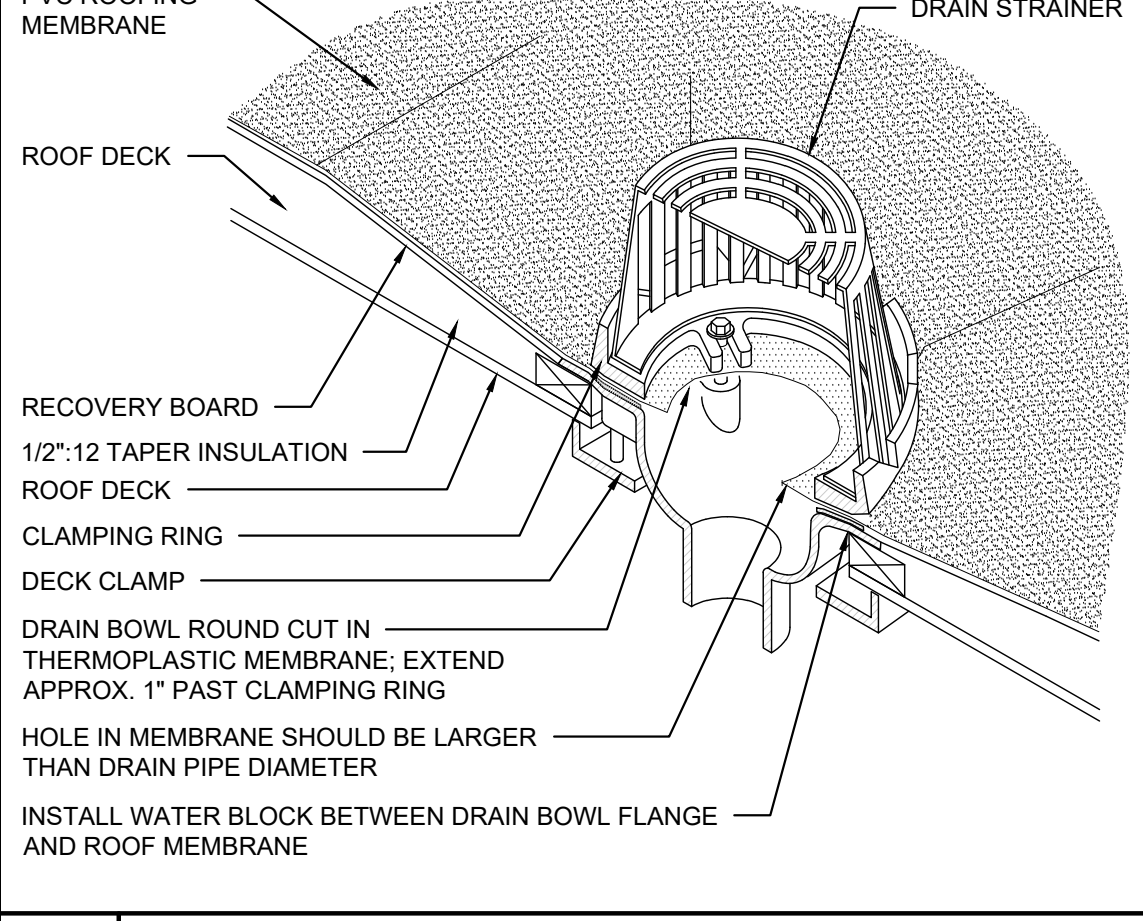
**18 SADDLE FLASHING**  
NOT TO SCALE



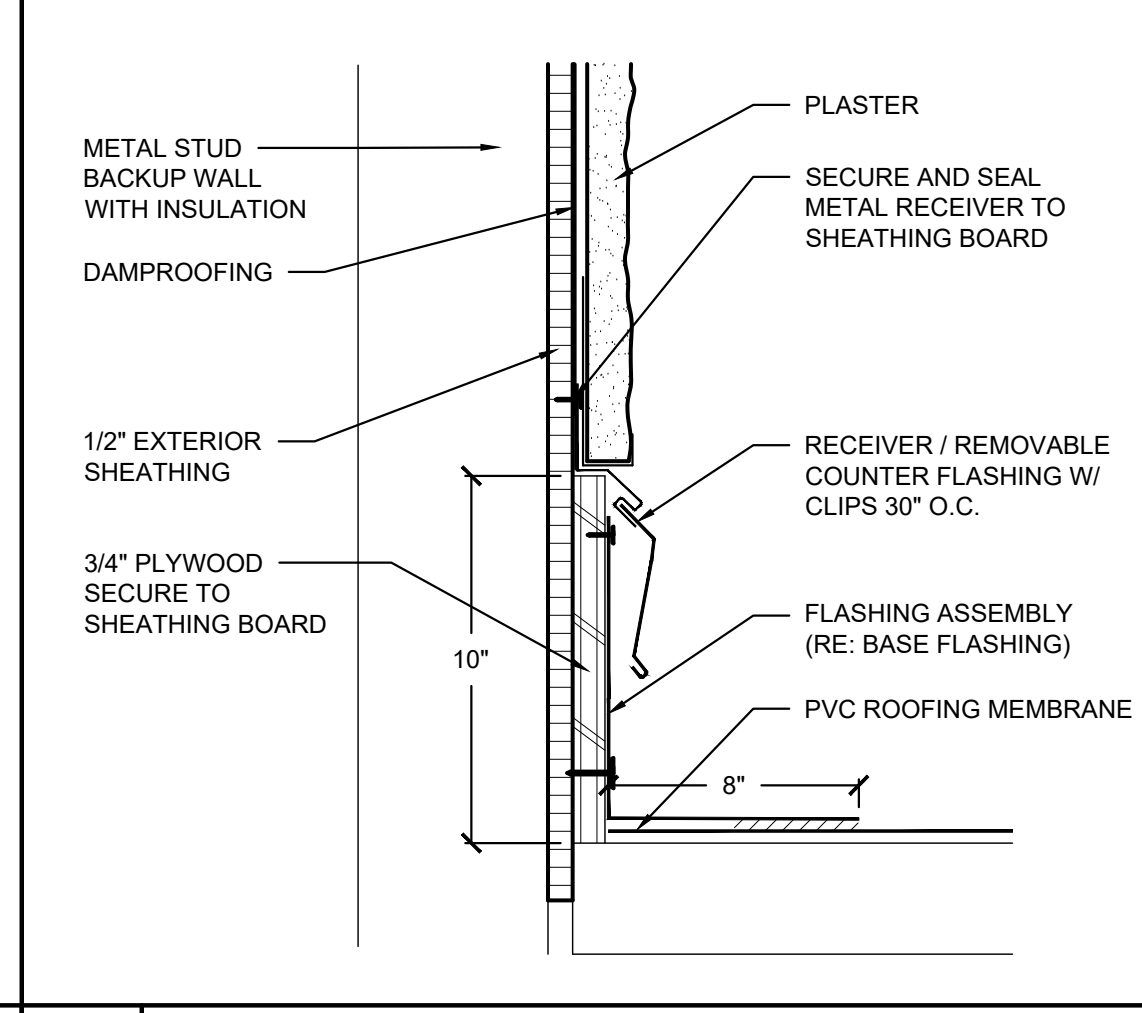
**13 SADDLE FLASHING**  
NOT TO SCALE



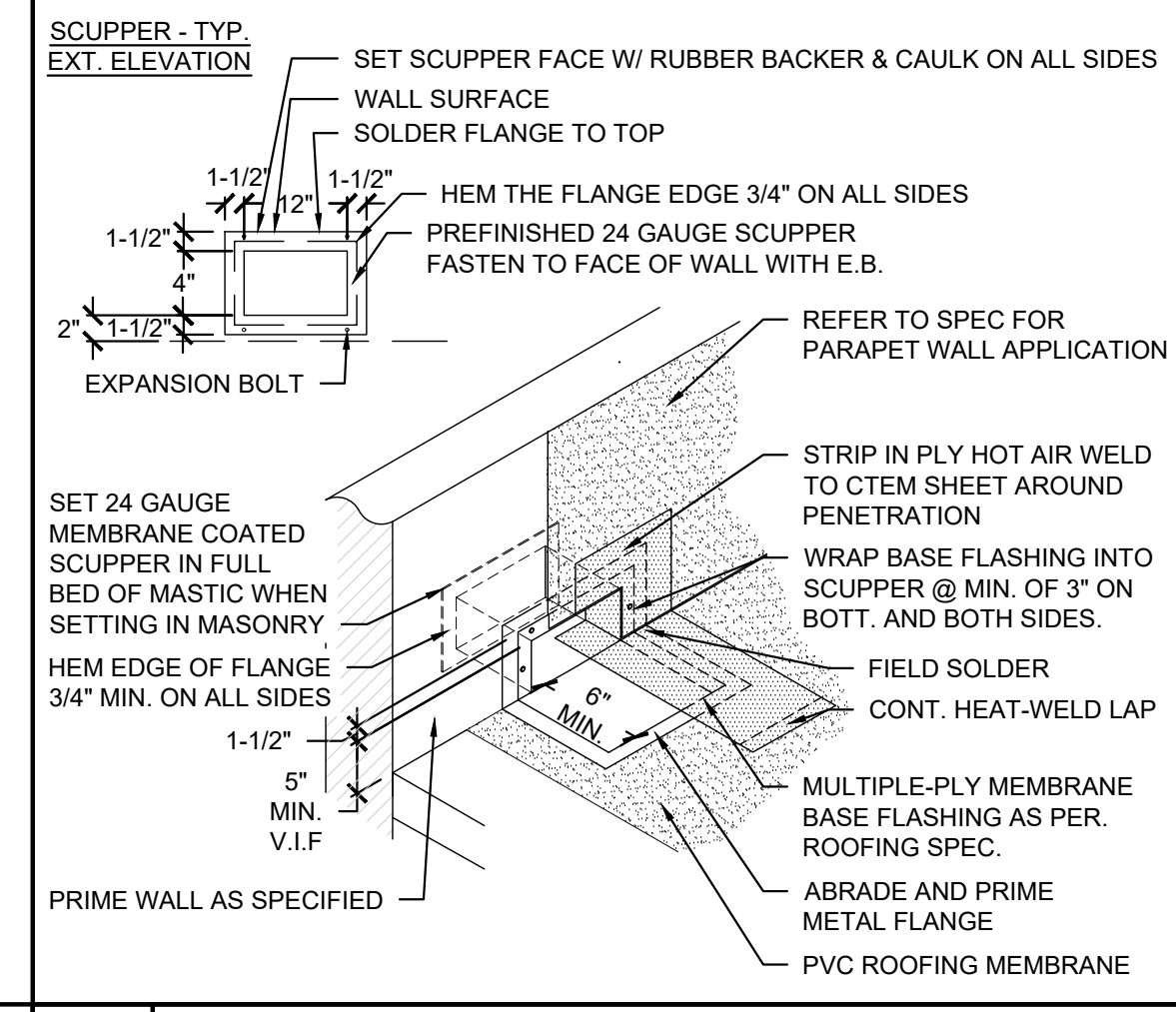
**12 (E) ROOF LADDER @ PARAPET**  
NOT TO SCALE



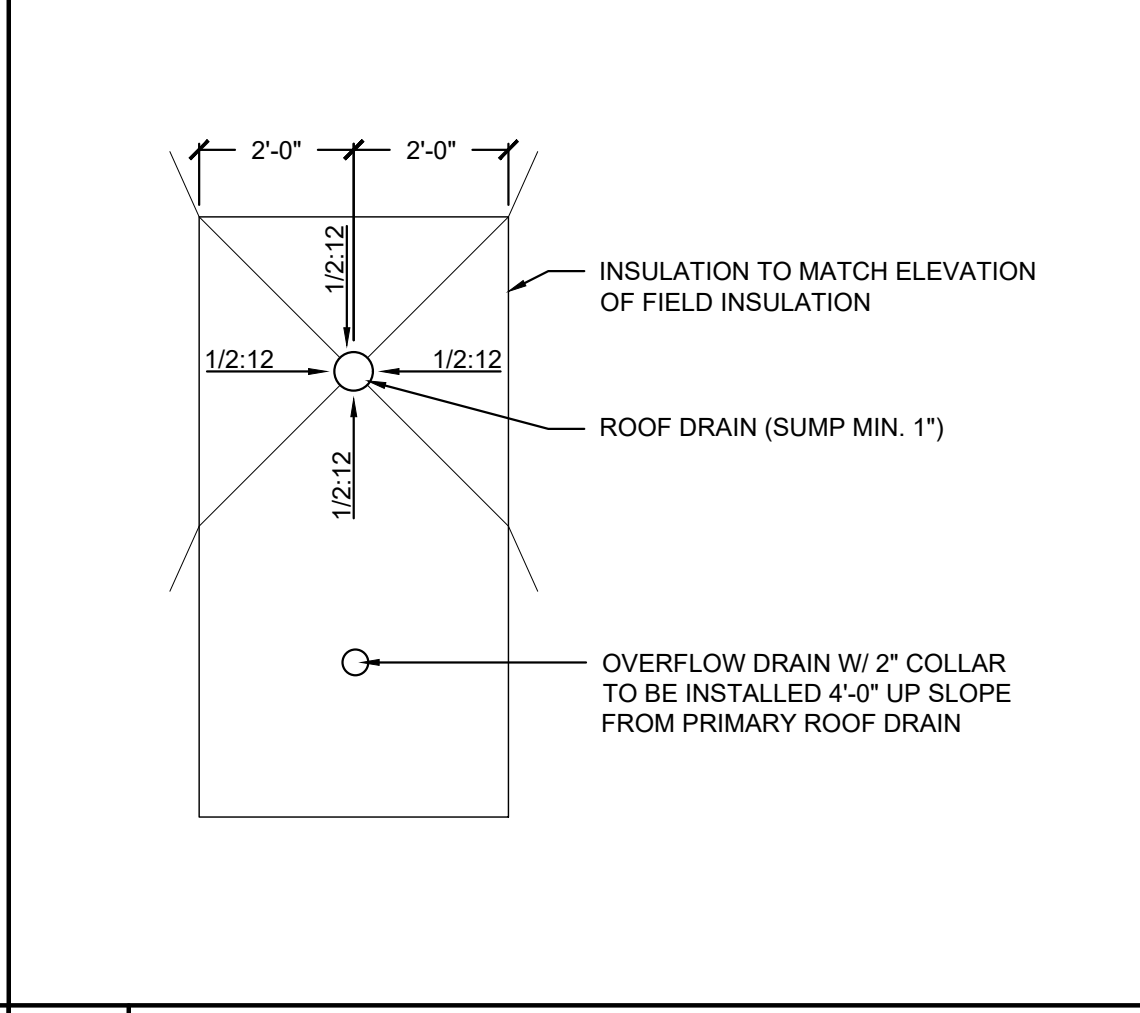
**11 PIPE SUPPORTS**  
NOT TO SCALE



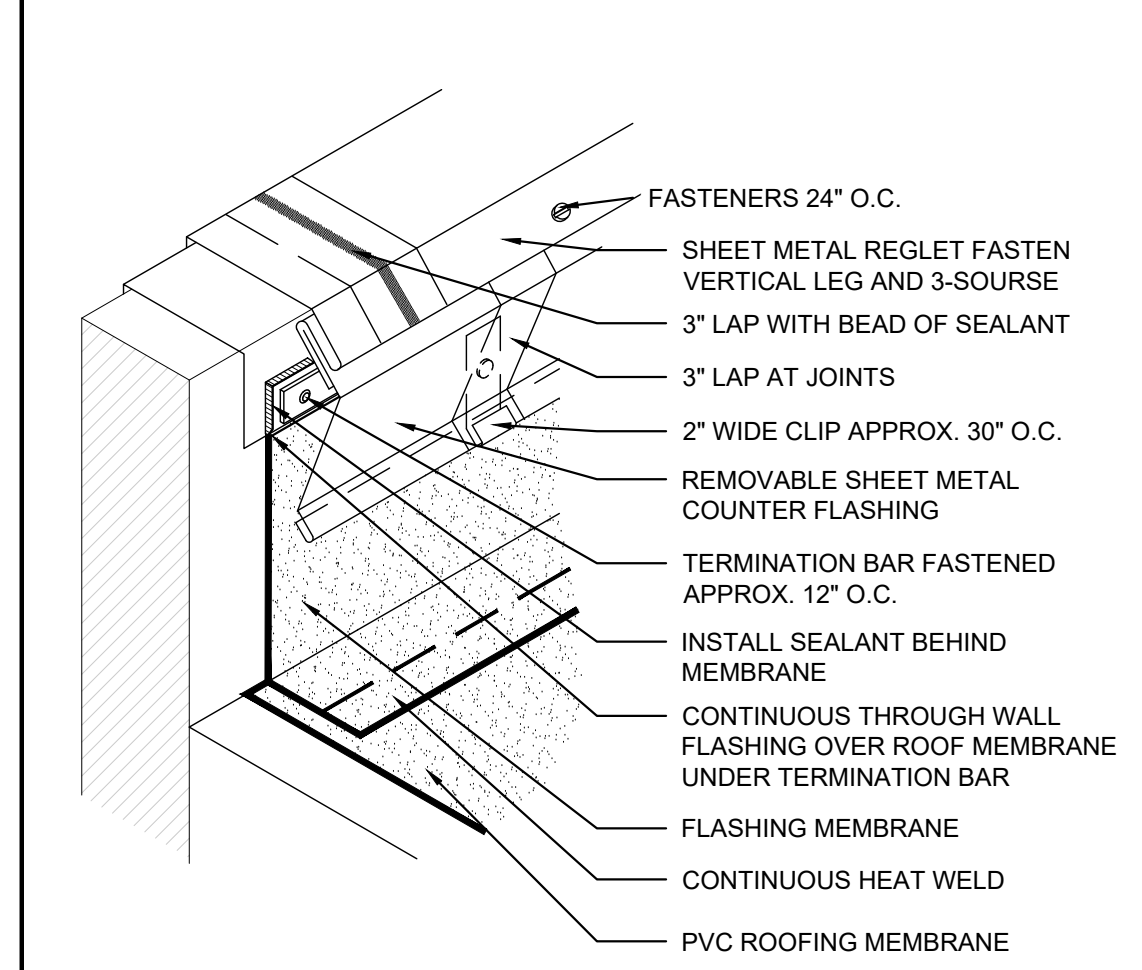
**10 LIQUID FLASHING**  
(FOR CONDITION NOT APPLICABLE WITH DETAIL 14)



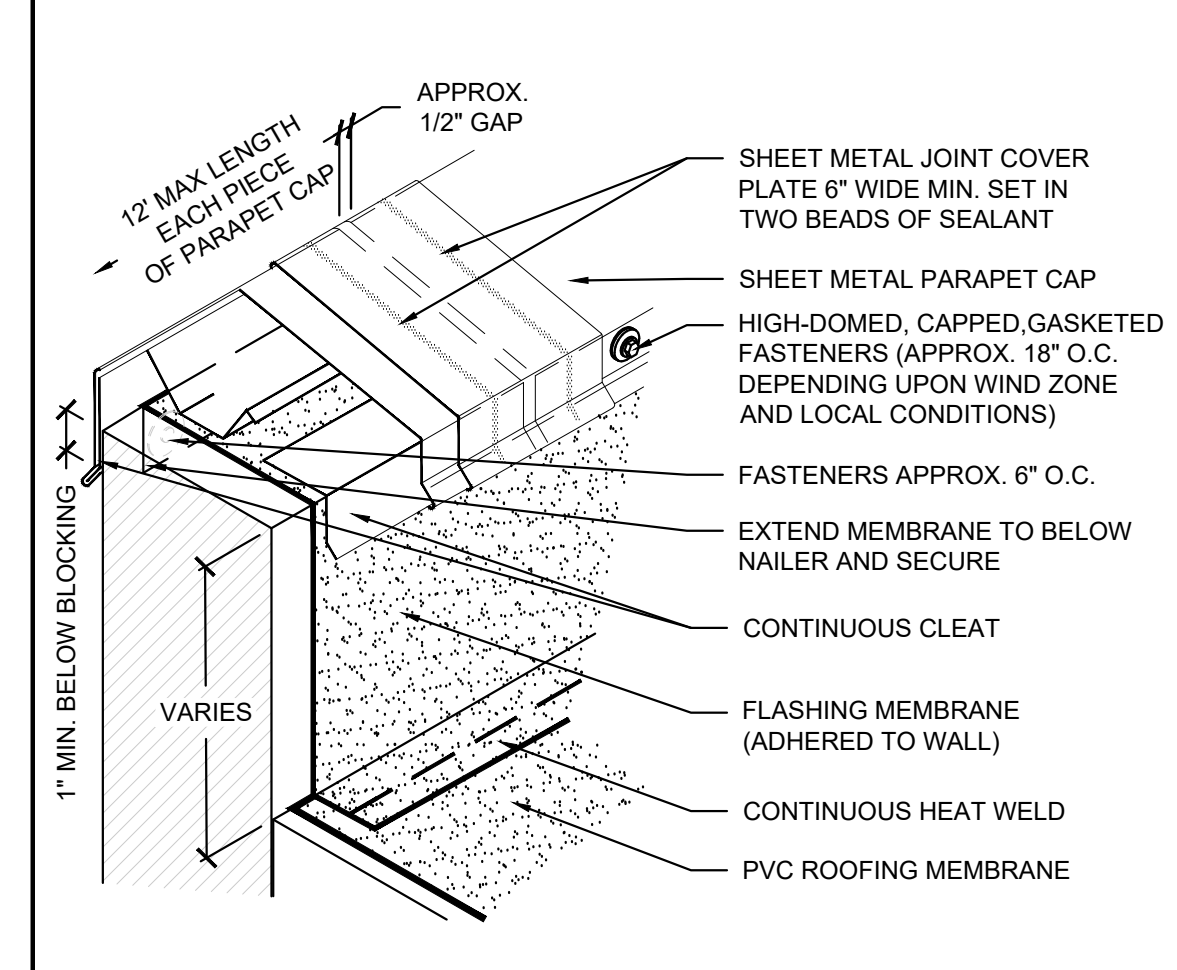
**12 (E) ROOF LADDER @ PARAPET**  
NOT TO SCALE



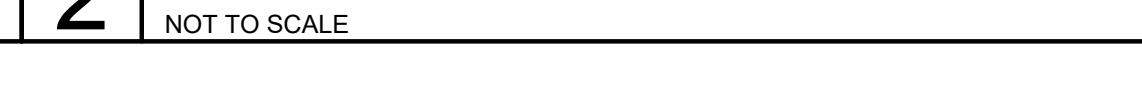
**6 PLASTER WALL FLASHING**  
NOT TO SCALE



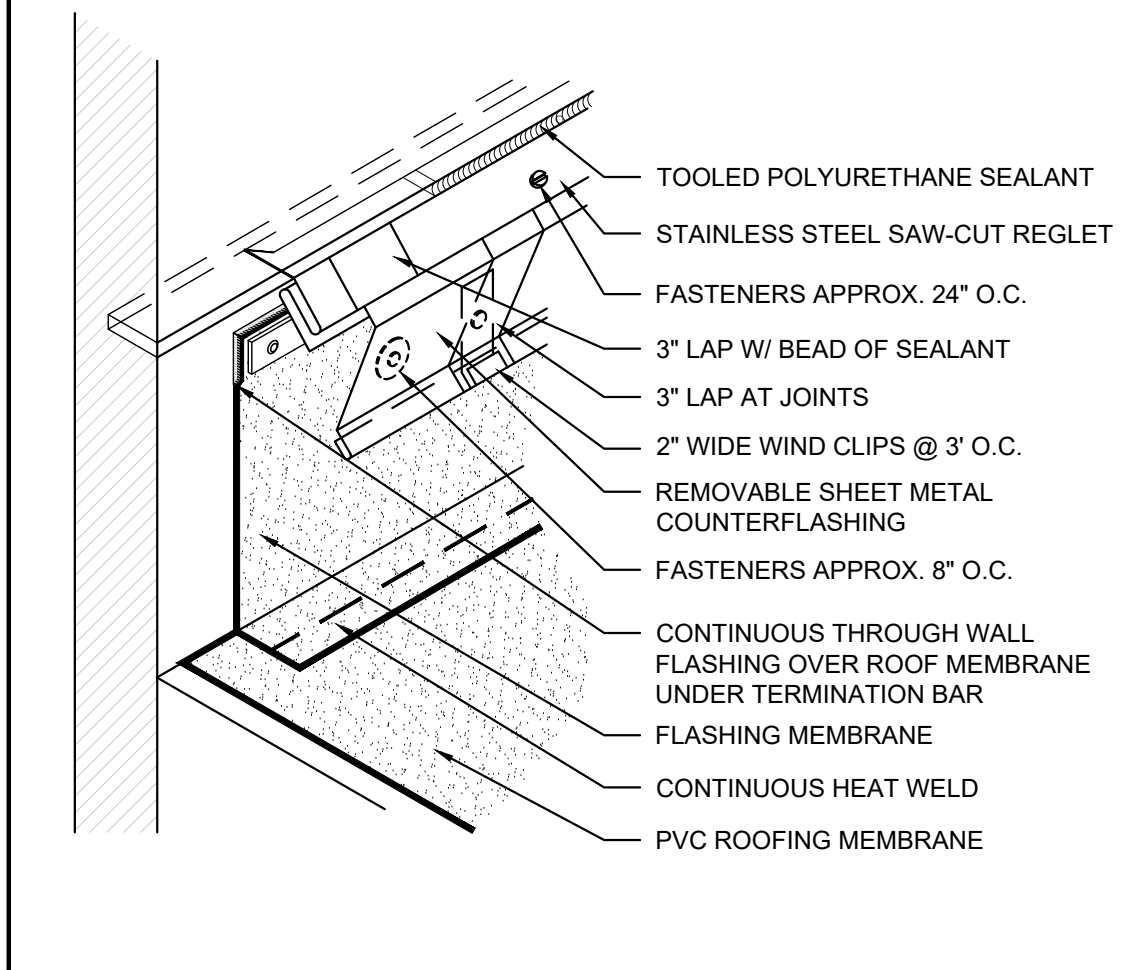
**5 SCUPPER**  
NOT TO SCALE



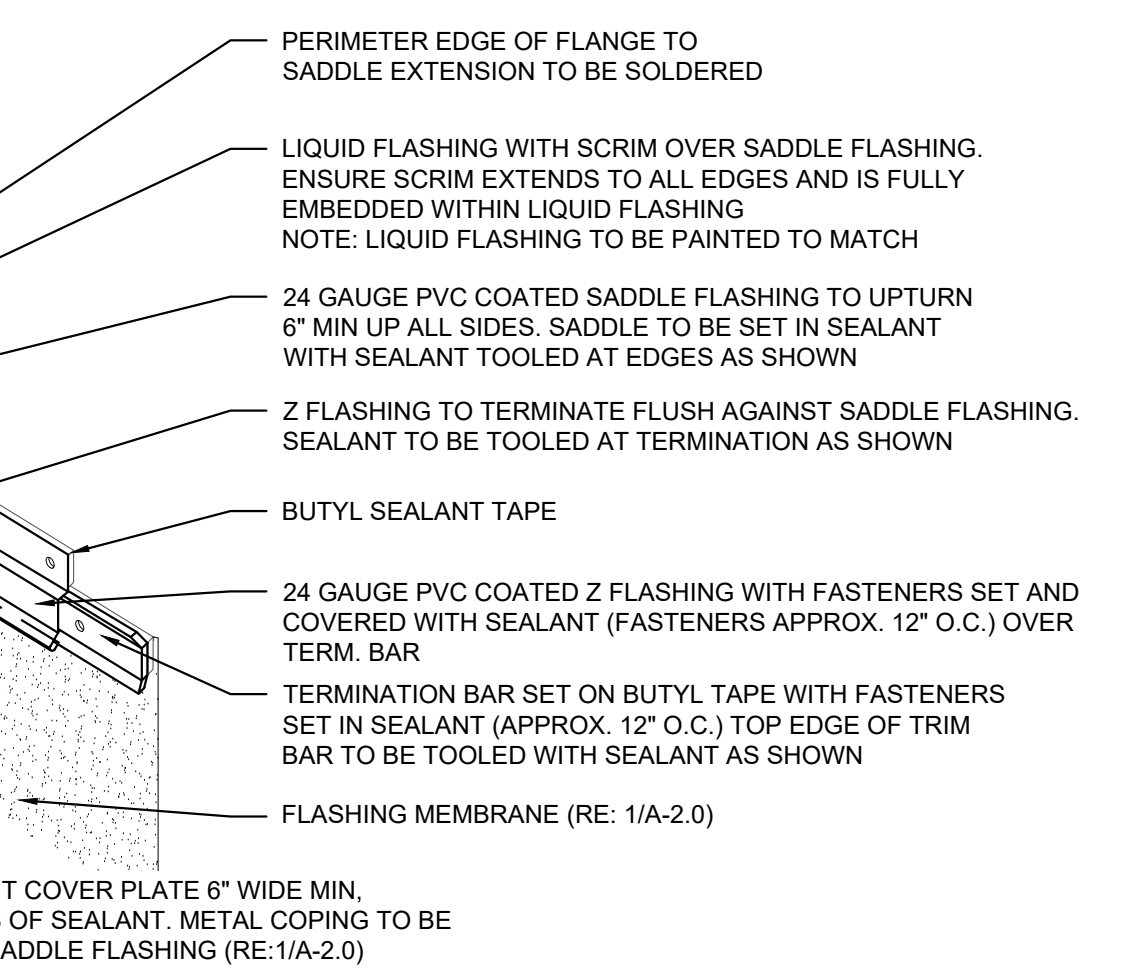
**2 BASE FLASHING**  
NOT TO SCALE



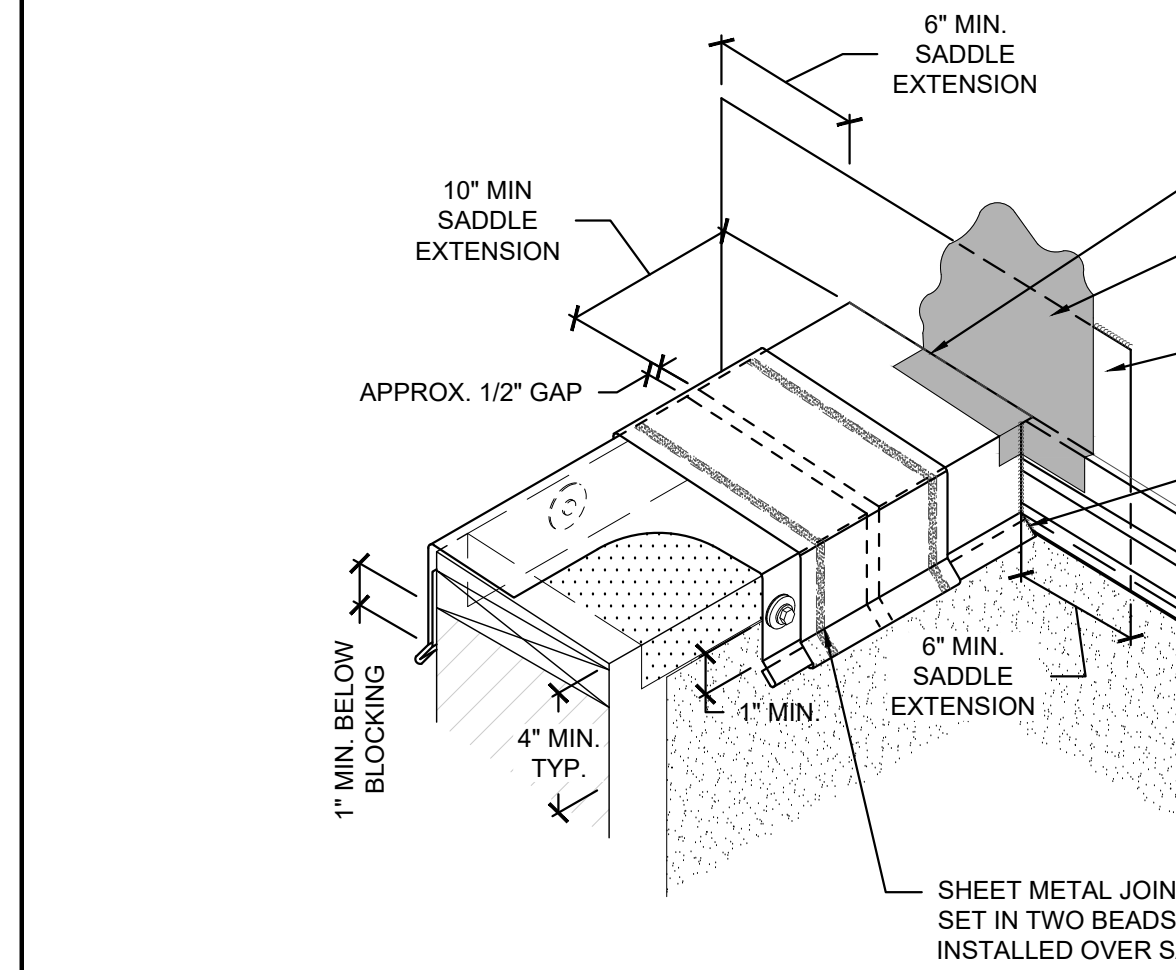
**7 SUMP AND OVERFLOW**  
NOT TO SCALE



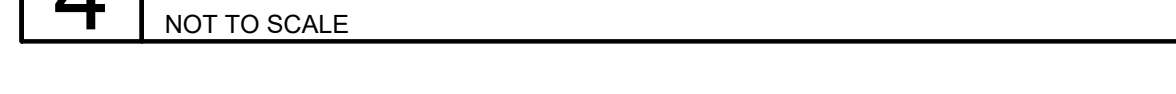
**8 ROOF DRAIN**  
NOT TO SCALE



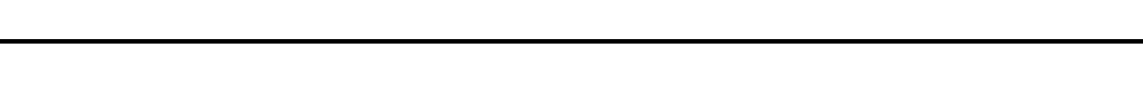
**9 EQUIPMENT CURB**  
NOT TO SCALE



**4 SADDLE FLASHING**  
NOT TO SCALE

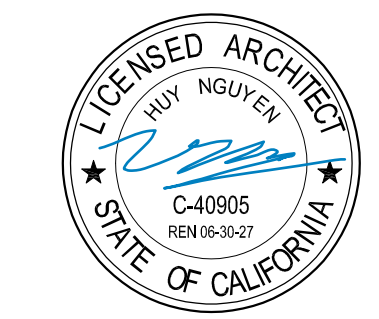


**3 BASE FLASHING**  
NOT TO SCALE



**1 PARAPET & CAP**  
NOT TO SCALE





CLIENT COUNTY OF YOLO

PROJECT NUMBER 240520

DATE 09/09/2025

DRAWN BY CFH

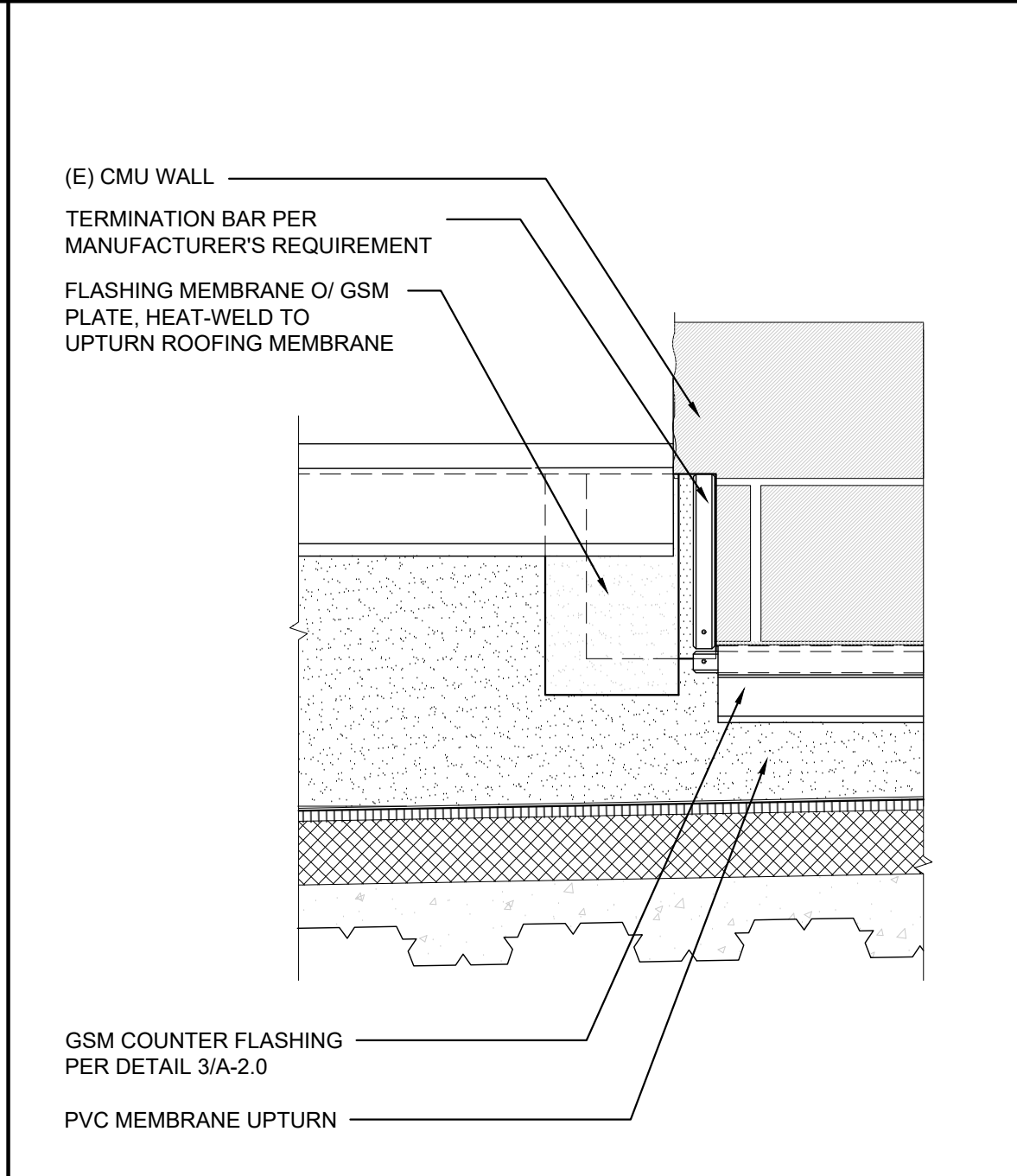
CHECKED BY HN

REVISIONS		
No.	DESCRIPTION	DATE

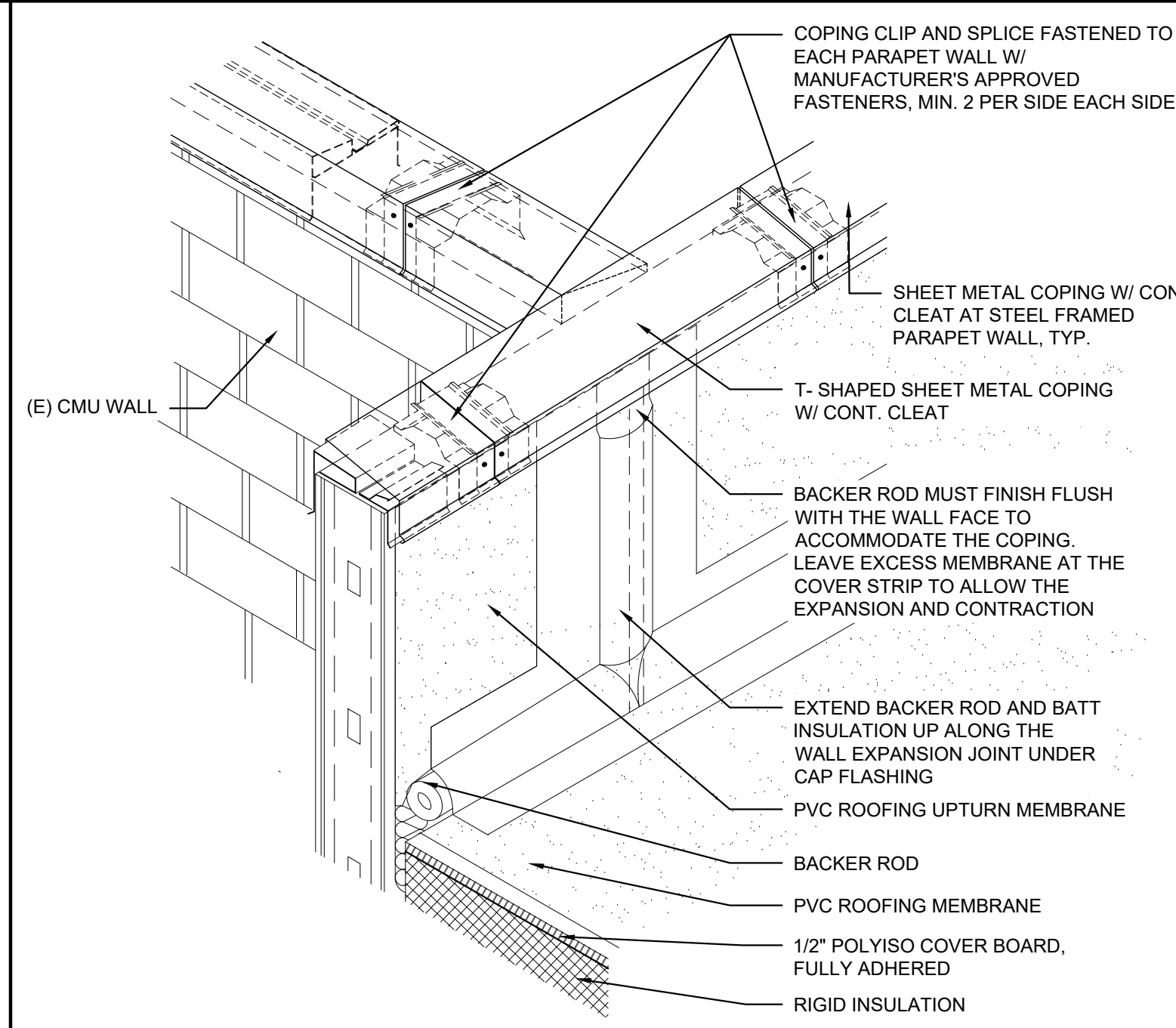
ISSUE FOR BID

ROOF DETAILS

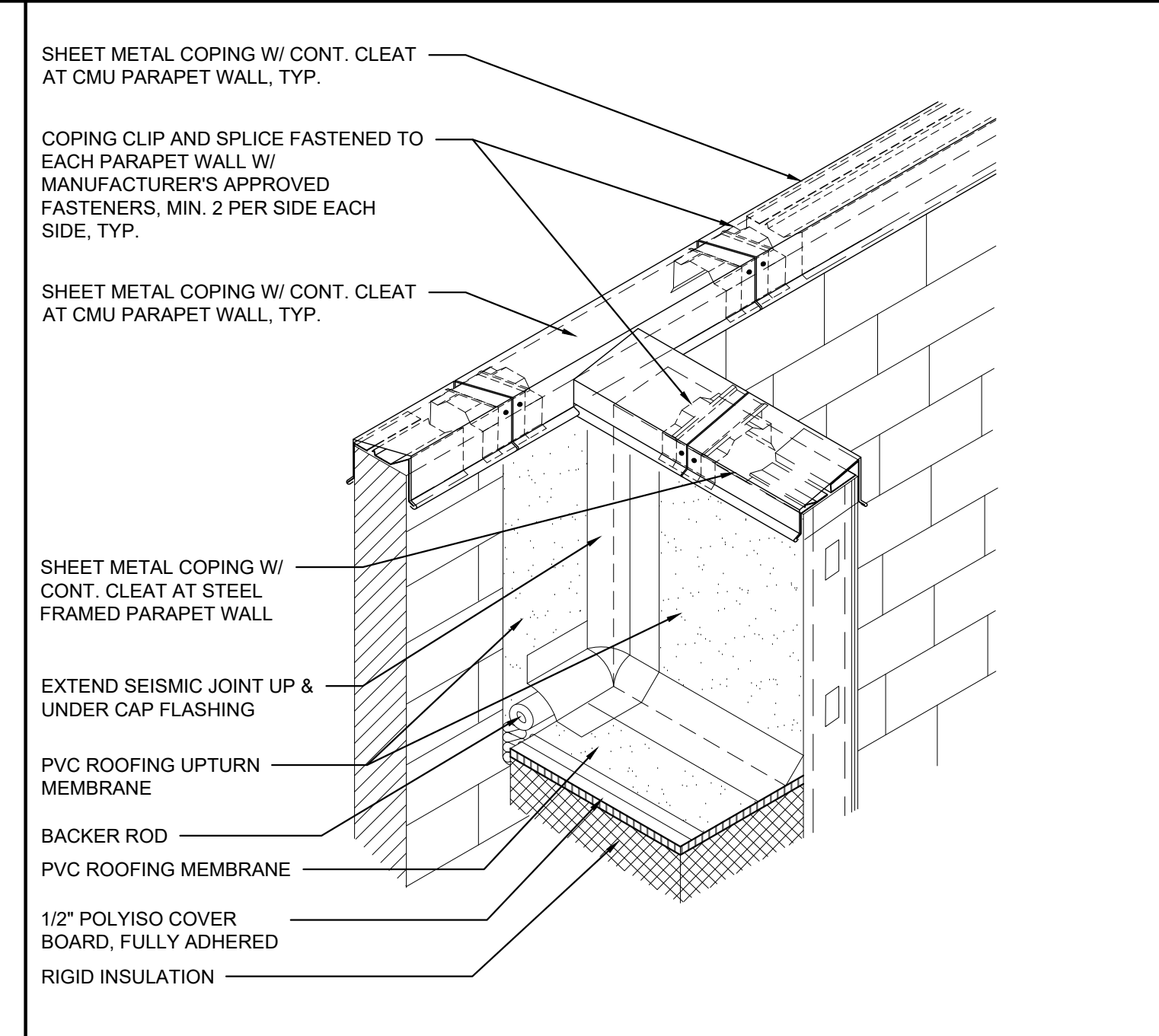
**A-2.1**



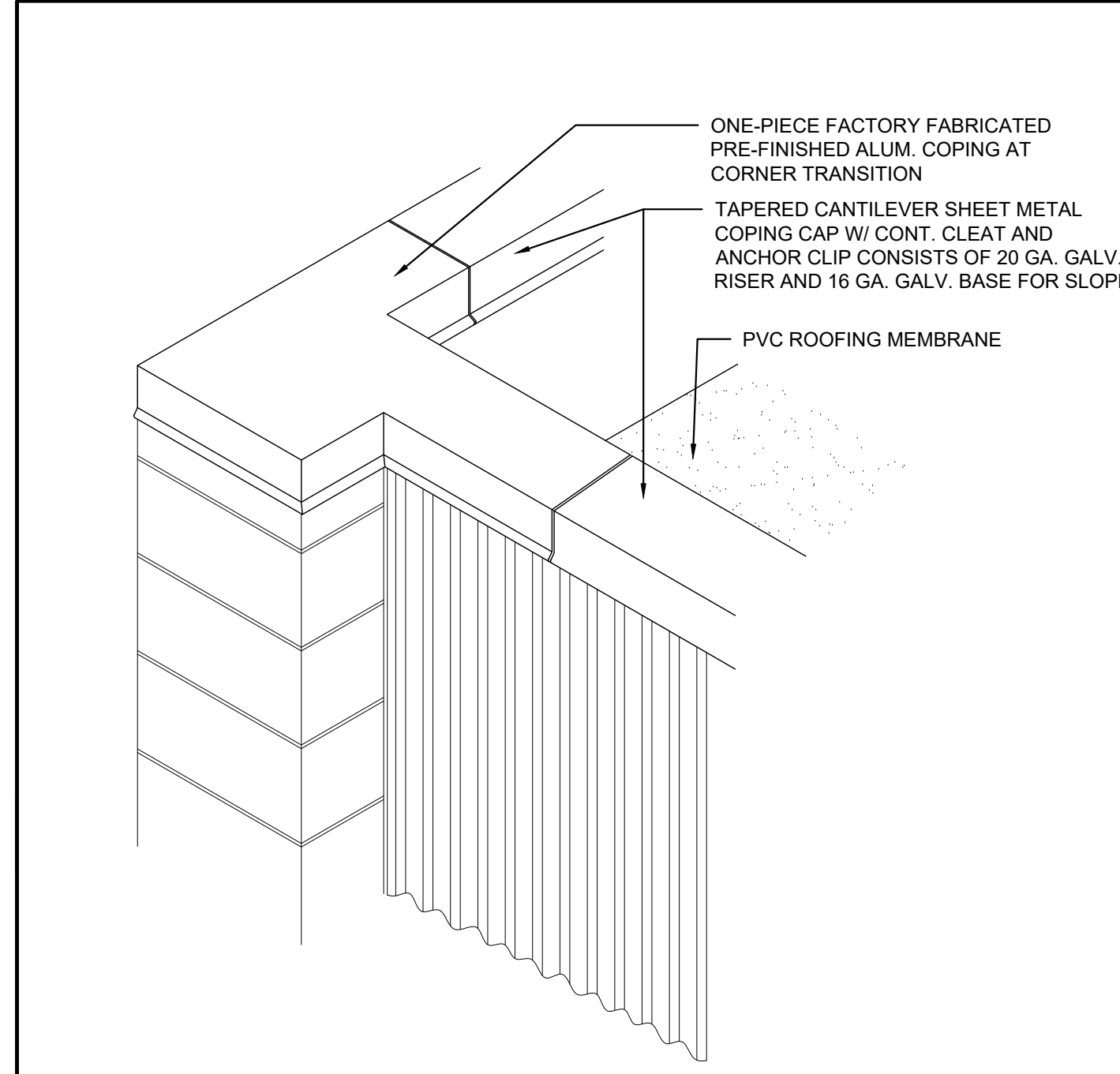
**9** PARAPET CORNER TRANSITION  
NTS



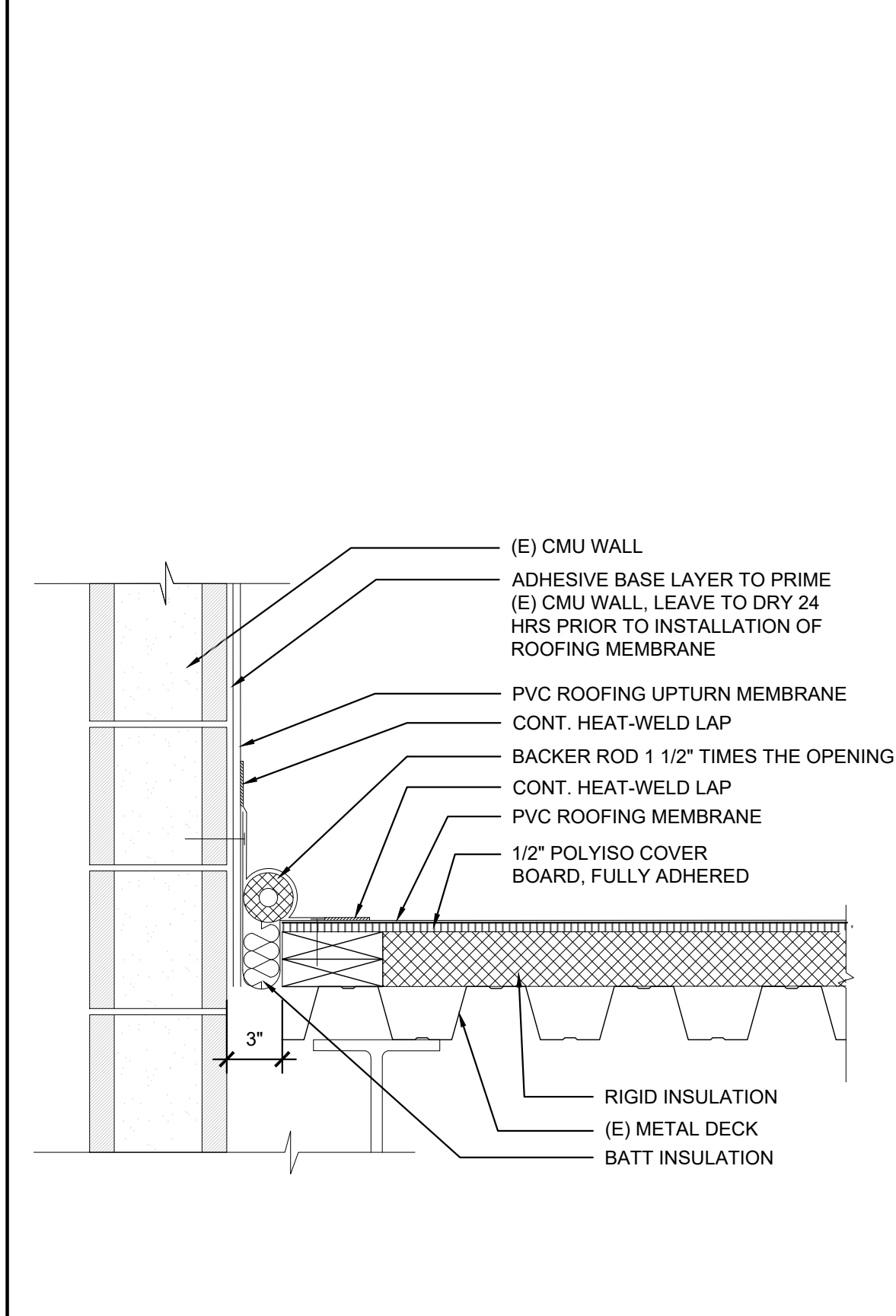
**10** PARAPET EJ TRANSITION  
NTS



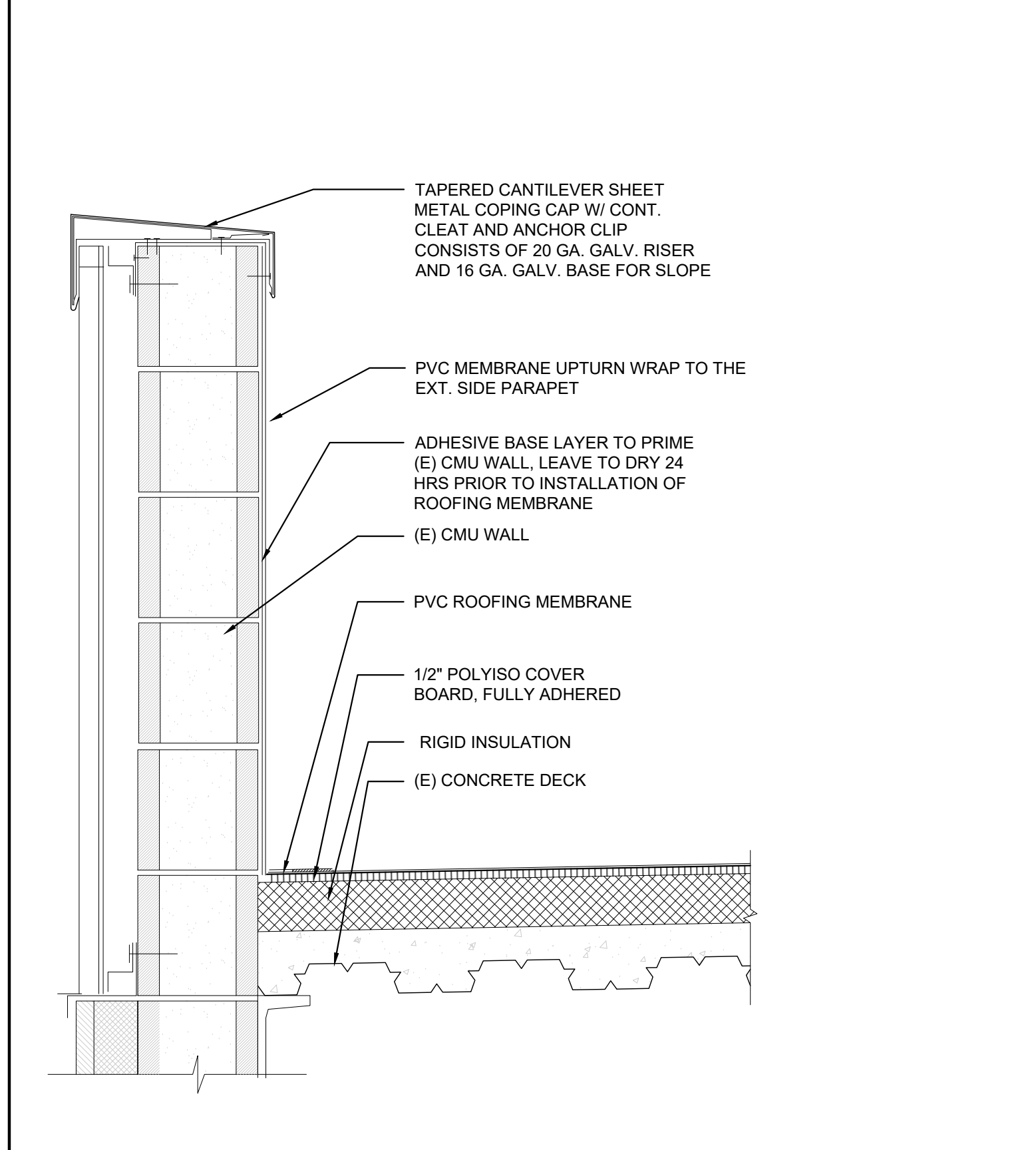
**11** SEISMIC JOINT AT PARAPET  
NTS



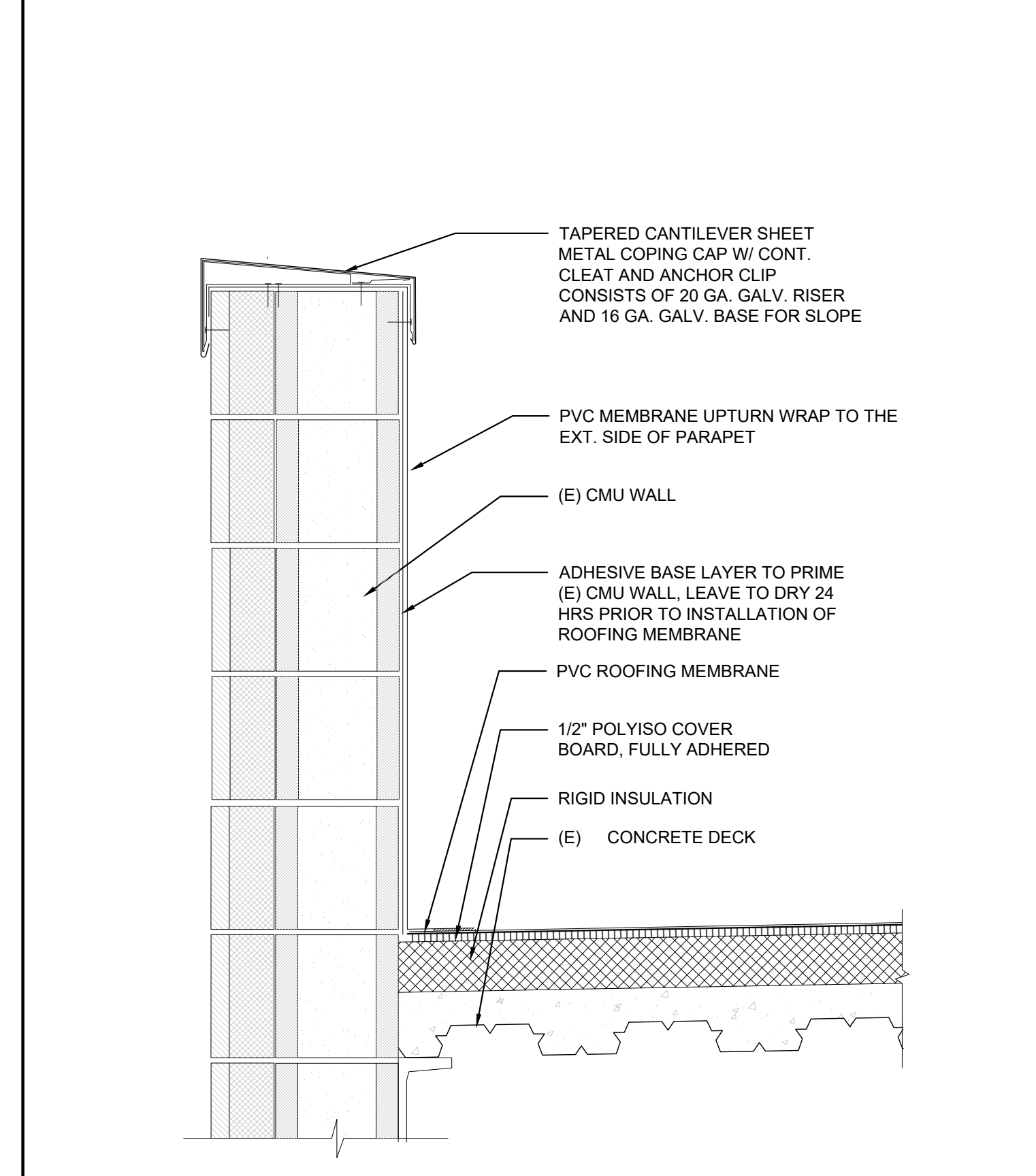
**12** COPING AT CORNER TRANSITION  
NTS



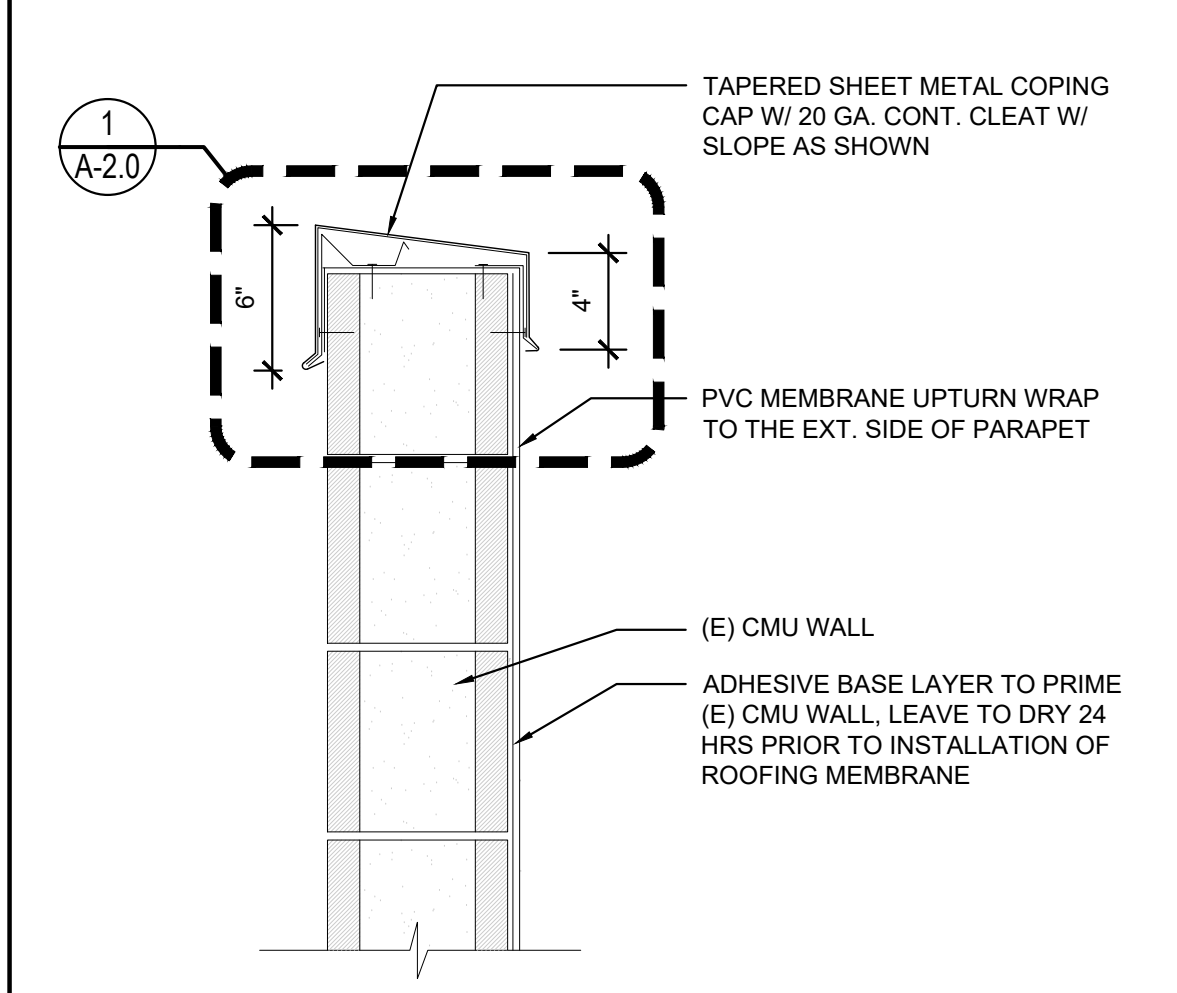
**5** SEISMIC JOINT COVER  
NTS



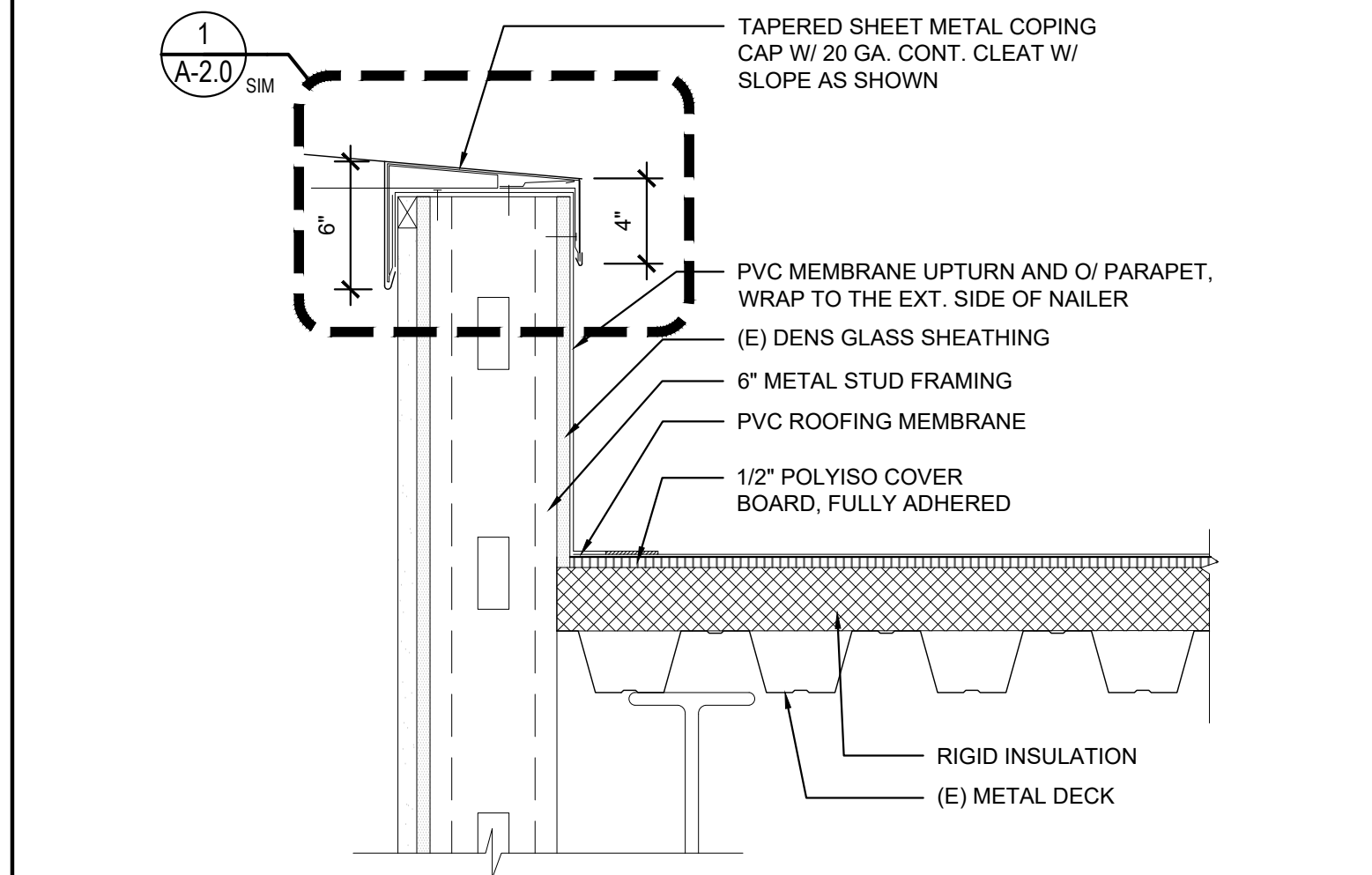
**6** PARAPET AT METAL PANEL  
NTS



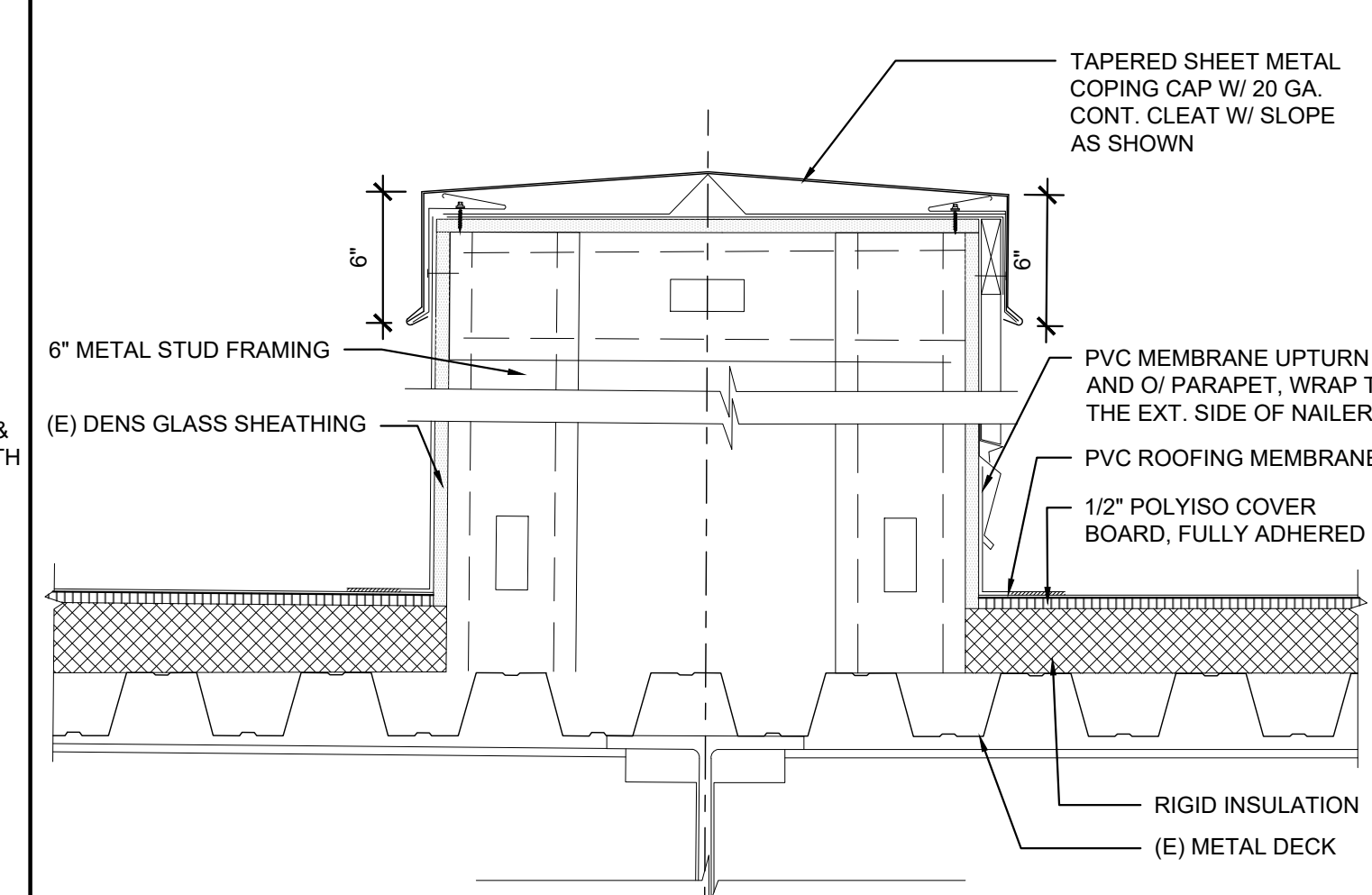
**7** PARAPET DETAIL  
NTS



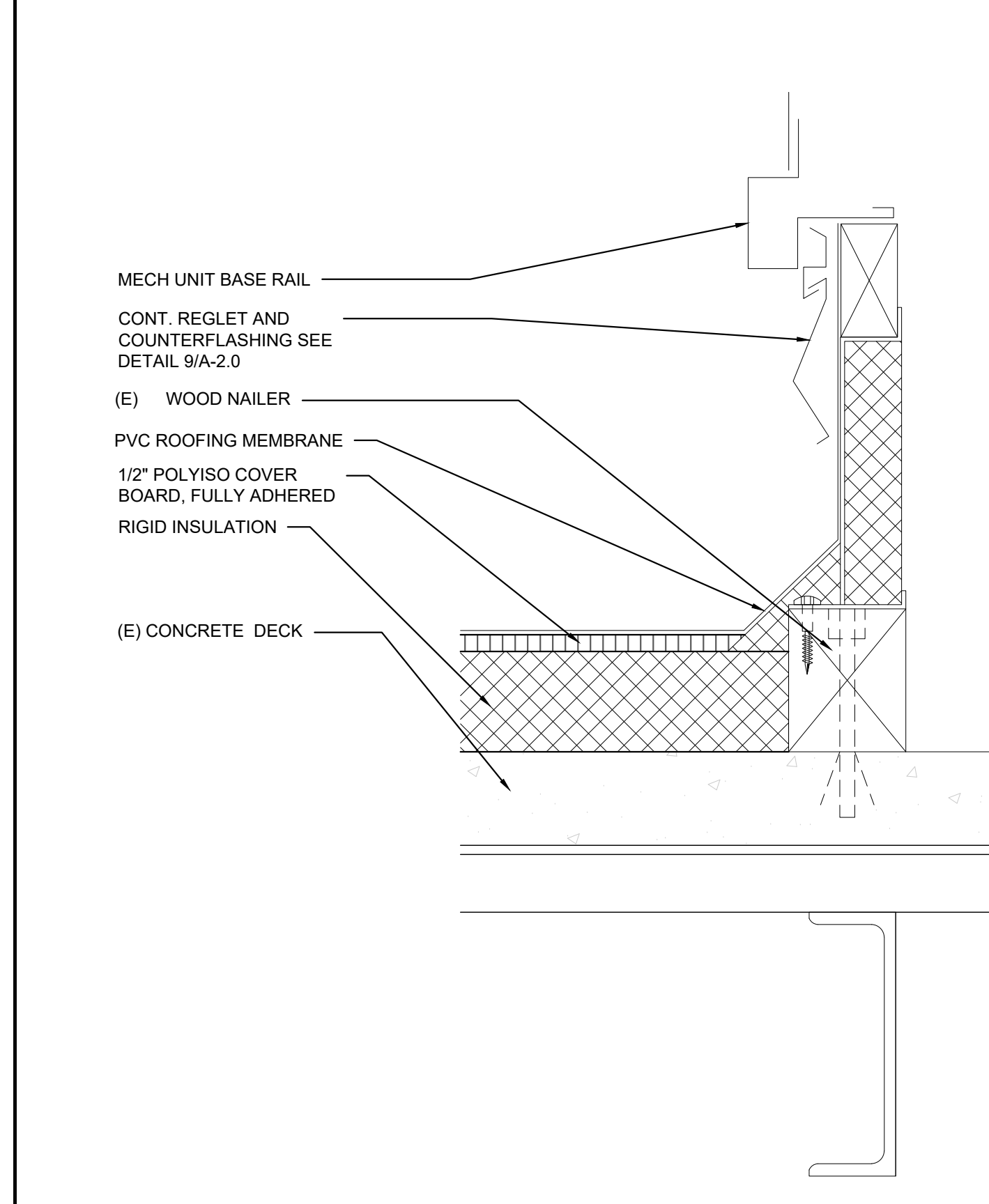
**1** ROOF COPING DETAIL  
NTS



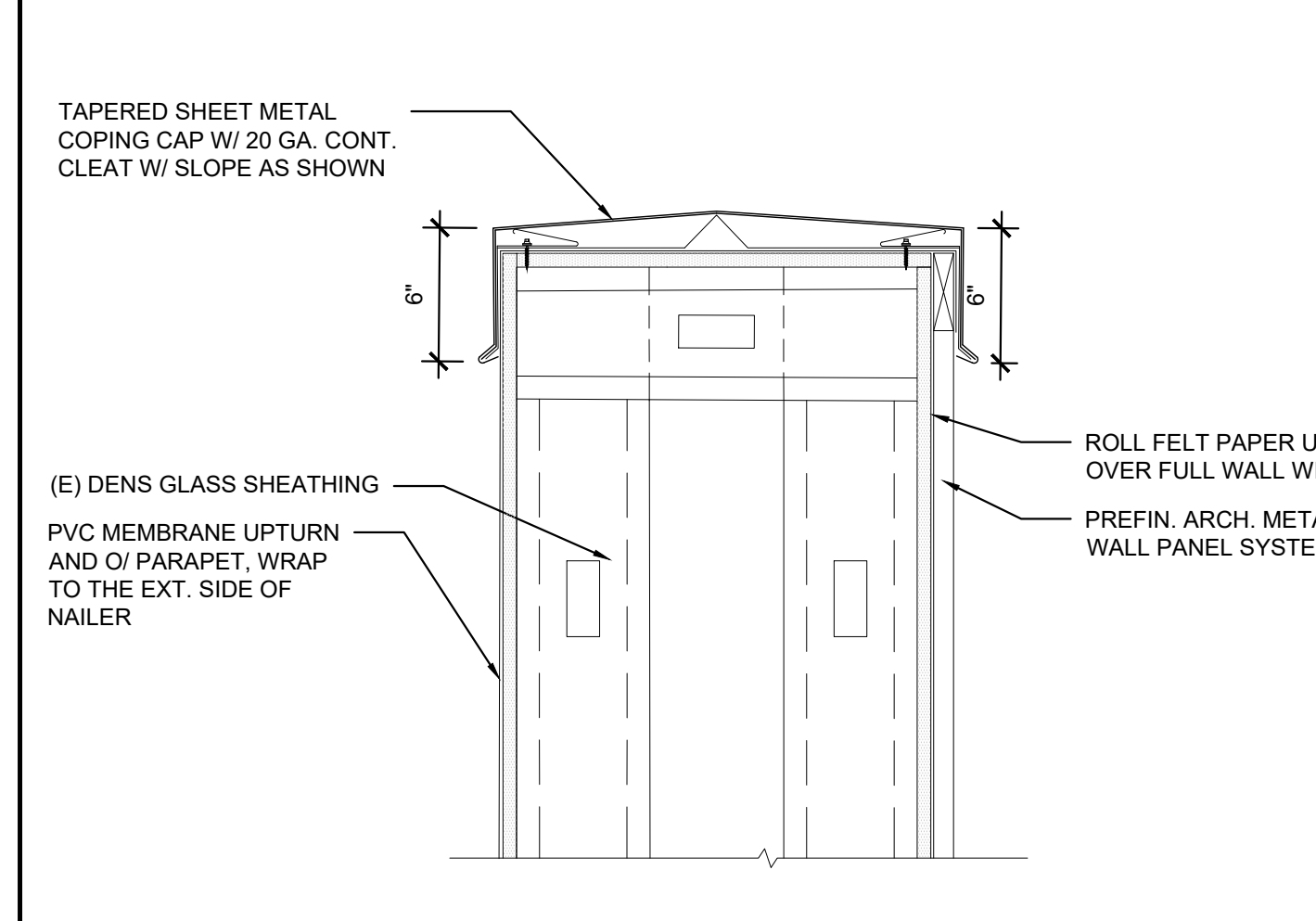
**2** ROOF COPING DETAIL  
NTS



**3** ROOF COPING DETAIL  
NTS



**8** MECHANICAL CURB DETAIL  
NTS



**4** PARAPET DETAIL  
NTS