

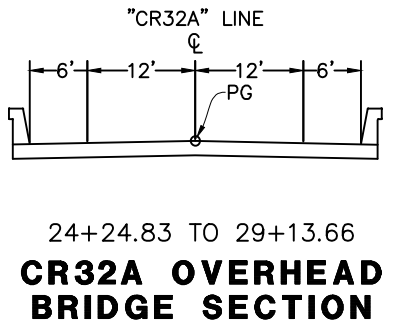
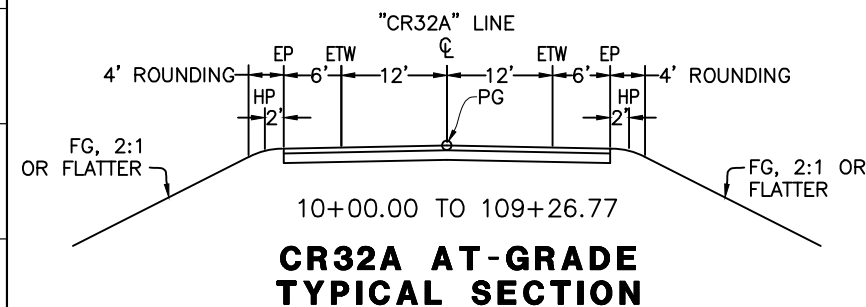
Dist	COUNTY	ROUTE	POST MILES TOTAL PROJECT	SHEET No.	TOTAL SHEETS
3	Yol	CR32A			X

REGISTERED CIVIL ENGINEER \_\_\_\_\_ DATE \_\_\_\_\_

PLANS APPROVAL DATE \_\_\_\_\_

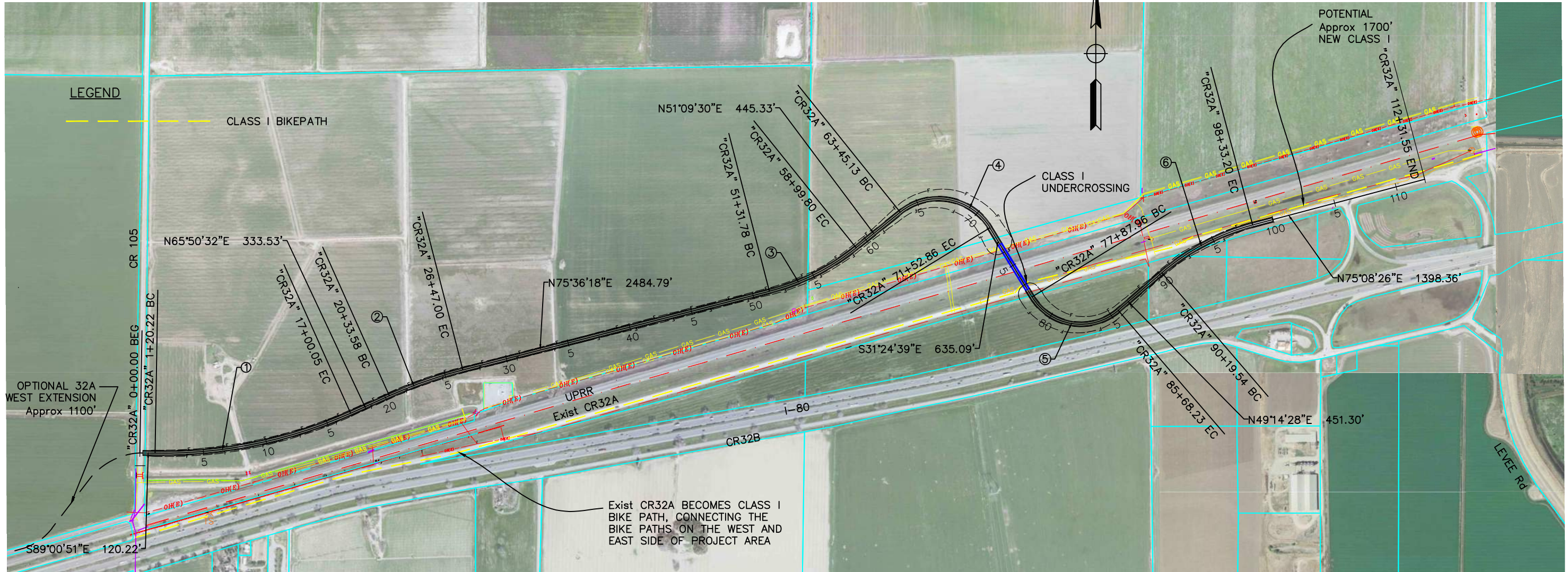
SUTTER COUNTY OR ITS OFFICERS OR AGENTS SHALL NOT BE RESPONSIBLE FOR THE ACCURACY OR COMPLETENESS OF SCANNED COPIES OF THIS PLAN SHEET.

**TYLIN INTERNATIONAL**  
1601 RESPONSE ROAD, SUITE 260  
SACRAMENTO, CA 95815



CURVE DATA

No. ①	R	Δ	T	L
1	3600.00	25° 08' 37"	802.84	1579.83
2	3600.00	09° 45' 46"	307.45	613.42
3	1800.00	24° 26' 48"	389.94	768.01
4	475.00	97° 25' 51"	540.98	807.73
5	450.00	99° 20' 54"	530.14	780.28
6	1800.00	25° 53' 58"	413.90	813.66



**PROJECTED ROW ACQUISITION**  
TOTAL : 68.9 ACRES  
ASSUMES FULL ACQUISITION OF REMNANT AREAS.

- ISSUES CONSIDERED**
1. ALIGNS NORTH OF THE GAS SUBSTATION AND DOES NOT CONFLICT WITH UTILITIES.
  2. AVOIDS IMPACTING MOST UTILITIES, EXCEPT MAY REQUIRE RELOCATING OVERHEAD POWER LINES.
  3. SHIFTS THE CR32A INTERSECTION SLIGHTLY NORTH.
  4. CROSSING IS LOCATED EAST TO ALLOW FOR A SMALL SKEW CROSSING. THIS RESULTS IN A SHORTER STRUCTURE LENGTH THAN Alt 1, BUT MORE ROADWAY.
  5. CLASS I BIKE PATH WILL BE EXTENDED APPROXIMATELY 1.8 MILES UP TO THE NEW CROSSING LOCATION USING THE EXISTING CR32A THAT WILL BE ABANDONED. THE PATH WOULD THEN PASS UNDER THE NEW CR32A ALIGNMENT AND THE REMAINDER OF THE BIKE PATH FROM THE OVERHEAD CROSSING TO THE CAUSEWAY WILL REMAIN A CLASS II UNTIL FURTHER DEVELOPMENT.

**ALTERNATIVE 8  
OVERHEAD  
CROSSING  
DS = 40 MPH**  
SCALE: 1" = 400'

REVISOR: JEFFREY HOGE, RASHOD GIBSON  
DESIGNER: HANS STRANDGAARD  
YOLCO COUNTY PUBLIC WORKS DIVISION