



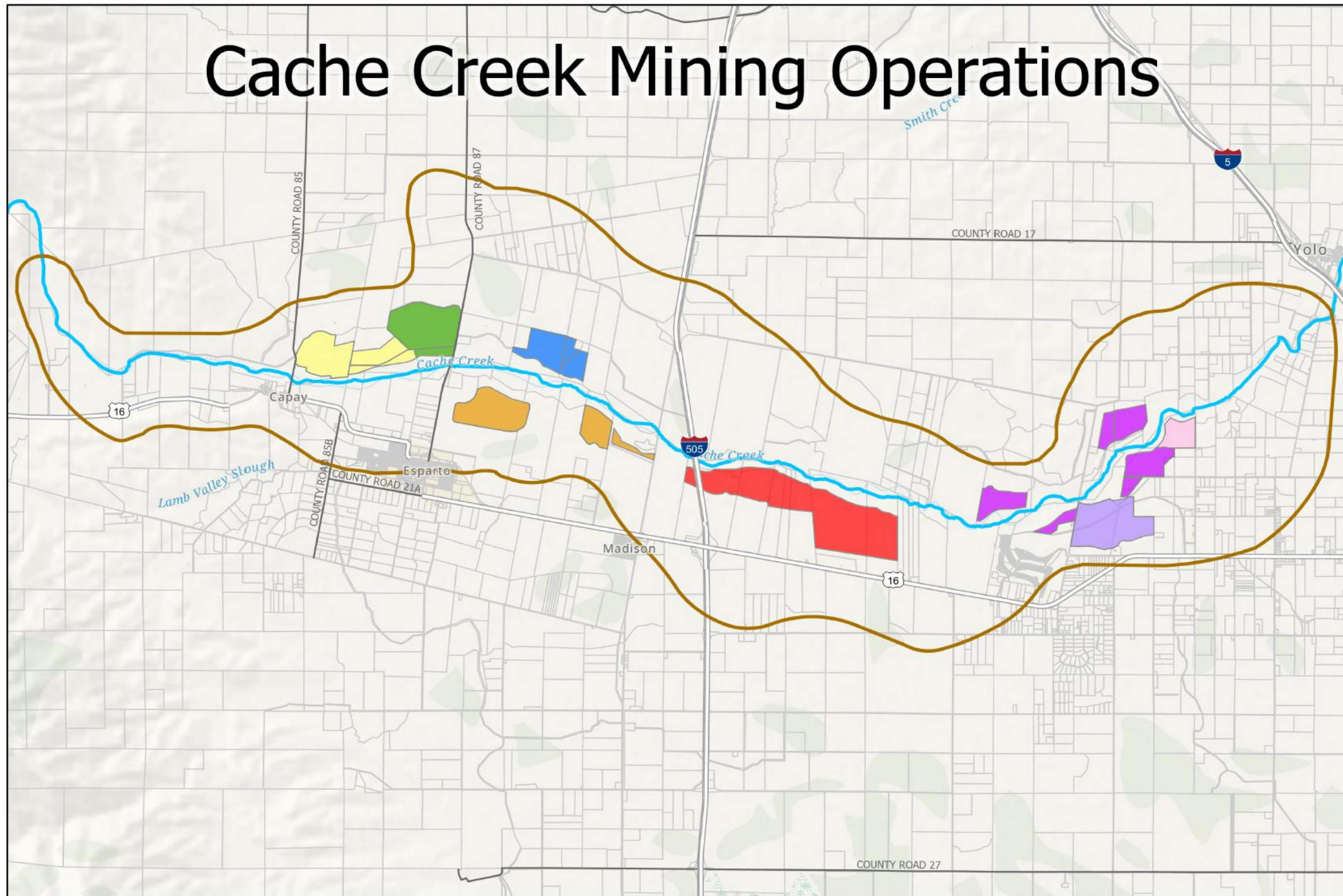
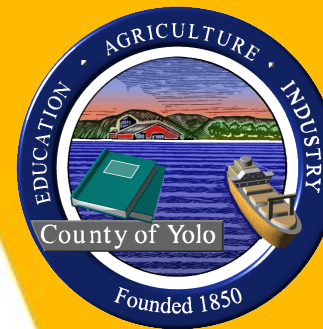
CEMEX Mining and Reclamation Plan Permit Amendment Project (ZF #2018-0015)

Agenda Item #43

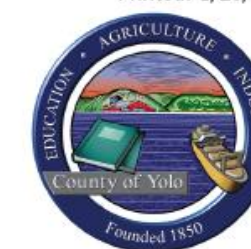
Yolo County Board of Supervisors
December 9, 2025

*Presented By:
Heidi Tschudin,
Contract Land Use Planner*

Cache Creek Mining Operations

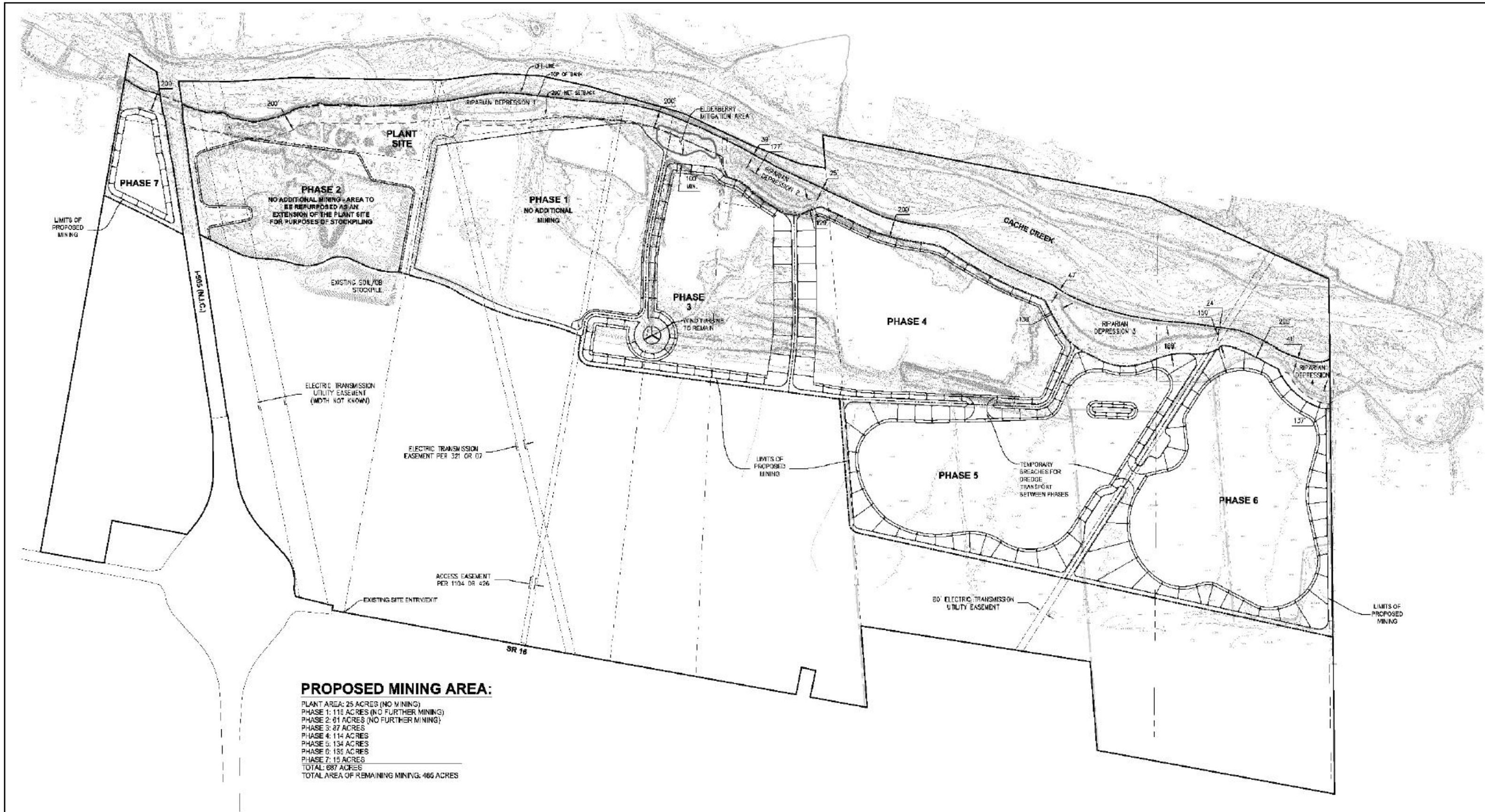
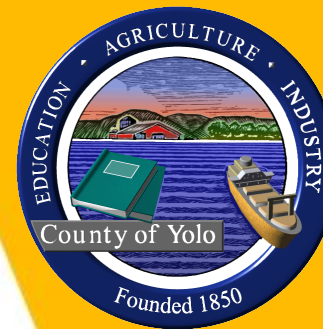


- | | | | |
|--------------------------------|--------------------------|------------------------|--------------------------------|
| Cache Creek | Mining Operations | Cemex | Syar - Madison Sand and Gravel |
| Cache Creek Area Plan Boundary | | Granite Capay | Teichert Esparto |
| Parcels | Granite Esparto | Teichert Woodland | Teichert Shifler |
| | | Teichert Schwarzgruber | |

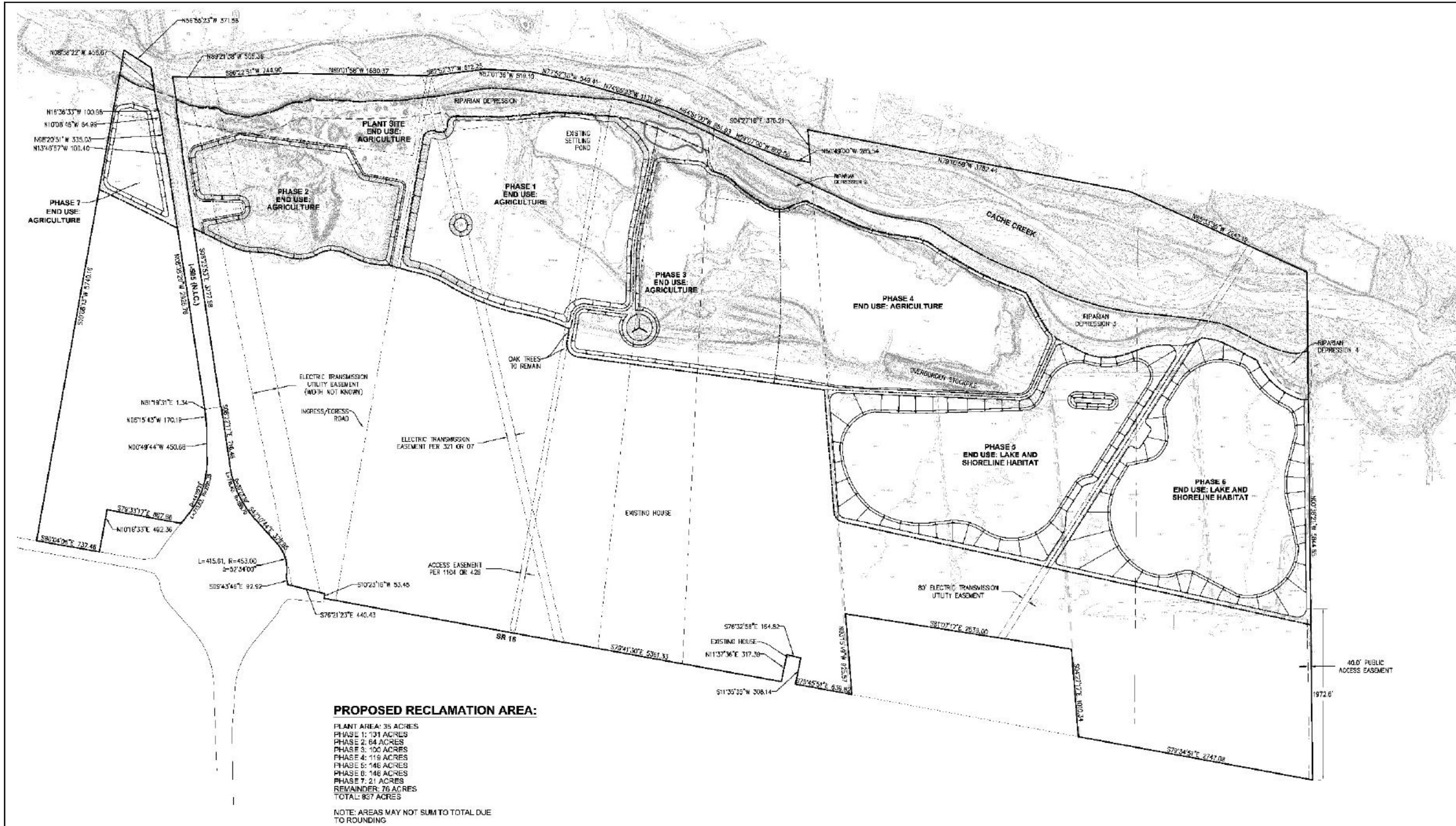


Printed: 1/28/2022

PROPOSED REVISED MINING PLAN



PROPOSED REVISED RECLAMATION PLAN



COMPARISON OF RECLAIMED USES

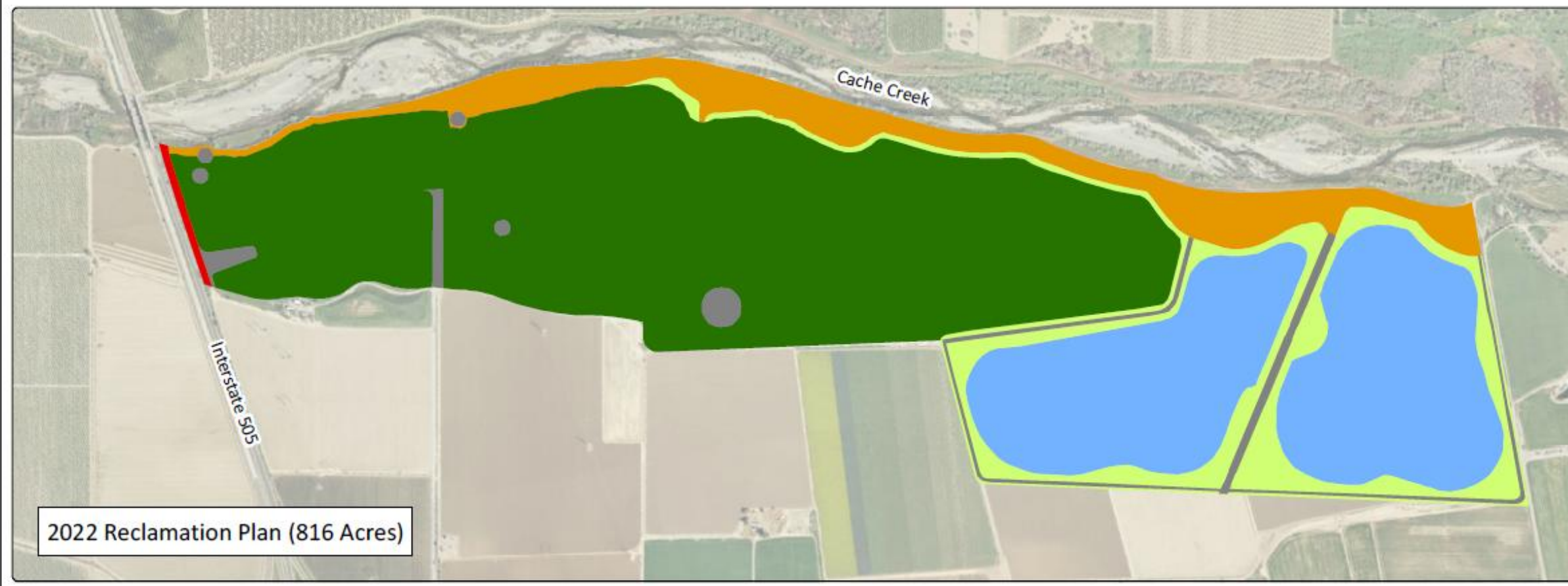
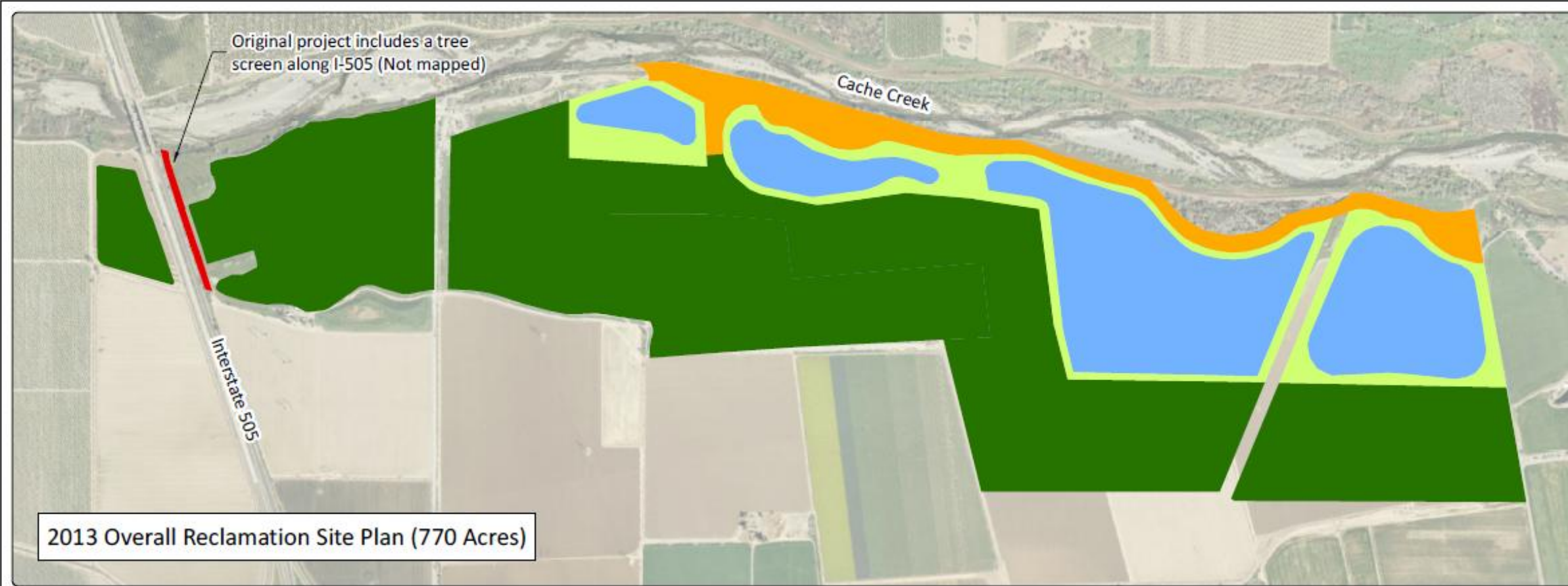
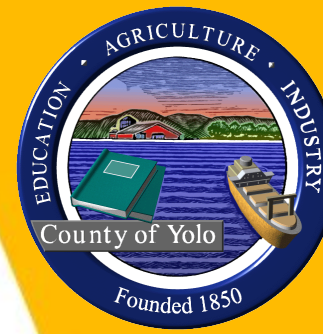


Figure 3-18
Comparison of Reclaimed Uses

CEMEX Cache Creek
Yolo County, California

End Use:

- Agriculture
- Habitat
- Habitat (No Phase)
- Lake / Pond
- Tree Screen
- Utility / Roads
- Utility

Note: 1) The 2013 Overall Reclamation Site Plan prepared by Benchmark Resources provides a general depiction of reclamation end uses but does not match the end use acreages approved under the existing entitlements.
 2) The 2022 Reclamation Plan map is based on the proposed Compass Reclamation Plan and Zentner Habitat Restoration Plan (2020). The reclamation footprint shown on the 2013 and 2022 maps are not a perfect match, but the 2022 map accurately reflects the proposed project end uses.

3/10/2025

Service Layer Credits: Source: Esri, Maxar, Earthstar Geographics, and the GIS User Community

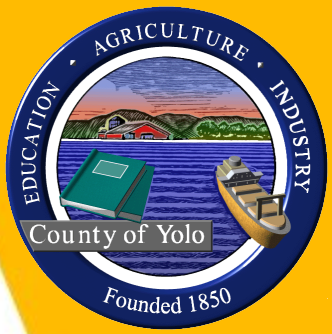
0 500 1,000 2,000 Feet

Disclaimer: The data was mapped for planning purposes only. No liability is assumed for accuracy of the data shown.

Prepared by: Sage Thurmond, Compass Land Group
 4235 Forcum Ave #100, McClellan Park, CA 95652

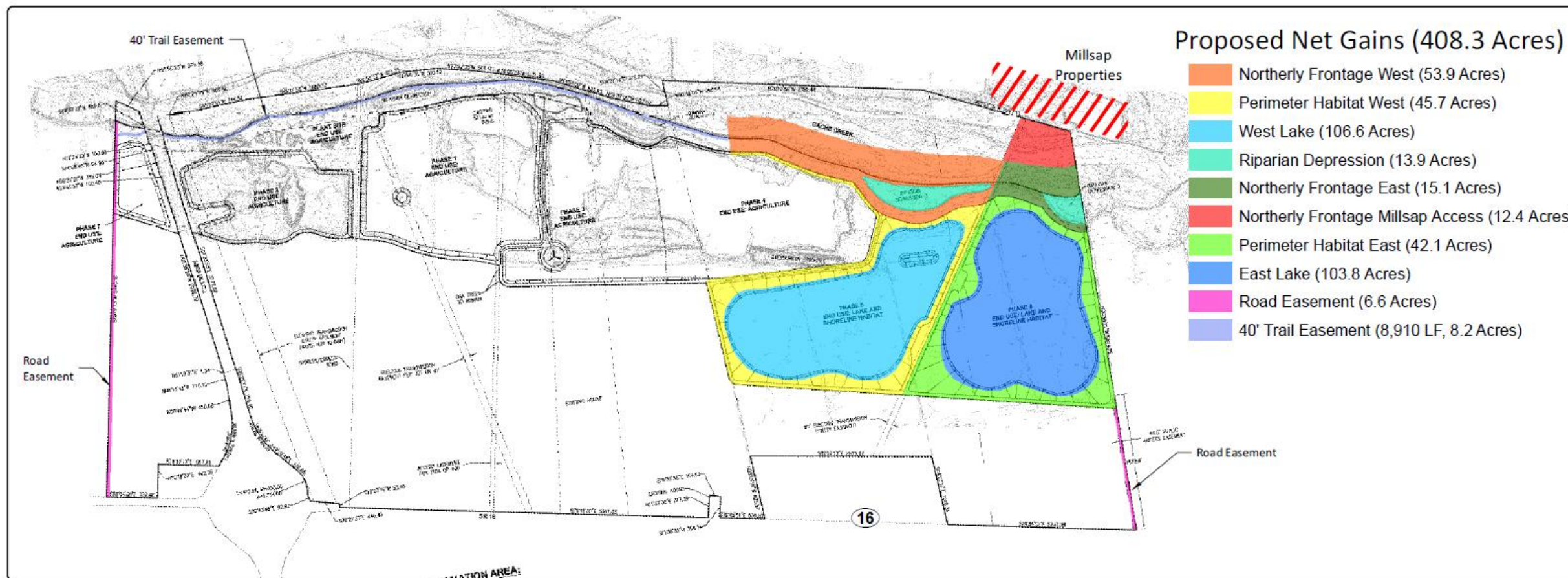
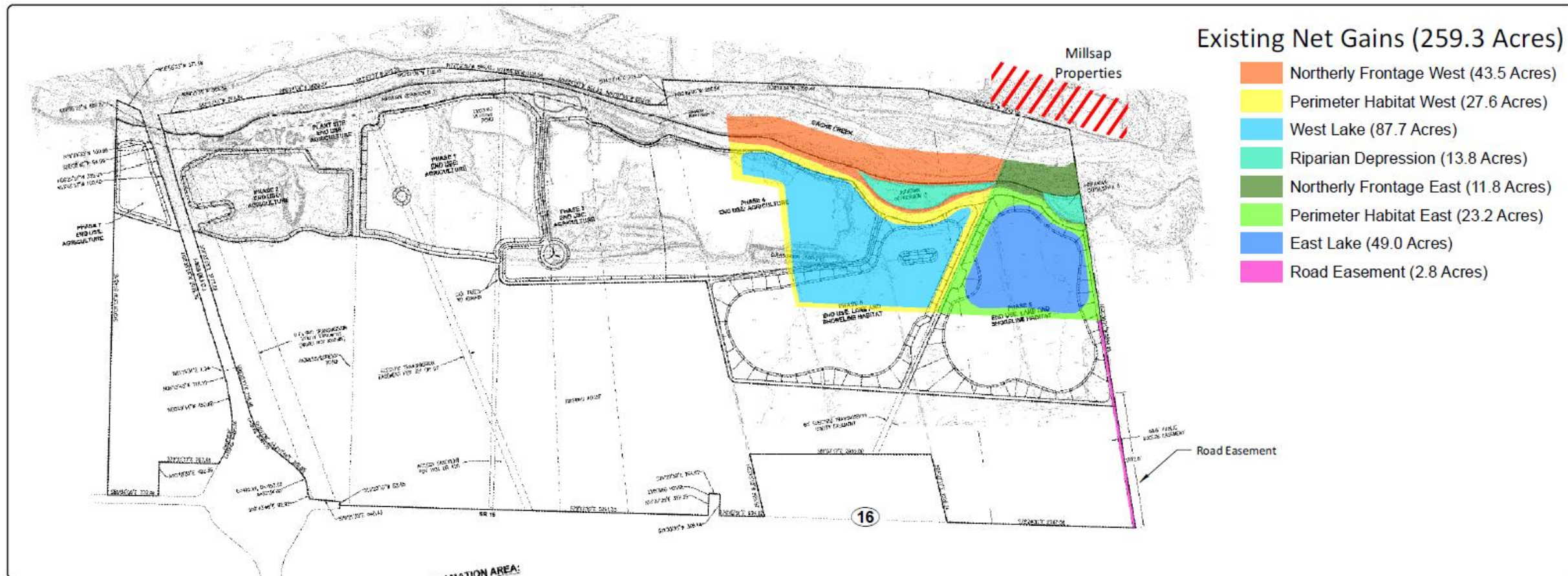
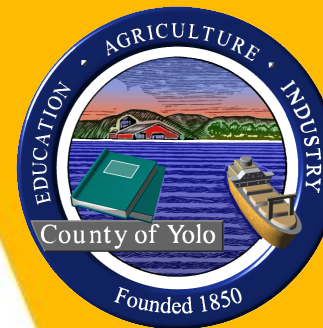
COMPASS LAND
 GROUP

DEVELOPMENT AGREEMENT / NET GAINS



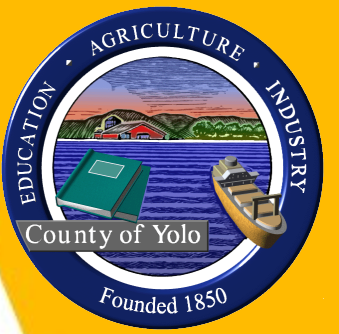
1. Lake and Perimeter Habitat
2. Eastern Road Easement
3. In-Channel Dedication to Centerline
4. In-Channel (Orrick/Snyder) Restoration
5. Dedication of Millsap Connector Property
6. Western Road Easement
7. Creekside Trail Easement
8. Monetary Support

COMPARISON OF NET GAINS



KEY TOPICS

- Methylmercury Management
- Climate Change and Greenhouse Gas Emissions
- Reclamation End Uses and CCAP Update



RECOMMENDATION

1. Certify Subsequent EIR
2. Make General Plan Circulation Element Consistency Finding
3. Amend Mining Permit No. ZF #95-093 and amend approved Reclamation Plan subject to mitigation measures and revised conditions of approval
4. Authorize execution of Amended Development Agreement No. 96-287

