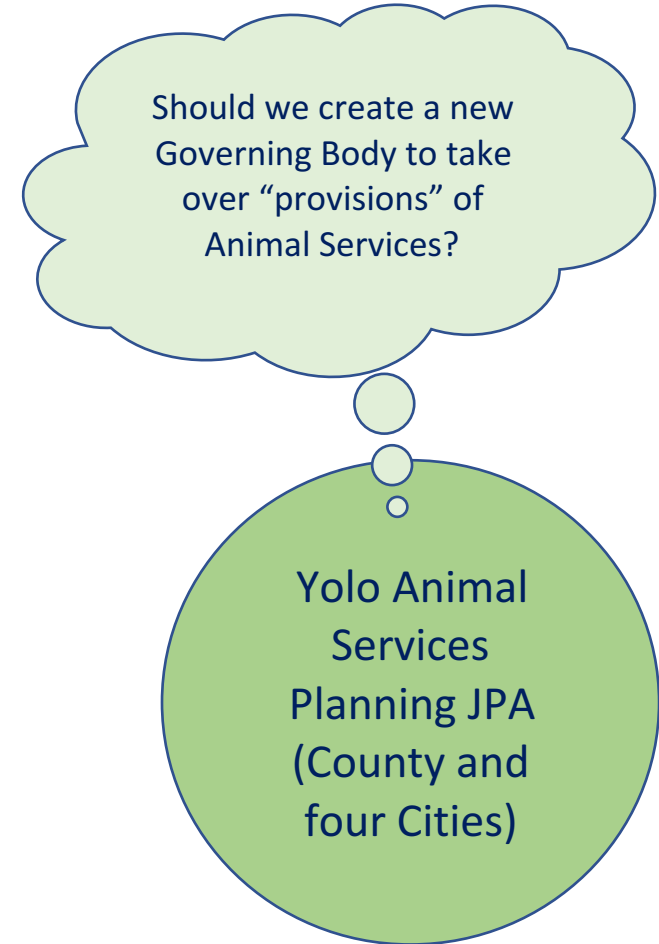
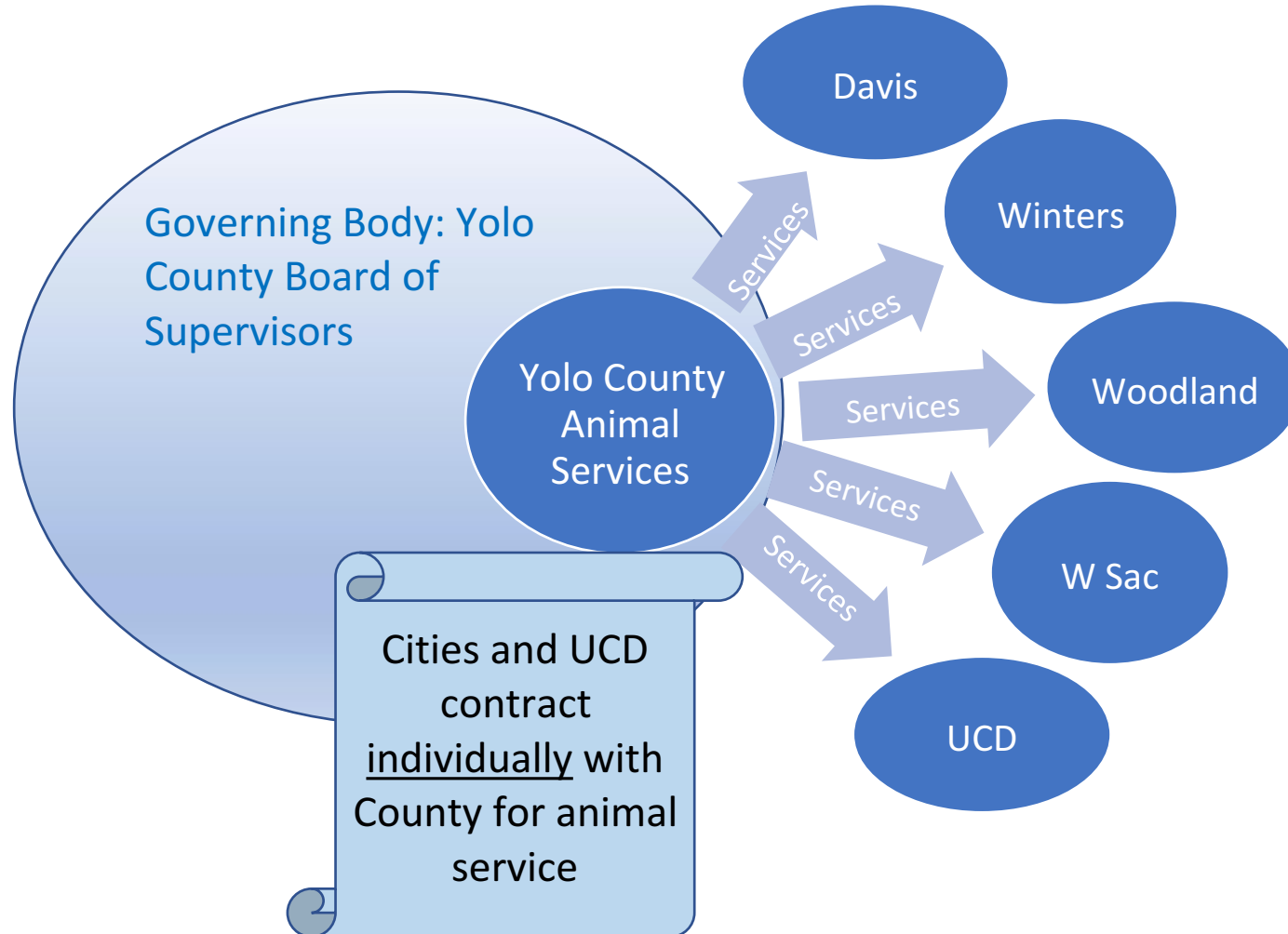
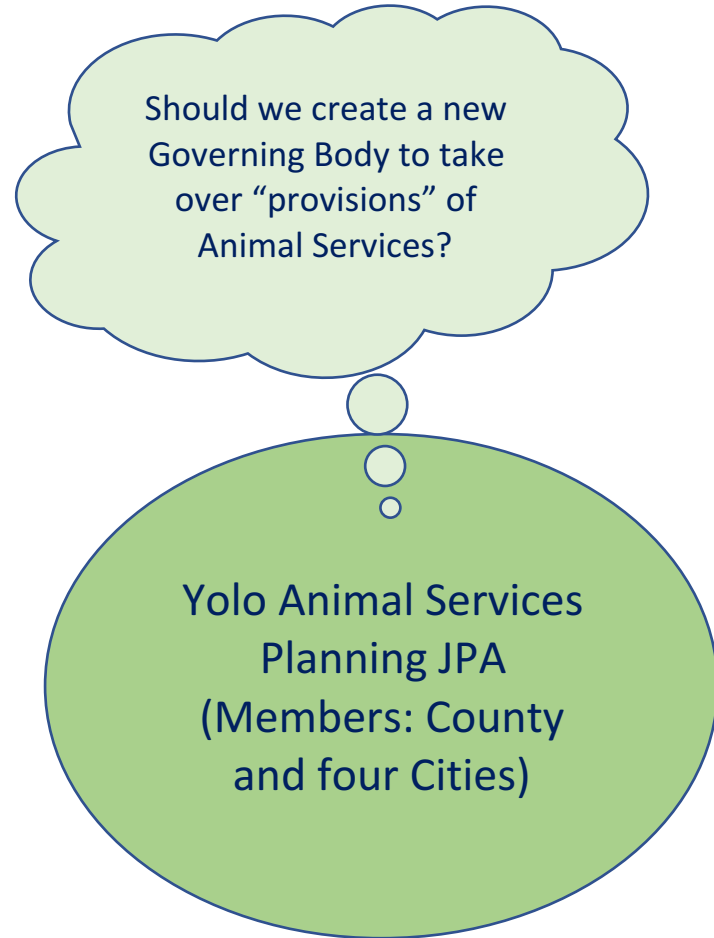


Animal Services Planning Agency JPA Purpose and Next Steps

Yolo County Animal Services and Agreements with the Cities and UCD as Compared to JPA role



What is the Planning JPA and What is it's Role?



- **Planning JPA Members:**
 - Cities of Davis, West Sacramento, Winters, Woodland and the County (does not include UCD)
- **Role:**
 - To consider whether or not to create an Operational JPA (new governing body) that would take over "Provisions" of Animal Services
- **Clarification:**
 - The Planning JPA has no role/authority over existing Agreements for services between County and Cities
 - Has no authority over Animal Services Operations, budget or facilities such as the shelter, and
 - Cannot direct the work of County staff.

Examples of “Provisions” of Animal Services?

Provisions are distinct services, such as:

General customer service

Picking up stray animals and deceased animals (e.g. roadside)

Patrol

Investigation animal abuse

Responding to complaints (e.g. barking dogs)

Bite complaint, rabies response, etc.

Responding to wild animal nuisance complaints

Sheltering stray animals / surrendered animals

Sheltering animals owned by incarcerated individuals

Shelter animal medical care, spay and neuter


Adoption services / licensing services

Community spay neuter / vaccination clinics

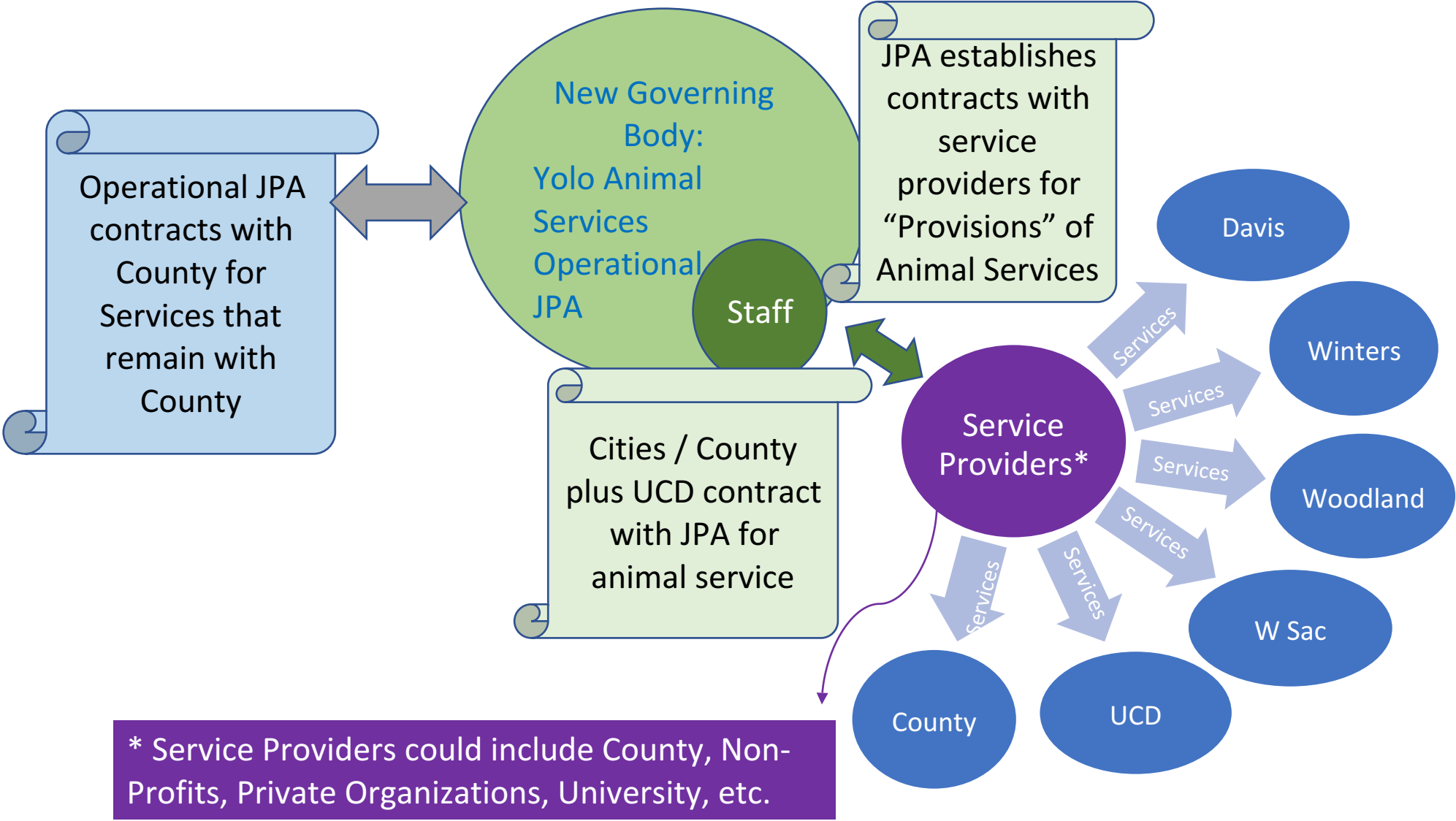
Building maintenance and capital improvements

One Example of an Operational JPA Model (Hybrid Approach)

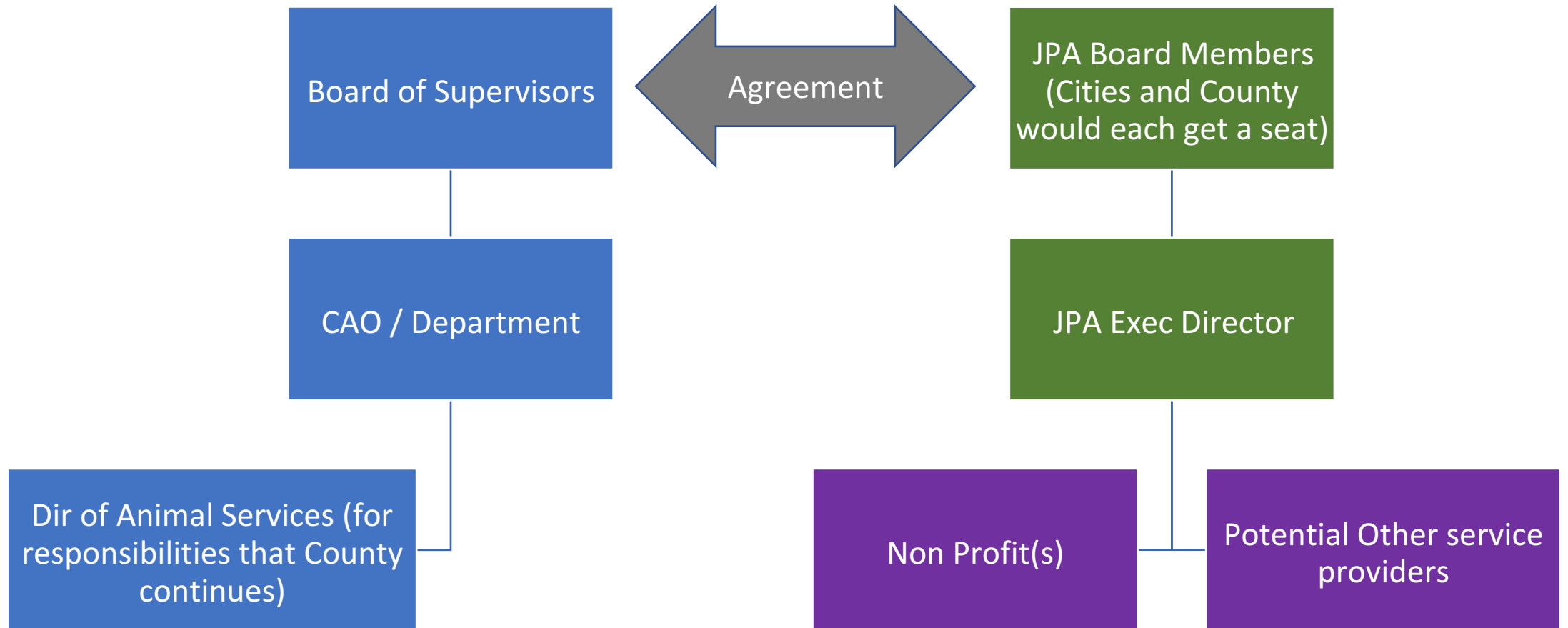
County Responsibility	JPA Responsibility (through contract with Non Profit)
Patrol	General customer service
Picking up stray and deceased animals	Sheltering stray and surrendered animals
Investigating animal abuse	Sheltering animals owned by incarcerated individuals
Bite complaint / rabies response	Responding to barking dog complaints
Wild animal complaints	Shelter animal medical care / spay / neuter
Building maintenance (existing building)	Adoption services
	Licensing services
	Community spay neuter
	Capital improvements (e.g. capital fundraising and future shelter)



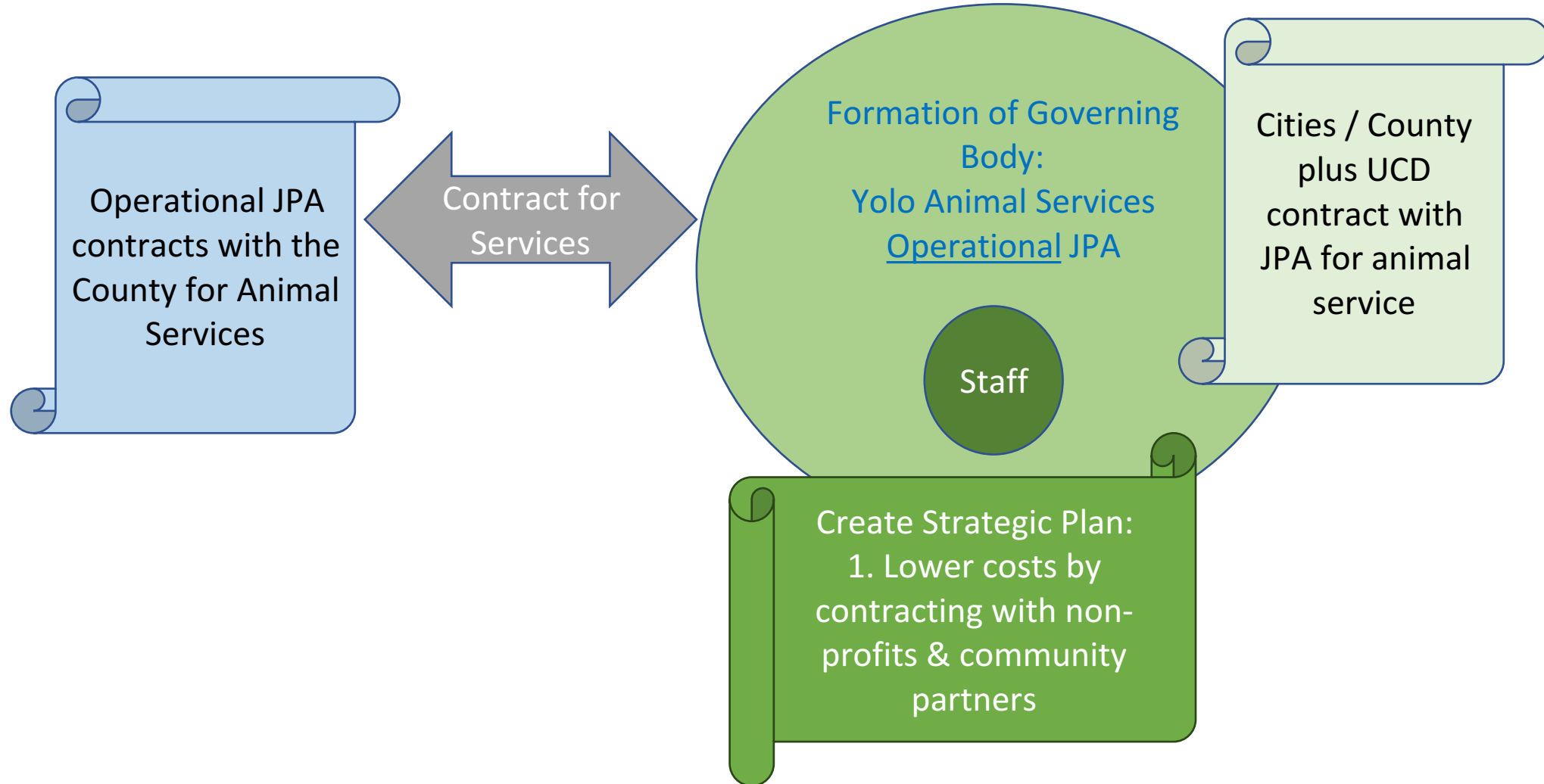
Graphical Example of the Hybrid Operational JPA Model



Potential Organizational Structure



Graphical Example: Baby Step Approach

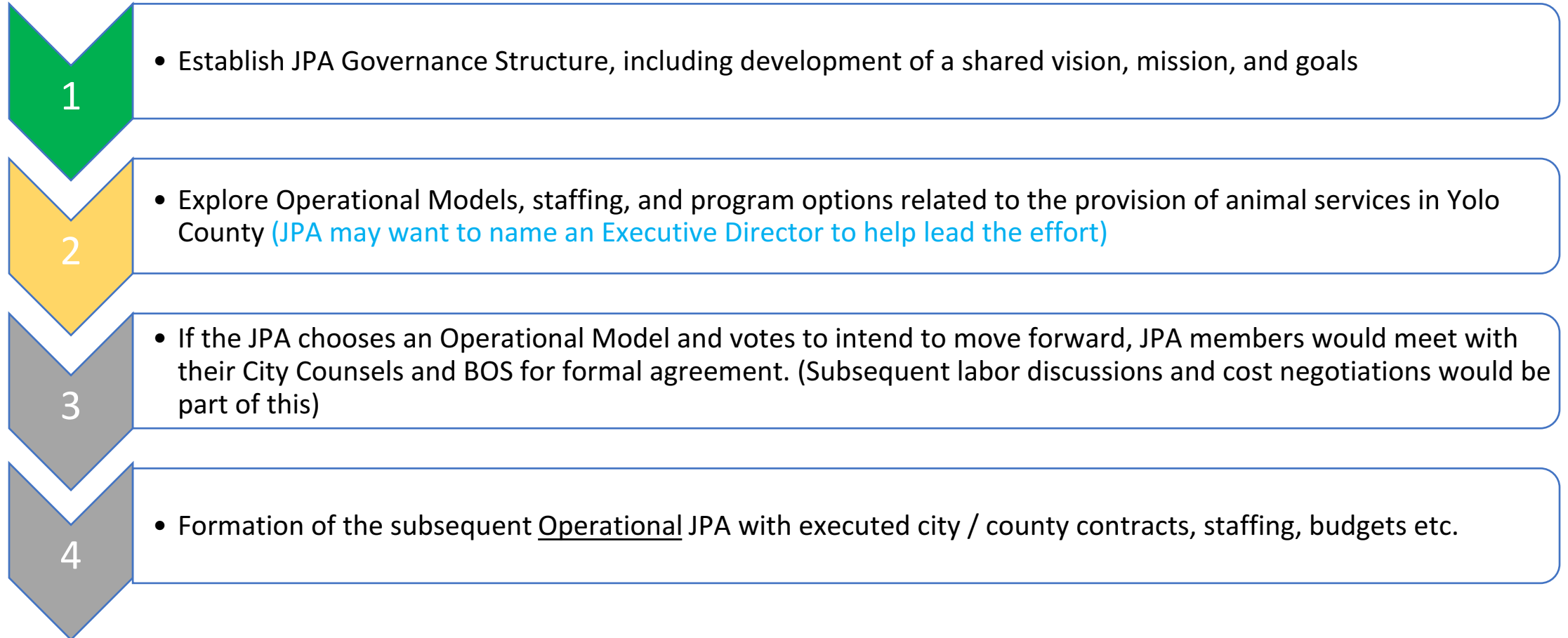


Reasons to do this?

- Operational JPA provides a **greater voice for each member agency**
- The Operational JPA would have **decision making authority over staffing, services, building improvements, and other costs**
 - NOTE: the above can happen as an Operational JPA with all services provided through the County (Baby Step approach), however the potential cost savings come with contracting with Non-Profit(s) for services
- Potential benefits cited in the KSMP / Yolo LAFCO Governance Study (2013) for privatization/JPA and contracting with non-profit:
 - **Cost savings** mainly due to lower salary and benefit rates for private/non-profit staffing verses County employee rates. However, the study also recommended the cost savings be applied to expanded staffing and programming. (page 9, 67 and 68)
 - Private / Non-Profit orgs have an advantage in their **ability to raise funds through grants, donations, and revenue generating enterprises** (page 12/13)

Animal Service Planning Agency JPA

Next Steps



Examples of Existing Operational JPA Models in Yolo County

- Yolo Habitat Conservancy (YHC)
- Yolo Emergency Communication Agency (YECA)
- Valley Clean Energy (VCEA)
- Yolo Sustainable Groundwater Agency (YSGA)
- Yolo County Public Agency Risk Management Insurance Authority (YCPARMIA)