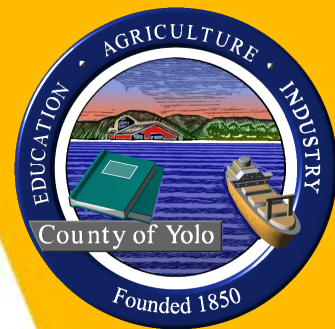


COUNTY ROAD 41

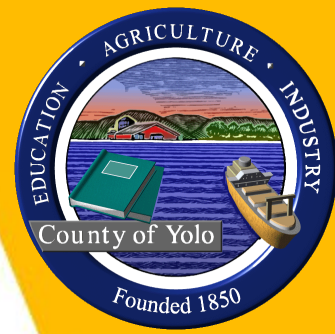
UPDATE

DEPARTMENT OF COMMUNITY SERVICES
TODD N. RIDDIOUGH, DIRECTOR OF PUBLIC WORKS



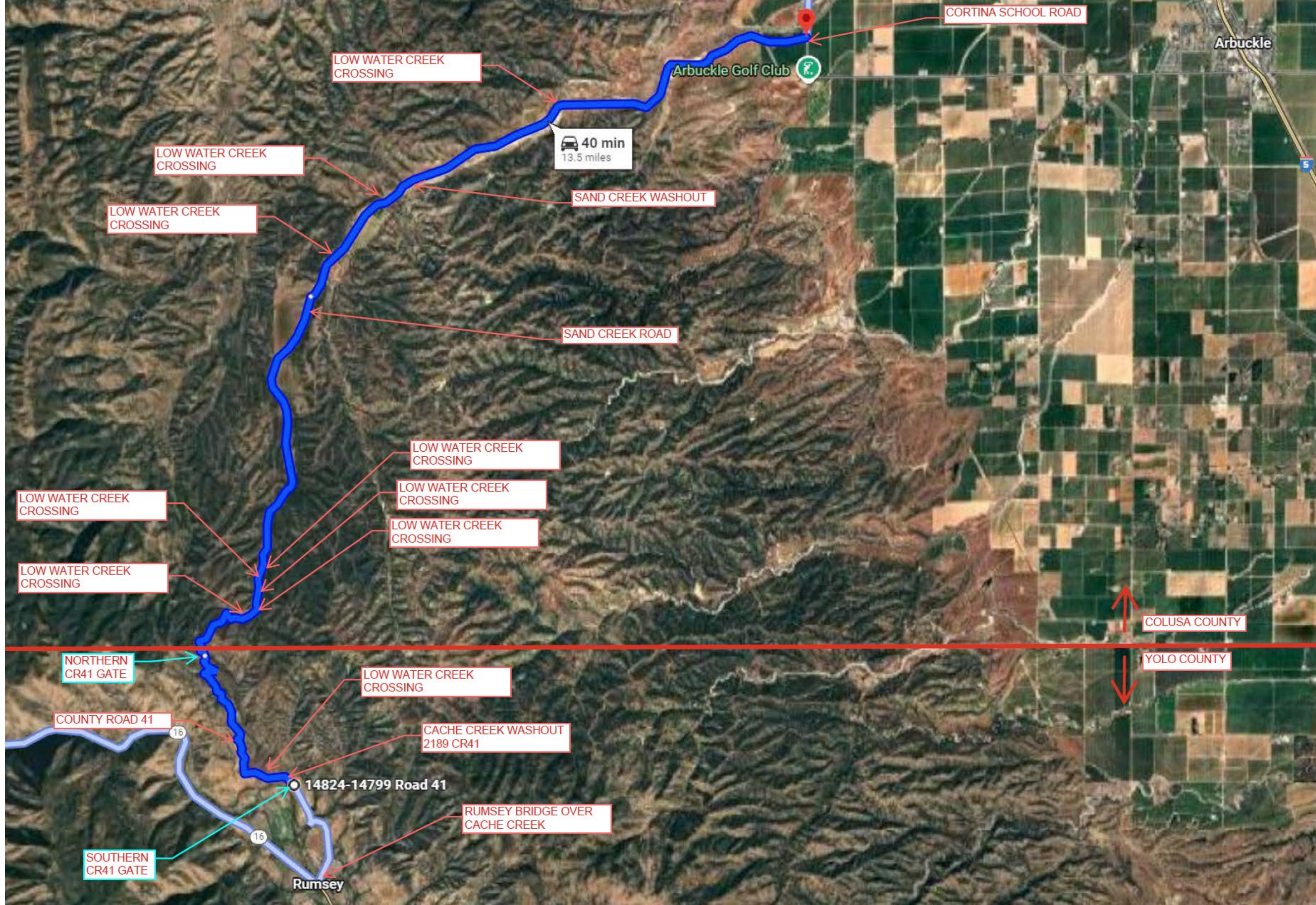
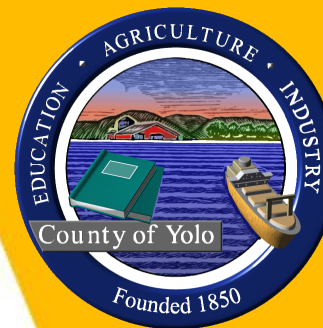
COUNTY ROAD 41 HISTORY

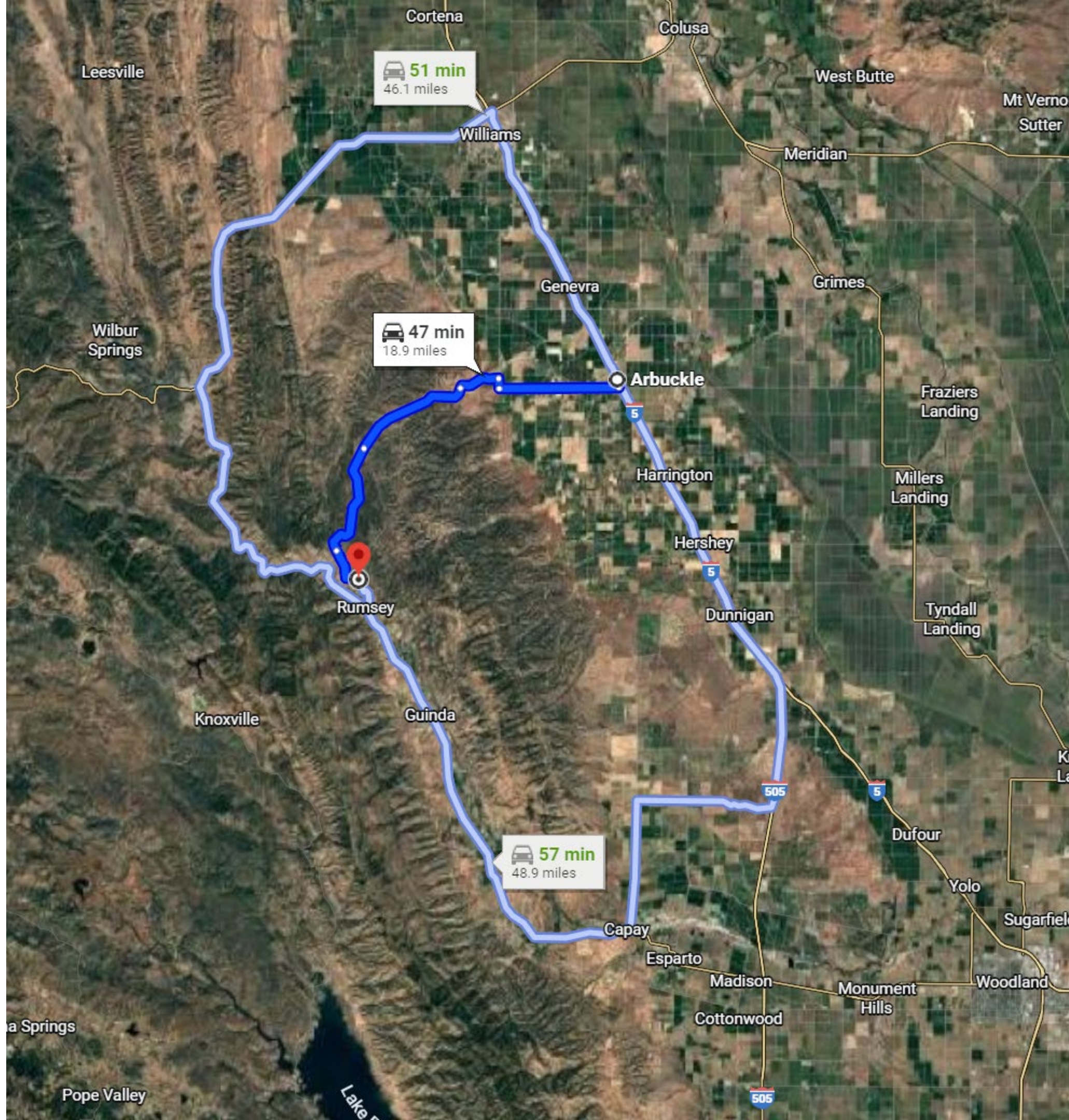
- Located between State Route 16 (west) and Colusa County (north)
- Paved road from State Route 16 (Rumsey) to the southernmost county gate
 - Includes Rumsey Bridge (CR41 Bridge over Cache Creek), to be replaced starting this year
- Unpaved, gravel road, through rustic backcountry for the remaining 2 miles to the northernmost gate and the county line
- In 2009, the Board of Supervisors ceased maintenance on the gravel road section between the two gates as a cost saving measure

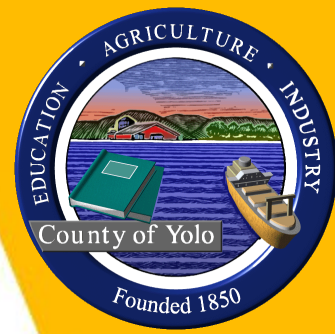


SAND CREEK ROAD, COLUSA COUNTY

- Continuation of County Road 41 across the county line, becomes Sand Creek Road
- Approximately 12 miles of winding road from the county line to the next viable road, Cortina School Road
- About 10 miles is gravel road, maintained about once per year by Colusa County PW
- About 2 miles is some form of pavement, repaired as needed by Colusa County PW
- Several water crossings
- Some areas of roadway are eroding due to creek action, similar to Cache Creek
- Cell coverage is weak to missing for most of the distance





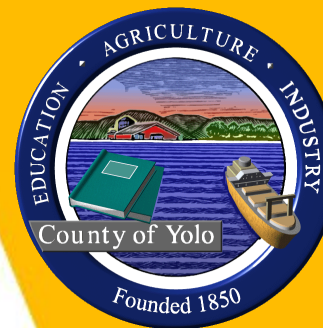


PARTNERS CONTACTED

- Capay Valley Fire Protection District
- Colusa County Public Works Department
- Williams Fire Department
- Arbuckle-College City Fire Department
- Yocha Dehe Wintun Nation
- Yolo County OES
- Current property owner of the most affected home on CR41



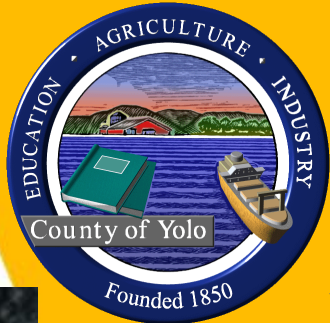
Cortina School Rd

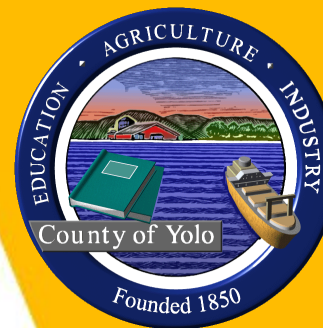


Sand Creek Rd



Sand Creek Rd





Sand Creek Rd Low Water Crossing





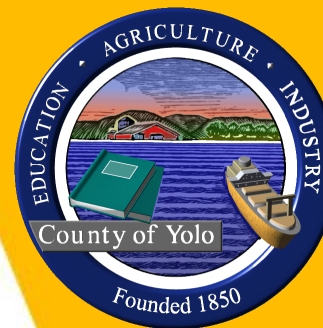
Sand Creek Rd



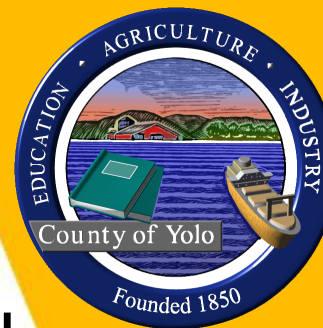


Sand Creek Rd



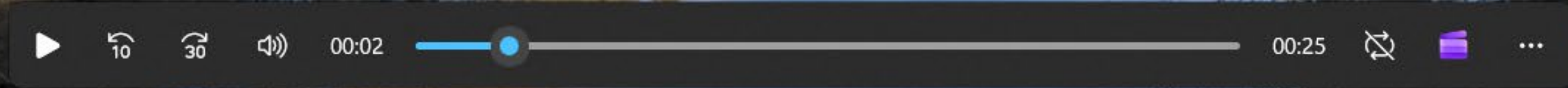


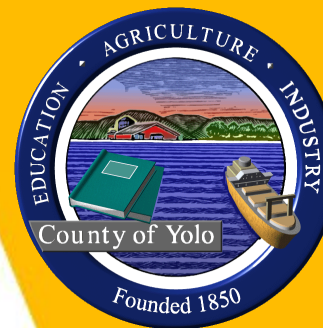
Sand Creek Rd



Sand Creek Rd







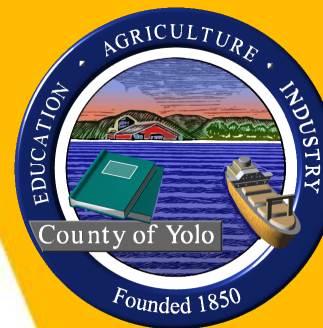
20 17





20 19

03/01/2019

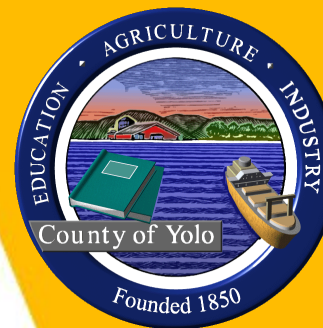


2025

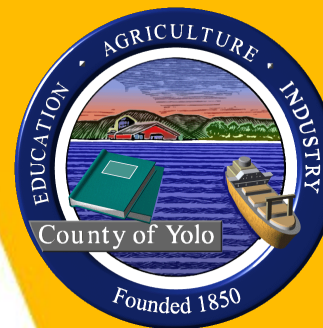




2016



2017



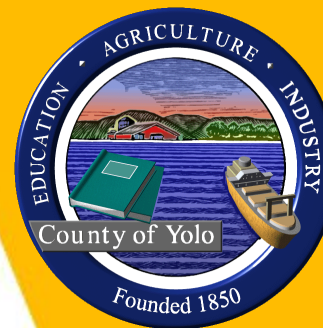
2023



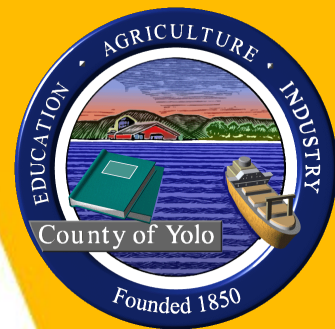
Image © 2025 Airbus

Google Earth

Imagery Date: 11/11/2023 38°54'18.72" N 122°14'43.55" W elev 431 ft eye alt 1542 ft



2023



2023

CR4 1 WASHOUT ALTERNATIVES MAP

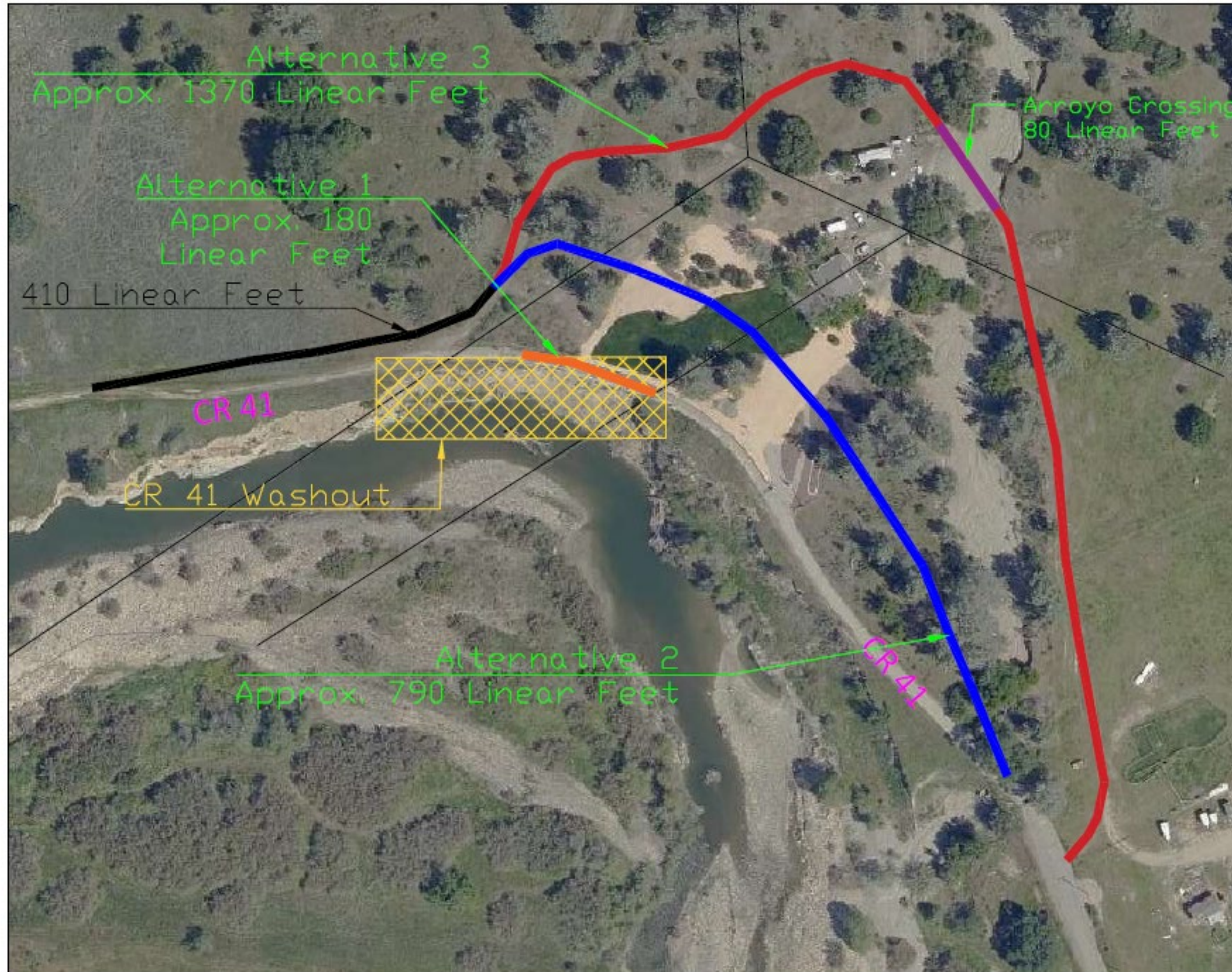
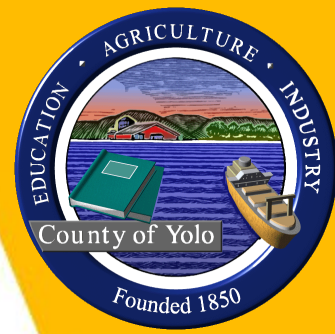




Figure 8: Risk of Continuing Erosion, Red = High, Yellow = Moderate

NEXT STEPS/ QUESTIONS/ DISCUSSION



- A. Continue to monitor Cache Creek erosion; revisit once Rumsey Bridge replaced
- B. Realign CR41 and keep gates locked
- C. Investigate full restoration of CR41 connectivity and use

