



Yolo Habitat Conservancy

County of Yolo • City of Davis • City of Winters • City of West Sacramento
City of Woodland • University of California, Davis

To: Lucas Frerichs, Chair
Members of the Board

From: Chris Alford
Interim Executive Director

Re: Hold a public hearing on a proposed policy update and associated fee adjustment related to Yolo HCP/NCCP riparian mitigation responsibilities, approve reverting responsibilities associated with valley foothill riparian mitigation to the Conservancy, and adopt a resolution increasing the per acre valley foothill riparian fee to \$132,462 per acre

Date: January 26, 2026

REQUESTED ACTIONS:

1. Hold a public hearing on proposed policy updates and associated fee adjustments relating to Yolo HCP/NCCP riparian mitigation;
2. Approve reversion of responsibilities associated with valley foothill riparian mitigation to the Conservancy, as originally contemplated in the Yolo HCP/NCCP;
3. Adopt a resolution increasing the per acre valley foothill riparian fee to \$132,462 per acre to account for the Conservancy's increased site preparation and planting responsibilities (Attachment B)

BACKGROUND:

The original Yolo Habitat Conservation Plan/Natural Community Conservation Plan (Yolo HCP/NCCP) cost model assumes that the Yolo Habitat Conservancy is responsible for all valley foothill riparian plantings within the reserve system except for the planting of mature elderberry transplants, which are the responsibility of the applicable project proponent. On September 20, 2021 the Board, at the recommendation of the Executive Director at that time, approved a revision to the roles and responsibilities associated with valley elderberry longhorn beetle (VELB) mitigation and associated valley foothill riparian plantings such that project proponents would be responsible for restoration site preparation and all mitigation plantings and adopted a resolution that included a reduction in the valley foothill riparian land cover fee as a result of the shift in responsibilities. The stated reasoning for this action was to reduce the per acre fee for projects and to reduce the administrative burden related to coordinating roles and responsibilities for planting the elderberry shrubs and required native associate plants for each project from two parties to one.

The approach approved on September 20, 2021 has resulted in logistical challenges including an increased administrative burden and planning complexity when multiple individual project proponents are responsible for planting within separate portions of a single restoration site within the same season, resulting in a piece-meal approach to mitigation that the HCP/NCCP is intended to avoid. The Conservancy has also had to conduct more extensive and costly post-planting management for invasive species due to the timing constraints for site preparation imposed by this approach and has less ability to ensure that plants selected are of local ecotypes and are suitable species for the specific site. For these reasons, Conservancy staff now recommend that the Board revert the responsibility of valley foothill riparian mitigation planting back to the Conservancy to allow more comprehensive and efficient restoration implementation and approve increasing the valley foothill riparian wetland fee as described in the attached fee memo (Attachment A). Both the revised approach and the resulting per acre fee amount are comparable to other HCP/NCCPs in the region.

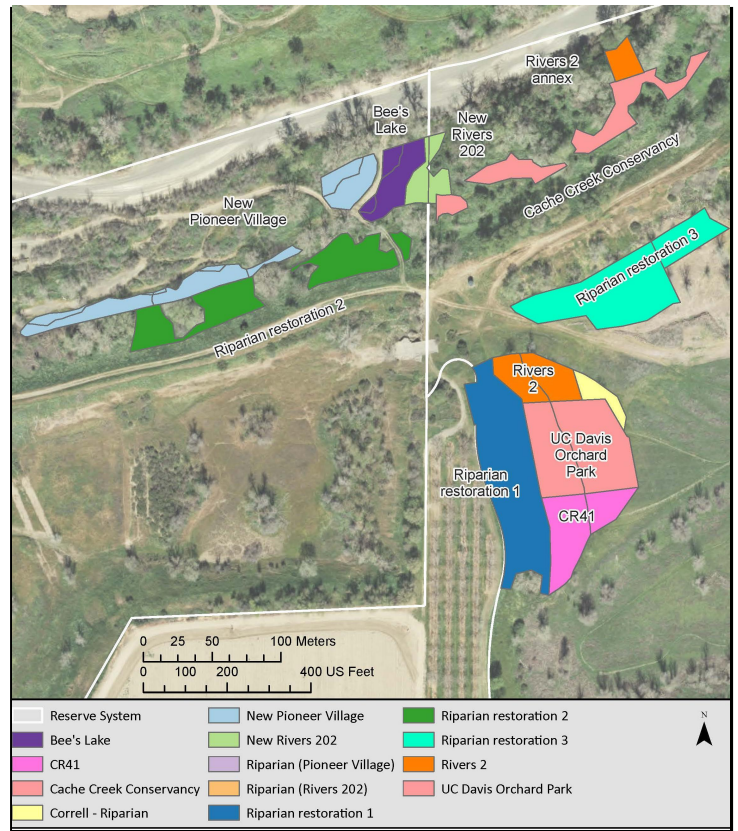


Figure 1: Example of multiple mitigation areas within a site

Table 1: Valley foothill riparian mitigation responsibilities

Task	Responsible Party for Each Task		
	Original HCP/NCCP	Sept. 20, 2021	Proposed
Identify riparian restoration site	YHC	YHC	YHC
Evaluate elderberry shrubs affected by covered activity, determine # of transplants and native plantings needed	Project proponent	Project proponent	Project proponent
Prepare restoration plan	YHC	YHC	YHC
Prepare restoration site	YHC	Project proponent	YHC
Transplant elderberry shrub(s)	Project proponent	Project proponent	Project proponent
Plant associated riparian species	YHC	Project proponent	YHC
Verify that planting is consistent with plan	YHC	YHC	YHC
Monitor and maintain site	YHC	YHC	YHC

ATTACHMENT:

Attachment A. Revised Valley Foothill Riparian Fee Memo

Attachment B. Valley Foothill Riparian Fee Revision Resolution