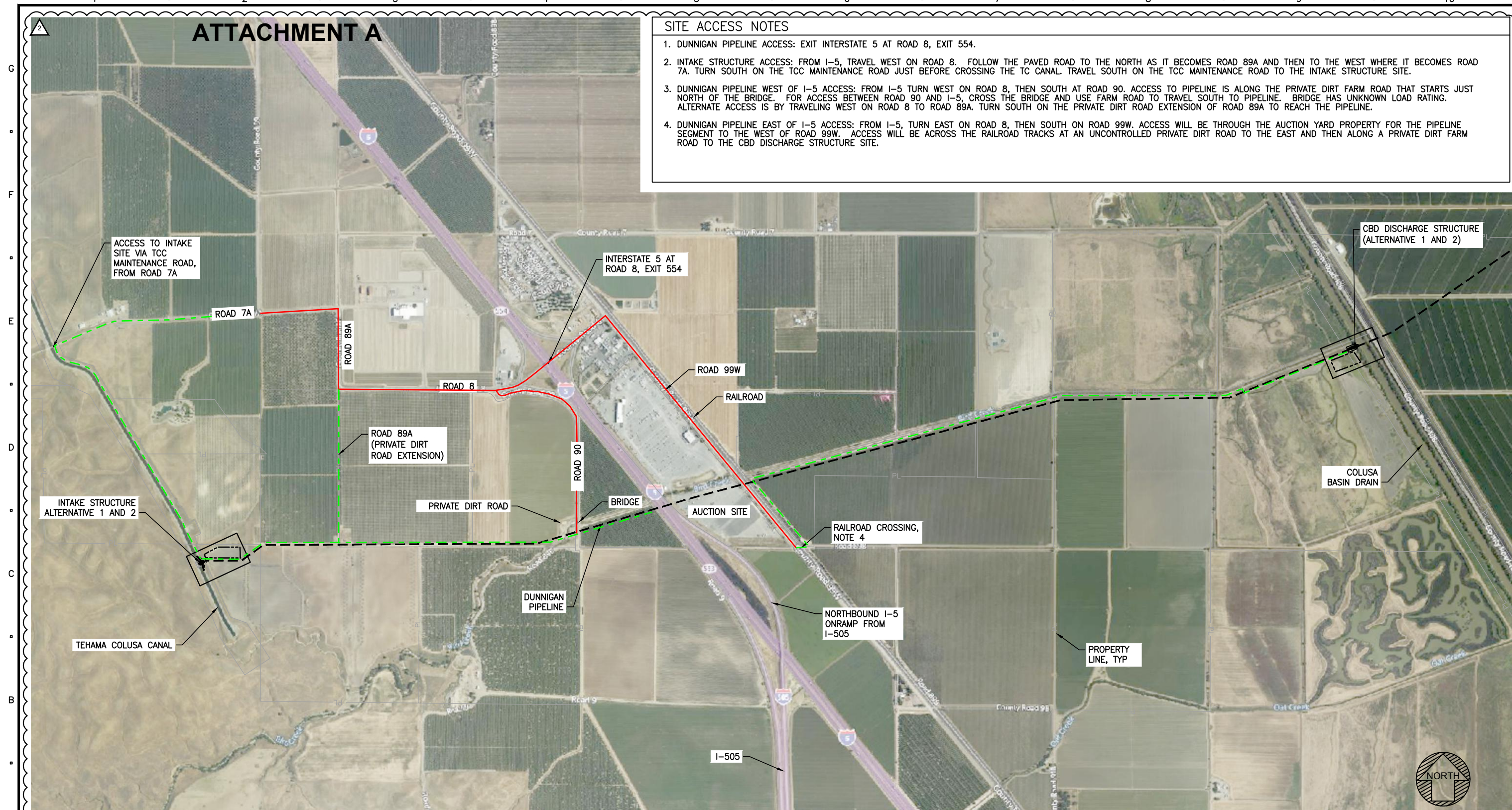


ATTACHMENT A

SITE ACCESS NOTES

1. DUNNIGAN PIPELINE ACCESS: EXIT INTERSTATE 5 AT ROAD 8, EXIT 554.
2. INTAKE STRUCTURE ACCESS: FROM I-5, TRAVEL WEST ON ROAD 8. FOLLOW THE PAVED ROAD TO THE NORTH AS IT BECOMES ROAD 89A AND THEN TO THE WEST WHERE IT BECOMES ROAD 7A. TURN SOUTH ON THE TCC MAINTENANCE ROAD JUST BEFORE CROSSING THE TC CANAL. TRAVEL SOUTH ON THE TCC MAINTENANCE ROAD TO THE INTAKE STRUCTURE SITE.
3. DUNNIGAN PIPELINE WEST OF I-5 ACCESS: FROM I-5 TURN WEST ON ROAD 8, THEN SOUTH AT ROAD 90. ACCESS TO PIPELINE IS ALONG THE PRIVATE DIRT FARM ROAD THAT STARTS JUST NORTH OF THE BRIDGE. FOR ACCESS BETWEEN ROAD 90 AND I-5, CROSS THE BRIDGE AND USE FARM ROAD TO TRAVEL SOUTH TO PIPELINE. BRIDGE HAS UNKNOWN LOAD RATING. ALTERNATE ACCESS IS BY TRAVELING WEST ON ROAD 8 TO ROAD 89A. TURN SOUTH ON THE PRIVATE DIRT ROAD EXTENSION OF ROAD 89A TO REACH THE PIPELINE.
4. DUNNIGAN PIPELINE EAST OF I-5 ACCESS: FROM I-5, TURN EAST ON ROAD 8, THEN SOUTH ON ROAD 99W. ACCESS WILL BE THROUGH THE AUCTION YARD PROPERTY FOR THE PIPELINE SEGMENT TO THE WEST OF ROAD 99W. ACCESS WILL BE ACROSS THE RAILROAD TRACKS AT AN UNCONTROLLED PRIVATE DIRT ROAD TO THE EAST AND THEN ALONG A PRIVATE DIRT FARM ROAD TO THE CBD DISCHARGE STRUCTURE SITE.



LEGEND:
 COUNTY ROAD ———
 PRIVATE ROAD - - - -

DUNNIGAN PIPELINE ACCESS PLAN
 SCALE: 1" = 800'

PLOTTED BY: CHELONIS, BECKY - February 27, 2024 - 3:44:42 PM
 DRAWING: GEN-030-C-2104_03380600.dwg
 JACOBS PROJECT # 03880600

I/R	DATE	BY	CHK	APPR	DESCRIPTION
2	03/12/2021	BC	JS	PR	REVISED AS NOTED

DESIGNED BY: B CHELONIS
 DRAWN BY: B CHELONIS
 CHECKED BY: J SMITH
 IN CHARGE: P RUDE
 DATE: 03/12/2021

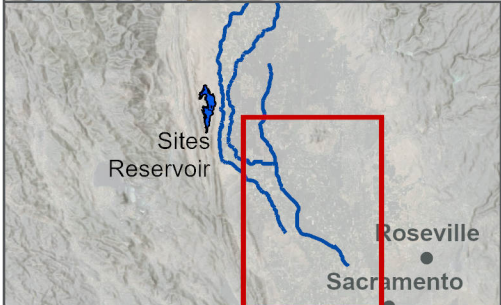
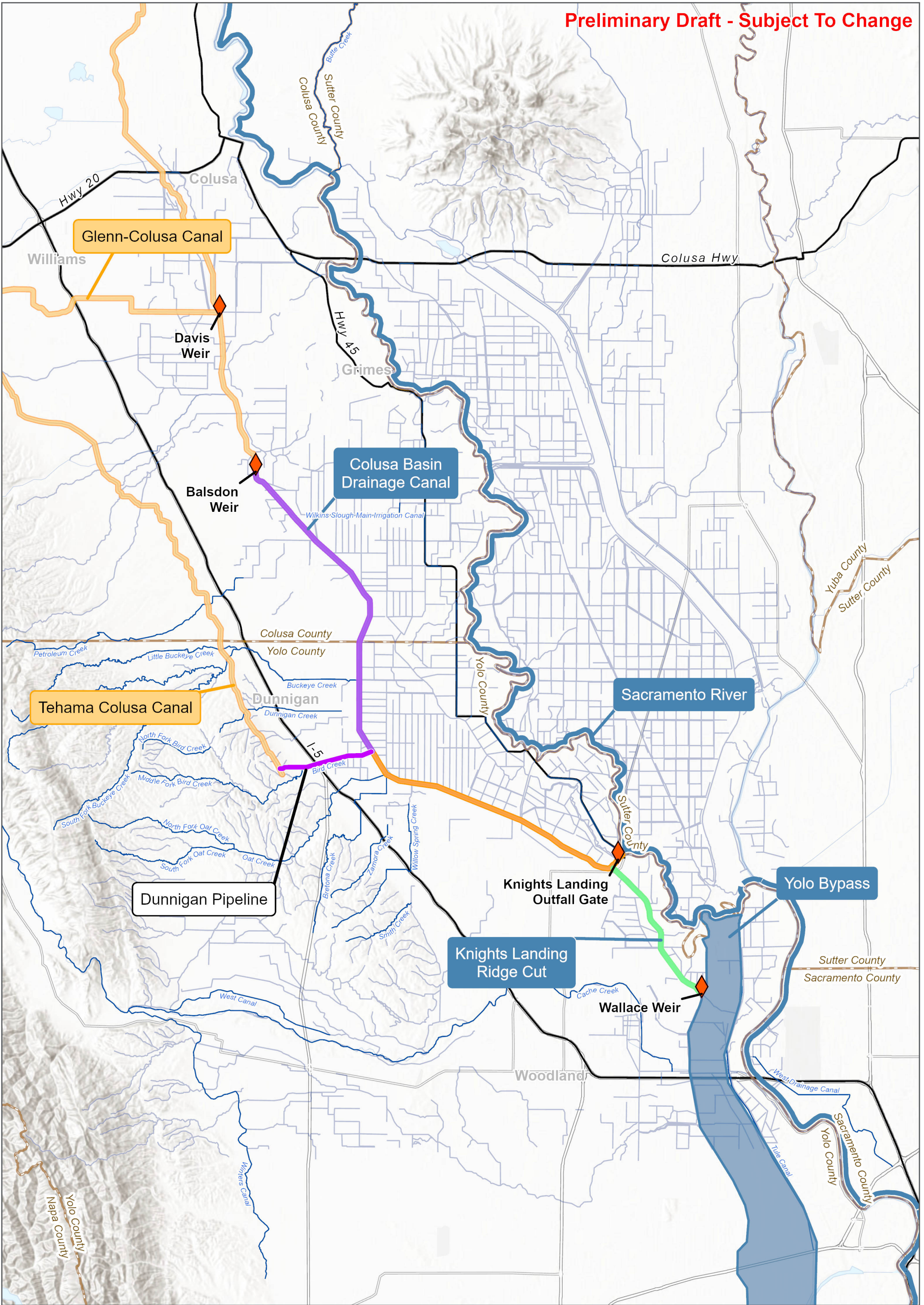
JACOBS
 2525 AIRPARK DR
 REDDING CA, 96001
 PHONE: (530) 243-5831



SITES RESERVOIR TO 2 DUNNIGAN PIPELINE ALTS 1 AND 2 ACCESS PLAN

VERIFY SCALES
 BAR IS ONE INCH ON ORIGINAL
 DRAWING. ADJUST SCALE FOR
 REDUCED PLOTS
 DRAWING NO.
 GEN-030-C-2104

PROJECT FEASIBILITY STUDY - NOT FOR CONSTRUCTION



LEGEND

	Existing Control Structures and Potential Measurement Location		Reach Areas
	Dunnigan Pipeline		Upper
			Middle
			Lower

N
0 4 8 12
MILES

LOWER COLUSA BASIN DRAIN SYSTEM
CREEKS, STREAMS AND KNOWN DITCHES

Map Date: 8/15/2023